

# Converting Colors

YUV(173.8910, 2.0257, 3.6036)

Have a look what the booklet for  
YUV(173.8910, 2.0257, 3.6036)  
contains.

<b>YUV(173.8910, 2.0257, 3.6036)</b> .....	3
<b><i>Conversions</i></b> .....	4
<b><i>Details</i></b> .....	6
<b><i>Harmonies</i></b> .....	12
<b><i>Previews</i></b> .....	24
<b><i>Color Blindness Simulation</i></b> .....	28
<b><i>CSS Examples</i></b> .....	31

# Color

**YUV(173.8910, 2.0257,  
3.6036)**

# Conversions

## Conversions Part 1

Format	Color
Hex	B2ABB2
RGB	178, 171, 178
RGB Percent	70%, 67%, 70%
CMY	0.3020, 0.3294, 0.3020
CMYK	0.00, 0.04, 0.00, 0.30
HSL	300°, 4%, 68%
HSV	300°, 4%, 70%
XYZ	40.9589, 41.8051, 48.0299
YIQ	173.8910, 1.9250, 3.6610

# Conversions

## Conversions Part 2

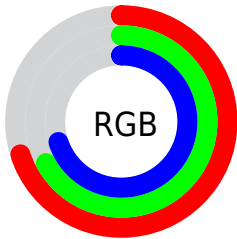
<b>Format</b>	<b>Color</b>
<b>RYB</b>	178, 171, 178
Decimal	11709362
CIELab	70.74, 3.80, -2.70
CIELCh	71, 4.663, 324.604
Yxy	41.8051, 0.3132, 0.3196
Android (android.graphics.Color)	4289899442 (0xFFB2ABB2)
YUV	173.8910, 2.0257, 3.6036
Hunter-Lab	64.6569, -0.0733, 1.2167

# Details

The YUV color **173.8910, 2.0257, 3.6036** is a light color, and the websafe version is hex **999999**. A complement of this color would be **175.1090, -2.0257, -3.6036**, and the grayscale version is **174.0000, 0.0000, 0.0000**.

A 20% lighter version of the original color is **229.3040, 2.3151, 4.1184**, and **121.4780, 1.7363, 3.0888** is the 20% darker color. If you saturate the color by 10%, you get **163.3250, 7.2348, 12.8700**, and if you desaturate by 10%, it is **184.4570, -3.1833, -5.6628**.

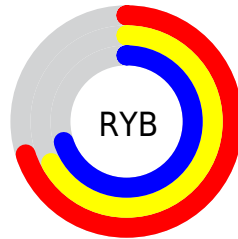
# Distribution



Red (70%)

Green (67%)

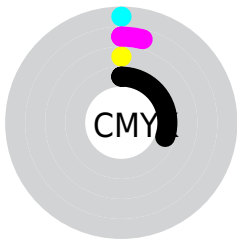
Blue (70%)



Red (70%)

Yellow (67%)

Blue (70%)

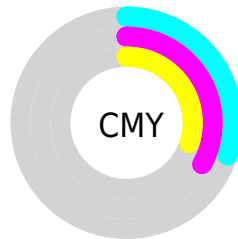


Cyan (0%)

Magenta (4%)

Yellow (0%)

Black (30%)



Cyan (30%)

Magenta (33%)

Yellow (30%)

# Brightness & Saturation Gradients

These gradients show how the YUV color 173.8910, 2.0257, 3.6036 changes by changing the brightness by 10 percent. The first figure shows a shift by +10% for each color and the second figure -10%.

Similar to the brightness gradients but the following saturation gradients show a change of the YUV color 173.8910, 2.0257, 3.6036 by changing the saturation by 10% instead.



■ 173.8910, 2.0257,  
3.6036

■ 173.8910, 2.0257,  
3.6036

255.0000, 0.0000,  
0.0000

■ 147.4780, 1.7363,  
3.0888

■ 229.3040, 2.3151,  
4.1184

■ 121.4780, 1.7363,  
3.0888

■ 96.4780, 1.7363,  
3.0888

■ 73.4780, 1.7363,  
3.0888

■ 50.4780, 1.7363,  
3.0888

■ 29.4780, 1.7363,  
3.0888

■ 3.7170, 2.6045,

4.6332

0.0000, 0.0000,  
0.0000

173.8910, 2.0257,  
3.6036

173.8910, 2.0257,  
3.6036

163.3250, 7.2348,  
12.8700

184.4570, -3.1833,  
-5.6628

152.7590, 12.4438,  
22.1364

195.0230, -8.3923,  
-14.9292

142.7800, 17.3635,  
30.8879

205.0020,  
-13.3120, -23.6808

132.2140, 22.5725,  
40.1543

215.5680,  
-18.5210, -32.9471

121.6480, 27.7815,  
49.4207

223.1990,  
-22.2831, -39.6395

■ 111.0820, 32.9906,  
58.6871

■ 100.5160, 38.1996,  
67.9535

■ 90.5370, 43.1193,  
76.7051

■ 79.9710, 48.3283,  
85.9714

# Harmonies

## Analogous

The Analogous color harmony consists of three colors that are next to each other on the color wheel.



173.3250, 3.7838, -0.2850



173.8910, 2.0257, 3.6036



173.7450, 0.1257, 6.3626

# Triad

The Triadic color harmony groups three colors that are evenly spaced from another and form a triangle on the color wheel.



173.8910, 2.0257, 3.6036



172.9960, -3.9420, 4.3885



172.1130, 1.9163, -7.9921

# Complementary

The Complementary color scheme is a pair of colors which are on the opposite of each other on the color wheel.



173.8910, 2.0257, 3.6036



175.1090, -2.0257, -3.6036

# Split Complementary

Split-complementary colors differ from the complementary color scheme. The scheme consists of three colors, the original color and two neighbors of the complement color.



171.9560, 0.0217, -6.9774



173.8910, 2.0257, 3.6036



172.6750, -3.7838, 0.2850

# Square

The Square scheme is like the rectangle color scheme, but the four colors are evenly spaced on the color wheel.



173.8910, 2.0257, 3.6036



173.4200, -3.6581, 6.6477



172.1090, -2.0257, -3.6036



172.2810, 3.8055, -7.2624



# Rectangle

The Rectangle color scheme consists of four colors that form a rectangle on the color wheel.



173.8910, 2.0257, 3.6036



173.7020, -1.3321, 7.2773



172.1090, -2.0257, -3.6036



171.9990, 1.4795, -7.8921

# Sweetspot

The Sweet Spot groups the original color and five complimentary colors.



173.8910, 2.0257, 3.6036



230.8260, 0.5788, 1.0296



171.7980, 3.0576, -0.6998



116.4130, 0.2894, 0.5148



245.0000, 0.0000, 0.0000



117.0000, 0.0000, 0.0000



# Same Dimension

The Same Dimension uses a secret algorithm to generate beautiful new colors.



173.8910, 2.0257, 3.6036



224.9560, 3.4727, 6.1776



173.5490, 0.7153, 3.9035



86.0650, 1.4470, 2.5740



63.1890, 44.2768, 78.7642



10.7380, 7.5242, 13.3848



# Inverse Universe

The Inverse Universe completely reimagines the original color for something new.



173.8910, 2.0257, 3.6036



224.9560, 3.4727, 6.1776



175.5650, -0.2785, -4.0035



86.0650, 1.4470, 2.5740



63.1890, 44.2768, 78.7642



10.7380, 7.5242, 13.3848



# Previews

## White Background



This preview shows how the YUV color 173.8910, 2.0257, 3.6036 looks on a white background.

## Color Contrast Check

Large Text (above 18pt) WCAG AA × Fail

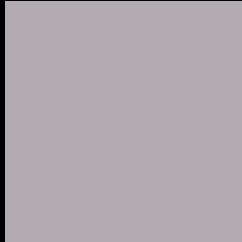
Any Text WCAG AA × Fail

Large Text (above 18pt) WCAG AAA × Fail

Any Text WCAG AAA × Fail



# Black Background



This preview shows how the YUV color 173.8910, 2.0257, 3.6036 looks on a black background.

## Color Contrast Check

Large Text (above 18pt) WCAG AA ✓ Pass

Any Text WCAG AA ✓ Pass

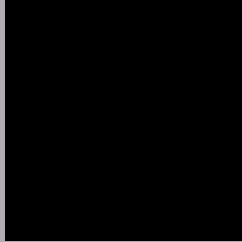
Large Text (above 18pt) WCAG AAA ✓ Pass

Any Text WCAG AAA ✓ Pass

If you want to check with other color combinations, try the [Color Contrast Checker](#).

# YUV 173.8910, 2.0257, 3.6036

## Background



This preview shows how black text looks on a background with the YUV color 173.8910, 2.0257, 3.6036.



This preview shows how white text looks on a background with the YUV color 173.8910, 2.0257,



# Color Blindness Simulation

Color vision deficiency is a very complex topic, and I could not describe the different causes any better than Wikipedia does, so if you want to learn more, you should check out their [article about color blindness](#).

## Dichromacy



### Original Color

173.8910, 2.0257, 3.6036

### Protanopia

173.3960, 2.7628, 0.5297

### Deuteranopia

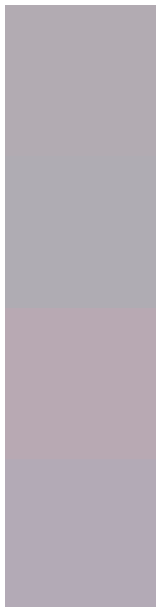
174.9350, 2.0040, 10.5810



## Tritanopia

174.2870, 4.7885, 4.1333

# Trichromacy



## Original Color

173.8910, 2.0257, 3.6036

## Protanomaly

173.6950, 2.6154, 1.1445

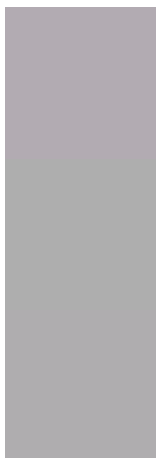
## Deuteranomaly

174.6250, 2.1569, 8.2219

## Tritanomaly

174.0590, 3.9149, 4.3333

# Monochromacy



## Original Color

173.8910, 2.0257, 3.6036

## Achromatopsia

174.0000, 0.0000, 0.0000

## Achromatomaly

173.8260, 0.5788, 1.0296

# CSS Examples

## Text

The CSS property to change the color of the text to YUV 173.8910, 2.0257, 3.6036 is called "color". The color property can be set on classes, ids or directly on the HTML element.

This example shows how text in the color `rgb(178, 171, 178)` looks like.

```
.text, #text, p{  
    color:rgb(178, 171, 178)  
}
```

If you want to add a text shadow in that color use the text-shadow property, you can generate a text shadow directly with our [CSS Text Shadow Generator](#).

Here you see how black text with a 4 pixel rgb(178, 171, 178) colored shadow looks like.

```
.shadow{ text-shadow: 4px 4px 2px rgb(178, 171, 178) }
```

## Border

The CSS property to change the border of an element to YUV 173.8910, 2.0257, 3.6036 is called "border". The border property can be set on classes, ids or directly on the HTML element.

This example shows the color as border, it can be applied via the CSS property "border" or "border-color".

```
.border, #border, table{ border:4px solid rgb(178, 171, 178) }
```



If only the border color should be changed use the property `border-color`.

```
.border{ border-color:rgb(178, 171, 178) }
```

If you want to add a box shadow in that color use:

Here you see how a box with a 4 pixel `rgb(178, 171, 178)` colored shadow looks like.

```
.boxshadow{ -moz-box-shadow:4px 4px 4px  
4px rgb(178, 171, 178); -webkit-box-  
shadow:4px 4px 4px 4px rgb(178, 171, 178);  
box-shadow:4px 4px 4px 4px rgb(178, 171,  
178) }
```

# Background

The CSS property to change the background color of an element to YUV 173.8910, 2.0257, 3.6036 is called "background". The background property can be set on classes, ids or directly on the HTML element.

```
.background, #background, body{  
background: rgb(178, 171, 178) }
```

If only the background color should be changed can be used:

```
.background{ background-color: rgb(178,  
171, 178) }
```

This example shows the color as background, it is applied via the CSS property "background".

To optimize and compress your CSS code, you can use our [online CSS compressor and optimizer](#) based on csstidy. If you want to create a linear or radial gradient as background or border, check our [CSS Gradient Generator](#).

Hey! You found this booklet interesting? Support Converting Colors with the new Membership Option!

The pro membership hides all ads, plus gives you double the colors in the color bucket, and more awesome pro features!

**[Learn more, Memberships starting at \\$2.50/m!](#)**

**Follow me  
on Twitter!**

@ConvertingColor