

Converting Colors

YUV(173.9170, -7.3541,
25.5058)

Have a look what the booklet for
YUV(173.9170, -7.3541, 25.5058)
contains.

YUV(173.9170, -7.3541, 25.5058)	3
<i>Conversions</i>	4
<i>Details</i>	6
<i>Harmonies</i>	12
<i>Previews</i>	24
<i>Color Blindness Simulation</i>	28
<i>CSS Examples</i>	31

Color

**YUV(173.9170, -7.3541,
25.5058)**

Conversions

Conversions Part 1

Format	Color
Hex	CBA29F
RGB	203, 162, 159
RGB Percent	80%, 64%, 62%
CMY	0.2039, 0.3647, 0.3765
CMYK	0.00, 0.20, 0.22, 0.20
HSL	4°, 30%, 71%
HSV	4°, 22%, 80%
XYZ	43.8069, 41.0404, 38.4136
YIQ	173.9170, 25.3990, 7.7590

Conversions

Conversions Part 2

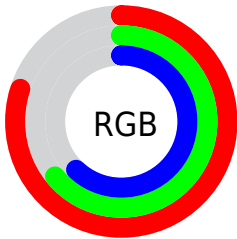
Format	Color
R_{YB}	203, 162, 159
Decimal	13345439
CIE _{Lab}	70.20, 14.65, 7.31
CIE _{LCh}	70, 16.374, 26.505
Yxy	41.0404, 0.3554, 0.3330
Android (android.graphics.Color)	4291535519 (0xFFCBA29F)
YUV	173.9170, -7.3541, 25.5058
Hunter-Lab	64.0628, 9.9508, 9.2922

Details

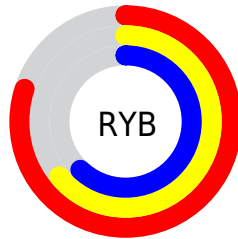
The YUV color $173.9170, -7.3541, 25.5058$ is a light color, and the websafe version is hex $CC9999$. A complement of this color would be $188.0830, 7.3541, -25.5058$, and the grayscale version is $174.0000, 0.0000, 0.0000$.

A 20% lighter version of the original color is $228.0200, -6.9119, 23.6615$, and $121.1340, -6.4751, 23.5615$ is the 20% darker color. If you saturate the color by 10%, you get $160.4840, -10.5916, 37.2865$, and if you desaturate by 10%, it is $187.3500, -4.1165, 13.7251$.

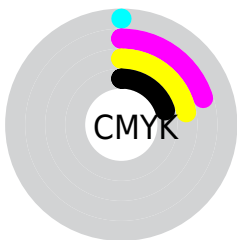
Distribution



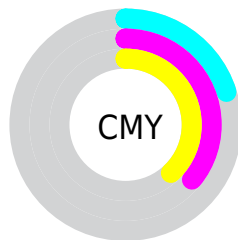
- Red (80%)
- Green (64%)
- Blue (62%)



- Red (80%)
- Yellow (64%)
- Blue (62%)



- Cyan (0%)
- Magenta (20%)
- Yellow (22%)
- Black (20%)





- Cyan (20%)
- Magenta (36%)
- Yellow (38%)

Brightness & Saturation Gradients


These gradients show how the YUV color 173.9170, -7.3541, 25.5058 changes by changing the brightness by 10 percent. The first figure shows a shift by +10% for each color and the second figure -10%.


Similar to the brightness gradients but the following saturation gradients show a change of the YUV color 173.9170, -7.3541, 25.5058 by changing the saturation by 10% instead.


 173.9170, -7.3541,
25.5058


 173.9170, -7.3541,
25.5058


255.0000, 0.0000,
0.0000


 147.3190, -7.0593,
24.2762


 228.0200, -6.9119,
23.6615


 121.1340, -6.4751,
23.5615

 247.6480, -2.7845,
6.4477

 96.4220, -6.6170,
22.4319

 71.9380, -5.8854,
21.1024

 49.4540, -5.1538,
19.7728

 27.5570, -4.7116,
17.9285

 8.4860, -3.6906,

17.1138

■ 0.0000, 0.0000,
0.0000

■ 173.9170, -7.3541,
25.5058

■ 173.9170, -7.3541,
25.5058

■ 160.4840,
-10.5916, 37.2865

■ 187.3500, -4.1165,
13.7251

■ 146.9370,
-14.2659, 49.1673

■ 200.8970, -0.4422,
1.8443

■ 133.5040,
-17.5035, 60.9480

■ 214.3300, 2.7953,
-9.9364

■ 120.0710,
-20.7410, 72.7287

■ 227.7630, 6.0328,
-21.7172

■ 106.6380,
-23.9785, 84.5095

■ 239.4520, 7.6652,
-31.9684

■ 93.6780, -27.9423,
95.8754

■ 80.2450, -31.1798,
107.6561

■ 68.9150, -33.9751,
117.5925

Harmonies

Analogous

The Analogous color harmony consists of three colors that are next to each other on the color wheel.



174.1430, -0.0705, 22.6766



173.9170, -7.3541, 25.5058



172.5160, -12.5794, 21.4725

Triad

The Triadic color harmony groups three colors that are evenly spaced from another and form a triangle on the color wheel.



173.9170, -7.3541, 25.5058



167.6040, -6.2138, -13.6847



170.2120, 15.1785, -15.0949

Complementary

The Complementary color scheme is a pair of colors which are on the opposite of each other on the color wheel.



173.9170, -7.3541, 25.5058



188.0830, 7.3541, -25.5058

Split Complementary

Split-complementary colors differ from the complementary color scheme. The scheme consists of three colors, the original color and two neighbors of the complement color.



168.0920, 13.7586, -26.3907



173.9170, -7.3541, 25.5058



166.1880, 1.3863, -24.7209

Square

The Square scheme is like the rectangle color scheme, but the four colors are evenly spaced on the color wheel.



173.9170, -7.3541, 25.5058



169.7860, -12.2195, -0.6893



166.1040, 8.8227, -29.9092



172.6160, 12.5143, -0.5402

Rectangle

The Rectangle color scheme consists of four colors that form a rectangle on the color wheel.



173.9170, -7.3541, 25.5058



171.7280, -14.1629, 16.0245



166.1040, 8.8227, -29.9092



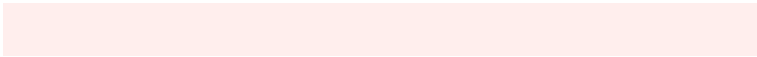
169.4780, 15.0473, -19.7132

Sweetspot

The Sweet Spot groups the original color and five complimentary colors.



173.9170, -7.3541, 25.5058



242.9690, -2.9427, 10.5512



176.8300, 11.4228, 22.9511



120.8760, -1.9109, 6.2477



0.0000, 0.0000, 0.0000



128.0000, 0.0000, 0.0000

Same Dimension

The Same Dimension uses a secret algorithm to generate beautiful new colors.



173.9170, -7.3541, 25.5058



211.0820, -10.8864, 38.5161



186.8310, -13.7207, 14.1802



94.9900, -1.4741, 6.1478



56.0910, -27.6529, 96.3902



13.1230, -6.4696, 21.8171

Inverse Universe

The Inverse Universe completely reimagines the original color for something new.



188.0830, 7.3541, -25.5058



232.3310, 11.1758, -38.0013



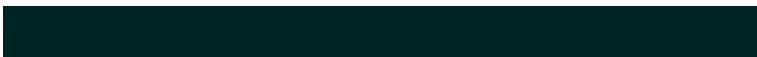
175.1690, 13.7207, -14.1802



98.4230, 1.7635, -5.6330



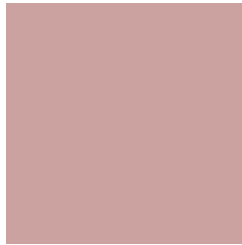
109.3220, 27.9423, -95.8754



25.4640, 6.1802, -22.3319

Previews

White Background



This preview shows how the YUV color 173.9170, -7.3541, 25.5058 looks on a white background.

Color Contrast Check

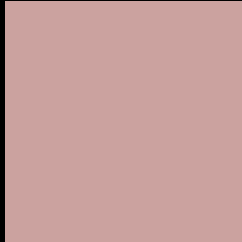
Large Text (above 18pt) WCAG AA × Fail

Any Text WCAG AA × Fail

Large Text (above 18pt) WCAG AAA × Fail

Any Text WCAG AAA × Fail

Black Background



This preview shows how the YUV color 173.9170, -7.3541, 25.5058 looks on a black background.

Color Contrast Check

Large Text (above 18pt) WCAG AA ✓ Pass

Any Text WCAG AA ✓ Pass

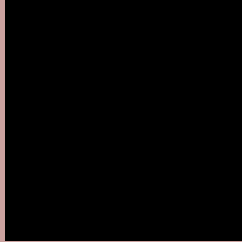
Large Text (above 18pt) WCAG AAA ✓ Pass

Any Text WCAG AAA ✓ Pass

If you want to check with other color combinations, try the [Color Contrast Checker](#).

YUV 173.9170, -7.3541, 25.5058

Background



This preview shows how black text looks on a background with the YUV color 173.9170, -7.3541, 25.5058.



This preview shows how white text looks on a background with the YUV color 173.9170, -7.3541,

25.5058.

Color Blindness Simulation

Color vision deficiency is a very complex topic, and I could not describe the different causes any better than Wikipedia does, so if you want to learn more, you should check out their [article about color blindness](#).

Dichromacy



Original Color

173.9170, -7.3541, 25.5058

Protanopia

171.9960, -3.9420, 4.3885

Deuteranopia

173.1610, -7.4744, 17.3988



Tritanopia

174.8230, -1.3917, 26.4652

Trichromacy



Original Color

173.9170, -7.3541, 25.5058

Protanomaly

172.6980, -5.2741, 11.6659

Deuteranomaly

173.7700, -7.7746, 20.3727

Tritanomaly

174.5410, -3.7177, 25.8355

Monochromacy



Original Color

173.9170, -7.3541, 25.5058

Achromatopsia

174.0000, 0.0000, 0.0000

Achromatomaly

174.3710, -2.6479, 9.3216

CSS Examples

Text

The CSS property to change the color of the text to YUV 173.9170, -7.3541, 25.5058 is called "color". The color property can be set on classes, ids or directly on the HTML element.

This example shows how text in the color `rgb(203, 162, 159)` looks like.

```
.text, #text, p{  
    color:rgb(203, 162, 159)  
}
```

If you want to add a text shadow in that color use the text-shadow property, you can generate a text shadow directly with our [CSS Text Shadow Generator](#).

Here you see how black text with a 4 pixel rgb(203, 162, 159) colored shadow looks like.

```
.shadow{ text-shadow: 4px 4px 2px rgb(203, 162, 159) }
```

Border

The CSS property to change the border of an element to YUV 173.9170, -7.3541, 25.5058 is called "border". The border property can be set on classes, ids or directly on the HTML element.

This example shows the color as border, it can be applied via the CSS property "border" or "border-color".

```
.border, #border, table{ border:4px solid rgb(203, 162, 159) }
```


If only the border color should be changed use the property `border-color`.

```
.border{ border-color:rgb(203, 162, 159) }
```

If you want to add a box shadow in that color use:

Here you see how a box with a 4 pixel `rgb(203, 162, 159)` colored shadow looks like.

```
.boxshadow{ -moz-box-shadow:4px 4px 4px  
4px rgb(203, 162, 159); -webkit-box-  
shadow:4px 4px 4px 4px rgb(203, 162, 159);  
box-shadow:4px 4px 4px 4px rgb(203, 162,  
159) }
```

Background

The CSS property to change the background color of an element to YUV 173.9170, -7.3541, 25.5058 is called "background". The background property can be set on classes, ids or directly on the HTML element.

```
.background, #background, body{  
background: rgb(203, 162, 159) }
```

If only the background color should be changed can be used:

```
.background{ background-color: rgb(203,  
162, 159) }
```

This example shows the color as background, it is applied via the CSS property "background".

To optimize and compress your CSS code, you can use our [online CSS compressor and optimizer](#) based on csstidy. If you want to create a linear or radial gradient as background or border, check our [CSS Gradient Generator](#).

Hey! You found this booklet interesting? Support Converting Colors with the new Membership Option!

The pro membership hides all ads, plus gives you double the colors in the color bucket, and more awesome pro features!

[Learn more, Memberships starting at \\$2.50/m!](#)

**Follow me
on Twitter!**

@ConvertingColor