

Converting Colors

YUV(174.0160, -14.3049,
14.8950)

Have a look what the booklet for
YUV(174.0160, -14.3049, 14.8950)
contains.

YUV(174.0160, -14.3049, 14.8950)	3
<i>Conversions</i>	4
<i>Details</i>	6
<i>Harmonies</i>	12
<i>Previews</i>	24
<i>Color Blindness Simulation</i>	28
<i>CSS Examples</i>	31

Color

**YUV(174.0160, -14.3049,
14.8950)**

Conversions

Conversions Part 1

Format	Color
Hex	BFAB91
RGB	191, 171, 145
RGB Percent	75%, 67%, 57%
CMY	0.2510, 0.3294, 0.4314
CMYK	0.00, 0.10, 0.24, 0.25
HSL	34°, 26%, 66%
HSV	34°, 24%, 75%
XYZ	41.1596, 42.2465, 32.7731
YIQ	174.0160, 20.2660, -3.8460

Conversions

Conversions Part 2

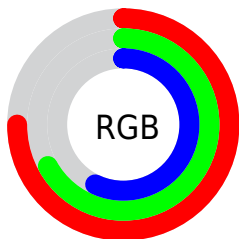
Format	Color
R _Y B	180, 191, 145
Decimal	12561297
CIE Lab	71.04, 3.11, 16.04
CIE LCh	71, 16.334, 79.038
Yxy	42.2465, 0.3543, 0.3636
Android (android.graphics.Color)	4290751377 (0xFFBFAB91)
YUV	174.0160, -14.3049, 14.8950
Hunter-Lab	64.9973, -0.7101, 15.6028

Details

The YUV color $174.0160, -14.3049, 14.8950$ is a light color, and the websafe version is hex $CCCC99$. A complement of this color would be $161.9840, 14.3049, -14.8950$, and the grayscale version is $174.0000, 0.0000, 0.0000$.

A 20% lighter version of the original color is $229.5000, -15.0365, 16.2245$, and $121.5320, -13.5733, 13.5654$ is the 20% darker color. If you saturate the color by 10%, you get $167.1540, -20.2889, 20.9129$, and if you desaturate by 10%, it is $180.8780, -8.3209, 8.8770$.

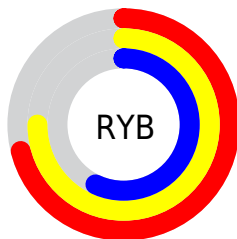
Distribution



Red (75%)

Green (67%)

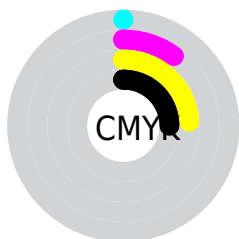
Blue (57%)



Red (71%)

Yellow (75%)

Blue (57%)

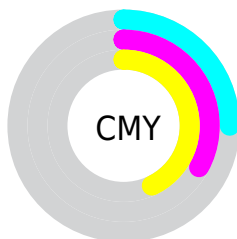


Cyan (0%)

Magenta (10%)

Yellow (24%)

Black (25%)



Cyan (25%)

Magenta (33%)

Yellow (43%)

Brightness & Saturation Gradients

These gradients show how the YUV color 174.0160, -14.3049, 14.8950 changes by changing the brightness by 10 percent. The first figure shows a shift by +10% for each color and the second figure -10%.

Similar to the brightness gradients but the following saturation gradients show a change of the YUV color 174.0160, -14.3049, 14.8950 by changing the saturation by 10% instead.

■ 174.0160,
-14.3049, 14.8950

■ 174.0160,
-14.3049, 14.8950

255.0000, 0.0000,
0.0000

■ 147.7170,
-14.1575, 14.2802

■ 229.5000,
-15.0365, 16.2245

■ 121.5320,
-13.5733, 13.5654

■ 251.8080,
-12.2303, 2.7994

■ 96.4610, -12.5523,
12.7507

■ 72.8630, -12.2575,
11.5211

■ 49.7920, -11.2365,
10.7064

■ 28.2220, -13.4204,
11.2063

■ 4.7730, -2.3531,

8.0921

■ 0.0000, 0.0000,
0.0000

■ 174.0160,
-14.3049, 14.8950

■ 174.0160,
-14.3049, 14.8950

■ 167.1540,
-20.2889, 20.9129

■ 180.8780, -8.3209,
8.8770

■ 159.7050,
-25.9836, 27.4457

■ 188.3270, -2.6262,
2.3442

■ 152.8430,
-31.9676, 33.4637

■ 195.1890, 3.3578,
-3.6738

■ 145.9810,
-37.9516, 39.4817

■ 202.0510, 9.3419,
-9.6917

■ 138.4180,
-44.0831, 46.1144

■ 209.6140, 15.4733,
-16.3245

■ 131.5560,
-50.0671, 52.1324

■ 215.9060, 19.2733,
-21.8426

■ 124.6940,
-56.0511, 58.1504

■ 220.6020, 16.9582,
-25.9610

■ 120.5050,
-59.4090, 61.8241

■ 225.2980, 14.6431,
-30.0793

■ 230.5810, 12.0386,
-34.7125

Harmonies

Analogous

The Analogous color harmony consists of three colors that are next to each other on the color wheel.



175.7550, -11.7112, 23.0169



174.0160, -14.3049, 14.8950



172.5800, -13.1039, 2.9993

Triad

The Triadic color harmony groups three colors that are evenly spaced from another and form a triangle on the color wheel.



174.0160, -14.3049, 14.8950



168.6480, 7.0755, -29.5093



176.2430, 8.2612, 10.3109

Complementary

The Complementary color scheme is a pair of colors which are on the opposite of each other on the color wheel.



174.0160, -14.3049, 14.8950



161.9840, 14.3049, -14.8950

Split Complementary

Split-complementary colors differ from the complementary color scheme. The scheme consists of three colors, the original color and two neighbors of the complement color.



174.8220, 13.3988, -4.2289



174.0160, -14.3049, 14.8950



169.8530, 12.8905, -27.9351

Square

The Square scheme is like the rectangle color scheme, but the four colors are evenly spaced on the color wheel.



174.0160, -14.3049, 14.8950



168.7430, -0.3663, -22.5766



172.1900, 15.1893, -18.5836



176.8870, 1.5347, 21.1471

Rectangle

The Rectangle color scheme consists of four colors that form a rectangle on the color wheel.



174.0160, -14.3049, 14.8950



171.3230, -10.0192, -6.4223



172.1900, 15.1893, -18.5836



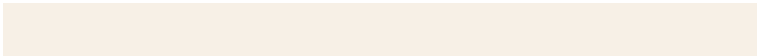
176.0790, 10.3141, 5.1927

Sweetspot

The Sweet Spot groups the original color and five complimentary colors.



174.0160, -14.3049, 14.8950



240.9530, -5.3998, 5.3032



161.1480, 2.3920, 26.1802



121.5120, -3.2104, 3.0590



252.0000, 0.0000, 0.0000



125.0000, 0.0000, 0.0000

Same Dimension

The Same Dimension uses a secret algorithm to generate beautiful new colors.



174.0160, -14.3049, 14.8950



220.7090, -22.0415, 23.0572



185.1580, -19.7979, 3.3694



90.6260, -2.7736, 2.9590



99.4850, -49.0461, 51.3177



19.2480, -9.4893, 10.3065

Inverse Universe

The Inverse Universe completely reimagines the original color for something new.



161.9840, 14.3049, -14.8950



202.2910, 22.0415, -23.0572



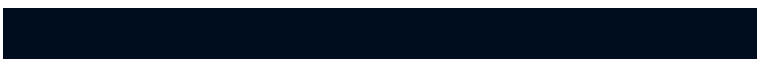
150.8420, 19.7979, -3.3694



88.3740, 2.7736, -2.9590



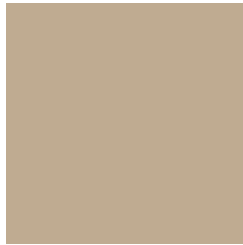
58.5150, 49.0461, -51.3177



11.1650, 9.7787, -9.7917

Previews

White Background



This preview shows how the YUV color 174.0160, -14.3049, 14.8950 looks on a white background.

Color Contrast Check

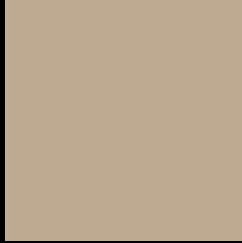
Large Text (above 18pt) WCAG AA × Fail

Any Text WCAG AA × Fail

Large Text (above 18pt) WCAG AAA × Fail

Any Text WCAG AAA × Fail

Black Background



This preview shows how the YUV color 174.0160, -14.3049, 14.8950 looks on a black background.

Color Contrast Check

Large Text (above 18pt) WCAG AA ✓ Pass

Any Text WCAG AA ✓ Pass

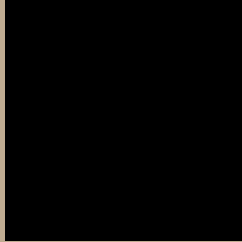
Large Text (above 18pt) WCAG AAA ✓ Pass

Any Text WCAG AAA ✓ Pass

If you want to check with other color combinations, try the [Color Contrast Checker](#).

YUV 174.0160, -14.3049, 14.8950

Background



This preview shows how black text looks on a background with the YUV color 174.0160, -14.3049, 14.8950.



This preview shows how white text looks on a background with the YUV color 174.0160, -14.3049, 14.8950.

Color Blindness Simulation

Color vision deficiency is a very complex topic, and I could not describe the different causes any better than Wikipedia does, so if you want to learn more, you should check out their [article about color blindness](#).

Dichromacy



Original Color

174.0160, -14.3049, 14.8950

Protanopia

173.4990, -13.5570, 8.3324

Deuteranopia

174.7720, -14.1846, 23.0020



Tritanopia

176.1530, 1.4036, 16.5288

Trichromacy



Original Color

174.0160, -14.3049, 14.8950

Protanomaly

173.8090, -13.7098, 10.6915

Deuteranomaly

174.1630, -13.8844, 20.0280

Tritanomaly

175.6600, -4.2694, 16.0842

Monochromacy



Original Color

174.0160, -14.3049, 14.8950

Achromatopsia

174.0000, 0.0000, 0.0000

Achromatomaly

173.9530, -5.3998, 5.3032

CSS Examples

Text

The CSS property to change the color of the text to YUV 174.0160, -14.3049, 14.8950 is called "color". The color property can be set on classes, ids or directly on the HTML element.

This example shows how text in the color `rgb(191, 171, 145)` looks like.

```
.text, #text, p{  
    color:rgb(191, 171, 145)  
}
```

If you want to add a text shadow in that color use the text-shadow property, you can generate a text shadow directly with our [CSS Text Shadow Generator](#).

Here you see how black text with a 4 pixel rgb(191, 171, 145) colored shadow looks like.

```
.shadow{ text-shadow: 4px 4px 2px rgb(191, 171, 145) }
```

Border

The CSS property to change the border of an element to YUV 174.0160, -14.3049, 14.8950 is called "border".

The border property can be set on classes, ids or directly on the HTML element.

This example shows the color as border, it can be applied via the CSS property "border" or "border-color".

```
.border, #border, table{ border:4px solid rgb(191, 171, 145) }
```


If only the border color should be changed use the property `border-color`.

```
.border{ border-color:rgb(191, 171, 145) }
```

If you want to add a box shadow in that color use:

Here you see how a box with a 4 pixel `rgb(191, 171, 145)` colored shadow looks like.

```
.boxshadow{ -moz-box-shadow:4px 4px 4px  
4px rgb(191, 171, 145); -webkit-box-  
shadow:4px 4px 4px 4px rgb(191, 171, 145);  
box-shadow:4px 4px 4px 4px rgb(191, 171,  
145) }
```

Background

The CSS property to change the background color of an element to YUV 174.0160, -14.3049, 14.8950 is called "background". The background property can be set on classes, ids or directly on the HTML element.

```
.background, #background, body{  
background: rgb(191, 171, 145) }
```

If only the background color should be changed can be used:

```
.background{ background-color: rgb(191,  
171, 145) }
```

This example shows the color as background, it is applied via the CSS property "background".

To optimize and compress your CSS code, you can use our [online CSS compressor and optimizer](#) based on csstidy. If you want to create a linear or radial gradient as background or border, check our [CSS Gradient Generator](#).

Hey! You found this booklet interesting? Support Converting Colors with the new Membership Option!

The pro membership hides all ads, plus gives you double the colors in the color bucket, and more awesome pro features!

[Learn more, Memberships starting at \\$2.50/m!](#)

**Follow me
on Twitter!**

@ConvertingColor