

Converting Colors

YUV(174.2290, -17.3679,
17.3392)

Have a look what the booklet for
YUV(174.2290, -17.3679, 17.3392)
contains.

YUV(174.2290, -17.3679, 17.3392)	3
<i>Conversions</i>	4
<i>Details</i>	6
<i>Harmonies</i>	12
<i>Previews</i>	24
<i>Color Blindness Simulation</i>	28
<i>CSS Examples</i>	31

Color

**YUV(174.2290, -17.3679,
17.3392)**

Conversions

Conversions Part 1

Format	Color
Hex	C2AB8B
RGB	194, 171, 139
RGB Percent	76%, 67%, 55%
CMY	0.2392, 0.3294, 0.4549
CMYK	0.00, 0.12, 0.28, 0.24
HSL	35°, 31%, 65%
HSV	35°, 28%, 76%
XYZ	41.4712, 42.4592, 30.4358
YIQ	174.2290, 23.9800, -5.0760

Conversions

Conversions Part 2

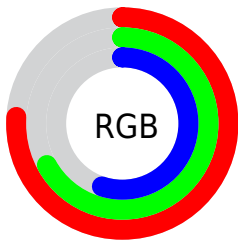
Format	Color
R_{YB}	179, 194, 139
Decimal	12757899
CIE _{Lab}	71.19, 3.43, 19.55
CIE _{LCh}	71, 19.851, 80.051
Yxy	42.4592, 0.3626, 0.3713
Android (android.graphics.Color)	4290947979 (0xFFC2AB8B)
YUV	174.2290, -17.3679, 17.3392
Hunter-Lab	65.1608, -0.4259, 17.9189

Details

The YUV color $174.2290, -17.3679, 17.3392$ is a light color, and the websafe version is hex $CCCC99$. A complement of this color would be $158.7710, 17.3679, -17.3392$, and the grayscale version is $174.0000, 0.0000, 0.0000$.

A 20% lighter version of the original color is $229.7130, -18.0995, 18.6687$, and $121.8590, -16.1995, 15.9097$ is the 20% darker color. If you saturate the color by 10%, you get $167.3670, -23.3519, 23.3571$, and if you desaturate by 10%, it is $181.0910, -11.3839, 11.3212$.

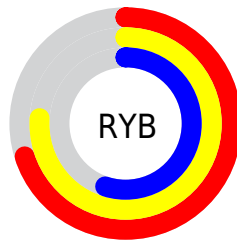
Distribution



Red (76%)

Green (67%)

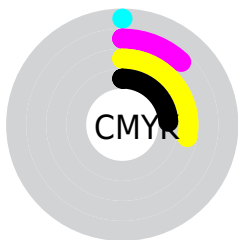
Blue (55%)



Red (70%)

Yellow (76%)

Blue (55%)

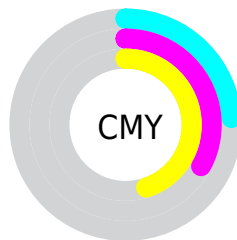


Cyan (0%)

Magenta (12%)

Yellow (28%)

Black (24%)



Cyan (24%)

Magenta (33%)

Yellow (45%)

Brightness & Saturation Gradients

These gradients show how the YUV color 174.2290, -17.3679, 17.3392 changes by changing the brightness by 10 percent. The first figure shows a shift by +10% for each color and the second figure -10%.

Similar to the brightness gradients but the following saturation gradients show a change of the YUV color 174.2290, -17.3679, 17.3392 by changing the saturation by 10% instead.

■ 174.2290,
-17.3679, 17.3392

■ 174.2290,
-17.3679, 17.3392

255.0000, 0.0000,
0.0000

■ 147.6310,
-17.0731, 16.1096

■ 229.7130,
-18.0995, 18.6687

■ 121.8590,
-16.1995, 15.9097

■ 251.1240,
-14.8511, 3.3993

■ 96.6740, -15.6153,
15.1949

■ 254.3160, -2.6208,
0.5999

■ 72.8910, -14.7363,
13.2506

■ 49.8200, -13.7153,
12.4359

■ 28.4070, -14.0047,
11.9211

■ 5.0720, -2.5005,

8.7069

0.0000, 0.0000,
0.0000

174.2290,
-17.3679, 17.3392

174.2290,
-17.3679, 17.3392

167.3670,
-23.3519, 23.3571

181.0910,
-11.3839, 11.3212

160.3910,
-29.7728, 29.4751

188.0670, -4.9630,
5.2032

153.5290,
-35.7568, 35.4931

194.9290, 1.0210,
-0.8147

146.5530,
-42.1776, 41.6110

201.9050, 7.4418,
-6.9327

139.1040,
-47.8723, 48.1438

209.3540, 13.1365,
-13.4655

■ 132.2420,
-53.8563, 54.1618

■ 216.2160, 19.1205,
-19.4834

■ 125.2660,
-60.2771, 60.2797

■ 220.9120, 16.8054,
-23.6018

■ 124.3370,
-61.2981, 61.0945

■ 225.6080, 14.4903,
-27.7202

■ 230.3040, 12.1751,
-31.8386

Harmonies

Analogous

The Analogous color harmony consists of three colors that are next to each other on the color wheel.



175.5060, -14.0535, 27.6202



174.2290, -17.3679, 17.3392



172.1840, -15.8667, 2.4696

Triad

The Triadic color harmony groups three colors that are evenly spaced from another and form a triangle on the color wheel.



174.2290, -17.3679, 17.3392



167.1740, 9.2812, -36.9866



177.4220, 10.1450, 12.7849

Complementary

The Complementary color scheme is a pair of colors which are on the opposite of each other on the color wheel.



174.2290, -17.3679, 17.3392



158.7710, 17.3679, -17.3392

Split Complementary

Split-complementary colors differ from the complementary color scheme. The scheme consists of three colors, the original color and two neighbors of the complement color.



175.5060, 16.0195, -4.8288



174.2290, -17.3679, 17.3392



168.3190, 16.1117, -34.4828

Square

The Square scheme is like the rectangle color scheme, but the four colors are evenly spaced on the color wheel.



174.2290, -17.3679, 17.3392



167.7100, -0.3500, -27.8097



171.9660, 18.2578, -22.7722



177.6210, 1.6658, 25.7654

Rectangle

The Rectangle color scheme consists of four colors that form a rectangle on the color wheel.



174.2290, -17.3679, 17.3392



170.4430, -12.0504, -8.2815



171.9660, 18.2578, -22.7722



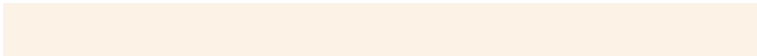
176.9590, 12.3452, 7.0520

Sweetspot

The Sweet Spot groups the original color and five complimentary colors.



174.2290, -17.3679, 17.3392



244.2090, -7.0050, 6.8327



158.1810, 2.3758, 31.4133



122.7680, -4.8156, 4.5885



0.0000, 0.0000, 0.0000



128.0000, 0.0000, 0.0000

Same Dimension

The Same Dimension uses a secret algorithm to generate beautiful new colors.



174.2290, -17.3679, 17.3392



221.7650, -26.9991, 26.5161



186.5340, -23.4343, 3.0397



93.5120, -3.2104, 3.0590



102.7300, -50.6459, 51.1028



21.0200, -10.3629, 10.5065

Inverse Universe

The Inverse Universe completely reimagines the original color for something new.



158.7710, 17.3679, -17.3392



197.8220, 26.7098, -27.0309



146.4660, 23.4343, -3.0397



90.4880, 3.2104, -3.0590



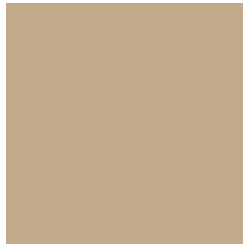
57.6830, 50.9353, -50.5880



11.9800, 10.3629, -10.5065

Previews

White Background



This preview shows how the YUV color 174.2290, -17.3679, 17.3392 looks on a white background.

Color Contrast Check

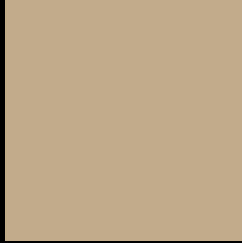
Large Text (above 18pt) WCAG AA × Fail

Any Text WCAG AA × Fail

Large Text (above 18pt) WCAG AAA × Fail

Any Text WCAG AAA × Fail

Black Background



This preview shows how the YUV color 174.2290, -17.3679, 17.3392 looks on a black background.

Color Contrast Check

Large Text (above 18pt) WCAG AA ✓ Pass

Any Text WCAG AA ✓ Pass

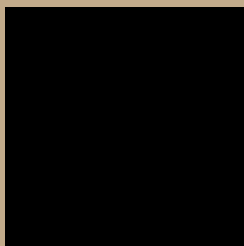
Large Text (above 18pt) WCAG AAA ✓ Pass

Any Text WCAG AAA ✓ Pass

If you want to check with other color combinations, try the [Color Contrast Checker](#).

YUV 174.2290, -17.3679, 17.3392

Background



This preview shows how black text looks on a background with the YUV color 174.2290, -17.3679, 17.3392.



This preview shows how white text looks on a background with the YUV color 174.2290, -17.3679, 17.3392.

Color Blindness Simulation

Color vision deficiency is a very complex topic, and I could not describe the different causes any better than Wikipedia does, so if you want to learn more, you should check out their [article about color blindness](#).

Dichromacy



Original Color

174.2290, -17.3679, 17.3392

Protanopia

173.4130, -16.4726, 10.1618

Deuteranopia

174.6860, -17.1002, 24.8314



Tritanopia

177.2350, 0.3771, 19.0879

Trichromacy



Original Color

174.2290, -17.3679, 17.3392

Protanomaly

173.7230, -16.6254, 12.5209

Deuteranomaly

174.3760, -16.9474, 22.4722

Tritanomaly

176.2150, -6.0220, 18.2284

Monochromacy



Original Color

174.2290, -17.3679, 17.3392

Achromatopsia

174.0000, 0.0000, 0.0000

Achromatomaly

174.0240, -6.4208, 6.1180

CSS Examples

Text

The CSS property to change the color of the text to YUV 174.2290, -17.3679, 17.3392 is called "color". The color property can be set on classes, ids or directly on the HTML element.

This example shows how text in the color `rgb(194, 171, 139)` looks like.

```
.text, #text, p{  
    color:rgb(194, 171, 139)  
}
```

If you want to add a text shadow in that color use the text-shadow property, you can generate a text shadow directly with our [CSS Text Shadow Generator](#).

Here you see how black text with a 4 pixel rgb(194, 171, 139) colored shadow looks like.

```
.shadow{ text-shadow: 4px 4px 2px rgb(194, 171, 139) }
```

Border

The CSS property to change the border of an element to YUV 174.2290, -17.3679, 17.3392 is called "border".

The border property can be set on classes, ids or directly on the HTML element.

This example shows the color as border, it can be applied via the CSS property "border" or "border-color".

```
.border, #border, table{ border:4px solid rgb(194, 171, 139) }
```


If only the border color should be changed use the property `border-color`.

```
.border{ border-color:rgb(194, 171, 139) }
```

If you want to add a box shadow in that color use:

Here you see how a box with a 4 pixel `rgb(194, 171, 139)` colored shadow looks like.

```
.boxshadow{ -moz-box-shadow:4px 4px 4px  
4px rgb(194, 171, 139); -webkit-box-  
shadow:4px 4px 4px 4px rgb(194, 171, 139);  
box-shadow:4px 4px 4px 4px rgb(194, 171,  
139) }
```

Background

The CSS property to change the background color of an element to YUV 174.2290, -17.3679, 17.3392 is called "background". The background property can be set on classes, ids or directly on the HTML element.

```
.background, #background, body{  
background: rgb(194, 171, 139) }
```

If only the background color should be changed can be used:

```
.background{ background-color: rgb(194,  
171, 139) }
```

This example shows the color as background, it is applied via the CSS property "background".

To optimize and compress your CSS code, you can use our [online CSS compressor and optimizer](#) based on csstidy. If you want to create a linear or radial gradient as background or border, check our [CSS Gradient Generator](#).

Hey! You found this booklet interesting? Support Converting Colors with the new Membership Option!

The pro membership hides all ads, plus gives you double the colors in the color bucket, and more awesome pro features!

[Learn more, Memberships starting at \\$2.50/m!](#)

**Follow me
on Twitter!**

@ConvertingColor