

Converting Colors

YUV(174.4870, -21.9321,
34.6529)

Have a look what the booklet for
YUV(174.4870, -21.9321, 34.6529)
contains.

YUV(174.4870, -21.9321, 34.6529)	3
<i>Conversions</i>	4
<i>Details</i>	6
<i>Harmonies</i>	12
<i>Previews</i>	24
<i>Color Blindness Simulation</i>	28
<i>CSS Examples</i>	31

Color

**YUV(174.4870, -21.9321,
34.6529)**

Conversions

Conversions Part 1

Format	Color
Hex	D6A382
RGB	214, 163, 130
RGB Percent	84%, 64%, 51%
CMY	0.1608, 0.3608, 0.4902
CMYK	0.00, 0.24, 0.39, 0.16
HSL	24°, 51%, 67%
HSV	24°, 39%, 84%
XYZ	44.8580, 42.1022, 26.8814
YIQ	174.4870, 40.9890, 0.5490

Conversions

Conversions Part 2

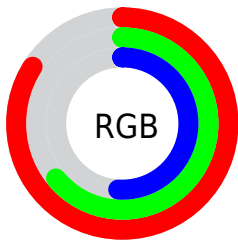
Format	Color
RYB	214, 184, 130
Decimal	14066562
CIELab	70.94, 14.54, 24.43
CIELCh	71, 28.432, 59.242
Yxy	42.1022, 0.3940, 0.3698
Android (android.graphics.Color)	4292256642 (0xFFD6A382)
YUV	174.4870, -21.9321, 34.6529
Hunter-Lab	64.8862, 9.8521, 20.8574

Details

The YUV color **174.4870, -21.9321, 34.6529** is a light color, and the websafe version is hex **CC9966**. A complement of this color would be **169.5130, 21.9321, -34.6529**, and the grayscale version is **175.0000, 0.0000, 0.0000**.

A 20% lighter version of the original color is **225.0730, -20.7420, 26.2460**, and **121.2200, -20.3215, 31.3791** is the 20% darker color. If you saturate the color by 10%, you get **164.4620, -27.3428, 43.4448**, and if you desaturate by 10%, it is **184.5120, -16.5214, 25.8610**.

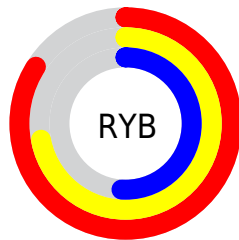
Distribution



Red (84%)

Green (64%)

Blue (51%)



Red (84%)

Yellow (72%)

Blue (51%)

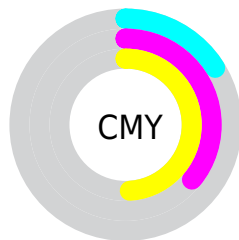


Cyan (0%)

Magenta (24%)

Yellow (39%)

Black (16%)



Cyan (16%)

Magenta (36%)

Yellow (49%)

Brightness & Saturation Gradients

These gradients show how the YUV color 174.4870, -21.9321, 34.6529 changes by changing the brightness by 10 percent. The first figure shows a shift by +10% for each color and the second figure -10%.

Similar to the brightness gradients but the following saturation gradients show a change of the YUV color 174.4870, -21.9321, 34.6529 by changing the saturation by 10% instead.

■ 174.4870,
-21.9321, 34.6529

■ 174.4870,
-21.9321, 34.6529

255.0000, 0.0000,
0.0000

■ 147.7040,
-21.0531, 32.7086

■ 225.0730,
-20.7420, 26.2460

■ 121.2200,
-20.3215, 31.3791

■ 244.7010,
-16.6146, 9.0322

■ 96.4370, -19.4424,
29.4348

■ 253.1760, -6.9888,
1.5996

■ 72.0670, -18.2740,
28.0052

■ 48.9850, -17.2476,
25.4462

■ 27.5870, -13.6004,
22.2872

■ 8.9700, -4.4222,

18.4433

■ 0.0000, 0.0000,
0.0000

■ 174.4870,
-21.9321, 34.6529

■ 174.4870,
-21.9321, 34.6529

■ 164.4620,
-27.3428, 43.4448

■ 184.5120,
-16.5214, 25.8610

■ 154.3230,
-33.1902, 52.3367

■ 194.6510,
-10.6739, 16.9691

■ 144.2980,
-38.6009, 61.1287

■ 204.6760, -5.2633,
8.1771

■ 134.1590,
-44.4484, 70.0206

■ 214.8150, 0.5842,
-0.7148

■ 124.1340,
-49.8591, 78.8125

■ 224.8400, 5.9949,
-9.5067

■ 114.1090,
-55.2697, 87.6044

■ 234.5230, 10.0952,
-17.9987

■ 113.2940,
-55.8539, 88.3192

■ 242.1540, 6.3331,
-24.6911

■ 242.7410, 6.0437,
-25.2059

Harmonies

Analogous

The Analogous color harmony consists of three colors that are next to each other on the color wheel.



175.9470, -12.7919, 43.0195



174.4870, -21.9321, 34.6529



172.5790, -24.9354, 17.9092

Triad

The Triadic color harmony groups three colors that are evenly spaced from another and form a triangle on the color wheel.



174.4870, -21.9321, 34.6529



162.2560, 4.8038, -47.5825



175.9180, 21.2394, 0.9489

Complementary

The Complementary color scheme is a pair of colors which are on the opposite of each other on the color wheel.



174.4870, -21.9321, 34.6529



169.5130, 21.9321, -34.6529

Split Complementary

Split-complementary colors differ from the complementary color scheme. The scheme consists of three colors, the original color and two neighbors of the complement color.



170.8220, 26.7098, -27.0309



174.4870, -21.9321, 34.6529



160.1480, 18.6610, -58.8888

Square

The Square scheme is like the rectangle color scheme, but the four colors are evenly spaced on the color wheel.



174.4870, -21.9321, 34.6529



165.6040, -9.6648, -26.8397



163.8530, 26.2015, -50.7371



177.7270, 10.9806, 24.7954

Rectangle

The Rectangle color scheme consists of four colors that form a rectangle on the color wheel.



174.4870, -21.9321, 34.6529



170.3600, -22.8555, 4.0693



163.8530, 26.2015, -50.7371



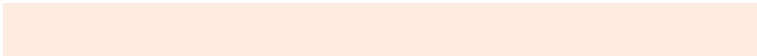
174.4330, 23.4505, -8.2727

Sweetspot

The Sweet Spot groups the original color and five complimentary colors.



174.4870, -21.9321, 34.6529



240.3130, -8.0423, 12.8805



161.0440, 10.3313, 46.4424



119.4910, -4.6791, 7.4624



0.0000, 0.0000, 0.0000



128.0000, 0.0000, 0.0000

Same Dimension

The Same Dimension uses a secret algorithm to generate beautiful new colors.



174.4870, -21.9321, 34.6529



198.4690, -31.2902, 49.5777



198.5540, -33.7971, 13.5461



102.2240, -3.0684, 4.1886



90.4580, -44.5958, 70.6353



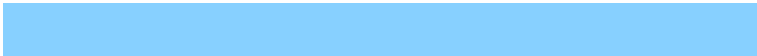
22.8360, -11.2581, 17.6838

Inverse Universe

The Inverse Universe completely reimagines the original color for something new.



169.5130, 21.9321, -34.6529



191.5310, 31.2902, -49.5777



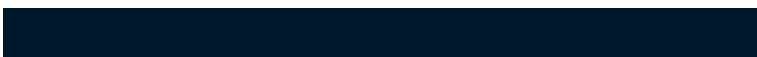
145.4460, 33.7971, -13.5461



101.3630, 2.7790, -4.7034



80.5420, 44.5958, -70.6353



20.1640, 11.2581, -17.6838

Previews

White Background



This preview shows how the YUV color 174.4870, -21.9321, 34.6529 looks on a white background.

Color Contrast Check

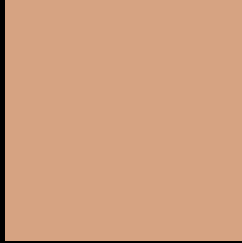
Large Text (above 18pt) WCAG AA × Fail

Any Text WCAG AA × Fail

Large Text (above 18pt) WCAG AAA × Fail

Any Text WCAG AAA × Fail

Black Background



This preview shows how the YUV color 174.4870, -21.9321, 34.6529 looks on a black background.

Color Contrast Check

Large Text (above 18pt) WCAG AA ✓ Pass

Any Text WCAG AA ✓ Pass

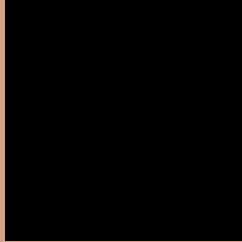
Large Text (above 18pt) WCAG AAA ✓ Pass

Any Text WCAG AAA ✓ Pass

If you want to check with other color combinations, try the [Color Contrast Checker](#).

YUV 174.4870, -21.9321, 34.6529

Background



This preview shows how black text looks on a background with the YUV color 174.4870, -21.9321, 34.6529.



This preview shows how white text looks on a background with the YUV color 174.4870, -21.9321,

Color Blindness Simulation

Color vision deficiency is a very complex topic, and I could not describe the different causes any better than Wikipedia does, so if you want to learn more, you should check out their [article about color blindness](#).

Dichromacy



Original Color

174.4870, -21.9321, 34.6529

Protanopia

172.8430, -18.6566, 10.6617

Deuteranopia

174.0300, -22.1998, 27.1607



Tritanopia

177.3080, -3.6028, 35.6869

Trichromacy



Original Color

174.4870, -21.9321, 34.6529

Protanomaly

173.5560, -19.9941, 19.6834

Deuteranomaly

174.3400, -22.3526, 29.5198

Tritanomaly

176.4730, -10.5862, 35.5422

Monochromacy



Original Color

174.4870, -21.9321, 34.6529

Achromatopsia

174.0000, 0.0000, 0.0000

Achromatomaly

174.3130, -8.0423, 12.8805

CSS Examples

Text

The CSS property to change the color of the text to YUV 174.4870, -21.9321, 34.6529 is called "color". The color property can be set on classes, ids or directly on the HTML element.

This example shows how text in the color `rgb(214, 163, 130)` looks like.

```
.text, #text, p{  
    color:rgb(214, 163, 130)  
}
```

If you want to add a text shadow in that color use the text-shadow property, you can generate a text shadow directly with our [CSS Text Shadow Generator](#).

Here you see how black text with a 4 pixel rgb(214, 163, 130) colored shadow looks like.

```
.shadow{ text-shadow: 4px 4px 2px rgb(214, 163, 130) }
```

Border

The CSS property to change the border of an element to YUV 174.4870, -21.9321, 34.6529 is called "border".

The border property can be set on classes, ids or directly on the HTML element.

This example shows the color as border, it can be applied via the CSS property "border" or "border-color".

```
.border, #border, table{ border:4px solid rgb(214, 163, 130) }
```


If only the border color should be changed use the property `border-color`.

```
.border{ border-color:rgb(214, 163, 130) }
```

If you want to add a box shadow in that color use:

Here you see how a box with a 4 pixel `rgb(214, 163, 130)` colored shadow looks like.

```
.boxshadow{ -moz-box-shadow:4px 4px 4px  
4px rgb(214, 163, 130); -webkit-box-  
shadow:4px 4px 4px 4px rgb(214, 163, 130);  
box-shadow:4px 4px 4px 4px rgb(214, 163,  
130) }
```

Background

The CSS property to change the background color of an element to YUV 174.4870, -21.9321, 34.6529 is called "background". The background property can be set on classes, ids or directly on the HTML element.

```
.background, #background, body{  
background: rgb(214, 163, 130) }
```

If only the background color should be changed can be used:

```
.background{ background-color: rgb(214,  
163, 130) }
```

This example shows the color as background, it is applied via the CSS property "background".

To optimize and compress your CSS code, you can use our [online CSS compressor and optimizer](#) based on csstidy. If you want to create a linear or radial gradient as background or border, check our [CSS Gradient Generator](#).

Hey! You found this booklet interesting? Support Converting Colors with the new Membership Option!

The pro membership hides all ads, plus gives you double the colors in the color bucket, and more awesome pro features!

[Learn more, Memberships starting at \\$2.50/m!](#)

**Follow me
on Twitter!**

@ConvertingColor