

Converting Colors

YUV(174.5650, -10.1385,
31.9535)

Have a look what the booklet for
YUV(174.5650, -10.1385, 31.9535)
contains.

YUV(174.5650, -10.1385, 31.9535)	3
<i>Conversions</i>	4
<i>Details</i>	6
<i>Harmonies</i>	12
<i>Previews</i>	24
<i>Color Blindness Simulation</i>	28
<i>CSS Examples</i>	31

Color

**YUV(174.5650, -10.1385,
31.9535)**

Conversions

Conversions Part 1

Format	Color
Hex	D3A09A
RGB	211, 160, 154
RGB Percent	83%, 63%, 60%
CMY	0.1725, 0.3725, 0.3961
CMYK	0.00, 0.24, 0.27, 0.17
HSL	6°, 39%, 72%
HSV	6°, 27%, 83%
XYZ	45.2675, 41.3236, 36.1622
YIQ	174.5650, 32.3220, 8.9460

Conversions

Conversions Part 2

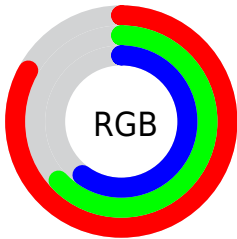
Format	Color
RYB	211, 161, 154
Decimal	13869210
CIELab	70.40, 18.05, 10.47
CIElCh	70, 20.861, 30.110
Yxy	41.3236, 0.3688, 0.3366
Android (android.graphics.Color)	4292059290 (0xFFD3A09A)
YUV	174.5650, -10.1385, 31.9535
Hunter-Lab	64.2834, 13.2013, 11.6452

Details

The YUV color $174.5650, -10.1385, 31.9535$ is a light color, and the websafe version is hex $CC9999$. A complement of this color would be $190.4350, 10.1385, -31.9535$, and the grayscale version is $175.0000, 0.0000, 0.0000$.

A 20% lighter version of the original color is $226.1620, -8.9539, 25.2909$, and $121.4830, -9.1121, 29.3944$ is the 20% darker color. If you saturate the color by 10%, you get $161.0180, -13.8129, 43.8342$, and if you desaturate by 10%, it is $188.1120, -6.4642, 20.0728$.

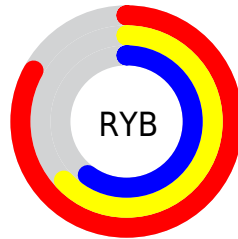
Distribution



Red (83%)

Green (63%)

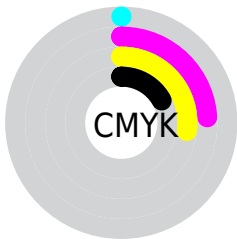
Blue (60%)



Red (83%)

Yellow (63%)

Blue (60%)

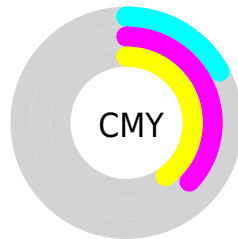


Cyan (0%)

Magenta (24%)

Yellow (27%)

Black (17%)



Cyan (17%)

Magenta (37%)

Yellow (40%)

Brightness & Saturation Gradients

These gradients show how the YUV color 174.5650, -10.1385, 31.9535 changes by changing the brightness by 10 percent. The first figure shows a shift by +10% for each color and the second figure -10%.

Similar to the brightness gradients but the following saturation gradients show a change of the YUV color 174.5650, -10.1385, 31.9535 by changing the saturation by 10% instead.

■ 174.5650,
-10.1385, 31.9535

■ 174.5650,
-10.1385, 31.9535

255.0000, 0.0000,
0.0000

■ 147.9670, -9.8437,
30.7239

■ 226.1620, -8.9539,
25.2909

■ 121.4830, -9.1121,
29.3944

■ 245.9040, -4.3897,
7.9772

■ 96.8850, -8.8173,
28.1649

■ 72.4010, -8.0857,
26.8353

■ 49.3190, -7.0593,
24.2762

■ 27.3080, -7.0538,
22.5319

■ 9.9810, -4.4276,

20.1877

■ 0.0000, 0.0000,
0.0000

■ 174.5650,
-10.1385, 31.9535

■ 174.5650,
-10.1385, 31.9535

■ 161.0180,
-13.8129, 43.8342

■ 188.1120, -6.4642,
20.0728

■ 147.4710,
-17.4872, 55.7149

■ 201.6590, -2.7899,
8.1921

■ 133.9240,
-21.1615, 67.5957

■ 215.2060, 0.8844,
-3.6887

■ 120.3770,
-24.8359, 79.4764

■ 228.7530, 4.5588,
-15.5694

■ 107.4170,
-28.7996, 90.8423

■ 241.2570, 6.7753,
-26.5354

■ 93.7560, -32.9107,
102.8230

■ 241.8440, 6.4859,
-27.0502

■ 80.2090, -36.5850,
114.7037

■ 76.0030, -37.4695,
118.3924

Harmonies

Analogous

The Analogous color harmony consists of three colors that are next to each other on the color wheel.



175.5460, -1.2552, 29.3392



174.5650, -10.1385, 31.9535



173.5120, -16.5214, 25.8610

Triad

The Triadic color harmony groups three colors that are evenly spaced from another and form a triangle on the color wheel.



174.5650, -10.1385, 31.9535



166.7450, -6.7763, -19.9474



170.9280, 19.2625, -18.3539

Complementary

The Complementary color scheme is a pair of colors which are on the opposite of each other on the color wheel.



174.5650, -10.1385, 31.9535



190.4350, 10.1385, -31.9535

Split Complementary

Split-complementary colors differ from the complementary color scheme. The scheme consists of three colors, the original color and two neighbors of the complement color.



166.6010, 18.4377, -33.8531



174.5650, -10.1385, 31.9535



165.0020, 3.4500, -33.3278

Square

The Square scheme is like the rectangle color scheme, but the four colors are evenly spaced on the color wheel.



174.5650, -10.1385, 31.9535



169.3790, -14.9768, -2.9634



164.3740, 12.6336, -38.9160



174.0230, 15.2717, 1.7338

Rectangle

The Rectangle color scheme consists of four colors that form a rectangle on the color wheel.



174.5650, -10.1385, 31.9535



172.3000, -18.3889, 18.1539



164.3740, 12.6336, -38.9160



169.5960, 19.4262, -24.2017

Sweetspot

The Sweet Spot groups the original color and five complimentary colors.



174.5650, -10.1385, 31.9535



242.1540, -3.5269, 11.2659



176.8570, 13.8745, 29.9434



119.4740, -2.2057, 7.4773



0.0000, 0.0000, 0.0000



128.0000, 0.0000, 0.0000

Same Dimension

The Same Dimension uses a secret algorithm to generate beautiful new colors.



174.5650, -10.1385, 31.9535



202.8010, -14.6919, 45.7785



191.0010, -18.2415, 17.5391



97.8760, -1.9109, 6.2477



60.7980, -29.9734, 94.0162



14.6070, -7.2013, 23.1467

Inverse Universe

The Inverse Universe completely reimagines the original color for something new.



190.4350, 10.1385, -31.9535



225.1990, 14.6919, -45.7785



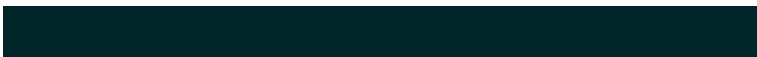
173.9990, 18.2415, -17.5391



100.5370, 2.2003, -5.7329



107.7890, 29.6840, -94.5310



26.3930, 7.2013, -23.1467

Previews

White Background



This preview shows how the YUV color 174.5650, -10.1385, 31.9535 looks on a white background.

Color Contrast Check

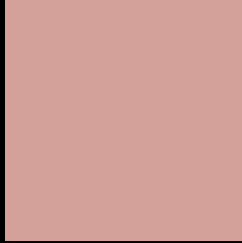
Large Text (above 18pt) WCAG AA × Fail

Any Text WCAG AA × Fail

Large Text (above 18pt) WCAG AAA × Fail

Any Text WCAG AAA × Fail

Black Background



This preview shows how the YUV color 174.5650, -10.1385, 31.9535 looks on a black background.

Color Contrast Check

Large Text (above 18pt) WCAG AA ✓ Pass

Any Text WCAG AA ✓ Pass

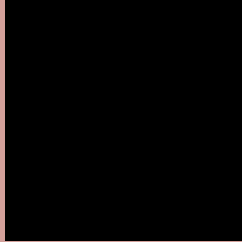
Large Text (above 18pt) WCAG AAA ✓ Pass

Any Text WCAG AAA ✓ Pass

If you want to check with other color combinations, try the [Color Contrast Checker](#).

YUV 174.5650, -10.1385, 31.9535

Background



This preview shows how black text looks on a background with the YUV color 174.5650, -10.1385, 31.9535.



This preview shows how white text looks on a background with the YUV color 174.5650, -10.1385, 31.9535.

Color Blindness Simulation

Color vision deficiency is a very complex topic, and I could not describe the different causes any better than Wikipedia does, so if you want to learn more, you should check out their [article about color blindness](#).

Dichromacy



Original Color

174.5650, -10.1385, 31.9535

Protanopia

172.4260, -6.1260, 4.8884

Deuteranopia

173.4880, -10.1006, 19.7430



Tritanopia

175.8130, -2.8658, 32.6130

Trichromacy



Original Color

174.5650, -10.1385, 31.9535

Protanomaly

173.4380, -7.6109, 14.5249

Deuteranomaly

173.8090, -10.2588, 23.8465

Tritanomaly

175.4170, -5.6286, 32.0833

Monochromacy



Original Color

174.5650, -10.1385, 31.9535

Achromatopsia

175.0000, 0.0000, 0.0000

Achromatomaly

175.0400, -3.9637, 11.3659

CSS Examples

Text

The CSS property to change the color of the text to YUV 174.5650, -10.1385, 31.9535 is called "color". The color property can be set on classes, ids or directly on the HTML element.

This example shows how text in the color `rgb(211, 160, 154)` looks like.

```
.text, #text, p{  
    color:rgb(211, 160, 154)  
}
```

If you want to add a text shadow in that color use the text-shadow property, you can generate a text shadow directly with our [CSS Text Shadow Generator](#).

Here you see how black text with a 4 pixel rgb(211, 160, 154) colored shadow looks like.

```
.shadow{ text-shadow: 4px 4px 2px rgb(211, 160, 154) }
```

Border

The CSS property to change the border of an element to YUV 174.5650, -10.1385, 31.9535 is called "border".

The border property can be set on classes, ids or directly on the HTML element.

This example shows the color as border, it can be applied via the CSS property "border" or "border-color".

```
.border, #border, table{ border:4px solid rgb(211, 160, 154) }
```


If only the border color should be changed use the property `border-color`.

```
.border{ border-color:rgb(211, 160, 154) }
```

If you want to add a box shadow in that color use:

Here you see how a box with a 4 pixel `rgb(211, 160, 154)` colored shadow looks like.

```
.boxshadow{ -moz-box-shadow:4px 4px 4px  
4px rgb(211, 160, 154); -webkit-box-  
shadow:4px 4px 4px 4px rgb(211, 160, 154);  
box-shadow:4px 4px 4px 4px rgb(211, 160,  
154) }
```

Background

The CSS property to change the background color of an element to YUV 174.5650, -10.1385, 31.9535 is called "background". The background property can be set on classes, ids or directly on the HTML element.

```
.background, #background, body{  
background: rgb(211, 160, 154) }
```

If only the background color should be changed can be used:

```
.background{ background-color: rgb(211,  
160, 154) }
```

This example shows the color as background, it is applied via the CSS property "background".

To optimize and compress your CSS code, you can use our [online CSS compressor and optimizer](#) based on csstidy. If you want to create a linear or radial gradient as background or border, check our [CSS Gradient Generator](#).

Hey! You found this booklet interesting? Support Converting Colors with the new Membership Option!

The pro membership hides all ads, plus gives you double the colors in the color bucket, and more awesome pro features!

[Learn more, Memberships starting at \\$2.50/m!](#)

**Follow me
on Twitter!**

@ConvertingColor