

Converting Colors

YUV(174.8090, -10.2588,
23.8465)

Have a look what the booklet for
YUV(174.8090, -10.2588, 23.8465)
contains.

YUV(174.8090, -10.2588, 23.8465)	3
<i>Conversions</i>	4
<i>Details</i>	6
<i>Harmonies</i>	12
<i>Previews</i>	24
<i>Color Blindness Simulation</i>	28
<i>CSS Examples</i>	31

Color

**YUV(174.8090, -10.2588,
23.8465)**

Conversions

Conversions Part 1

Format	Color
Hex	CAA59A
RGB	202, 165, 154
RGB Percent	79%, 65%, 60%
CMY	0.2078, 0.3529, 0.3961
CMYK	0.00, 0.18, 0.24, 0.21
HSL	14°, 31%, 70%
HSV	14°, 24%, 79%
XYZ	43.6450, 41.7999, 36.3397
YIQ	174.8090, 25.5830, 4.4230

Conversions

Conversions Part 2

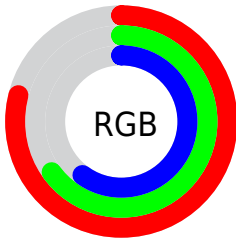
Format	Color
R _Y B	202, 168, 154
Decimal	13280666
CIE Lab	70.73, 11.90, 10.81
CIE LCh	71, 16.075, 42.254
Yxy	41.7999, 0.3584, 0.3432
Android (android.graphics.Color)	4291470746 (0xFFCAA59A)
YUV	174.8090, -10.2588, 23.8465
Hunter-Lab	64.6529, 7.3569, 11.9316

Details

The YUV color $174.8090, -10.2588, 23.8465$ is a light color, and the websafe version is hex $CC9999$. A complement of this color would be $181.1910, 10.2588, -23.8465$, and the grayscale version is $175.0000, 0.0000, 0.0000$.

A 20% lighter version of the original color is $229.0970, -10.4008, 22.7169$, and $122.0260, -9.3798, 21.9022$ is the 20% darker color. If you saturate the color by 10%, you get $163.1370, -14.3645, 34.0829$, and if you desaturate by 10%, it is $186.4810, -6.1531, 13.6102$.

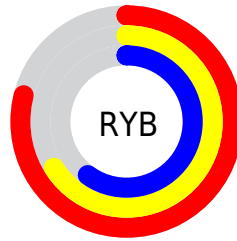
Distribution



Red (79%)

Green (65%)

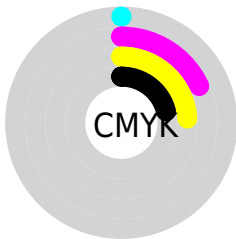
Blue (60%)



Red (79%)

Yellow (66%)

Blue (60%)

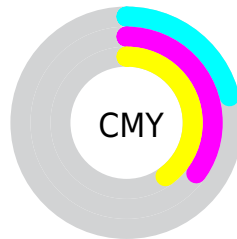


Cyan (0%)

Magenta (18%)

Yellow (24%)

Black (21%)



Cyan (21%)

Magenta (35%)

Yellow (40%)

Brightness & Saturation Gradients

These gradients show how the YUV color 174.8090, -10.2588, 23.8465 changes by changing the brightness by 10 percent. The first figure shows a shift by +10% for each color and the second figure -10%.

Similar to the brightness gradients but the following saturation gradients show a change of the YUV color 174.8090, -10.2588, 23.8465 by changing the saturation by 10% instead.

■ 174.8090,
-10.2588, 23.8465

■ 174.8090,
-10.2588, 23.8465

255.0000, 0.0000,
0.0000

■ 148.2110, -9.9640,
22.6170

■ 229.0970,
-10.4008, 22.7169

■ 122.0260, -9.3798,
21.9022

■ 249.4260, -6.1260,
4.8884

■ 97.4280, -9.0850,
20.6726

■ 72.9440, -8.3534,
19.3431

■ 50.4600, -7.6218,
18.0136

■ 28.7480, -7.7638,
16.8840

■ 8.0730, -3.9800,

16.5990

■ 0.0000, 0.0000,
0.0000

■ 174.8090,
-10.2588, 23.8465

■ 174.8090,
-10.2588, 23.8465

■ 163.1370,
-14.3645, 34.0829

■ 186.4810, -6.1531,
13.6102

■ 152.0520,
-18.7596, 43.8044

■ 197.5660, -1.7580,
3.8886

■ 140.2660,
-23.3021, 54.1407

■ 209.3520, 2.7845,
-6.4477

■ 129.1810,
-27.6972, 63.8623

■ 220.4370, 7.1796,
-16.1692

■ 117.5090,
-31.8029, 74.0986

■ 232.1090, 11.2853,
-26.4056

■ 106.4240,
-36.1980, 83.8202

■ 239.1530, 7.8126,
-32.5832

■ 94.7520, -40.3037,
94.0565

■ 87.4000, -43.0882,
100.5042

Harmonies

Analogous

The Analogous color harmony consists of three colors that are next to each other on the color wheel.



175.7150, -4.2965, 24.8059



174.8090, -10.2588, 23.8465



173.5540, -13.5841, 17.0541

Triad

The Triadic color harmony groups three colors that are evenly spaced from another and form a triangle on the color wheel.



174.8090, -10.2588, 23.8465



168.5970, -2.2663, -19.8176



173.2130, 13.6990, -7.2028

Complementary

The Complementary color scheme is a pair of colors which are on the opposite of each other on the color wheel.



174.8090, -10.2588, 23.8465



181.1910, 10.2588, -23.8465

Split Complementary

Split-complementary colors differ from the complementary color scheme. The scheme consists of three colors, the original color and two neighbors of the complement color.



170.6520, 14.4686, -20.7428



174.8090, -10.2588, 23.8465



167.9040, 5.4703, -27.9798

Square

The Square scheme is like the rectangle color scheme, but the four colors are evenly spaced on the color wheel.



174.8090, -10.2588, 23.8465



170.1380, -9.4350, -7.1370



168.2120, 11.7275, -28.2499



174.9760, 9.8718, 7.0370

Rectangle

The Rectangle color scheme consists of four colors that form a rectangle on the color wheel.



174.8090, -10.2588, 23.8465



172.3960, -13.9992, 10.1767



168.2120, 11.7275, -28.2499



172.4080, 14.5889, -12.6358

Sweetspot

The Sweet Spot groups the original color and five complimentary colors.



174.8090, -10.2588, 23.8465



244.7300, -3.8109, 9.0068



172.6840, 9.5228, 25.7101



122.0500, -2.4896, 5.2182



0.0000, 0.0000, 0.0000



128.0000, 0.0000, 0.0000

Same Dimension

The Same Dimension uses a secret algorithm to generate beautiful new colors.



174.8090, -10.2588, 23.8465



213.1050, -15.8278, 36.7419



188.3100, -16.9148, 12.0061



96.1640, -2.0529, 5.1182



71.9400, -35.4664, 82.4906



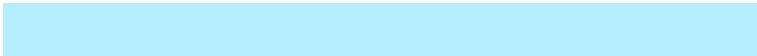
16.6450, -8.2060, 18.7283

Inverse Universe

The Inverse Universe completely reimagines the original color for something new.



181.1910, 10.2588, -23.8465



222.8950, 15.8278, -36.7419



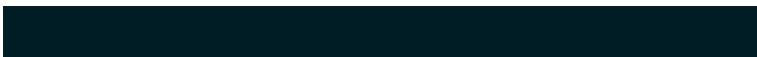
167.6900, 16.9148, -12.0061



97.8360, 2.0529, -5.1182



94.0600, 35.4664, -82.4906



21.3550, 8.2060, -18.7283

Previews

White Background



This preview shows how the YUV color 174.8090, -10.2588, 23.8465 looks on a white background.

Color Contrast Check

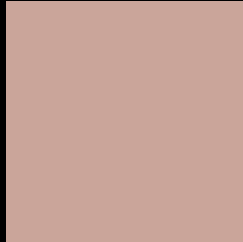
Large Text (above 18pt) WCAG AA × Fail

Any Text WCAG AA × Fail

Large Text (above 18pt) WCAG AAA × Fail

Any Text WCAG AAA × Fail

Black Background



This preview shows how the YUV color 174.8090, -10.2588, 23.8465 looks on a black background.

Color Contrast Check

Large Text (above 18pt) WCAG AA ✓ Pass

Any Text WCAG AA ✓ Pass

Large Text (above 18pt) WCAG AAA ✓ Pass

Any Text WCAG AAA ✓ Pass

If you want to check with other color combinations, try the [Color Contrast Checker](#).

YUV 174.8090, -10.2588, 23.8465

Background



This preview shows how black text looks on a background with the YUV color 174.8090, -10.2588, 23.8465.



This preview shows how white text looks on a background with the YUV color 174.8090, -10.2588, 23.8465.

23.8465.

Color Blindness Simulation

Color vision deficiency is a very complex topic, and I could not describe the different causes any better than Wikipedia does, so if you want to learn more, you should check out their [article about color blindness](#).

Dichromacy



Original Color

174.8090, -10.2588, 23.8465

Protanopia

173.3830, -7.5838, 5.8031

Deuteranopia

174.4880, -10.1006, 19.7430



Tritanopia

175.9260, -0.9495, 24.6209

Trichromacy



Original Color

174.8090, -10.2588, 23.8465

Protanomaly

173.9000, -8.3317, 12.3657

Deuteranomaly

174.4990, -10.1060, 21.4874

Tritanomaly

175.4160, -4.1491, 24.1912

Monochromacy



Original Color

174.8090, -10.2588, 23.8465

Achromatopsia

175.0000, 0.0000, 0.0000

Achromatomaly

174.7300, -3.8109, 9.0068

CSS Examples

Text

The CSS property to change the color of the text to YUV 174.8090, -10.2588, 23.8465 is called "color". The color property can be set on classes, ids or directly on the HTML element.

This example shows how text in the color `rgb(202, 165, 154)` looks like.

```
.text, #text, p{  
    color:rgb(202, 165, 154)  
}
```

If you want to add a text shadow in that color use the text-shadow property, you can generate a text shadow directly with our [CSS Text Shadow Generator](#).

Here you see how black text with a 4 pixel rgb(202, 165, 154) colored shadow looks like.

```
.shadow{ text-shadow: 4px 4px 2px rgb(202, 165, 154) }
```

Border

The CSS property to change the border of an element to YUV 174.8090, -10.2588, 23.8465 is called "border".

The border property can be set on classes, ids or directly on the HTML element.

This example shows the color as border, it can be applied via the CSS property "border" or "border-color".

```
.border, #border, table{ border:4px solid rgb(202, 165, 154) }
```


If only the border color should be changed use the property `border-color`.

```
.border{ border-color:rgb(202, 165, 154) }
```

If you want to add a box shadow in that color use:

Here you see how a box with a 4 pixel `rgb(202, 165, 154)` colored shadow looks like.

```
.boxshadow{ -moz-box-shadow:4px 4px 4px  
4px rgb(202, 165, 154); -webkit-box-  
shadow:4px 4px 4px 4px rgb(202, 165, 154);  
box-shadow:4px 4px 4px 4px rgb(202, 165,  
154) }
```

Background

The CSS property to change the background color of an element to YUV 174.8090, -10.2588, 23.8465 is called "background". The background property can be set on classes, ids or directly on the HTML element.

```
.background, #background, body{  
background: rgb(202, 165, 154) }
```

If only the background color should be changed can be used:

```
.background{ background-color: rgb(202,  
165, 154) }
```

This example shows the color as background, it is applied via the CSS property "background".

To optimize and compress your CSS code, you can use our [online CSS compressor and optimizer](#) based on csstidy. If you want to create a linear or radial gradient as background or border, check our [CSS Gradient Generator](#).

Hey! You found this booklet interesting? Support Converting Colors with the new Membership Option!

The pro membership hides all ads, plus gives you double the colors in the color bucket, and more awesome pro features!

[Learn more, Memberships starting at \\$2.50/m!](#)

**Follow me
on Twitter!**

@ConvertingColor