

Converting Colors

YUV(175.1830, -7.4852,
20.8875)

Have a look what the booklet for
YUV(175.1830, -7.4852, 20.8875)
contains.

YUV(175.1830, -7.4852, 20.8875)	3
<i>Conversions</i>	4
<i>Details</i>	6
<i>Harmonies</i>	12
<i>Previews</i>	24
<i>Color Blindness Simulation</i>	28
<i>CSS Examples</i>	31

Color

**YUV(175.1830, -7.4852,
20.8875)**

Conversions

Conversions Part 1

Format	Color
Hex	C7A6A0
RGB	199, 166, 160
RGB Percent	78%, 65%, 63%
CMY	0.2196, 0.3490, 0.3725
CMYK	0.00, 0.17, 0.20, 0.22
HSL	9°, 26%, 70%
HSV	9°, 20%, 78%
XYZ	43.5346, 41.9526, 39.0609
YIQ	175.1830, 21.5940, 5.1300

Conversions

Conversions Part 2

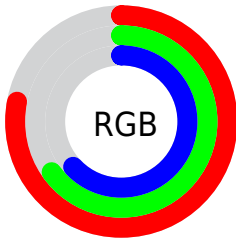
Format	Color
R_{YB}	199, 167, 160
Decimal	13084320
CIE _{Lab}	70.84, 11.12, 7.61
CIE _{LCh}	71, 13.474, 34.395
Yxy	41.9526, 0.3495, 0.3368
Android (android.graphics.Color)	4291274400 (0xFFC7A6A0)
YUV	175.1830, -7.4852, 20.8875
Hunter-Lab	64.7708, 6.6266, 9.5840

Details

The YUV color $175.1830, -7.4852, 20.8875$ is a light color, and the websafe version is hex $CC9999$. A complement of this color would be $183.8170, 7.4852, -20.8875$, and the grayscale version is $175.0000, 0.0000, 0.0000$.

A 20% lighter version of the original color is $230.4820, -7.6326, 21.5023$, and $122.6990, -6.7536, 19.5580$ is the 20% darker color. If you saturate the color by 10%, you get $162.9240, -11.3015, 31.6387$, and if you desaturate by 10%, it is $187.4420, -3.6689, 10.1364$.

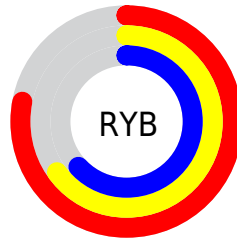
Distribution



Red (78%)

Green (65%)

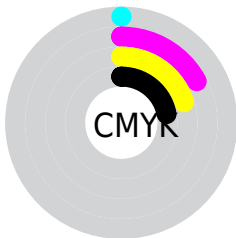
Blue (63%)



Red (78%)

Yellow (65%)

Blue (63%)

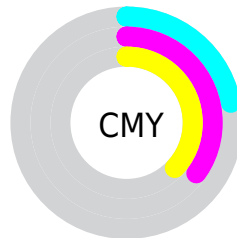


Cyan (0%)

Magenta (17%)

Yellow (20%)

Black (22%)



Cyan (22%)


Magenta (35%)


Yellow (37%)

Brightness & Saturation Gradients

These gradients show how the YUV color 175.1830, -7.4852, 20.8875 changes by changing the brightness by 10 percent. The first figure shows a shift by +10% for each color and the second figure -10%.

Similar to the brightness gradients but the following saturation gradients show a change of the YUV color 175.1830, -7.4852, 20.8875 by changing the saturation by 10% instead.

 175.1830, -7.4852,
20.8875

 175.1830, -7.4852,
20.8875


255.0000, 0.0000,
0.0000


 148.5850, -7.1904,
19.6580


 230.4820, -7.6326,
21.5023


 122.6990, -6.7536,
19.5580

 250.6970, -3.7946,
3.7737

 97.9870, -6.8956,
18.4284

 73.5030, -6.1640,
17.0989

 50.9050, -5.8692,
15.8693

 29.4210, -5.1376,
14.5398

 7.7740, -3.8326,

15.9842

■ 0.0000, 0.0000,
0.0000

■ 175.1830, -7.4852,
20.8875

■ 175.1830, -7.4852,
20.8875

■ 162.9240,
-11.3015, 31.6387

■ 187.4420, -3.6689,
10.1364

■ 150.6650,
-15.1178, 42.3898

■ 199.7010, 0.1474,
-0.6148

■ 138.4060,
-18.9342, 53.1409

■ 211.9600, 3.9637,
-11.3659

■ 126.7340,
-23.0399, 63.3773

■ 223.6320, 8.0694,
-21.6023

■ 114.5890,
-26.4194, 74.0284

■ 235.3210, 9.7017,
-31.8535

■ 102.3300,
-30.2357, 84.7796

■ 238.2560, 8.2548,
-34.4275

■ 90.0710, -34.0520,
95.5307

■ 77.8120, -37.8683,
106.2819

■ 77.6980, -38.3051,
106.3819

Harmonies

Analogous

The Analogous color harmony consists of three colors that are next to each other on the color wheel.



175.9640, -1.9543, 20.2026



175.1830, -7.4852, 20.8875



174.2380, -10.9633, 16.4543

Triad

The Triadic color harmony groups three colors that are evenly spaced from another and form a triangle on the color wheel.



175.1830, -7.4852, 20.8875



170.1740, -4.0298, -14.1846



173.1480, 12.2520, -9.7768

Complementary

The Complementary color scheme is a pair of colors which are on the opposite of each other on the color wheel.



175.1830, -7.4852, 20.8875



183.8170, 7.4852, -20.8875

Split Complementary

Split-complementary colors differ from the complementary color scheme. The scheme consists of three colors, the original color and two neighbors of the complement color.



170.6800, 11.9898, -19.0134



175.1830, -7.4852, 20.8875



169.2530, 2.8333, -22.1469

Square

The Square scheme is like the rectangle color scheme, but the four colors are evenly spaced on the color wheel.



175.1830, -7.4852, 20.8875



171.5730, -9.1565, -3.1335



169.4360, 8.6591, -24.0614



175.1280, 9.3039, 2.5187

Rectangle

The Rectangle color scheme consists of four colors that form a rectangle on the color wheel.



175.1830, -7.4852, 20.8875



173.5640, -12.1101, 10.9064



169.4360, 8.6591, -24.0614



172.1260, 12.2629, -13.2655

Sweetspot

The Sweet Spot groups the original color and five complimentary colors.



175.1830, -7.4852, 20.8875



245.6590, -2.7899, 8.1921



175.4230, 8.6655, 20.6770



122.2780, -1.6161, 5.0182



0.0000, 0.0000, 0.0000



128.0000, 0.0000, 0.0000

Same Dimension

The Same Dimension uses a secret algorithm to generate beautiful new colors.



175.1830, -7.4852, 20.8875



217.5220, -11.5963, 32.8682



186.3360, -12.9836, 11.1063



93.2780, -1.6161, 5.0182



63.4120, -31.2621, 87.3387



13.6990, -6.7536, 19.5580

Inverse Universe

The Inverse Universe completely reimagines the original color for something new.



183.8170, 7.4852, -20.8875



231.4780, 11.5963, -32.8682



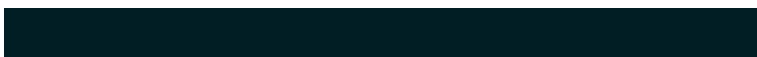
172.6640, 12.9836, -11.1063



95.7220, 1.6161, -5.0182



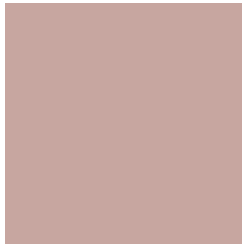
99.5880, 31.2621, -87.3387



21.7140, 7.0430, -19.0432

Previews

White Background



This preview shows how the YUV color 175.1830, -7.4852, 20.8875 looks on a white background.

Color Contrast Check

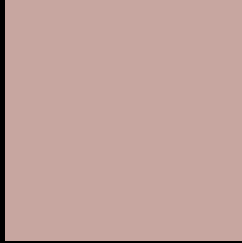
Large Text (above 18pt) WCAG AA × Fail

Any Text WCAG AA × Fail

Large Text (above 18pt) WCAG AAA × Fail

Any Text WCAG AAA × Fail

Black Background



This preview shows how the YUV color 175.1830, -7.4852, 20.8875 looks on a black background.

Color Contrast Check

Large Text (above 18pt) WCAG AA ✓ Pass

Any Text WCAG AA ✓ Pass

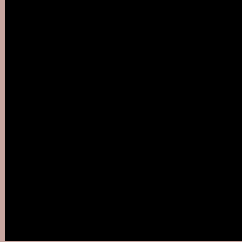
Large Text (above 18pt) WCAG AAA ✓ Pass

Any Text WCAG AAA ✓ Pass

If you want to check with other color combinations, try the [Color Contrast Checker](#).

YUV 175.1830, -7.4852, 20.8875

Background



This preview shows how black text looks on a background with the YUV color 175.1830, -7.4852, 20.8875.



This preview shows how white text looks on a background with the YUV color 175.1830, -7.4852,

Color Blindness Simulation

Color vision deficiency is a very complex topic, and I could not describe the different causes any better than Wikipedia does, so if you want to learn more, you should check out their [article about color blindness](#).

Dichromacy



Original Color

175.1830, -7.4852, 20.8875

Protanopia

173.7680, -4.8156, 4.5885

Deuteranopia

174.5740, -7.1850, 17.9136



Tritanopia

176.4310, -0.2125, 21.5470

Trichromacy



Original Color

175.1830, -7.4852, 20.8875

Protanomaly

173.9860, -5.4161, 10.5363

Deuteranomaly

174.8730, -7.3324, 18.5284

Tritanomaly

176.0350, -2.9753, 21.0173

Monochromacy



Original Color

175.1830, -7.4852, 20.8875

Achromatopsia

175.0000, 0.0000, 0.0000

Achromatomaly

175.3600, -2.6425, 7.5773

CSS Examples

Text

The CSS property to change the color of the text to YUV 175.1830, -7.4852, 20.8875 is called "color". The color property can be set on classes, ids or directly on the HTML element.

This example shows how text in the color `rgb(199, 166, 160)` looks like.

```
.text, #text, p{  
    color:rgb(199, 166, 160)  
}
```

If you want to add a text shadow in that color use the text-shadow property, you can generate a text shadow directly with our [CSS Text Shadow Generator](#).

Here you see how black text with a 4 pixel rgb(199, 166, 160) colored shadow looks like.

```
.shadow{ text-shadow: 4px 4px 2px rgb(199, 166, 160) }
```

Border

The CSS property to change the border of an element to YUV 175.1830, -7.4852, 20.8875 is called "border". The border property can be set on classes, ids or directly on the HTML element.

This example shows the color as border, it can be applied via the CSS property "border" or "border-color".

```
.border, #border, table{ border:4px solid rgb(199, 166, 160) }
```


If only the border color should be changed use the property `border-color`.

```
.border{ border-color:rgb(199, 166, 160) }
```

If you want to add a box shadow in that color use:

Here you see how a box with a 4 pixel `rgb(199, 166, 160)` colored shadow looks like.

```
.boxshadow{ -moz-box-shadow:4px 4px 4px  
4px rgb(199, 166, 160); -webkit-box-  
shadow:4px 4px 4px 4px rgb(199, 166, 160);  
box-shadow:4px 4px 4px 4px rgb(199, 166,  
160) }
```

Background

The CSS property to change the background color of an element to YUV 175.1830, -7.4852, 20.8875 is called "background". The background property can be set on classes, ids or directly on the HTML element.

```
.background, #background, body{  
background: rgb(199, 166, 160) }
```

If only the background color should be changed can be used:

```
.background{ background-color: rgb(199,  
166, 160) }
```

This example shows the color as background, it is applied via the CSS property "background".

To optimize and compress your CSS code, you can use our [online CSS compressor and optimizer](#) based on csstidy. If you want to create a linear or radial gradient as background or border, check our [CSS Gradient Generator](#).

Hey! You found this booklet interesting? Support Converting Colors with the new Membership Option!

The pro membership hides all ads, plus gives you double the colors in the color bucket, and more awesome pro features!

[Learn more, Memberships starting at \\$2.50/m!](#)

**Follow me
on Twitter!**

@ConvertingColor