

Converting Colors

YUV(175.3520, -7.0755,
29.5093)

Have a look what the booklet for
YUV(175.3520, -7.0755, 29.5093)
contains.

YUV(175.3520, -7.0755, 29.5093)	3
<i>Conversions</i>	4
<i>Details</i>	6
<i>Harmonies</i>	12
<i>Previews</i>	24
<i>Color Blindness Simulation</i>	28
<i>CSS Examples</i>	31

Color

**YUV(175.3520, -7.0755,
29.5093)**

Conversions

Conversions Part 1

Format	Color
Hex	D1A1A1
RGB	209, 161, 161
RGB Percent	82%, 63%, 63%
CMY	0.1804, 0.3686, 0.3686
CMYK	0.00, 0.23, 0.23, 0.18
HSL	0°, 34%, 73%
HSV	0°, 23%, 82%
XYZ	45.4724, 41.6183, 39.3547
YIQ	175.3520, 28.6080, 10.1760

Conversions

Conversions Part 2

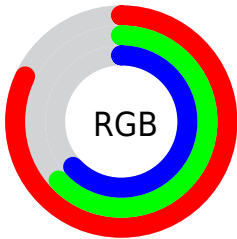
Format	Color
R _Y B	209, 161, 161
Decimal	13738401
CIE Lab	70.61, 17.75, 6.86
CIE LCh	71, 19.029, 21.121
Yxy	41.6183, 0.3596, 0.3291
Android (android.graphics.Color)	4291928481 (0xFFD1A1A1)
YUV	175.3520, -7.0755, 29.5093
Hunter-Lab	64.5122, 12.9220, 8.9896

Details

The YUV color $175.3520, -7.0755, 29.5093$ is a light color, and the websafe version is hex $CC9999$. A complement of this color would be $194.6480, 7.0755, -29.5093$, and the grayscale version is $175.0000, 0.0000, 0.0000$.

A 20% lighter version of the original color is $227.6610, -5.7489, 23.9763$, and $122.5690, -6.1965, 27.5650$ is the 20% darker color. If you saturate the color by 10%, you get $160.6310, -10.1711, 42.4196$, and if you desaturate by 10%, it is $190.0730, -3.9800, 16.5990$.

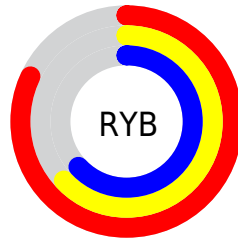
Distribution



Red (82%)

Green (63%)

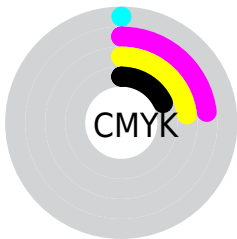
Blue (63%)



Red (82%)

Yellow (63%)

Blue (63%)

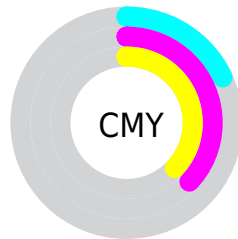


Cyan (0%)

Magenta (23%)

Yellow (23%)

Black (18%)



Cyan (18%)

Magenta (37%)

Yellow (37%)

Brightness & Saturation Gradients

These gradients show how the YUV color 175.3520, -7.0755, 29.5093 changes by changing the brightness by 10 percent. The first figure shows a shift by +10% for each color and the second figure -10%.


Similar to the brightness gradients but the following saturation gradients show a change of the YUV color 175.3520, -7.0755, 29.5093 by changing the saturation by 10% instead.

 175.3520, -7.0755,
29.5093


 175.3520, -7.0755,
29.5093


255.0000, 0.0000,
0.0000


 148.7540, -6.7807,
28.2797


 227.6610, -5.7489,
23.9763


 122.5690, -6.1965,
27.5650

 247.2890, -1.6215,
6.7625

 97.5580, -6.1911,
25.8206

 73.0740, -5.4595,
24.4911

 50.1770, -5.0173,
22.6468

 28.3940, -4.1382,
20.7025

 9.8670, -4.8644,

20.2876

0.0000, 0.0000,
0.0000

175.3520, -7.0755,
29.5093

175.3520, -7.0755,
29.5093

160.6310,
-10.1711, 42.4196

190.0730, -3.9800,
16.5990

145.9100,
-13.2666, 55.3299

204.7940, -0.8844,
3.6887

131.1890,
-16.3622, 68.2402

219.5150, 2.2111,
-9.2217

116.4680,
-19.4577, 81.1506

234.2360, 5.3067,
-22.1320

102.4480,
-22.4059, 93.4461

241.2460, 6.7807,
-28.2797

■ 87.7270, -25.5014,
106.3564

■ 73.0060, -28.5970,
119.2667

■ 62.4910, -30.8081,
128.4884

Harmonies

Analogous

The Analogous color harmony consists of three colors that are next to each other on the color wheel.



175.9090, 1.5239, 24.6358



175.3520, -7.0755, 29.5093



173.9080, -13.7586, 26.3907

Triad

The Triadic color harmony groups three colors that are evenly spaced from another and form a triangle on the color wheel.



175.3520, -7.0755, 29.5093



168.6210, -8.6872, -13.6996



170.7490, 17.3787, -20.8279

Complementary

The Complementary color scheme is a pair of colors which are on the opposite of each other on the color wheel.



175.3520, -7.0755, 29.5093



194.6480, 7.0755, -29.5093

Split Complementary

Split-complementary colors differ from the complementary color scheme. The scheme consists of three colors, the original color and two neighbors of the complement color.



167.2160, 15.6695, -32.6384



175.3520, -7.0755, 29.5093



166.5360, 0.2288, -26.7801

Square

The Square scheme is like the rectangle color scheme, but the four colors are evenly spaced on the color wheel.



175.3520, -7.0755, 29.5093



170.4120, -14.9931, 2.2697



166.0710, 8.8390, -35.1423



173.6910, 15.4353, -4.1140

Rectangle

The Rectangle color scheme consists of four colors that form a rectangle on the color wheel.



175.3520, -7.0755, 29.5093



173.1800, -16.3577, 20.0131



166.0710, 8.8390, -35.1423



169.7160, 17.3950, -26.0609

Sweetspot

The Sweet Spot groups the original color and five complimentary colors.



175.3520, -7.0755, 29.5093



242.3820, -2.6533, 11.0660



180.8240, 13.8908, 24.7104



120.2890, -1.6215, 6.7625



0.0000, 0.0000, 0.0000



128.0000, 0.0000, 0.0000

Same Dimension

The Same Dimension uses a secret algorithm to generate beautiful new colors.



175.3520, -7.0755, 29.5093



205.2290, -10.4659, 43.6492



189.4400, -14.0209, 17.1541



97.2890, -1.6215, 6.7625



50.2320, -24.7644, 103.2825



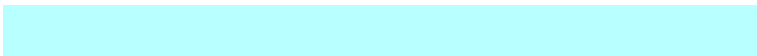
12.2590, -6.0437, 25.2059

Inverse Universe

The Inverse Universe completely reimagines the original color for something new.



194.6480, 7.0755, -29.5093



233.7710, 10.4659, -43.6492



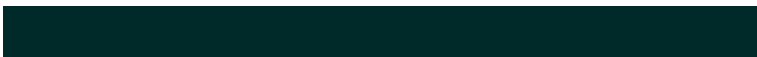
180.5600, 14.0209, -17.1541



101.7110, 1.6215, -6.7625



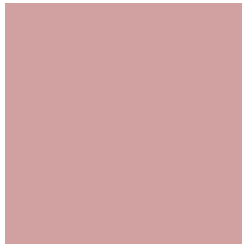
117.7680, 24.7644, -103.2825



28.7410, 6.0437, -25.2059

Previews

White Background



This preview shows how the YUV color 175.3520, -7.0755, 29.5093 looks on a white background.

Color Contrast Check

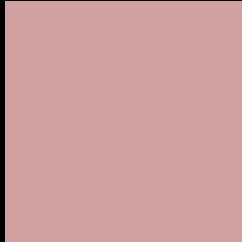
Large Text (above 18pt) WCAG AA × Fail

Any Text WCAG AA × Fail

Large Text (above 18pt) WCAG AAA × Fail

Any Text WCAG AAA × Fail

Black Background



This preview shows how the YUV color 175.3520, -7.0755, 29.5093 looks on a black background.

Color Contrast Check

Large Text (above 18pt) WCAG AA ✓ Pass

Any Text WCAG AA ✓ Pass

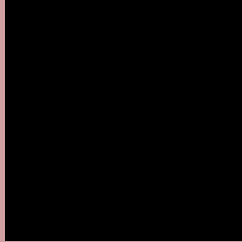
Large Text (above 18pt) WCAG AAA ✓ Pass

Any Text WCAG AAA ✓ Pass

If you want to check with other color combinations, try the [Color Contrast Checker](#).

YUV 175.3520, -7.0755, 29.5093

Background



This preview shows how black text looks on a background with the YUV color 175.3520, -7.0755, 29.5093.



This preview shows how white text looks on a background with the YUV color 175.3520, -7.0755,

Color Blindness Simulation

Color vision deficiency is a very complex topic, and I could not describe the different causes any better than Wikipedia does, so if you want to learn more, you should check out their [article about color blindness](#).

Dichromacy



Original Color

175.3520, -7.0755, 29.5093

Protanopia

172.9250, -2.9210, 3.5738

Deuteranopia

174.5740, -7.1850, 17.9136



Tritanopia

175.7310, -1.8394, 30.0539

Trichromacy



Original Color

175.3520, -7.0755, 29.5093

Protanomaly

173.9370, -4.4059, 13.2103

Deuteranomaly

174.8950, -7.3432, 22.0171

Tritanomaly

175.8620, -3.8760, 29.9390

Monochromacy



Original Color

175.3520, -7.0755, 29.5093

Achromatopsia

175.0000, 0.0000, 0.0000

Achromatomaly

175.0830, -2.5059, 10.4512

CSS Examples

Text

The CSS property to change the color of the text to YUV 175.3520, -7.0755, 29.5093 is called "color". The color property can be set on classes, ids or directly on the HTML element.

This example shows how text in the color `rgb(209, 161, 161)` looks like.

```
.text, #text, p{  
    color:rgb(209, 161, 161)  
}
```

If you want to add a text shadow in that color use the text-shadow property, you can generate a text shadow directly with our [CSS Text Shadow Generator](#).

Here you see how black text with a 4 pixel rgb(209, 161, 161) colored shadow looks like.

```
.shadow{ text-shadow: 4px 4px 2px rgb(209, 161, 161) }
```

Border

The CSS property to change the border of an element to YUV 175.3520, -7.0755, 29.5093 is called "border". The border property can be set on classes, ids or directly on the HTML element.

This example shows the color as border, it can be applied via the CSS property "border" or "border-color".

```
.border, #border, table{ border:4px solid rgb(209, 161, 161) }
```


If only the border color should be changed use the property `border-color`.

```
.border{ border-color:rgb(209, 161, 161) }
```

If you want to add a box shadow in that color use:

Here you see how a box with a 4 pixel `rgb(209, 161, 161)` colored shadow looks like.

```
.boxshadow{ -moz-box-shadow:4px 4px 4px  
4px rgb(209, 161, 161); -webkit-box-  
shadow:4px 4px 4px 4px rgb(209, 161, 161);  
box-shadow:4px 4px 4px 4px rgb(209, 161,  
161) }
```

Background

The CSS property to change the background color of an element to YUV 175.3520, -7.0755, 29.5093 is called "background". The background property can be set on classes, ids or directly on the HTML element.

```
.background, #background, body{  
background: rgb(209, 161, 161) }
```

If only the background color should be changed can be used:

```
.background{ background-color: rgb(209,  
161, 161) }
```

This example shows the color as background, it is applied via the CSS property "background".

To optimize and compress your CSS code, you can use our [online CSS compressor and optimizer](#) based on csstidy. If you want to create a linear or radial gradient as background or border, check our [CSS Gradient Generator](#).

Hey! You found this booklet interesting? Support Converting Colors with the new Membership Option!

The pro membership hides all ads, plus gives you double the colors in the color bucket, and more awesome pro features!

[Learn more, Memberships starting at \\$2.50/m!](#)

**Follow me
on Twitter!**

@ConvertingColor