

Converting Colors

YUV(175.5850, -7.1904,
19.6580)

Have a look what the booklet for
YUV(175.5850, -7.1904, 19.6580)
contains.

| | |
|--|----|
| YUV(175.5850, -7.1904, 19.6580) | 3 |
| <i>Conversions</i> | 4 |
| <i>Details</i> | 6 |
| <i>Harmonies</i> | 12 |
| <i>Previews</i> | 24 |
| <i>Color Blindness Simulation</i> | 28 |
| <i>CSS Examples</i> | 31 |

Color

**YUV(175.5850, -7.1904,
19.6580)**

Conversions

Conversions Part 1

| Format | Color |
|---------------|---------------------------|
| Hex | C6A7A1 |
| RGB | 198, 167, 161 |
| RGB Percent | 78%, 65%, 63% |
| CMY | 0.2235, 0.3451, 0.3686 |
| CMYK | 0.00, 0.16, 0.19, 0.22 |
| HSL | 10°, 25%, 70% |
| HSV | 10°, 19%, 78% |
| XYZ | 43.5404, 42.2164, 39.5720 |
| YIQ | 175.5850, 20.4020, 4.7060 |

Conversions

Conversions Part 2

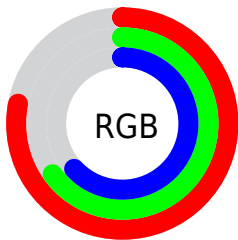
| Format | Color |
|-------------------------------------|-------------------------------|
| R_{YB} | 198, 168, 161 |
| Decimal | 13019041 |
| CIE _{Lab} | 71.02, 10.35, 7.31 |
| CIE _{LCh} | 71, 12.672, 35.216 |
| Yxy | 42.2164, 0.3474, 0.3368 |
| Android (android.graphics.Color) | 4291209121 (0xFFC6A7A1) |
| YUV | 175.5850, -7.1904, 19.6580 |
| Hunter-Lab | 64.9742, 5.9115, 9.3718 |

Details

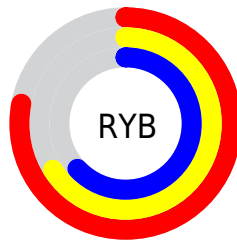
The YUV color $175.5850, -7.1904, 19.6580$ is a light color, and the websafe version is hex $CC9999$. A complement of this color would be $183.4150, 7.1904, -19.6580$, and the grayscale version is $176.0000, 0.0000, 0.0000$.

A 20% lighter version of the original color is $231.1830, -7.4852, 20.8875$, and $123.1010, -6.4588, 18.3284$ is the 20% darker color. If you saturate the color by 10%, you get $163.3260, -11.0067, 30.4091$, and if you desaturate by 10%, it is $187.8440, -3.3741, 8.9068$.

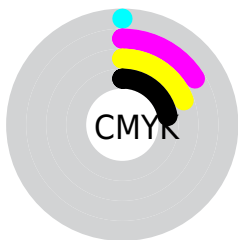
Distribution



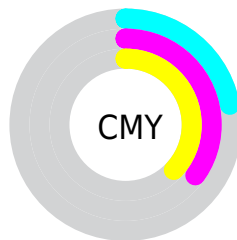
- Red (78%)
- Green (65%)
- Blue (63%)



- Red (78%)
- Yellow (66%)
- Blue (63%)



- Cyan (0%)
- Magenta (16%)
- Yellow (19%)
- Black (22%)




- Cyan (22%)
- Magenta (35%)
- Yellow (37%)

Brightness & Saturation Gradients

These gradients show how the YUV color 175.5850, -7.1904, 19.6580 changes by changing the brightness by 10 percent. The first figure shows a shift by +10% for each color and the second figure -10%.


Similar to the brightness gradients but the following saturation gradients show a change of the YUV color 175.5850, -7.1904, 19.6580 by changing the saturation by 10% instead.


 175.5850, -7.1904,
19.6580


 175.5850, -7.1904,
19.6580


255.0000, 0.0000,
0.0000


 148.9870, -6.8956,
18.4284


 231.1830, -7.4852,
20.8875


 123.1010, -6.4588,
18.3284

 251.3980, -3.6472,
3.1590

 97.8020, -6.3114,
17.7136

 74.2040, -6.0166,
16.4841

 51.6060, -5.7218,
15.2545

 29.8230, -4.8427,
13.3102

 7.4750, -3.6852,

15.3694

■ 0.0000, 0.0000,
0.0000

■ 175.5850, -7.1904,
19.6580

■ 175.5850, -7.1904,
19.6580

■ 163.3260,
-11.0067, 30.4091

■ 187.8440, -3.3741,
8.9068

■ 151.6540,
-15.1124, 40.6454

■ 199.5160, 0.7316,
-1.3295

■ 139.5090,
-18.4919, 51.2966

■ 211.6610, 4.1111,
-11.9807

■ 127.8370,
-22.5976, 61.5330

■ 223.3330, 8.2168,
-22.2170

■ 115.5780,
-26.4140, 72.2841

■ 235.0220, 9.8492,
-32.4683

■ 103.3190,
-30.2303, 83.0352

■ 237.9570, 8.4022,
-35.0423

■ 91.6470, -34.3360,
93.2716

■ 79.5020, -37.7155,
103.9227

■ 77.9860, -38.4471,
105.2523

Harmonies

Analogous

The Analogous color harmony consists of three colors that are next to each other on the color wheel.



176.2520, -2.0962, 19.0730



175.5850, -7.1904, 19.6580



174.6400, -10.6685, 15.2247

Triad

The Triadic color harmony groups three colors that are evenly spaced from another and form a triangle on the color wheel.



175.5850, -7.1904, 19.6580



170.7010, -3.3036, -13.7698



173.6320, 11.5204, -8.4473

Complementary

The Complementary color scheme is a pair of colors which are on the opposite of each other on the color wheel.



175.5850, -7.1904, 19.6580



183.4150, 7.1904, -19.6580

Split Complementary

Split-complementary colors differ from the complementary color scheme. The scheme consists of three colors, the original color and two neighbors of the complement color.



171.7510, 10.9688, -18.1986



175.5850, -7.1904, 19.6580



170.1500, 2.3911, -20.3025

Square

The Square scheme is like the rectangle color scheme, but the four colors are evenly spaced on the color wheel.



175.5850, -7.1904, 19.6580



171.8010, -8.2829, -3.3335



170.3330, 8.2168, -22.2170



175.3130, 8.7197, 3.2335

Rectangle

The Rectangle color scheme consists of four colors that form a rectangle on the color wheel.



175.5850, -7.1904, 19.6580



173.4930, -11.0890, 10.0916



170.3330, 8.2168, -22.2170



172.7240, 11.9681, -12.0359

Sweetspot

The Sweet Spot groups the original color and five complimentary colors.



175.5850, -7.1904, 19.6580



245.6590, -2.7899, 8.1921



175.5970, 8.0867, 19.6474



122.2780, -1.6161, 5.0182



0.0000, 0.0000, 0.0000



128.0000, 0.0000, 0.0000

Same Dimension

The Same Dimension uses a secret algorithm to generate beautiful new colors.



175.5850, -7.1904, 19.6580



221.0270, -10.8593, 29.7943



186.1510, -12.3994, 10.3916



93.2780, -1.6161, 5.0182



63.9990, -31.5515, 86.8239



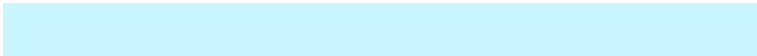
14.2860, -7.0430, 19.0432

Inverse Universe

The Inverse Universe completely reimagines the original color for something new.



183.4150, 7.1904, -19.6580



232.9730, 10.8593, -29.7943



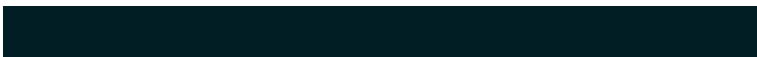
172.8490, 12.3994, -10.3916



95.7220, 1.6161, -5.0182



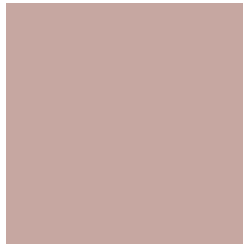
99.0010, 31.5515, -86.8239



21.7140, 7.0430, -19.0432

Previews

White Background



This preview shows how the YUV color 175.5850, -7.1904, 19.6580 looks on a white background.

Color Contrast Check

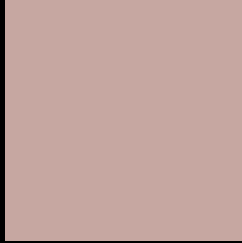
Large Text (above 18pt) WCAG AA × Fail

Any Text WCAG AA × Fail

Large Text (above 18pt) WCAG AAA × Fail

Any Text WCAG AAA × Fail

Black Background



This preview shows how the YUV color 175.5850, -7.1904, 19.6580 looks on a black background.

Color Contrast Check

Large Text (above 18pt) WCAG AA ✓ Pass

Any Text WCAG AA ✓ Pass

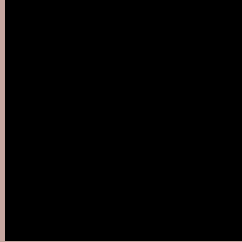
Large Text (above 18pt) WCAG AAA ✓ Pass

Any Text WCAG AAA ✓ Pass

If you want to check with other color combinations, try the [Color Contrast Checker](#).

YUV 175.5850, -7.1904, 19.6580

Background



This preview shows how black text looks on a background with the YUV color 175.5850, -7.1904, 19.6580.



This preview shows how white text looks on a background with the YUV color 175.5850, -7.1904,

19.6580.

Color Blindness Simulation

Color vision deficiency is a very complex topic, and I could not describe the different causes any better than Wikipedia does, so if you want to learn more, you should check out their [article about color blindness](#).

Dichromacy



Original Color

175.5850, -7.1904, 19.6580

Protanopia

173.7680, -4.8156, 4.5885

Deuteranopia

175.5740, -7.1850, 17.9136



Tritanopia

176.8330, 0.0823, 20.3175

Trichromacy



Original Color

175.5850, -7.1904, 19.6580

Protanomaly

174.5730, -5.7055, 10.0215

Deuteranomaly

175.8730, -7.3324, 18.5284

Tritanomaly

176.4370, -2.6804, 19.7878

Monochromacy



Original Color

175.5850, -7.1904, 19.6580

Achromatopsia

176.0000, 0.0000, 0.0000

Achromatomaly

176.0610, -2.4951, 6.9625

CSS Examples

Text

The CSS property to change the color of the text to YUV 175.5850, -7.1904, 19.6580 is called "color". The color property can be set on classes, ids or directly on the HTML element.

This example shows how text in the color `rgb(198, 167, 161)` looks like.

```
.text, #text, p{  
    color:rgb(198, 167, 161)  
}
```

If you want to add a text shadow in that color use the text-shadow property, you can generate a text shadow directly with our [CSS Text Shadow Generator](#).

Here you see how black text with a 4 pixel rgb(198, 167, 161) colored shadow looks like.

```
.shadow{ text-shadow: 4px 4px 2px rgb(198, 167, 161) }
```

Border

The CSS property to change the border of an element to YUV 175.5850, -7.1904, 19.6580 is called "border". The border property can be set on classes, ids or directly on the HTML element.

This example shows the color as border, it can be applied via the CSS property "border" or "border-color".

```
.border, #border, table{ border:4px solid rgb(198, 167, 161) }
```


If only the border color should be changed use the property `border-color`.

```
.border{ border-color:rgb(198, 167, 161) }
```

If you want to add a box shadow in that color use:

Here you see how a box with a 4 pixel `rgb(198, 167, 161)` colored shadow looks like.

```
.boxshadow{ -moz-box-shadow:4px 4px 4px  
4px rgb(198, 167, 161); -webkit-box-  
shadow:4px 4px 4px 4px rgb(198, 167, 161);  
box-shadow:4px 4px 4px 4px rgb(198, 167,  
161) }
```

Background

The CSS property to change the background color of an element to YUV 175.5850, -7.1904, 19.6580 is called "background". The background property can be set on classes, ids or directly on the HTML element.

```
.background, #background, body{  
background: rgb(198, 167, 161) }
```

If only the background color should be changed can be used:

```
.background{ background-color: rgb(198,  
167, 161) }
```

This example shows the color as background, it is applied via the CSS property "background".

To optimize and compress your CSS code, you can use our [online CSS compressor and optimizer](#) based on csstidy. If you want to create a linear or radial gradient as background or border, check our [CSS Gradient Generator](#).

Hey! You found this booklet interesting? Support Converting Colors with the new Membership Option!

The pro membership hides all ads, plus gives you double the colors in the color bucket, and more awesome pro features!

[Learn more, Memberships starting at \\$2.50/m!](#)

**Follow me
on Twitter!**

@ConvertingColor