

Converting Colors

YUV(175.6290, -23.9741,
36.2824)

Have a look what the booklet for
YUV(175.6290, -23.9741, 36.2824)
contains.

YUV(175.6290, -23.9741, 36.2824)	3
<i>Conversions</i>	4
<i>Details</i>	6
<i>Harmonies</i>	12
<i>Previews</i>	24
<i>Color Blindness Simulation</i>	28
<i>CSS Examples</i>	31

Color

**YUV(175.6290, -23.9741,
36.2824)**

Conversions

Conversions Part 1

Format	Color
Hex	D9A47F
RGB	217, 164, 127
RGB Percent	85%, 64%, 50%
CMY	0.1490, 0.3569, 0.5020
CMYK	0.00, 0.24, 0.41, 0.15
HSL	25°, 54%, 67%
HSV	25°, 41%, 85%
XYZ	45.7215, 42.8349, 25.9369
YIQ	175.6290, 43.4650, -0.2710

Conversions

Conversions Part 2

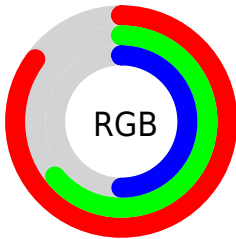
Format	Color
R_{YB}	217, 190, 127
Decimal	14263423
CIE _{Lab}	71.44, 14.86, 26.78
CIE _{LCh}	71, 30.631, 60.977
Yxy	42.8349, 0.3993, 0.3741
Android (android.graphics.Color)	4292453503 (0xFFD9A47F)
YUV	175.6290, -23.9741, 36.2824
Hunter-Lab	65.4484, 10.1633, 22.3176

Details

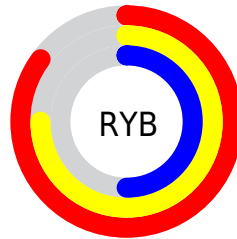
The YUV color $175.6290, -23.9741, 36.2824$ is a light color, and the websafe version is hex $CC9966$. A complement of this color would be $168.3710, 23.9741, -36.2824$, and the grayscale version is $176.0000, 0.0000, 0.0000$.

A 20% lighter version of the original color is $225.3180, -22.3418, 26.0311$, and $122.3620, -22.3635, 33.0085$ is the 20% darker color. If you saturate the color by 10%, you get $165.4900, -29.8216, 45.1743$, and if you desaturate by 10%, it is $185.7680, -18.1266, 27.3905$.

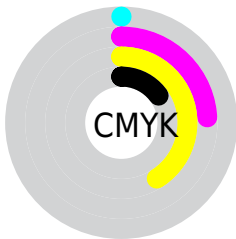
Distribution



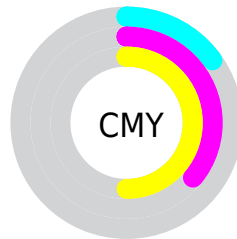
- Red (85%)
- Green (64%)
- Blue (50%)



- Red (85%)
- Yellow (75%)
- Blue (50%)



- Cyan (0%)
- Magenta (24%)
- Yellow (41%)
- Black (15%)



- Cyan (15%)
- Magenta (36%)
- Yellow (50%)

Brightness & Saturation Gradients

These gradients show how the YUV color 175.6290, -23.9741, 36.2824 changes by changing the brightness by 10 percent. The first figure shows a shift by +10% for each color and the second figure -10%.

Similar to the brightness gradients but the following saturation gradients show a change of the YUV color 175.6290, -23.9741, 36.2824 by changing the saturation by 10% instead.

■ 175.6290,
-23.9741, 36.2824

■ 175.6290,
-23.9741, 36.2824

255.0000, 0.0000,
0.0000

■ 148.8460,
-23.0951, 34.3381

■ 225.3180,
-22.3418, 26.0311

■ 122.3620,
-22.3635, 33.0085

■ 245.5330,
-18.5038, 8.3026

■ 97.5790, -21.4844,
31.0642

■ 252.8340, -8.2992,
1.8996

■ 72.9100, -20.1686,
29.0199

■ 49.7140, -19.5790,
26.5608

■ 28.7720, -14.1846,
23.0020

■ 9.5680, -4.7170,

19.6729

■ 0.0000, 0.0000,
0.0000

■ 175.6290,
-23.9741, 36.2824

■ 175.6290,
-23.9741, 36.2824

■ 165.4900,
-29.8216, 45.1743

■ 185.7680,
-18.1266, 27.3905

■ 155.4650,
-35.2322, 53.9662

■ 195.7930,
-12.7159, 18.5985

■ 145.9130,
-41.3691, 62.3433

■ 205.3450, -6.5791,
10.2214

■ 135.7740,
-47.2166, 71.2352

■ 215.4840, -0.7316,
1.3295

■ 125.7490,
-52.6273, 80.0271

■ 225.5090, 4.6791,
-7.4624

■ 117.1260,
-57.7431, 87.5895

■ 235.4200, 9.6529,
-16.1543

■ 242.4640, 6.1802,
-22.3319

■ 243.6380, 5.6015,
-23.3615

Harmonies

Analogous

The Analogous color harmony consists of three colors that are next to each other on the color wheel.



177.2140, -14.4025, 46.2933



175.6290, -23.9741, 36.2824



173.1230, -26.6826, 18.3091

Triad

The Triadic color harmony groups three colors that are evenly spaced from another and form a triangle on the color wheel.



175.6290, -23.9741, 36.2824



161.6790, 6.5673, -53.2155



177.2710, 22.5444, 2.3933

Complementary

The Complementary color scheme is a pair of colors which are on the opposite of each other on the color wheel.



175.6290, -23.9741, 36.2824



168.3710, 23.9741, -36.2824

Split Complementary

Split-complementary colors differ from the complementary color scheme. The scheme consists of three colors, the original color and two neighbors of the complement color.



171.9790, 28.6044, -28.0456



175.6290, -23.9741, 36.2824



160.0870, 21.1561, -65.8513

Square

The Square scheme is like the rectangle color scheme, but the four colors are evenly spaced on the color wheel.



175.6290, -23.9741, 36.2824



166.2830, -9.5065, -30.9432



164.2160, 28.9805, -55.4404



179.5640, 11.5539, 27.5694

Rectangle

The Rectangle color scheme consists of four colors that form a rectangle on the color wheel.



175.6290, -23.9741, 36.2824



171.0070, -24.1605, 2.6249



164.2160, 28.9805, -55.4404



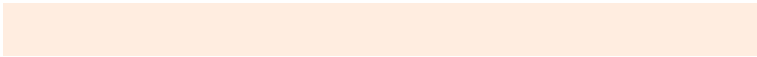
176.1880, 25.0503, -8.0579

Sweetspot

The Sweet Spot groups the original color and five complimentary colors.



175.6290, -23.9741, 36.2824



240.9000, -8.3317, 12.3657



160.0660, 10.3205, 49.9311



119.4910, -4.6791, 7.4624



0.0000, 0.0000, 0.0000



128.0000, 0.0000, 0.0000

Same Dimension

The Same Dimension uses a secret algorithm to generate beautiful new colors.



175.6290, -23.9741, 36.2824



196.4970, -33.7690, 51.3071



201.4570, -36.7073, 13.6312



104.6370, -2.7790, 4.7034



93.4040, -46.0482, 69.8057



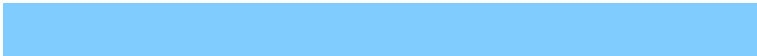
24.9070, -12.2792, 18.4986

Inverse Universe

The Inverse Universe completely reimagines the original color for something new.



168.3710, 23.9741, -36.2824



186.5030, 33.7690, -51.3071



142.5430, 36.7073, -13.6312



103.7760, 3.0684, -4.1886



79.5960, 46.0482, -69.8057



21.0930, 12.2792, -18.4986

Previews

White Background



This preview shows how the YUV color 175.6290, -23.9741, 36.2824 looks on a white background.

Color Contrast Check

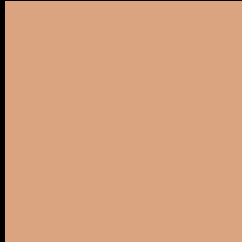
Large Text (above 18pt) WCAG AA × Fail

Any Text WCAG AA × Fail

Large Text (above 18pt) WCAG AAA × Fail

Any Text WCAG AAA × Fail

Black Background



This preview shows how the YUV color 175.6290, -23.9741, 36.2824 looks on a black background.

Color Contrast Check

Large Text (above 18pt) WCAG AA ✓ Pass

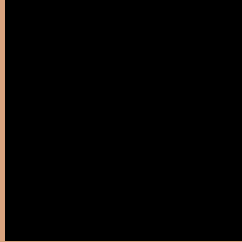
Any Text WCAG AA ✓ Pass

Large Text (above 18pt) WCAG AAA ✓ Pass

Any Text WCAG AAA ✓ Pass

If you want to check with other color combinations, try the [Color Contrast Checker](#).

YUV 175.6290, -23.9741, 36.2824 Background



This preview shows how black text looks on a background with the YUV color 175.6290, -23.9741, 36.2824.



This preview shows how white text looks on a background with the YUV color 175.6290, -23.9741,

Color Blindness Simulation

Color vision deficiency is a very complex topic, and I could not describe the different causes any better than Wikipedia does, so if you want to learn more, you should check out their [article about color blindness](#).

Dichromacy



Original Color

175.6290, -23.9741, 36.2824

Protanopia

173.9850, -20.6986, 12.2912

Deuteranopia

175.1720, -24.2418, 28.7902



Tritanopia

178.2050, -4.0451, 37.5312

Trichromacy



Original Color

175.6290, -23.9741, 36.2824

Protanomaly

174.6980, -22.0361, 21.3129

Deuteranomaly

175.4820, -24.3946, 31.1493

Tritanomaly

177.2560, -11.4652, 37.4865

Monochromacy



Original Color

175.6290, -23.9741, 36.2824

Achromatopsia

176.0000, 0.0000, 0.0000

Achromatomaly

176.0850, -8.9159, 13.0805

CSS Examples

Text

The CSS property to change the color of the text to YUV 175.6290, -23.9741, 36.2824 is called "color". The color property can be set on classes, ids or directly on the HTML element.

This example shows how text in the color `rgb(217, 164, 127)` looks like.

```
.text, #text, p{  
    color:rgb(217, 164, 127)  
}
```

If you want to add a text shadow in that color use the text-shadow property, you can generate a text shadow directly with our [CSS Text Shadow Generator](#).

Here you see how black text with a 4 pixel rgb(217, 164, 127) colored shadow looks like.

```
.shadow{ text-shadow: 4px 4px 2px rgb(217, 164, 127) }
```

Border

The CSS property to change the border of an element to YUV 175.6290, -23.9741, 36.2824 is called "border".

The border property can be set on classes, ids or directly on the HTML element.

This example shows the color as border, it can be applied via the CSS property "border" or "border-color".

```
.border, #border, table{ border:4px solid rgb(217, 164, 127) }
```


If only the border color should be changed use the property border-color.

```
.border{ border-color:rgb(217, 164, 127) }
```

If you want to add a box shadow in that color use:

Here you see how a box with a 4 pixel rgb(217, 164, 127) colored shadow looks like.

```
.boxshadow{ -moz-box-shadow:4px 4px 4px  
4px rgb(217, 164, 127); -webkit-box-  
shadow:4px 4px 4px 4px rgb(217, 164, 127);  
box-shadow:4px 4px 4px 4px rgb(217, 164,  
127) }
```

Background

The CSS property to change the background color of an element to YUV 175.6290, -23.9741, 36.2824 is called "background". The background property can be set on classes, ids or directly on the HTML element.

```
.background, #background, body{  
background: rgb(217, 164, 127) }
```

If only the background color should be changed can be used:

```
.background{ background-color: rgb(217,  
164, 127) }
```

This example shows the color as background, it is applied via the CSS property "background".

To optimize and compress your CSS code, you can use our [online CSS compressor and optimizer](#) based on csstidy. If you want to create a linear or radial gradient as background or border, check our [CSS Gradient Generator](#).

Hey! You found this booklet interesting? Support Converting Colors with the new Membership Option!

The pro membership hides all ads, plus gives you double the colors in the color bucket, and more awesome pro features!

[Learn more, Memberships starting at \\$2.50/m!](#)

**Follow me
on Twitter!**

@ConvertingColor