

Converting Colors

YUV(175.9410, -0.4639, 8.8217)

Have a look what the booklet for
YUV(175.9410, -0.4639, 8.8217)
contains.

YUV(175.9410, -0.4639, 8.8217)	3
<i>Conversions</i>	4
<i>Details</i>	6
<i>Harmonies</i>	12
<i>Previews</i>	24
<i>Color Blindness Simulation</i>	28
<i>CSS Examples</i>	31

Color

**YUV(175.9410, -0.4639,
8.8217)**

Conversions

Conversions Part 1

Format	Color
Hex	BAABAF
RGB	186, 171, 175
RGB Percent	73%, 67%, 69%
CMY	0.2706, 0.3294, 0.3137
CMYK	0.00, 0.08, 0.06, 0.27
HSL	344°, 10%, 70%
HSV	344°, 8%, 73%
XYZ	42.5505, 42.6601, 46.5490
YIQ	175.9410, 7.6560, 4.4240

Conversions

Conversions Part 2

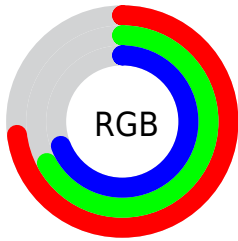
Format	Color
RYB	186, 171, 175
Decimal	12233647
CIELab	71.32, 6.10, -0.11
CIELCh	71, 6.101, 358.992
Yxy	42.6601, 0.3229, 0.3238
Android (android.graphics.Color)	4290423727 (0xFFBAABAF)
YUV	175.9410, -0.4639, 8.8217
Hunter-Lab	65.3147, 1.9865, 3.4650

Details

The YUV color $175.9410, -0.4639, 8.8217$ is a light color, and the websafe version is hex 999999 . A complement of this color would be $181.0590, 0.4639, -8.8217$, and the grayscale version is $176.0000, 0.0000, 0.0000$.

A 20% lighter version of the original color is $231.2400, -0.6113, 9.4365$, and $123.6420, -0.3165, 8.2070$ is the 20% darker color. If you saturate the color by 10%, you get $163.1920, -1.0807, 20.0026$, and if you desaturate by 10%, it is $188.6900, 0.1528, -2.3591$.

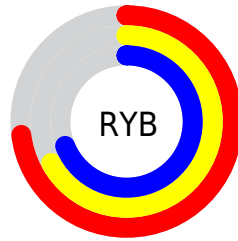
Distribution



Red (73%)

Green (67%)

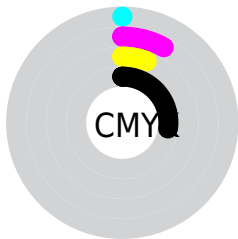
Blue (69%)



Red (73%)

Yellow (67%)

Blue (69%)

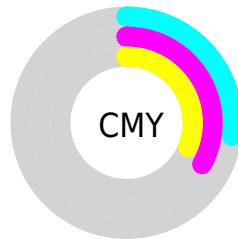


Cyan (0%)

Magenta (8%)

Yellow (6%)

Black (27%)



Cyan (27%)

Magenta (33%)

Yellow (31%)

Brightness & Saturation Gradients

These gradients show how the YUV color 175.9410, -0.4639, 8.8217 changes by changing the brightness by 10 percent. The first figure shows a shift by +10% for each color and the second figure -10%.

Similar to the brightness gradients but the following saturation gradients show a change of the YUV color 175.9410, -0.4639, 8.8217 by changing the saturation by 10% instead.

■ 175.9410, -0.4639,
8.8217

■ 175.9410, -0.4639,
8.8217

255.0000, 0.0000,
0.0000

■ 148.9410, -0.4639,
8.8217

■ 231.2400, -0.6113,
9.4365

■ 123.6420, -0.3165,
8.2070

■ 98.6420, -0.3165,
8.2070

■ 74.9300, -0.4585,
7.0774

■ 51.9300, -0.4585,
7.0774

■ 30.6310, -0.3111,
6.4626

■ 5.9520, -0.4693,

10.5661

0.0000, 0.0000,
0.0000

175.9410, -0.4639,
8.8217

175.9410, -0.4639,
8.8217

163.1920, -1.0807,
20.0026

188.6900, 0.1528,
-2.3591

151.1440, -1.5500,
30.5687

200.7380, 0.6222,
-12.9252

138.3950, -2.1667,
41.7496

213.4870, 1.2389,
-24.1061

126.2330, -3.0729,
52.4157

225.6490, 2.1450,
-34.7722

113.5980, -3.2528,
63.4966

233.0010, 4.9295,
-41.2199

■ 100.8490, -3.8696,
74.6774

■ 234.3690, 10.1711,
-42.4196

■ 88.8010, -4.3389,
85.2435

■ 76.0520, -4.9556,
96.4244

■ 63.8900, -5.8618,
107.0905

Harmonies

Analogous

The Analogous color harmony consists of three colors that are next to each other on the color wheel.



175.9020, 2.0203, 5.3479



175.9410, -0.4639, 8.8217



175.5560, -3.2321, 10.0364

Triad

The Triadic color harmony groups three colors that are evenly spaced from another and form a triangle on the color wheel.



175.9410, -0.4639, 8.8217



173.8490, -4.3626, -0.7446



173.9110, 4.9739, -8.6919

Complementary

The Complementary color scheme is a pair of colors which are on the opposite of each other on the color wheel.



175.9410, -0.4639, 8.8217



181.0590, 0.4639, -8.8217

Split Complementary

Split-complementary colors differ from the complementary color scheme. The scheme consists of three colors, the original color and two neighbors of the complement color.



173.1450, 3.3795, -10.6512



175.9410, -0.4639, 8.8217



173.0980, -2.0203, -5.3479

Square

The Square scheme is like the rectangle color scheme, but the four colors are evenly spaced on the color wheel.



175.9410, -0.4639, 8.8217



174.6540, -5.2524, 4.6884



173.0590, 0.4639, -8.8217



174.4600, 5.6892, -4.7884

Rectangle

The Rectangle color scheme consists of four colors that form a rectangle on the color wheel.



175.9410, -0.4639, 8.8217



175.5020, -4.6845, 9.2067



173.0590, 0.4639, -8.8217



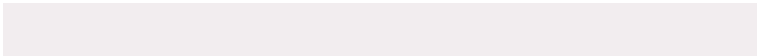
173.1990, 4.8319, -9.8215

Sweetspot

The Sweet Spot groups the original color and five complimentary colors.



175.9410, -0.4639, 8.8217



238.7230, 0.1366, 2.8739



175.9990, 4.9305, 5.2629



120.7120, 0.1420, 1.1296



250.0000, 0.0000, 0.0000



122.0000, 0.0000, 0.0000

Same Dimension

The Same Dimension uses a secret algorithm to generate beautiful new colors.



175.9410, -0.4639, 8.8217



225.8600, -0.9170, 14.1548



177.2460, -3.0793, 7.6773



85.9190, -0.4531, 5.3330



51.3180, -5.0868, 91.8061



9.1700, -1.0698, 16.5139

Inverse Universe

The Inverse Universe completely reimagines the original color for something new.



175.9410, -0.4639, 8.8217



225.8600, -0.9170, 14.1548



179.7540, 3.0793, -7.6773



85.9190, -0.4531, 5.3330



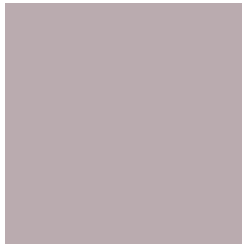
51.3180, -5.0868, 91.8061



9.1700, -1.0698, 16.5139

Previews

White Background



This preview shows how the YUV color 175.9410, -0.4639, 8.8217 looks on a white background.

Color Contrast Check

Large Text (above 18pt) WCAG AA × Fail

Any Text WCAG AA × Fail

Large Text (above 18pt) WCAG AAA × Fail

Any Text WCAG AAA × Fail

Black Background



This preview shows how the YUV color 175.9410, -0.4639, 8.8217 looks on a black background.

Color Contrast Check

Large Text (above 18pt) WCAG AA ✓ Pass

Any Text WCAG AA ✓ Pass

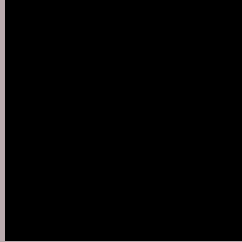
Large Text (above 18pt) WCAG AAA ✓ Pass

Any Text WCAG AAA ✓ Pass

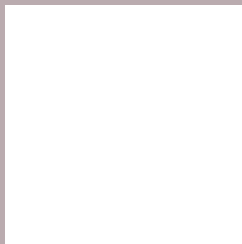
If you want to check with other color combinations, try the [Color Contrast Checker](#).

YUV 175.9410, -0.4639, 8.8217

Background



This preview shows how black text looks on a background with the YUV color 175.9410, -0.4639, 8.8217.



This preview shows how white text looks on a background with the YUV color 175.9410, -0.4639,

Color Blindness Simulation

Color vision deficiency is a very complex topic, and I could not describe the different causes any better than Wikipedia does, so if you want to learn more, you should check out their [article about color blindness](#).

Dichromacy



Original Color

175.9410, -0.4639, 8.8217

Protanopia

175.2390, 0.8682, 1.5444

Deuteranopia

176.2620, -0.6222, 12.9252



Tritanopia

176.5650, 3.1725, 9.1515

Trichromacy



Original Color

175.9410, -0.4639, 8.8217

Protanomaly

175.4350, 0.2785, 4.0035

Deuteranomaly

176.2510, -0.6167, 11.1809

Tritanomaly

176.2230, 1.8621, 9.4514

Monochromacy



Original Color

175.9410, -0.4639, 8.8217

Achromatopsia

176.0000, 0.0000, 0.0000

Achromatomaly

176.0220, -0.0108, 3.4887

CSS Examples

Text

The CSS property to change the color of the text to YUV 175.9410, -0.4639, 8.8217 is called "color". The color property can be set on classes, ids or directly on the HTML element.

This example shows how text in the color `rgb(186, 171, 175)` looks like.

```
.text, #text, p{  
    color:rgb(186, 171, 175)  
}
```

If you want to add a text shadow in that color use the text-shadow property, you can generate a text shadow directly with our [CSS Text Shadow Generator](#).

Here you see how black text with a 4 pixel rgb(186, 171, 175) colored shadow looks like.

```
.shadow{ text-shadow: 4px 4px 2px rgb(186, 171, 175) }
```

Border

The CSS property to change the border of an element to YUV 175.9410, -0.4639, 8.8217 is called "border". The border property can be set on classes, ids or directly on the HTML element.

This example shows the color as border, it can be applied via the CSS property "border" or "border-color".

```
.border, #border, table{ border:4px solid rgb(186, 171, 175) }
```


If only the border color should be changed use the property `border-color`.

```
.border{ border-color:rgb(186, 171, 175) }
```

If you want to add a box shadow in that color use:

Here you see how a box with a 4 pixel `rgb(186, 171, 175)` colored shadow looks like.

```
.boxshadow{ -moz-box-shadow:4px 4px 4px  
4px rgb(186, 171, 175); -webkit-box-  
shadow:4px 4px 4px 4px rgb(186, 171, 175);  
box-shadow:4px 4px 4px 4px rgb(186, 171,  
175) }
```

Background

The CSS property to change the background color of an element to YUV 175.9410, -0.4639, 8.8217 is called "background". The background property can be set on classes, ids or directly on the HTML element.

```
.background, #background, body{  
background: rgb(186, 171, 175) }
```

If only the background color should be changed can be used:

```
.background{ background-color: rgb(186,  
171, 175) }
```

This example shows the color as background, it is applied via the CSS property "background".

To optimize and compress your CSS code, you can use our [online CSS compressor and optimizer](#) based on csstidy. If you want to create a linear or radial gradient as background or border, check our [CSS Gradient Generator](#).

Hey! You found this booklet interesting? Support Converting Colors with the new Membership Option!

The pro membership hides all ads, plus gives you double the colors in the color bucket, and more awesome pro features!

[Learn more, Memberships starting at \\$2.50/m!](#)

**Follow me
on Twitter!**

@ConvertingColor