

Converting Colors

YUV(175.9600, -5.8963,
24.5911)

Have a look what the booklet for
YUV(175.9600, -5.8963, 24.5911)
contains.

YUV(175.9600, -5.8963, 24.5911)	3
<i>Conversions</i>	4
<i>Details</i>	6
<i>Harmonies</i>	12
<i>Previews</i>	24
<i>Color Blindness Simulation</i>	28
<i>CSS Examples</i>	31

Color

**YUV(175.9600, -5.8963,
24.5911)**

Conversions

Conversions Part 1

Format	Color
Hex	CCA4A4
RGB	204, 164, 164
RGB Percent	80%, 64%, 64%
CMY	0.2000, 0.3569, 0.3569
CMYK	0.00, 0.20, 0.20, 0.20
HSL	0°, 28%, 72%
HSV	0°, 20%, 80%
XYZ	44.8781, 42.0686, 40.8767
YIQ	175.9600, 23.8400, 8.4800

Conversions

Conversions Part 2

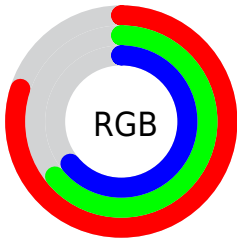
Format	Color
RYB	204, 164, 164
Decimal	13411492
CIELab	70.92, 14.70, 5.58
CIELCh	71, 15.722, 20.790
Yxy	42.0686, 0.3511, 0.3291
Android (android.graphics.Color)	4291601572 (0xFFCCA4A4)
YUV	175.9600, -5.8963, 24.5911
Hunter-Lab	64.8603, 10.0021, 8.0361

Details

The YUV color $175.9600, -5.8963, 24.5911$ is a light color, and the websafe version is hex $CC9999$. A complement of this color would be $192.0400, 5.8963, -24.5911$, and the grayscale version is $176.0000, 0.0000, 0.0000$.

A 20% lighter version of the original color is $229.7640, -5.3067, 22.1320$, and $123.0630, -5.4541, 22.7467$ is the 20% darker color. If you saturate the color by 10%, you get $161.9400, -8.8444, 36.8866$, and if you desaturate by 10%, it is $189.9800, -2.9481, 12.2955$.

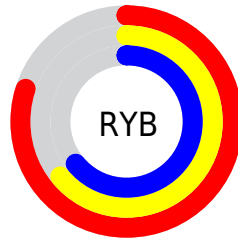
Distribution



Red (80%)

Green (64%)

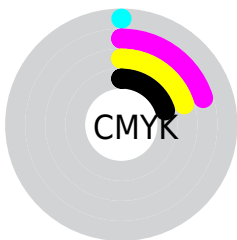
Blue (64%)



Red (80%)

Yellow (64%)

Blue (64%)

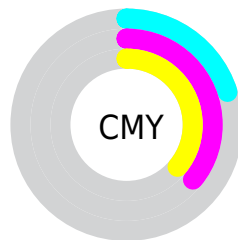


Cyan (0%)

Magenta (20%)

Yellow (20%)

Black (20%)



Cyan (20%)

Magenta (36%)

Yellow (36%)

Brightness & Saturation Gradients


These gradients show how the YUV color 175.9600, -5.8963, 24.5911 changes by changing the brightness by 10 percent. The first figure shows a shift by +10% for each color and the second figure -10%.

Similar to the brightness gradients but the following saturation gradients show a change of the YUV color 175.9600, -5.8963, 24.5911 by changing the saturation by 10% instead.


 175.9600, -5.8963,
24.5911


 175.9600, -5.8963,
24.5911


255.0000, 0.0000,
0.0000

 149.3620, -5.6015,
23.3615


 229.7640, -5.3067,
22.1320


 123.0630, -5.4541,
22.7467

 249.9790, -1.4686,
4.4034

 98.4650, -5.1592,
21.5172

 74.2800, -4.5750,
20.8024

 51.3830, -4.1328,
18.9581

 29.4860, -3.6906,
17.1138

 8.9700, -4.4222,

18.4433

■ 0.0000, 0.0000,
0.0000

■ 175.9600, -5.8963,
24.5911

■ 175.9600, -5.8963,
24.5911

■ 161.9400, -8.8444,
36.8866

■ 189.9800, -2.9481,
12.2955

■ 147.2190,
-11.9400, 49.7969

■ 204.7010, 0.1474,
-0.6148

■ 133.1990,
-14.8881, 62.0925

■ 218.7210, 3.0955,
-12.9103

■ 118.4780,
-17.9837, 75.0028

■ 233.4420, 6.1911,
-25.8206

■ 104.4580,
-20.9318, 87.2983

■ 239.7510, 7.5178,
-31.3536

■ 90.4380, -23.8799,
99.5939

■ 75.7170, -26.9755,
112.5042

■ 61.6970, -29.9236,
124.7997

■ 60.9960, -30.0710,
125.4145

Harmonies

Analogous

The Analogous color harmony consists of three colors that are next to each other on the color wheel.



176.4740, 1.2453, 20.6323



175.9600, -5.8963, 24.5911



175.1570, -11.4164, 21.7873

Triad

The Triadic color harmony groups three colors that are evenly spaced from another and form a triangle on the color wheel.



175.9600, -5.8963, 24.5911



170.5720, -7.6770, -11.0256



171.6740, 14.4577, -17.2541

Complementary

The Complementary color scheme is a pair of colors which are on the opposite of each other on the color wheel.



175.9600, -5.8963, 24.5911



192.0400, 5.8963, -24.5911

Split Complementary

Split-complementary colors differ from the complementary color scheme. The scheme consists of three colors, the original color and two neighbors of the complement color.



169.4510, 12.5957, -26.7055



175.9600, -5.8963, 24.5911



169.0420, -0.5137, -21.9618

Square

The Square scheme is like the rectangle color scheme, but the four colors are evenly spaced on the color wheel.



175.9600, -5.8963, 24.5911



172.0960, -12.3723, 1.6698



168.3600, 7.2175, -28.3797



174.3060, 12.6671, -2.8994

Rectangle

The Rectangle color scheme consists of four colors that form a rectangle on the color wheel.



175.9600, -5.8963, 24.5911



173.9670, -13.2947, 17.5689



168.3600, 7.2175, -28.3797



171.2390, 14.1792, -21.2576

Sweetspot

The Sweet Spot groups the original color and five complimentary colors.



175.9600, -5.8963, 24.5911



244.4850, -2.2111, 9.2217



180.5200, 11.5756, 20.5920



121.6910, -1.3267, 5.5330



0.0000, 0.0000, 0.0000



128.0000, 0.0000, 0.0000

Same Dimension

The Same Dimension uses a secret algorithm to generate beautiful new colors.



175.9600, -5.8963, 24.5911



212.2390, -8.9918, 37.5014



187.7000, -11.6841, 14.2951



94.9900, -1.4741, 6.1478



49.6340, -24.4696, 102.0530



11.3620, -5.6015, 23.3615

Inverse Universe

The Inverse Universe completely reimagines the original color for something new.



192.0400, 5.8963, -24.5911



236.7610, 8.9918, -37.5014



180.3000, 11.6841, -14.2951



99.0100, 1.4741, -6.1478



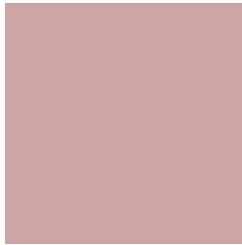
116.3660, 24.4696, -102.0530



26.6380, 5.6015, -23.3615

Previews

White Background



This preview shows how the YUV color 175.9600, -5.8963, 24.5911 looks on a white background.

Color Contrast Check

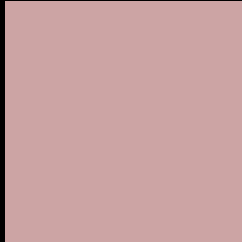
Large Text (above 18pt) WCAG AA × Fail

Any Text WCAG AA × Fail

Large Text (above 18pt) WCAG AAA × Fail

Any Text WCAG AAA × Fail

Black Background



This preview shows how the YUV color 175.9600, -5.8963, 24.5911 looks on a black background.

Color Contrast Check

Large Text (above 18pt) WCAG AA ✓ Pass

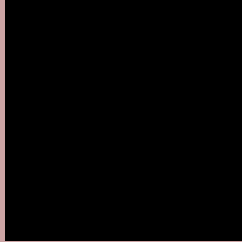
Any Text WCAG AA ✓ Pass

Large Text (above 18pt) WCAG AAA ✓ Pass

Any Text WCAG AAA ✓ Pass

If you want to check with other color combinations, try the [Color Contrast Checker](#).

YUV 175.9600, -5.8963, 24.5911 Background



This preview shows how black text looks on a background with the YUV color 175.9600, -5.8963, 24.5911.



This preview shows how white text looks on a background with the YUV color 175.9600, -5.8963,

Color Blindness Simulation

Color vision deficiency is a very complex topic, and I could not describe the different causes any better than Wikipedia does, so if you want to learn more, you should check out their [article about color blindness](#).

Dichromacy



Original Color

175.9600, -5.8963, 24.5911

Protanopia

174.0390, -2.4842, 3.4738

Deuteranopia

175.2040, -6.0166, 16.4841



Tritanopia

176.3390, -0.6601, 25.1357

Trichromacy



Original Color

175.9600, -5.8963, 24.5911

Protanomaly

174.7410, -3.8163, 10.7511

Deuteranomaly

175.8130, -6.3168, 19.4580

Tritanomaly

176.4700, -2.6967, 25.0208

Monochromacy



Original Color

175.9600, -5.8963, 24.5911

Achromatopsia

176.0000, 0.0000, 0.0000

Achromatomaly

176.1860, -2.0637, 8.6069

CSS Examples

Text

The CSS property to change the color of the text to YUV 175.9600, -5.8963, 24.5911 is called "color". The color property can be set on classes, ids or directly on the HTML element.

This example shows how text in the color `rgb(204, 164, 164)` looks like.

```
.text, #text, p{  
    color:rgb(204, 164, 164)  
}
```

If you want to add a text shadow in that color use the text-shadow property, you can generate a text shadow directly with our [CSS Text Shadow Generator](#).

Here you see how black text with a 4 pixel rgb(204, 164, 164) colored shadow looks like.

```
.shadow{ text-shadow: 4px 4px 2px rgb(204, 164, 164) }
```

Border

The CSS property to change the border of an element to YUV 175.9600, -5.8963, 24.5911 is called "border". The border property can be set on classes, ids or directly on the HTML element.

This example shows the color as border, it can be applied via the CSS property "border" or "border-color".

```
.border, #border, table{ border:4px solid rgb(204, 164, 164) }
```


If only the border color should be changed use the property `border-color`.

```
.border{ border-color:rgb(204, 164, 164) }
```

If you want to add a box shadow in that color use:

Here you see how a box with a 4 pixel `rgb(204, 164, 164)` colored shadow looks like.

```
.boxshadow{ -moz-box-shadow:4px 4px 4px  
4px rgb(204, 164, 164); -webkit-box-  
shadow:4px 4px 4px 4px rgb(204, 164, 164);  
box-shadow:4px 4px 4px 4px rgb(204, 164,  
164) }
```

Background

The CSS property to change the background color of an element to YUV 175.9600, -5.8963, 24.5911 is called "background". The background property can be set on classes, ids or directly on the HTML element.

```
.background, #background, body{  
background: rgb(204, 164, 164) }
```

If only the background color should be changed can be used:

```
.background{ background-color: rgb(204,  
164, 164) }
```

This example shows the color as background, it is applied via the CSS property "background".

To optimize and compress your CSS code, you can use our [online CSS compressor and optimizer](#) based on csstidy. If you want to create a linear or radial gradient as background or border, check our [CSS Gradient Generator](#).

Hey! You found this booklet interesting? Support Converting Colors with the new Membership Option!

The pro membership hides all ads, plus gives you double the colors in the color bucket, and more awesome pro features!

[Learn more, Memberships starting at \\$2.50/m!](#)

**Follow me
on Twitter!**

@ConvertingColor