

Converting Colors

YUV(176.0180, -17.2639,
30.6792)

Have a look what the booklet for
YUV(176.0180, -17.2639, 30.6792)
contains.

YUV(176.0180, -17.2639, 30.6792)	3
<i>Conversions</i>	4
<i>Details</i>	6
<i>Harmonies</i>	12
<i>Previews</i>	24
<i>Color Blindness Simulation</i>	28
<i>CSS Examples</i>	31

Color

**YUV(176.0180, -17.2639,
30.6792)**

Conversions

Conversions Part 1

Format	Color
Hex	D3A58D
RGB	211, 165, 141
RGB Percent	83%, 65%, 55%
CMY	0.1725, 0.3529, 0.4471
CMYK	0.00, 0.22, 0.33, 0.17
HSL	21°, 44%, 69%
HSV	21°, 33%, 83%
XYZ	45.1268, 42.6822, 31.0594
YIQ	176.0180, 35.1200, 2.2880

Conversions

Conversions Part 2

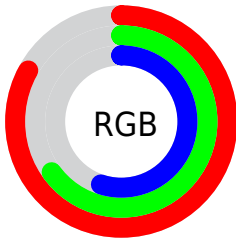
Format	Color
R_{YB}	211, 178, 141
Decimal	13870477
CIE Lab	71.34, 13.60, 18.93
CIE LCh	71, 23.309, 54.296
Yxy	42.6822, 0.3796, 0.3591
Android (android.graphics.Color)	4292060557 (0xFFD3A58D)
YUV	176.0180, -17.2639, 30.6792
Hunter-Lab	65.3316, 8.9657, 17.5451

Details

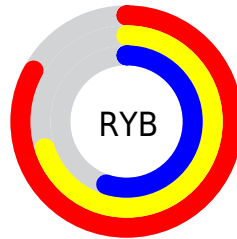
The YUV color $176.0180, -17.2639, 30.6792$ is a light color, and the websafe version is hex $CC9999$. A complement of this color would be $175.9820, 17.2639, -30.6792$, and the grayscale version is $176.0000, 0.0000, 0.0000$.

A 20% lighter version of the original color is $227.6150, -16.0792, 24.0166$, and $123.0500, -15.8006, 28.0202$ is the 20% darker color. If you saturate the color by 10%, you get $165.4060, -22.3852, 39.9859$, and if you desaturate by 10%, it is $186.6300, -12.1426, 21.3725$.

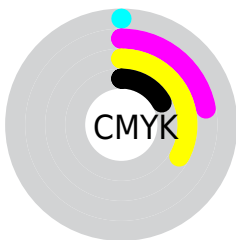
Distribution



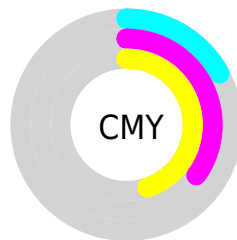
- Red (83%)
- Green (65%)
- Blue (55%)



- Red (83%)
- Yellow (70%)
- Blue (55%)



- Cyan (0%)
- Magenta (22%)
- Yellow (33%)
- Black (17%)



- Cyan (17%)
- Magenta (35%)
- Yellow (45%)

Brightness & Saturation Gradients

These gradients show how the YUV color 176.0180, -17.2639, 30.6792 changes by changing the brightness by 10 percent. The first figure shows a shift by +10% for each color and the second figure -10%.

Similar to the brightness gradients but the following saturation gradients show a change of the YUV color 176.0180, -17.2639, 30.6792 by changing the saturation by 10% instead.

■ 176.0180,
-17.2639, 30.6792

■ 176.0180,
-17.2639, 30.6792

■ 255.0000, 0.0000,
0.0000

■ 149.4200,
-16.9691, 29.4497

■ 227.6150,
-16.0792, 24.0166

■ 123.0500,
-15.8006, 28.0202

■ 247.8300,
-12.2412, 6.2881

■ 98.1530, -15.3584,
26.1758

■ 254.5440, -1.7472,
0.3999

■ 73.7830, -14.1900,
24.7463

■ 51.0000, -13.3110,
22.8020

■ 28.7610, -14.1792,
21.2576

■ 8.9700, -4.4222,

18.4433

■ 0.0000, 0.0000,
0.0000

■ 176.0180,
-17.2639, 30.6792

■ 176.0180,
-17.2639, 30.6792

■ 165.4060,
-22.3852, 39.9859

■ 186.6300,
-12.1426, 21.3725

■ 154.7940,
-27.5064, 49.2927

■ 197.2420, -7.0213,
12.0658

■ 144.1820,
-32.6277, 58.5994

■ 207.8540, -1.9000,
2.7590

■ 134.1570,
-38.0384, 67.3913

■ 217.8790, 3.5107,
-6.0329

■ 123.5450,
-43.1597, 76.6980

■ 228.6050, 9.0687,
-15.4396

■ 112.8190,
-48.7178, 86.1047

■ 237.7350, 8.5116,
-23.4466

■ 105.3530,
-51.9390, 92.6524

■ 241.8440, 6.4859,
-27.0502

Harmonies

Analogous

The Analogous color harmony consists of three colors that are next to each other on the color wheel.



177.1140, -9.4232, 35.8570



176.0180, -17.2639, 30.6792



174.4310, -20.4255, 18.0390

Triad

The Triadic color harmony groups three colors that are evenly spaced from another and form a triangle on the color wheel.



176.0180, -17.2639, 30.6792



166.8230, 1.5663, -35.8018



176.3860, 18.0507, -2.9695

Complementary

The Complementary color scheme is a pair of colors which are on the opposite of each other on the color wheel.



176.0180, -17.2639, 30.6792



175.9820, 17.2639, -30.6792

Split Complementary

Split-complementary colors differ from the complementary color scheme. The scheme consists of three colors, the original color and two neighbors of the complement color.



172.1660, 21.6102, -24.7016



176.0180, -17.2639, 30.6792



165.0420, 12.7973, -44.7638

Square

The Square scheme is like the rectangle color scheme, but the four colors are evenly spaced on the color wheel.



176.0180, -17.2639, 30.6792



169.2460, -9.9813, -18.6327



167.3120, 20.0592, -40.6156



178.2700, 10.7129, 17.3032

Rectangle

The Rectangle color scheme consists of four colors that form a rectangle on the color wheel.



176.0180, -17.2639, 30.6792



172.8810, -19.6613, 6.2434



167.3120, 20.0592, -40.6156



174.9120, 20.2564, -10.4468

Sweetspot

The Sweet Spot groups the original color and five complimentary colors.



176.0180, -17.2639, 30.6792



242.1710, -6.0003, 11.2510



167.2880, 10.2110, 38.3354



119.7190, -3.8055, 7.2624



0.0000, 0.0000, 0.0000



128.0000, 0.0000, 0.0000

Same Dimension

The Same Dimension uses a secret algorithm to generate beautiful new colors.



176.0180, -17.2639, 30.6792



204.0430, -25.1642, 44.6893



195.9760, -27.1032, 13.1760



99.6370, -2.7790, 4.7034



84.2780, -41.5491, 73.4242



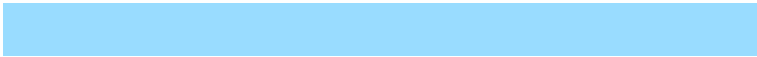
20.4770, -10.0952, 17.9987

Inverse Universe

The Inverse Universe completely reimagines the original color for something new.



175.9820, 17.2639, -30.6792



203.9570, 25.1642, -44.6893



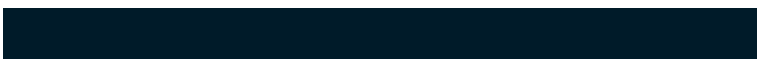
156.0240, 27.1032, -13.1760



99.3630, 2.7790, -4.7034



84.3090, 41.2597, -73.9390



20.5230, 10.0952, -17.9987

Previews

White Background



This preview shows how the YUV color 176.0180, -17.2639, 30.6792 looks on a white background.

Color Contrast Check

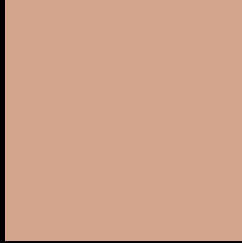
Large Text (above 18pt) WCAG AA × Fail

Any Text WCAG AA × Fail

Large Text (above 18pt) WCAG AAA × Fail

Any Text WCAG AAA × Fail

Black Background



This preview shows how the YUV color 176.0180, -17.2639, 30.6792 looks on a black background.

Color Contrast Check

Large Text (above 18pt) WCAG AA ✓ Pass

Any Text WCAG AA ✓ Pass

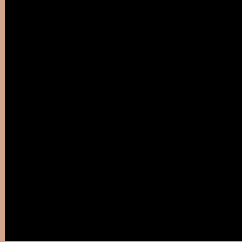
Large Text (above 18pt) WCAG AAA ✓ Pass

Any Text WCAG AAA ✓ Pass

If you want to check with other color combinations, try the [Color Contrast Checker](#).

YUV 176.0180, -17.2639, 30.6792

Background



This preview shows how black text looks on a background with the YUV color 176.0180, -17.2639, 30.6792.



This preview shows how white text looks on a background with the YUV color 176.0180, -17.2639, 30.6792.

30.6792.

Color Blindness Simulation

Color vision deficiency is a very complex topic, and I could not describe the different causes any better than Wikipedia does, so if you want to learn more, you should check out their [article about color blindness](#).

Dichromacy



Original Color

176.0180, -17.2639, 30.6792

Protanopia

174.6840, -14.1412, 9.0471

Deuteranopia

175.5720, -17.5370, 24.9314



Tritanopia

177.6280, -2.2816, 31.8982

Trichromacy



Original Color

176.0180, -17.2639, 30.6792

Protanomaly

174.7990, -15.1839, 16.8393

Deuteranomaly

175.8820, -17.6898, 27.2905

Tritanomaly

177.1350, -7.9546, 31.4536

Monochromacy



Original Color

176.0180, -17.2639, 30.6792

Achromatopsia

176.0000, 0.0000, 0.0000

Achromatomaly

176.0570, -6.4371, 11.3510

CSS Examples

Text

The CSS property to change the color of the text to YUV 176.0180, -17.2639, 30.6792 is called "color". The color property can be set on classes, ids or directly on the HTML element.

This example shows how text in the color `rgb(211, 165, 141)` looks like.

```
.text, #text, p{  
    color:rgb(211, 165, 141)  
}
```

If you want to add a text shadow in that color use the text-shadow property, you can generate a text shadow directly with our [CSS Text Shadow Generator](#).

Here you see how black text with a 4 pixel rgb(211, 165, 141) colored shadow looks like.

```
.shadow{ text-shadow: 4px 4px 2px rgb(211, 165, 141) }
```

Border

The CSS property to change the border of an element to YUV 176.0180, -17.2639, 30.6792 is called "border".

The border property can be set on classes, ids or directly on the HTML element.

This example shows the color as border, it can be applied via the CSS property "border" or "border-color".

```
.border, #border, table{ border:4px solid rgb(211, 165, 141) }
```


If only the border color should be changed use the property border-color.

```
.border{ border-color:rgb(211, 165, 141) }
```

If you want to add a box shadow in that color use:

Here you see how a box with a 4 pixel rgb(211, 165, 141) colored shadow looks like.

```
.boxshadow{ -moz-box-shadow:4px 4px 4px  
4px rgb(211, 165, 141); -webkit-box-  
shadow:4px 4px 4px 4px rgb(211, 165, 141);  
box-shadow:4px 4px 4px 4px rgb(211, 165,  
141) }
```

Background

The CSS property to change the background color of an element to YUV 176.0180, -17.2639, 30.6792 is called "background". The background property can be set on classes, ids or directly on the HTML element.

```
.background, #background, body{  
background: rgb(211, 165, 141) }
```

If only the background color should be changed can be used:

```
.background{ background-color: rgb(211,  
165, 141) }
```

This example shows the color as background, it is applied via the CSS property "background".

To optimize and compress your CSS code, you can use our [online CSS compressor and optimizer](#) based on csstidy. If you want to create a linear or radial gradient as background or border, check our [CSS Gradient Generator](#).

Hey! You found this booklet interesting? Support Converting Colors with the new Membership Option!

The pro membership hides all ads, plus gives you double the colors in the color bucket, and more awesome pro features!

[Learn more, Memberships starting at \\$2.50/m!](#)

**Follow me
on Twitter!**

@ConvertingColor