

Converting Colors

YUV(176.1740, -10.4388,
34.9274)

Have a look what the booklet for
YUV(176.1740, -10.4388, 34.9274)
contains.

YUV(176.1740, -10.4388, 34.9274)	3
<i>Conversions</i>	4
<i>Details</i>	6
<i>Harmonies</i>	12
<i>Previews</i>	24
<i>Color Blindness Simulation</i>	28
<i>CSS Examples</i>	31

Color

**YUV(176.1740, -10.4388,
34.9274)**

Conversions

Conversions Part 1

Format	Color
Hex	D8A09B
RGB	216, 160, 155
RGB Percent	85%, 63%, 61%
CMY	0.1529, 0.3725, 0.3922
CMYK	0.00, 0.26, 0.28, 0.15
HSL	5°, 44%, 73%
HSV	5°, 28%, 85%
XYZ	46.8061, 42.1071, 36.6709
YIQ	176.1740, 34.9810, 10.3170

Conversions

Conversions Part 2

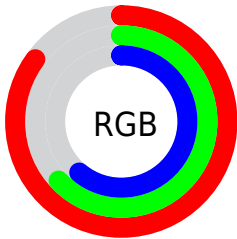
Format	Color
R _Y B	216, 160, 155
Decimal	14196891
CIE Lab	70.94, 20.08, 10.75
CIE LCh	71, 22.780, 28.171
Yxy	42.1071, 0.3727, 0.3353
Android (android.graphics.Color)	4292386971 (0xFFD8A09B)
YUV	176.1740, -10.4388, 34.9274
Hunter-Lab	64.8900, 15.1972, 11.9168

Details

The YUV color **176.1740, -10.4388, 34.9274** is a light color, and the websafe version is hex **CC9999**. A complement of this color would be **194.8260, 10.4388, -34.9274**, and the grayscale version is **176.0000, 0.0000, 0.0000**.

A 20% lighter version of the original color is **226.2760, -8.5171, 25.1909**, and **123.0920, -9.4124, 32.3683** is the 20% darker color. If you saturate the color by 10%, you get **161.9260, -14.2605, 47.4229**, and if you desaturate by 10%, it is **190.4220, -6.6170, 22.4319**.

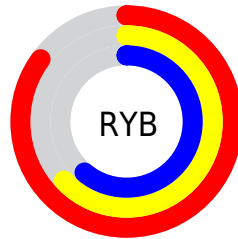
Distribution



Red (85%)

Green (63%)

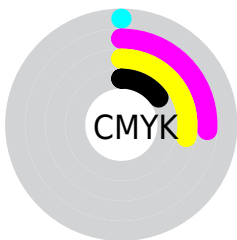
Blue (61%)



Red (85%)

Yellow (63%)

Blue (61%)

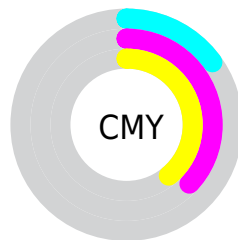


Cyan (0%)

Magenta (26%)

Yellow (28%)

Black (15%)



Cyan (15%)

Magenta (37%)

Yellow (39%)

Brightness & Saturation Gradients

These gradients show how the YUV color 176.1740, -10.4388, 34.9274 changes by changing the brightness by 10 percent. The first figure shows a shift by +10% for each color and the second figure -10%.

Similar to the brightness gradients but the following saturation gradients show a change of the YUV color 176.1740, -10.4388, 34.9274 by changing the saturation by 10% instead.

■ 176.1740,
-10.4388, 34.9274

■ 176.1740,
-10.4388, 34.9274

255.0000, 0.0000,
0.0000

■ 149.5760,
-10.1440, 33.6978

■ 226.2760, -8.5171,
25.1909

■ 123.0920, -9.4124,
32.3683

■ 246.0180, -3.9529,
7.8772

■ 98.1950, -8.9701,
30.5240

■ 73.7110, -8.2385,
29.1945

■ 50.5150, -7.6489,
26.7353

■ 27.7320, -6.7699,
24.7910

■ 10.7640, -5.3067,

22.1320

0.0000, 0.0000,
0.0000

176.1740,
-10.4388, 34.9274

176.1740,
-10.4388, 34.9274

161.9260,
-14.2605, 47.4229

190.4220, -6.6170,
22.4319

147.7920,
-17.6455, 59.8184

204.5560, -3.2321,
10.0364

134.1310,
-21.7566, 71.7991

218.2170, 0.8790,
-1.9443

119.9970,
-25.1415, 84.1946

232.3510, 4.2640,
-14.3398

105.7490,
-28.9633, 96.6901

243.3390, 5.7489,
-23.9763

■ 91.5010, -32.7850,
109.1856

■ 77.3670, -36.1699,
121.5811

■ 75.1500, -37.0490,
123.5254

Harmonies

Analogous

The Analogous color harmony consists of three colors that are next to each other on the color wheel.



177.0840, -0.5344, 31.4983



176.1740, -10.4388, 34.9274



174.8930, -17.6952, 29.0348

Triad

The Triadic color harmony groups three colors that are evenly spaced from another and form a triangle on the color wheel.



176.1740, -10.4388, 34.9274



167.6910, -8.2287, -20.7770



171.7750, 21.3099, -21.7277

Complementary

The Complementary color scheme is a pair of colors which are on the opposite of each other on the color wheel.



176.1740, -10.4388, 34.9274



194.8260, 10.4388, -34.9274

Split Complementary

Split-complementary colors differ from the complementary color scheme. The scheme consists of three colors, the original color and two neighbors of the complement color.



167.6220, 19.9064, -38.2565



176.1740, -10.4388, 34.9274



165.2790, 3.3135, -36.2017

Square

The Square scheme is like the rectangle color scheme, but the four colors are evenly spaced on the color wheel.



176.1740, -10.4388, 34.9274



170.3360, -16.4346, -2.0487



164.8680, 13.3761, -43.7342



175.4680, 17.0243, -0.4104

Rectangle

The Rectangle color scheme consists of four colors that form a rectangle on the color wheel.



176.1740, -10.4388, 34.9274



173.2680, -19.8521, 20.8130



164.8680, 13.3761, -43.7342



170.1440, 21.6210, -28.1903

Sweetspot

The Sweet Spot groups the original color and five complimentary colors.



176.1740, -10.4388, 34.9274



241.5670, -3.2375, 11.7807



179.7370, 15.9057, 31.8027



119.4740, -2.2057, 7.4773



0.0000, 0.0000, 0.0000



128.0000, 0.0000, 0.0000

Same Dimension

The Same Dimension uses a secret algorithm to generate beautiful new colors.



176.1740, -10.4388, 34.9274



198.1220, -14.8501, 49.8820



193.7840, -19.1205, 19.4834



99.8760, -1.9109, 6.2477



59.3470, -29.2581, 97.9197



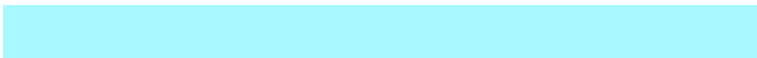
15.2050, -7.4961, 24.3762

Inverse Universe

The Inverse Universe completely reimagines the original color for something new.



194.8260, 10.4388, -34.9274



224.8780, 14.8501, -49.8820



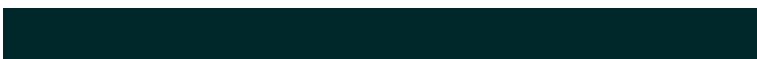
177.2160, 19.1205, -19.4834



103.1240, 1.9109, -6.2477



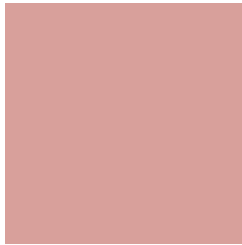
111.6530, 29.2581, -97.9197



28.3820, 7.2067, -24.8910

Previews

White Background



This preview shows how the YUV color 176.1740, -10.4388, 34.9274 looks on a white background.

Color Contrast Check

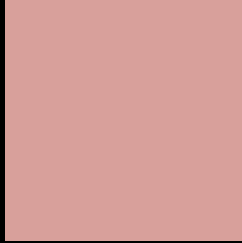
Large Text (above 18pt) WCAG AA × Fail

Any Text WCAG AA × Fail

Large Text (above 18pt) WCAG AAA × Fail

Any Text WCAG AAA × Fail

Black Background



This preview shows how the YUV color 176.1740, -10.4388, 34.9274 looks on a black background.

Color Contrast Check

Large Text (above 18pt) WCAG AA ✓ Pass

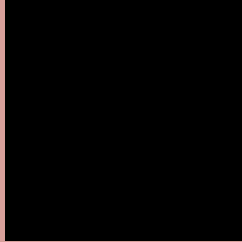
Any Text WCAG AA ✓ Pass

Large Text (above 18pt) WCAG AAA ✓ Pass

Any Text WCAG AAA ✓ Pass

If you want to check with other color combinations, try the [Color Contrast Checker](#).

YUV 176.1740, -10.4388, 34.9274 Background



This preview shows how black text looks on a background with the YUV color 176.1740, -10.4388, 34.9274.



This preview shows how white text looks on a background with the YUV color 176.1740, -10.4388,

34.9274.

Color Blindness Simulation

Color vision deficiency is a very complex topic, and I could not describe the different causes any better than Wikipedia does, so if you want to learn more, you should check out their [article about color blindness](#).

Dichromacy



Original Color

176.1740, -10.4388, 34.9274

Protanopia

173.8390, -5.8366, 5.4032

Deuteranopia

175.3740, -10.5374, 19.8430



Tritanopia

177.3080, -3.6028, 35.6869

Trichromacy



Original Color

176.1740, -10.4388, 34.9274

Protanomaly

174.4490, -7.6164, 16.2692

Deuteranomaly

175.7060, -10.7011, 25.6908

Tritanomaly

177.0260, -5.9288, 35.0572

Monochromacy



Original Color

176.1740, -10.4388, 34.9274

Achromatopsia

176.0000, 0.0000, 0.0000

Achromatomaly

176.0510, -3.9691, 13.1103

CSS Examples

Text

The CSS property to change the color of the text to YUV 176.1740, -10.4388, 34.9274 is called "color". The color property can be set on classes, ids or directly on the HTML element.

This example shows how text in the color `rgb(216, 160, 155)` looks like.

```
.text, #text, p{  
    color:rgb(216, 160, 155)  
}
```

If you want to add a text shadow in that color use the text-shadow property, you can generate a text shadow directly with our [CSS Text Shadow Generator](#).

Here you see how black text with a 4 pixel rgb(216, 160, 155) colored shadow looks like.

```
.shadow{ text-shadow: 4px 4px 2px rgb(216, 160, 155) }
```

Border

The CSS property to change the border of an element to YUV 176.1740, -10.4388, 34.9274 is called "border".

The border property can be set on classes, ids or directly on the HTML element.

This example shows the color as border, it can be applied via the CSS property "border" or "border-color".

```
.border, #border, table{ border:4px solid rgb(216, 160, 155) }
```


If only the border color should be changed use the property `border-color`.

```
.border{ border-color:rgb(216, 160, 155) }
```

If you want to add a box shadow in that color use:

Here you see how a box with a 4 pixel `rgb(216, 160, 155)` colored shadow looks like.

```
.boxshadow{ -moz-box-shadow:4px 4px 4px  
4px rgb(216, 160, 155); -webkit-box-  
shadow:4px 4px 4px 4px rgb(216, 160, 155);  
box-shadow:4px 4px 4px 4px rgb(216, 160,  
155) }
```

Background

The CSS property to change the background color of an element to YUV 176.1740, -10.4388, 34.9274 is called "background". The background property can be set on classes, ids or directly on the HTML element.

```
.background, #background, body{  
background: rgb(216, 160, 155) }
```

If only the background color should be changed can be used:

```
.background{ background-color: rgb(216,  
160, 155) }
```

This example shows the color as background, it is applied via the CSS property "background".

To optimize and compress your CSS code, you can use our [online CSS compressor and optimizer](#) based on csstidy. If you want to create a linear or radial gradient as background or border, check our [CSS Gradient Generator](#).

Hey! You found this booklet interesting? Support Converting Colors with the new Membership Option!

The pro membership hides all ads, plus gives you double the colors in the color bucket, and more awesome pro features!

[Learn more, Memberships starting at \\$2.50/m!](#)

**Follow me
on Twitter!**

@ConvertingColor