

Converting Colors

YUV(176.3160, 0.8302, 13.7549)

Have a look what the booklet for
YUV(176.3160, 0.8302, 13.7549)
contains.

YUV(176.3160, 0.8302, 13.7549)	3
<i>Conversions</i>	4
<i>Details</i>	6
<i>Harmonies</i>	12
<i>Previews</i>	24
<i>Color Blindness Simulation</i>	28
<i>CSS Examples</i>	31

Color

**YUV(176.3160, 0.8302,
13.7549)**

Conversions

Conversions Part 1

Format	Color
Hex	C0A8B2
RGB	192, 168, 178
RGB Percent	75%, 66%, 70%
CMY	0.2471, 0.3412, 0.3020
CMYK	0.00, 0.12, 0.07, 0.25
HSL	335°, 16%, 71%
HSV	335°, 12%, 75%
XYZ	43.7767, 42.4261, 48.0012
YIQ	176.3160, 11.0940, 8.1980

Conversions

Conversions Part 2

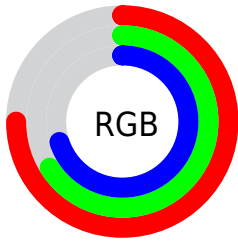
Format	Color
R_{YB}	192, 168, 178
Decimal	12626098
CIE Lab	71.16, 10.43, -1.93
CIE LCh	71, 10.606, 349.494
Yxy	42.4261, 0.3262, 0.3161
Android (android.graphics.Color)	4290816178 (0xFFC0A8B2)
YUV	176.3160, 0.8302, 13.7549
Hunter-Lab	65.1353, 5.9811, 1.9011

Details

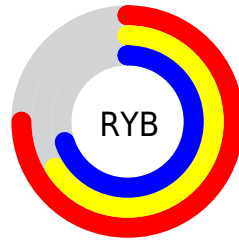
The YUV color **176.3160, 0.8302, 13.7549** is a light color, and the websafe version is hex **CC9999**. A complement of this color would be **183.6840, -0.8302, -13.7549**, and the grayscale version is **176.0000, 0.0000, 0.0000**.

A 20% lighter version of the original color is **232.0280, 0.9722, 14.8844**, and **123.6040, 0.6882, 12.6253** is the 20% darker color. If you saturate the color by 10%, you get **163.9090, 1.5239, 24.6358**, and if you desaturate by 10%, it is **188.7230, 0.1366, 2.8739**.

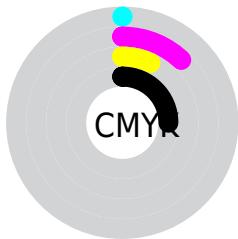
Distribution



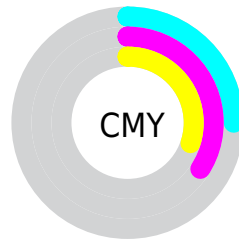
- Red (75%)
- Green (66%)
- Blue (70%)



- Red (75%)
- Yellow (66%)
- Blue (70%)



- Cyan (0%)
- Magenta (12%)
- Yellow (7%)
- Black (25%)



- Cyan (25%)
- Magenta (34%)
- Yellow (30%)

Brightness & Saturation Gradients


These gradients show how the YUV color 176.3160, 0.8302, 13.7549 changes by changing the brightness by 10 percent. The first figure shows a shift by +10% for each color and the second figure -10%.


Similar to the brightness gradients but the following saturation gradients show a change of the YUV color 176.3160, 0.8302, 13.7549 by changing the saturation by 10% instead.

 176.3160, 0.8302,
13.7549


 176.3160, 0.8302,
13.7549

255.0000, 0.0000,
0.0000

 149.9030, 0.5408,
13.2401

 232.0280, 0.9722,
14.8844


 123.6040, 0.6882,
12.6253

 253.2390, 0.8682,
1.5444

 98.6040, 0.6882,
12.6253

 75.0060, 0.9830,
11.3957

 52.0060, 0.9830,
11.3957

 30.9950, 0.9885,
9.6514

 8.2020, 0.3934,

13.8548

■ 0.0000, 0.0000,
0.0000

■ 176.3160, 0.8302,
13.7549

■ 176.3160, 0.8302,
13.7549

■ 163.9090, 1.5239,
24.6358

■ 188.7230, 0.1366,
2.8739

■ 151.5020, 2.2175,
35.5167

■ 201.1300, -0.5571,
-8.0070

■ 138.3940, 2.7638,
47.0125

■ 214.2380, -1.1033,
-19.5027

■ 125.9870, 3.4574,
57.8934

■ 226.6450, -1.7970,
-30.3837

■ 113.5800, 4.1511,
68.7743

■ 233.7690, 0.1139,
-36.6314

■ 101.1730, 4.8447,
79.6553

■ 235.0230, 4.9187,
-37.7312

■ 88.7660, 5.5384,
90.5362

■ 236.1630, 9.2866,
-38.7310

■ 75.6580, 6.0846,
102.0319

■ 66.5280, 6.6417,
110.0389

Harmonies

Analogous

The Analogous color harmony consists of three colors that are next to each other on the color wheel.



176.1240, 5.3619, 6.9073



176.3160, 0.8302, 13.7549



176.0730, -3.9800, 16.5990

Triad

The Triadic color harmony groups three colors that are evenly spaced from another and form a triangle on the color wheel.



176.3160, 0.8302, 13.7549



173.4210, -8.5886, 1.3848



171.9530, 7.9112, -17.4988

Complementary

The Complementary color scheme is a pair of colors which are on the opposite of each other on the color wheel.



176.3160, 0.8302, 13.7549



183.6840, -0.8302, -13.7549

Split Complementary

Split-complementary colors differ from the complementary color scheme. The scheme consists of three colors, the original color and two neighbors of the complement color.



171.0300, 4.4222, -18.4433



176.3160, 0.8302, 13.7549



171.8760, -5.3619, -6.9073

Square

The Square scheme is like the rectangle color scheme, but the four colors are evenly spaced on the color wheel.



176.3160, 0.8302, 13.7549



174.2480, -9.4893, 10.3065



171.3850, -0.6828, -14.3696



173.1540, 9.7841, -11.5361

Rectangle

The Rectangle color scheme consists of four colors that form a rectangle on the color wheel.



176.3160, 0.8302, 13.7549



175.6770, -6.7428, 16.0693



171.3850, -0.6828, -14.3696



171.4260, 7.1850, -17.9136

Sweetspot

The Sweet Spot groups the original color and five complimentary colors.



176.3160, 0.8302, 13.7549



243.4460, 0.2731, 5.7479



174.9220, 8.4195, 6.2074



121.0220, -0.0108, 3.4887



252.0000, 0.0000, 0.0000



125.0000, 0.0000, 0.0000

Same Dimension

The Same Dimension uses a secret algorithm to generate beautiful new colors.



176.3160, 0.8302, 13.7549



225.1860, 1.3873, 21.7619



176.3500, -4.1165, 13.7251



90.4460, 0.2731, 5.7479



55.7770, 5.5329, 92.2806



11.4630, 1.2507, 18.8879

Inverse Universe

The Inverse Universe completely reimagines the original color for something new.



176.3160, 0.8302, 13.7549



225.1860, 1.3873, 21.7619



183.6500, 4.1165, -13.7251



90.4460, 0.2731, 5.7479



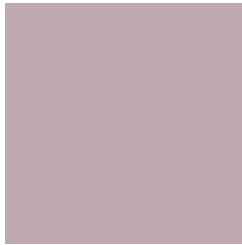
55.7770, 5.5329, 92.2806



11.4630, 1.2507, 18.8879

Previews

White Background



This preview shows how the YUV color 176.3160, 0.8302, 13.7549 looks on a white background.

Color Contrast Check

Large Text (above 18pt) WCAG AA × Fail

Any Text WCAG AA × Fail

Large Text (above 18pt) WCAG AAA × Fail

Any Text WCAG AAA × Fail

Black Background



This preview shows how the YUV color 176.3160, 0.8302, 13.7549 looks on a black background.

Color Contrast Check

Large Text (above 18pt) WCAG AA ✓ Pass

Any Text WCAG AA ✓ Pass

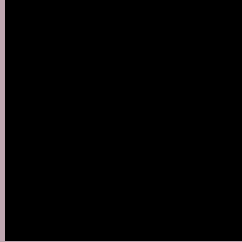
Large Text (above 18pt) WCAG AAA ✓ Pass

Any Text WCAG AAA ✓ Pass

If you want to check with other color combinations, try the [Color Contrast Checker](#).

YUV 176.3160, 0.8302, 13.7549

Background



This preview shows how black text looks on a background with the YUV color 176.3160, 0.8302, 13.7549.



This preview shows how white text looks on a background with the YUV color 176.3160, 0.8302,

Color Blindness Simulation

Color vision deficiency is a very complex topic, and I could not describe the different causes any better than Wikipedia does, so if you want to learn more, you should check out their [article about color blindness](#).

Dichromacy



Original Color

176.3160, 0.8302, 13.7549

Protanopia

174.5100, 3.1996, 0.4297

Deuteranopia

176.3050, 0.8356, 12.0105



Tritanopia

176.6580, 2.1406, 13.4549

Trichromacy



Original Color

176.3160, 0.8302, 13.7549

Protanomaly

175.0160, 2.4571, 5.2480

Deuteranomaly

176.6040, 0.6882, 12.6253

Tritanomaly

176.5440, 1.7038, 13.5549

Monochromacy



Original Color

176.3160, 0.8302, 13.7549

Achromatopsia

176.0000, 0.0000, 0.0000

Achromatomaly

176.1470, 0.4205, 5.1331

CSS Examples

Text

The CSS property to change the color of the text to YUV 176.3160, 0.8302, 13.7549 is called "color". The color property can be set on classes, ids or directly on the HTML element.

This example shows how text in the color `rgb(192, 168, 178)` looks like.

```
.text, #text, p{  
    color:rgb(192, 168, 178)  
}
```

If you want to add a text shadow in that color use the text-shadow property, you can generate a text shadow directly with our [CSS Text Shadow Generator](#).

Here you see how black text with a 4 pixel rgb(192, 168, 178) colored shadow looks like.

```
.shadow{ text-shadow: 4px 4px 2px rgb(192, 168, 178) }
```

Border

The CSS property to change the border of an element to YUV 176.3160, 0.8302, 13.7549 is called "border". The border property can be set on classes, ids or directly on the HTML element.

This example shows the color as border, it can be applied via the CSS property "border" or "border-color".

```
.border, #border, table{ border:4px solid rgb(192, 168, 178) }
```


If only the border color should be changed use the property `border-color`.

```
.border{ border-color:rgb(192, 168, 178) }
```

If you want to add a box shadow in that color use:

Here you see how a box with a 4 pixel `rgb(192, 168, 178)` colored shadow looks like.

```
.boxshadow{ -moz-box-shadow:4px 4px 4px  
4px rgb(192, 168, 178); -webkit-box-  
shadow:4px 4px 4px 4px rgb(192, 168, 178);  
box-shadow:4px 4px 4px 4px rgb(192, 168,  
178) }
```

Background

The CSS property to change the background color of an element to YUV 176.3160, 0.8302, 13.7549 is called "background". The background property can be set on classes, ids or directly on the HTML element.

```
.background, #background, body{  
background: rgb(192, 168, 178) }
```

If only the background color should be changed can be used:

```
.background{ background-color: rgb(192,  
168, 178) }
```

This example shows the color as background, it is applied via the CSS property "background".

To optimize and compress your CSS code, you can use our [online CSS compressor and optimizer](#) based on csstidy. If you want to create a linear or radial gradient as background or border, check our [CSS Gradient Generator](#).

Hey! You found this booklet interesting? Support Converting Colors with the new Membership Option!

The pro membership hides all ads, plus gives you double the colors in the color bucket, and more awesome pro features!

[Learn more, Memberships starting at \\$2.50/m!](#)

**Follow me
on Twitter!**

@ConvertingColor