

# Converting Colors

YUV(176.4530, -10.0833,  
60.9927)

Have a look what the booklet for  
YUV(176.4530, -10.0833, 60.9927)  
contains.

<b>YUV(176.4530, -10.0833, 60.9927)</b> .....	3
<b><i>Conversions</i></b> .....	4
<b><i>Details</i></b> .....	6
<b><i>Harmonies</i></b> .....	12
<b><i>Previews</i></b> .....	24
<b><i>Color Blindness Simulation</i></b> .....	28
<b><i>CSS Examples</i></b> .....	31

# Color

**YUV(176.4530, -10.0833,  
60.9927)**

# Conversions

## Conversions Part 1

Format	Color
Hex	F6919C
RGB	246, 145, 156
RGB Percent	96%, 57%, 61%
CMY	0.0353, 0.4314, 0.3882
CMYK	0.00, 0.41, 0.37, 0.04
HSL	353°, 85%, 77%
HSV	353°, 41%, 96%
XYZ	54.1322, 42.2439, 36.7533
YIQ	176.4530, 56.6650, 24.8330

# Conversions

## Conversions Part 2

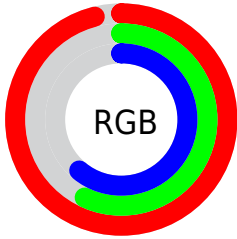
Format	Color
R <sub>Y</sub> B	246, 145, 156
Decimal	16159132
CIE Lab	71.04, 39.29, 10.81
CIE LCh	71, 40.747, 15.388
Yxy	42.2439, 0.4066, 0.3173
Android (android.graphics.Color)	4294349212 (0xFFFF6919C)
YUV	176.4530, -10.0833, 60.9927
Hunter-Lab	64.9953, 34.9242, 11.9697

# Details

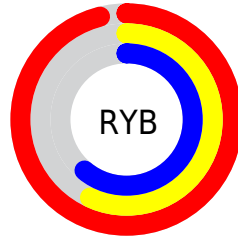
The YUV color **176.4530, -10.0833, 60.9927** is a light color, and the websafe version is hex **FF9999**. A complement of this color would be **214.5470, 10.0833, -60.9927**, and the grayscale version is **177.0000, 0.0000, 0.0000**.

A 20% lighter version of the original color is **217.5850, -3.7394, 32.8130**, and **121.8870, -8.3253, 57.1041** is the 20% darker color. If you saturate the color by 10%, you get **159.2700, -12.4581, 76.0622**, and if you desaturate by 10%, it is **193.6360, -7.7085, 45.9232**.

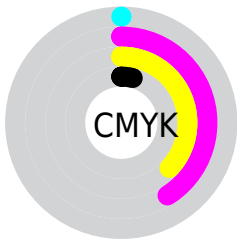
# Distribution



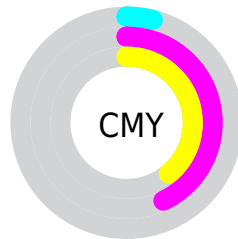
- Red (96%)
- Green (57%)
- Blue (61%)



- Red (96%)
- Yellow (57%)
- Blue (61%)



- Cyan (0%)
- Magenta (41%)
- Yellow (37%)
- Black (4%)



- Cyan (4%)
- Magenta (43%)
- Yellow (39%)

# Brightness & Saturation Gradients

These gradients show how the YUV color 176.4530, -10.0833, 60.9927 changes by changing the brightness by 10 percent. The first figure shows a shift by +10% for each color and the second figure -10%.

Similar to the brightness gradients but the following saturation gradients show a change of the YUV color 176.4530, -10.0833, 60.9927 by changing the saturation by 10% instead.



176.4530,  
-10.0833, 60.9927

176.4530,  
-10.0833, 60.9927

255.0000, 0.0000,  
0.0000

148.6700, -9.2043,  
59.0484

217.5850, -3.7394,  
32.8130

121.8870, -8.3253,  
57.1041

237.9140, 0.5354,  
14.9844

95.8050, -7.2989,  
54.5450

69.5490, -5.6937,  
53.0155

42.3470, -2.6361,  
52.3157

24.2490, -4.0668,  
44.5086

15.3630, -7.0810,

31.2536

■ 0.5980, -0.2948,  
1.2296

■ 0.0000, 0.0000,  
0.0000

■ 176.4530,  
-10.0833, 60.9927

■ 176.4530,  
-10.0833, 60.9927

■ 159.2700,  
-12.4581, 76.0622

■ 193.6360, -7.7085,  
45.9232

■ 142.6740,  
-15.1223, 90.6169

■ 210.2320, -5.0444,  
31.3685

■ 125.4910,  
-17.4971, 105.6864

■ 227.4150, -2.6696,  
16.2990

■ 108.8950,  
-20.1612, 120.2411

■ 244.0110, -0.0054,  
1.7444

■ 91.7120, -22.5360,  
135.3106

■ 252.3090, 1.3267,  
-5.5330

■ 76.6320, -24.4686,  
148.5357

# Harmonies

## Analogous

The Analogous color harmony consists of three colors that are next to each other on the color wheel.



178.6700, 7.5577, 49.4014



176.4530, -10.0833, 60.9927



174.9950, -25.6335, 55.2554

# Triad

The Triadic color harmony groups three colors that are evenly spaced from another and form a triangle on the color wheel.



176.4530, -10.0833, 60.9927



164.4120, -21.8951, -24.0403



160.1680, 41.8222, -67.6763

# Complementary

The Complementary color scheme is a pair of colors which are on the opposite of each other on the color wheel.



176.4530, -10.0833, 60.9927



214.5470, 10.0833, -60.9927

# Split Complementary

Split-complementary colors differ from the complementary color scheme. The scheme consists of three colors, the original color and two neighbors of the complement color.



137.8810, 43.4427, -120.9216



176.4530, -10.0833, 60.9927



156.5720, -1.2680, -60.1376

# Square

The Square scheme is like the rectangle color scheme, but the four colors are evenly spaced on the color wheel.



176.4530, -10.0833, 60.9927



169.5210, -33.7809, 8.3131



137.5600, 26.8389, -115.3781



173.1570, 35.4186, -20.3087



# Rectangle

The Rectangle color scheme consists of four colors that form a rectangle on the color wheel.



176.4530, -10.0833, 60.9927



173.3820, -32.7263, 43.5150



137.5600, 26.8389, -115.3781



153.1010, 43.3342, -86.0346

# Sweetspot

The Sweet Spot groups the original color and five complimentary colors.



176.4530, -10.0833, 60.9927



233.7250, -2.8224, 18.6582



183.1250, 30.9974, 44.6174



115.6100, -1.7797, 10.8660



0.0000, 0.0000, 0.0000



128.0000, 0.0000, 0.0000



# Same Dimension

The Same Dimension uses a secret algorithm to generate beautiful new colors.



176.4530, -10.0833, 60.9927



168.9710, -12.3107, 75.4474



198.0920, -26.1744, 42.0153



113.7020, -1.3321, 7.2773



57.8940, -18.6817, 112.3490



18.3250, -6.0762, 35.6720



# Inverse Universe

The Inverse Universe completely reimagines the original color for something new.



176.4530, -10.0833, 60.9927



168.9710, -12.3107, 75.4474



192.9080, 26.1744, -42.0153



113.7020, -1.3321, 7.2773



57.8940, -18.6817, 112.3490



18.3250, -6.0762, 35.6720



# Previews

## White Background



This preview shows how the YUV color 176.4530, -10.0833, 60.9927 looks on a white background.

## Color Contrast Check

Large Text (above 18pt) WCAG AA × Fail

Any Text WCAG AA × Fail

Large Text (above 18pt) WCAG AAA × Fail

Any Text WCAG AAA × Fail



# Black Background



This preview shows how the YUV color 176.4530, -10.0833, 60.9927 looks on a black background.

## Color Contrast Check

Large Text (above 18pt) WCAG AA ✓ Pass

Any Text WCAG AA ✓ Pass

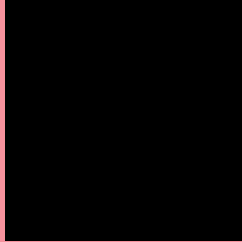
Large Text (above 18pt) WCAG AAA ✓ Pass

Any Text WCAG AAA ✓ Pass

If you want to check with other color combinations, try the [Color Contrast Checker](#).

# YUV 176.4530, -10.0833, 60.9927

## Background



This preview shows how black text looks on a background with the YUV color 176.4530, -10.0833, 60.9927.



This preview shows how white text looks on a background with the YUV color 176.4530, -10.0833, 60.9927.

60.9927.

# Color Blindness Simulation

Color vision deficiency is a very complex topic, and I could not describe the different causes any better than Wikipedia does, so if you want to learn more, you should check out their [article about color blindness](#).

## Dichromacy



### Original Color

176.4530, -10.0833, 60.9927

### Protanopia

174.8540, -1.9000, 2.7590

### Deuteranopia

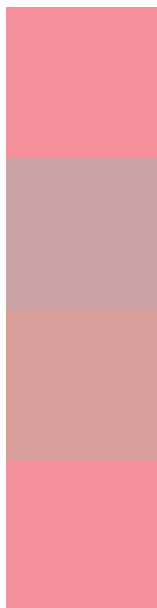
175.4450, -11.5584, 20.6577



## Tritanopia

176.4530, -10.0833, 60.9927

# Trichromacy



## Original Color

176.4530, -10.0833, 60.9927

## Protanomaly

175.3020, -4.5859, 24.2911

## Deuteranomaly

175.9460, -11.3124, 35.1274

## Tritanomaly

176.4530, -10.0833, 60.9927

# Monochromacy



## Original Color

176.4530, -10.0833, 60.9927

## Achromatopsia

176.0000, 0.0000, 0.0000

## Achromatomaly

176.2200, -3.5595, 21.7321

# CSS Examples

## Text

The CSS property to change the color of the text to YUV 176.4530, -10.0833, 60.9927 is called "color". The color property can be set on classes, ids or directly on the HTML element.

This example shows how text in the color `rgb(246, 145, 156)` looks like.

```
.text, #text, p{  
    color:rgb(246, 145, 156)  
}
```

If you want to add a text shadow in that color use the text-shadow property, you can generate a text shadow directly with our [CSS Text Shadow Generator](#).

Here you see how black text with a 4 pixel rgb(246, 145, 156) colored shadow looks like.

```
.shadow{ text-shadow: 4px 4px 2px rgb(246, 145, 156) }
```

## Border

The CSS property to change the border of an element to YUV 176.4530, -10.0833, 60.9927 is called "border".

The border property can be set on classes, ids or directly on the HTML element.

This example shows the color as border, it can be applied via the CSS property "border" or "border-color".

```
.border, #border, table{ border:4px solid rgb(246, 145, 156) }
```



If only the border color should be changed use the property border-color.

```
.border{ border-color:rgb(246, 145, 156) }
```

If you want to add a box shadow in that color use:

Here you see how a box with a 4 pixel rgb(246, 145, 156) colored shadow looks like.

```
.boxshadow{ -moz-box-shadow:4px 4px 4px  
4px rgb(246, 145, 156); -webkit-box-  
shadow:4px 4px 4px 4px rgb(246, 145, 156);  
box-shadow:4px 4px 4px 4px rgb(246, 145,  
156) }
```

# Background

The CSS property to change the background color of an element to YUV 176.4530, -10.0833, 60.9927 is called "background". The background property can be set on classes, ids or directly on the HTML element.

```
.background, #background, body{  
background: rgb(246, 145, 156) }
```

If only the background color should be changed can be used:

```
.background{ background-color: rgb(246,  
145, 156) }
```

This example shows the color as background, it is applied via the CSS property "background".

To optimize and compress your CSS code, you can use our [online CSS compressor and optimizer](#) based on csstidy. If you want to create a linear or radial gradient as background or border, check our [CSS Gradient Generator](#).

Hey! You found this booklet interesting? Support Converting Colors with the new Membership Option!

The pro membership hides all ads, plus gives you double the colors in the color bucket, and more awesome pro features!

**[Learn more, Memberships starting at \\$2.50/m!](#)**

**Follow me  
on Twitter!**

@ConvertingColor