

Converting Colors

YUV(176.5110, -15.0419,
17.9689)

Have a look what the booklet for
YUV(176.5110, -15.0419, 17.9689)
contains.

YUV(176.5110, -15.0419, 17.9689)	3
<i>Conversions</i>	4
<i>Details</i>	6
<i>Harmonies</i>	12
<i>Previews</i>	24
<i>Color Blindness Simulation</i>	28
<i>CSS Examples</i>	31

Color

**YUV(176.5110, -15.0419,
17.9689)**

Conversions

Conversions Part 1

Format	Color
Hex	C5AC92
RGB	197, 172, 146
RGB Percent	77%, 67%, 57%
CMY	0.2275, 0.3255, 0.4275
CMYK	0.00, 0.13, 0.26, 0.23
HSL	31°, 31%, 67%
HSV	31°, 26%, 77%
XYZ	42.9668, 43.4507, 33.3164
YIQ	176.5110, 23.2460, -2.7860

Conversions

Conversions Part 2

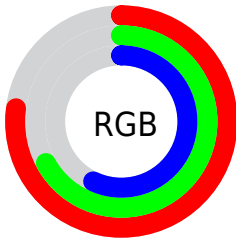
Format	Color
R _Y B	195, 197, 146
Decimal	12954770
CIE Lab	71.86, 5.03, 16.71
CIE LCh	72, 17.453, 73.243
Yxy	43.4507, 0.3589, 0.3629
Android (android.graphics.Color)	4291144850 (0xFFC5AC92)
YUV	176.5110, -15.0419, 17.9689
Hunter-Lab	65.9171, 0.9967, 16.1752

Details

The YUV color $176.5110, -15.0419, 17.9689$ is a light color, and the websafe version is hex $CC9999$. A complement of this color would be $166.4890, 15.0419, -17.9689$, and the grayscale version is $177.0000, 0.0000, 0.0000$.

A 20% lighter version of the original color is $231.9950, -15.7735, 19.2984$, and $124.0270, -14.3103, 16.6393$ is the 20% darker color. If you saturate the color by 10%, you get $168.3610, -20.8840, 25.1164$, and if you desaturate by 10%, it is $184.6610, -9.1999, 10.8213$.

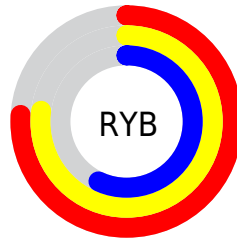
Distribution



Red (77%)

Green (67%)

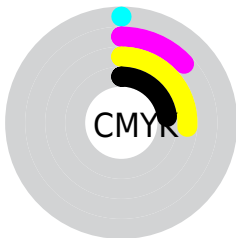
Blue (57%)



Red (76%)

Yellow (77%)

Blue (57%)

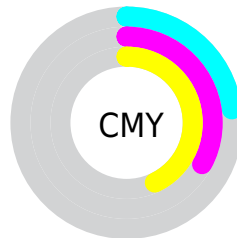


Cyan (0%)

Magenta (13%)

Yellow (26%)

Black (23%)



Cyan (23%)

Magenta (33%)

Yellow (43%)

Brightness & Saturation Gradients

These gradients show how the YUV color 176.5110, -15.0419, 17.9689 changes by changing the brightness by 10 percent. The first figure shows a shift by +10% for each color and the second figure -10%.

Similar to the brightness gradients but the following saturation gradients show a change of the YUV color 176.5110, -15.0419, 17.9689 by changing the saturation by 10% instead.

■ 176.5110,
-15.0419, 17.9689

■ 176.5110,
-15.0419, 17.9689

255.0000, 0.0000,
0.0000

■ 149.3260,
-14.4577, 17.2541

■ 231.9950,
-15.7735, 19.2984

■ 124.0270,
-14.3103, 16.6393

■ 251.9220,
-11.7935, 2.6994

■ 98.6570, -13.1419,
15.2098

■ 74.4720, -12.5577,
14.4951

■ 51.9880, -11.8261,
13.1655

■ 29.9340, -13.2785,
12.3359

■ 7.7410, -3.8163,

10.7511

■ 0.0000, 0.0000,
0.0000

■ 176.5110,
-15.0419, 17.9689

■ 176.5110,
-15.0419, 17.9689

■ 168.3610,
-20.8840, 25.1164

■ 184.6610, -9.1999,
10.8213

■ 160.9120,
-26.5786, 31.6492

■ 192.1100, -3.5052,
4.2885

■ 152.7620,
-32.4207, 38.7967

■ 200.2600, 2.3368,
-2.8590

■ 144.6120,
-38.2627, 45.9443

■ 208.4100, 8.1789,
-10.0066

■ 137.1630,
-43.9574, 52.4770

■ 215.9730, 14.3103,
-16.6393

■ 129.0130,
-49.7994, 59.6246

■ 222.9830, 15.7844,
-22.7871

■ 120.8630,
-55.6415, 66.7721

■ 228.8530, 12.8905,
-27.9351

■ 117.6030,
-57.9783, 69.6312

■ 234.1360, 10.2860,
-32.5683

■ 237.6580, 8.5496,
-35.6571

Harmonies

Analogous

The Analogous color harmony consists of three colors that are next to each other on the color wheel.



177.5920, -11.1379, 25.7908



176.5110, -15.0419, 17.9689



174.5480, -14.5672, 5.6584

Triad

The Triadic color harmony groups three colors that are evenly spaced from another and form a triangle on the color wheel.



176.5110, -15.0419, 17.9689



169.8220, 6.4968, -30.5389



178.6880, 10.0138, 8.1666

Complementary

The Complementary color scheme is a pair of colors which are on the opposite of each other on the color wheel.



176.5110, -15.0419, 17.9689



166.4890, 15.0419, -17.9689

Split Complementary

Split-complementary colors differ from the complementary color scheme. The scheme consists of three colors, the original color and two neighbors of the complement color.



176.2560, 15.1568, -8.1175



176.5110, -15.0419, 17.9689



170.8310, 12.9013, -31.4238

Square

The Square scheme is like the rectangle color scheme, but the four colors are evenly spaced on the color wheel.



176.5110, -15.0419, 17.9689



171.1730, -2.5503, -22.0767



173.3960, 16.0738, -22.2723



179.3430, 3.2819, 20.7472

Rectangle

The Rectangle color scheme consists of four colors that form a rectangle on the color wheel.



176.5110, -15.0419, 17.9689



173.1770, -11.9193, -3.6632



173.3960, 16.0738, -22.2723



177.6380, 12.5035, 2.9485

Sweetspot

The Sweet Spot groups the original color and five complimentary colors.



176.5110, -15.0419, 17.9689



246.8500, -5.8420, 7.1476



164.2130, 3.8390, 28.7542



122.4090, -3.6526, 4.9033



0.0000, 0.0000, 0.0000



128.0000, 0.0000, 0.0000

Same Dimension

The Same Dimension uses a secret algorithm to generate beautiful new colors.



176.5110, -15.0419, 17.9689



223.1010, -23.2208, 27.9754



191.1860, -22.2767, 5.0989



95.6260, -2.7736, 2.9590



97.4580, -48.0468, 57.4803



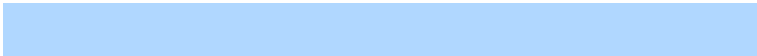
21.3300, -10.5157, 12.8656

Inverse Universe

The Inverse Universe completely reimagines the original color for something new.



166.4890, 15.0419, -17.9689



207.8990, 23.2208, -27.9754



151.8140, 22.2767, -5.0989



93.3740, 2.7736, -2.9590



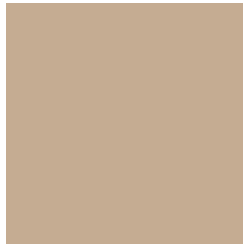
65.5420, 48.0468, -57.4803



14.6700, 10.5157, -12.8656

Previews

White Background



This preview shows how the YUV color 176.5110, -15.0419, 17.9689 looks on a white background.

Color Contrast Check

Large Text (above 18pt) WCAG AA × Fail

Any Text WCAG AA × Fail

Large Text (above 18pt) WCAG AAA × Fail

Any Text WCAG AAA × Fail

Black Background



This preview shows how the YUV color 176.5110, -15.0419, 17.9689 looks on a black background.

Color Contrast Check

Large Text (above 18pt) WCAG AA ✓ Pass

Any Text WCAG AA ✓ Pass

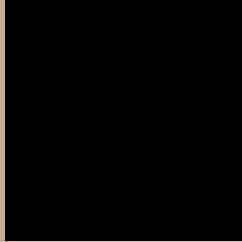
Large Text (above 18pt) WCAG AAA ✓ Pass

Any Text WCAG AAA ✓ Pass

If you want to check with other color combinations, try the [Color Contrast Checker](#).

YUV 176.5110, -15.0419, 17.9689

Background



This preview shows how black text looks on a background with the YUV color 176.5110, -15.0419, 17.9689.



This preview shows how white text looks on a background with the YUV color 176.5110, -15.0419, 17.9689.

Color Blindness Simulation

Color vision deficiency is a very complex topic, and I could not describe the different causes any better than Wikipedia does, so if you want to learn more, you should check out their [article about color blindness](#).

Dichromacy



Original Color

176.5110, -15.0419, 17.9689

Protanopia

175.7980, -13.7044, 8.9472

Deuteranopia

176.9570, -14.7688, 23.7167



Tritanopia

178.6480, 0.6665, 19.6027

Trichromacy



Original Color

176.5110, -15.0419, 17.9689

Protanomaly

176.2930, -14.4414, 12.0210

Deuteranomaly

176.6470, -14.6160, 21.3576

Tritanomaly

178.1550, -5.0064, 19.1581

Monochromacy



Original Color

176.5110, -15.0419, 17.9689

Achromatopsia

177.0000, 0.0000, 0.0000

Achromatomaly

176.6650, -5.2578, 6.4328

CSS Examples

Text

The CSS property to change the color of the text to YUV 176.5110, -15.0419, 17.9689 is called "color". The color property can be set on classes, ids or directly on the HTML element.

This example shows how text in the color `rgb(197, 172, 146)` looks like.

```
.text, #text, p{  
    color:rgb(197, 172, 146)  
}
```

If you want to add a text shadow in that color use the text-shadow property, you can generate a text shadow directly with our [CSS Text Shadow Generator](#).

Here you see how black text with a 4 pixel rgb(197, 172, 146) colored shadow looks like.

```
.shadow{ text-shadow: 4px 4px 2px rgb(197, 172, 146) }
```

Border

The CSS property to change the border of an element to YUV 176.5110, -15.0419, 17.9689 is called "border".

The border property can be set on classes, ids or directly on the HTML element.

This example shows the color as border, it can be applied via the CSS property "border" or "border-color".

```
.border, #border, table{ border:4px solid rgb(197, 172, 146) }
```


If only the border color should be changed use the property border-color.

```
.border{ border-color:rgb(197, 172, 146) }
```

If you want to add a box shadow in that color use:

Here you see how a box with a 4 pixel rgb(197, 172, 146) colored shadow looks like.

```
.boxshadow{ -moz-box-shadow:4px 4px 4px  
4px rgb(197, 172, 146); -webkit-box-  
shadow:4px 4px 4px 4px rgb(197, 172, 146);  
box-shadow:4px 4px 4px 4px rgb(197, 172,  
146) }
```

Background

The CSS property to change the background color of an element to YUV 176.5110, -15.0419, 17.9689 is called "background". The background property can be set on classes, ids or directly on the HTML element.

```
.background, #background, body{  
background: rgb(197, 172, 146) }
```

If only the background color should be changed can be used:

```
.background{ background-color: rgb(197,  
172, 146) }
```

This example shows the color as background, it is applied via the CSS property "background".

To optimize and compress your CSS code, you can use our [online CSS compressor and optimizer](#) based on csstidy. If you want to create a linear or radial gradient as background or border, check our [CSS Gradient Generator](#).

Hey! You found this booklet interesting? Support Converting Colors with the new Membership Option!

The pro membership hides all ads, plus gives you double the colors in the color bucket, and more awesome pro features!

[Learn more, Memberships starting at \\$2.50/m!](#)

**Follow me
on Twitter!**

@ConvertingColor