

Converting Colors

YUV(176.6240, 3.6364, 0.3298)

Have a look what the booklet for
YUV(176.6240, 3.6364, 0.3298)
contains.

YUV(176.6240, 3.6364, 0.3298)	3
<i>Conversions</i>	4
<i>Details</i>	6
<i>Harmonies</i>	12
<i>Previews</i>	24
<i>Color Blindness Simulation</i>	28
<i>CSS Examples</i>	31

Color

**YUV(176.6240, 3.6364,
0.3298)**

Conversions

Conversions Part 1

Format	Color
Hex	B1AFB8
RGB	177, 175, 184
RGB Percent	69%, 69%, 72%
CMY	0.3059, 0.3137, 0.2784
CMYK	0.04, 0.05, 0.00, 0.28
HSL	253°, 6%, 70%
HSV	253°, 5%, 72%
XYZ	42.1132, 43.4677, 51.5179
YIQ	176.6240, -1.6970, 3.2230

Conversions

Conversions Part 2

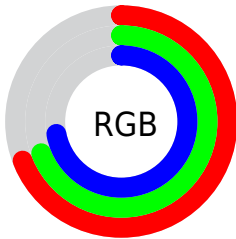
Format	Color
RYB	177, 175, 184
Decimal	11644856
CIELab	71.87, 2.42, -4.34
CIElCh	72, 4.975, 299.164
Yxy	43.4677, 0.3072, 0.3171
Android (android.graphics.Color)	4289834936 (0xFFB1AFB8)
YUV	176.6240, 3.6364, 0.3298
Hunter-Lab	65.9301, -1.3599, -0.1783

Details

The YUV color **176.6240, 3.6364, 0.3298** is a light color, and the websafe version is hex **999999**. A complement of this color would be **182.3760, -3.6364, -0.3298**, and the grayscale version is **177.0000, 0.0000, 0.0000**.

A 20% lighter version of the original color is **232.0370, 3.9258, 0.8446**, and **124.2110, 3.3470, -0.1850** is the 20% darker color. If you saturate the color by 10%, you get **161.8720, 10.9091, 0.9893**, and if you desaturate by 10%, it is **191.3760, -3.6364, -0.3298**.

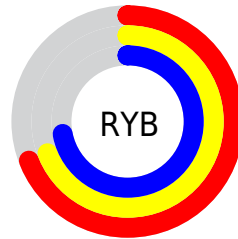
Distribution



Red (69%)

Green (69%)

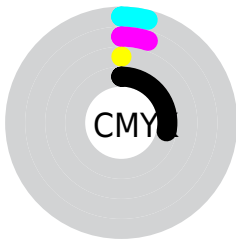
Blue (72%)



Red (69%)

Yellow (69%)

Blue (72%)

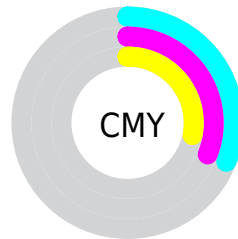


Cyan (4%)

Magenta (5%)

Yellow (0%)

Black (28%)



Cyan (31%)

Magenta (31%)

Yellow (28%)

Brightness & Saturation Gradients

These gradients show how the YUV color 176.6240, 3.6364, 0.3298 changes by changing the brightness by 10 percent. The first figure shows a shift by +10% for each color and the second figure -10%.

Similar to the brightness gradients but the following saturation gradients show a change of the YUV color 176.6240, 3.6364, 0.3298 by changing the saturation by 10% instead.

■ 176.6240, 3.6364,
0.3298

■ 176.6240, 3.6364,
0.3298

255.0000, 0.0000,
0.0000

■ 149.6240, 3.6364,
0.3298

■ 232.0370, 3.9258,
0.8446

■ 124.2110, 3.3470,
-0.1850

■ 99.5100, 3.1996,
0.4297

■ 75.5100, 3.1996,
0.4297

■ 52.5100, 3.1996,
0.4297

■ 31.3960, 2.7628,
0.5297

■ 7.1510, 4.3626,

0.7446

0.0000, 0.0000,
0.0000

176.6240, 3.6364,
0.3298

176.6240, 3.6364,
0.3298

161.8720, 10.9091,
0.9893

191.3760, -3.6364,
-0.3298

146.2340, 18.6186,
1.5488

207.0140,
-11.3459, -0.8893

131.4820, 25.8914,
2.2083

221.7660,
-18.6186, -1.5488

116.1430, 33.4535,
3.3826

237.1050,
-26.1808, -2.7231

101.0920, 40.8736,
3.4273

245.1120,
-30.1282, 3.4098

■ 86.3400, 48.1464,
4.0868

■ 246.9060,
-31.0127, 7.0984

■ 71.0010, 55.7085,
5.2611

■ 56.2490, 62.9812,
5.9206

■ 40.6110, 70.6908,
6.4802

Harmonies

Analogous

The Analogous color harmony consists of three colors that are next to each other on the color wheel.



176.4170, 4.2314, -3.8737



176.6240, 3.6364, 0.3298



177.1900, 1.8783, 4.2184

Triad

The Triadic color harmony groups three colors that are evenly spaced from another and form a triangle on the color wheel.



176.6240, 3.6364, 0.3298



176.3060, -4.0949, 6.7476



174.7710, 0.6059, -7.6922

Complementary

The Complementary color scheme is a pair of colors which are on the opposite of each other on the color wheel.



176.6240, 3.6364, 0.3298



182.3760, -3.6364, -0.3298

Split Complementary

Split-complementary colors differ from the complementary color scheme. The scheme consists of three colors, the original color and two neighbors of the complement color.



174.8100, -1.8783, -4.2184



176.6240, 3.6364, 0.3298



176.1700, -4.5208, 3.3589

Square

The Square scheme is like the rectangle color scheme, but the four colors are evenly spaced on the color wheel.



176.6240, 3.6364, 0.3298



176.7730, -2.3531, 8.0921



175.3760, -3.6364, -0.3298



174.9280, 2.5005, -8.7069

Rectangle

The Rectangle color scheme consists of four colors that form a rectangle on the color wheel.



176.6240, 3.6364, 0.3298



177.1580, 0.4151, 6.8774



175.3760, -3.6364, -0.3298



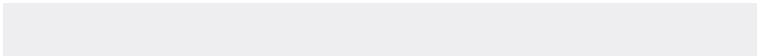
174.8420, -0.4151, -6.8774

Sweetspot

The Sweet Spot groups the original color and five complimentary colors.



176.6240, 3.6364, 0.3298



237.6410, 1.1630, 0.3148



180.1350, 1.9054, -4.5034



119.1140, 0.4368, -0.1000



247.0000, 0.0000, 0.0000



120.0000, 0.0000, 0.0000

Same Dimension

The Same Dimension uses a secret algorithm to generate beautiful new colors.



176.6240, 3.6364, 0.3298



227.9060, 5.9623, 0.9594



177.8200, 3.0467, 2.7889



86.3960, 2.7628, 0.5297



28.2490, 62.9812, 5.9206



4.9860, 11.3459, 0.8893

Inverse Universe

The Inverse Universe completely reimagines the original color for something new.



178.4890, 1.7309, 4.8331



230.8530, 3.0305, 8.0219



181.1800, -3.0467, -2.7889



87.6630, 1.1521, 3.8035



60.4380, 29.8571, 83.8079



10.8800, 5.4822, 15.0142

Previews

White Background



This preview shows how the YUV color 176.6240, 3.6364, 0.3298 looks on a white background.

Color Contrast Check

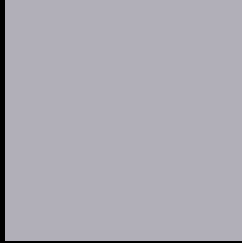
Large Text (above 18pt) WCAG AA × Fail

Any Text WCAG AA × Fail

Large Text (above 18pt) WCAG AAA × Fail

Any Text WCAG AAA × Fail

Black Background



This preview shows how the YUV color 176.6240, 3.6364, 0.3298 looks on a black background.

Color Contrast Check

Large Text (above 18pt) WCAG AA ✓ Pass

Any Text WCAG AA ✓ Pass

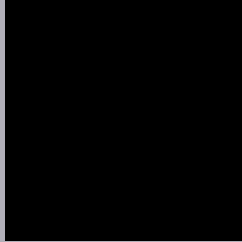
Large Text (above 18pt) WCAG AAA ✓ Pass

Any Text WCAG AAA ✓ Pass

If you want to check with other color combinations, try the [Color Contrast Checker](#).

YUV 176.6240, 3.6364, 0.3298

Background



This preview shows how black text looks on a background with the YUV color 176.6240, 3.6364, 0.3298.



This preview shows how white text looks on a background with the YUV color 176.6240, 3.6364,

0.3298.

Color Blindness Simulation

Color vision deficiency is a very complex topic, and I could not describe the different causes any better than Wikipedia does, so if you want to learn more, you should check out their [article about color blindness](#).

Dichromacy



Original Color

176.6240, 3.6364, 0.3298

Protanopia

176.6240, 3.6364, 0.3298

Deuteranopia

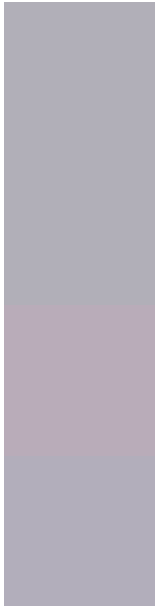
177.9780, 3.4618, 9.6663



Tritanopia

176.7920, 5.5255, 1.0594

Trichromacy



Original Color

176.6240, 3.6364, 0.3298

Protanomaly

176.6240, 3.6364, 0.3298

Deuteranomaly

177.3690, 3.7621, 6.6924

Tritanomaly

176.6780, 5.0887, 1.1594

Monochromacy



Original Color

176.6240, 3.6364, 0.3298

Achromatopsia

177.0000, 0.0000, 0.0000

Achromatomaly

176.7550, 1.5998, 0.2149

CSS Examples

Text

The CSS property to change the color of the text to YUV 176.6240, 3.6364, 0.3298 is called "color". The color property can be set on classes, ids or directly on the HTML element.

This example shows how text in the color `rgb(177, 175, 184)` looks like.

```
.text, #text, p{  
    color:rgb(177, 175, 184)  
}
```

If you want to add a text shadow in that color use the text-shadow property, you can generate a text shadow directly with our [CSS Text Shadow Generator](#).

Here you see how black text with a 4 pixel rgb(177, 175, 184) colored shadow looks like.

```
.shadow{ text-shadow: 4px 4px 2px rgb(177, 175, 184) }
```

Border

The CSS property to change the border of an element to YUV 176.6240, 3.6364, 0.3298 is called "border". The border property can be set on classes, ids or directly on the HTML element.

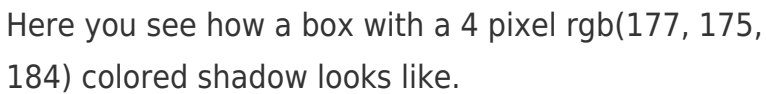
This example shows the color as border, it can be applied via the CSS property "border" or "border-color".

```
.border, #border, table{ border:4px solid rgb(177, 175, 184) }
```


If only the border color should be changed use the property `border-color`.

```
.border{ border-color:rgb(177, 175, 184) }
```

If you want to add a box shadow in that color use:



Here you see how a box with a 4 pixel `rgb(177, 175, 184)` colored shadow looks like.

```
.boxshadow{ -moz-box-shadow:4px 4px 4px 4px rgb(177, 175, 184); -webkit-box-shadow:4px 4px 4px 4px rgb(177, 175, 184); box-shadow:4px 4px 4px 4px rgb(177, 175, 184) }
```

Background

The CSS property to change the background color of an element to YUV 176.6240, 3.6364, 0.3298 is called "background". The background property can be set on classes, ids or directly on the HTML element.

```
.background, #background, body{  
background: rgb(177, 175, 184) }
```

If only the background color should be changed can be used:

```
.background{ background-color: rgb(177,  
175, 184) }
```

This example shows the color as background, it is applied via the CSS property "background".

To optimize and compress your CSS code, you can use our [online CSS compressor and optimizer](#) based on csstidy. If you want to create a linear or radial gradient as background or border, check our [CSS Gradient Generator](#).

Hey! You found this booklet interesting? Support Converting Colors with the new Membership Option!

The pro membership hides all ads, plus gives you double the colors in the color bucket, and more awesome pro features!

[Learn more, Memberships starting at \\$2.50/m!](#)

**Follow me
on Twitter!**

@ConvertingColor