

Converting Colors

YUV(176.6310, -0.3111, 6.4626)

Have a look what the booklet for
YUV(176.6310, -0.3111, 6.4626)
contains.

YUV(176.6310, -0.3111, 6.4626)	3
<i>Conversions</i>	4
<i>Details</i>	6
<i>Harmonies</i>	12
<i>Previews</i>	24
<i>Color Blindness Simulation</i>	28
<i>CSS Examples</i>	31

Color

**YUV(176.6310, -0.3111,
6.4626)**

Conversions

Conversions Part 1

Format	Color
Hex	B8ADB0
RGB	184, 173, 176
RGB Percent	72%, 68%, 69%
CMY	0.2784, 0.3216, 0.3098
CMYK	0.00, 0.06, 0.04, 0.28
HSL	344°, 7%, 70%
HSV	344°, 6%, 72%
XYZ	42.5472, 43.2121, 47.1726
YIQ	176.6310, 5.5930, 3.2650

Conversions

Conversions Part 2

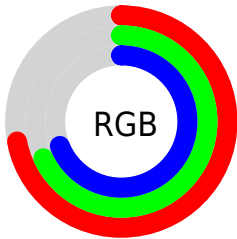
Format	Color
RYB	184, 173, 176
Decimal	12103088
CIELab	71.70, 4.47, -0.13
CIELCh	72, 4.475, 358.328
Yxy	43.2121, 0.3201, 0.3251
Android (android.graphics.Color)	4290293168 (0xFFB8ADB0)
YUV	176.6310, -0.3111, 6.4626
Hunter-Lab	65.7359, 0.4954, 3.4682

Details

The YUV color $176.6310, -0.3111, 6.4626$ is a light color, and the websafe version is hex 999999 . A complement of this color would be $180.3690, 0.3111, -6.4626$, and the grayscale version is $177.0000, 0.0000, 0.0000$.

A 20% lighter version of the original color is $232.0440, -0.0217, 6.9774$, and $124.3320, -0.1637, 5.8478$ is the 20% darker color. If you saturate the color by 10%, you get $164.5830, -0.7804, 17.0287$, and if you desaturate by 10%, it is $188.6790, 0.1583, -4.1035$.

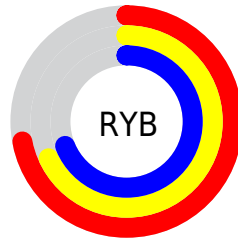
Distribution



Red (72%)

Green (68%)

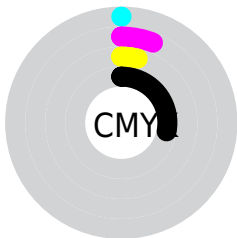
Blue (69%)



Red (72%)

Yellow (68%)

Blue (69%)

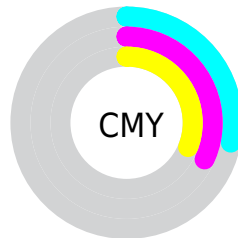


Cyan (0%)

Magenta (6%)

Yellow (4%)

Black (28%)



Cyan (28%)

Magenta (32%)

Yellow (31%)

Brightness & Saturation Gradients

These gradients show how the YUV color 176.6310, -0.3111, 6.4626 changes by changing the brightness by 10 percent. The first figure shows a shift by +10% for each color and the second figure -10%.

Similar to the brightness gradients but the following saturation gradients show a change of the YUV color 176.6310, -0.3111, 6.4626 by changing the saturation by 10% instead.

■ 176.6310, -0.3111,
6.4626

■ 176.6310, -0.3111,
6.4626

255.0000, 0.0000,
0.0000

■ 149.6310, -0.3111,
6.4626

■ 232.0440, -0.0217,
6.9774

■ 124.3320, -0.1637,
5.8478

■ 99.3320, -0.1637,
5.8478

■ 75.3320, -0.1637,
5.8478

■ 52.9190, -0.4531,
5.3330

■ 31.6200, -0.3057,
4.7183

■ 7.3430, -0.1691,

7.5922

■ 0.0000, 0.0000,
0.0000

■ 176.6310, -0.3111,
6.4626

■ 176.6310, -0.3111,
6.4626

■ 164.5830, -0.7804,
17.0287

■ 188.6790, 0.1583,
-4.1035

■ 151.8340, -1.3972,
28.2096

■ 201.4280, 0.7750,
-15.2844

■ 139.7860, -1.8665,
38.7757

■ 213.4760, 1.2443,
-25.8505

■ 127.0370, -2.4832,
49.9566

■ 226.2250, 1.8611,
-37.0313

■ 114.9890, -2.9526,
60.5226

■ 232.4030, 5.2243,
-42.4494

■ 102.9410, -3.4219,
71.0887

■ 233.7710, 10.4659,
-43.6492

■ 90.1920, -4.0387,
82.2696

■ 78.1440, -4.5080,
92.8357

■ 65.5090, -4.6879,
103.9166

Harmonies

Analogous

The Analogous color harmony consists of three colors that are next to each other on the color wheel.



176.7770, 1.5889, 3.7036



176.6310, -0.3111, 6.4626



176.4740, -2.2057, 7.4773

Triad

The Triadic color harmony groups three colors that are evenly spaced from another and form a triangle on the color wheel.



176.6310, -0.3111, 6.4626



175.3760, -3.6364, -0.3298



174.8790, 3.5107, -6.0329

Complementary

The Complementary color scheme is a pair of colors which are on the opposite of each other on the color wheel.



176.6310, -0.3111, 6.4626



180.3690, 0.3111, -6.4626

Split Complementary

Split-complementary colors differ from the complementary color scheme. The scheme consists of three colors, the original color and two neighbors of the complement color.



174.5260, 2.2057, -7.4773



176.6310, -0.3111, 6.4626



174.8100, -1.8783, -4.2184

Square

The Square scheme is like the rectangle color scheme, but the four colors are evenly spaced on the color wheel.



176.6310, -0.3111, 6.4626



175.6970, -3.7946, 3.7737



174.3690, 0.3111, -6.4626



175.4170, 4.2314, -3.8737

Rectangle

The Rectangle color scheme consists of four colors that form a rectangle on the color wheel.



176.6310, -0.3111, 6.4626



176.5340, -3.2213, 6.5477



174.3690, 0.3111, -6.4626



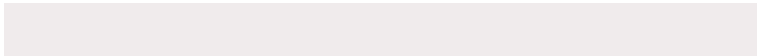
175.1670, 3.3687, -7.1625

Sweetspot

The Sweet Spot groups the original color and five complimentary colors.



176.6310, -0.3111, 6.4626



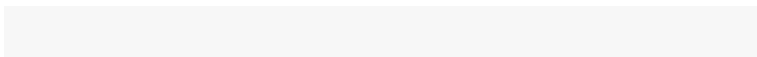
236.6090, -0.3002, 2.9739



176.6460, 3.6255, 3.8185



118.0110, -0.0054, 1.7444



247.0000, 0.0000, 0.0000



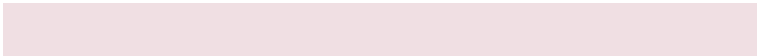
120.0000, 0.0000, 0.0000

Same Dimension

The Same Dimension uses a secret algorithm to generate beautiful new colors.



176.6310, -0.3111, 6.4626



228.5390, -0.7587, 10.0513



177.4630, -2.2003, 5.7329



86.6200, -0.3057, 4.7183



51.4320, -4.6500, 91.7061



9.2840, -0.6330, 16.4139

Inverse Universe

The Inverse Universe completely reimagines the original color for something new.



176.6310, -0.3111, 6.4626



228.5390, -0.7587, 10.0513



179.5370, 2.2003, -5.7329



86.6200, -0.3057, 4.7183



51.4320, -4.6500, 91.7061



9.2840, -0.6330, 16.4139

Previews

White Background



This preview shows how the YUV color 176.6310, -0.3111, 6.4626 looks on a white background.

Color Contrast Check

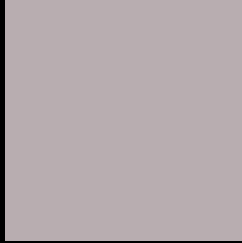
Large Text (above 18pt) WCAG AA × Fail

Any Text WCAG AA × Fail

Large Text (above 18pt) WCAG AAA × Fail

Any Text WCAG AAA × Fail

Black Background



This preview shows how the YUV color 176.6310, -0.3111, 6.4626 looks on a black background.

Color Contrast Check

Large Text (above 18pt) WCAG AA ✓ Pass

Any Text WCAG AA ✓ Pass

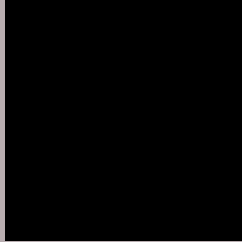
Large Text (above 18pt) WCAG AAA ✓ Pass

Any Text WCAG AAA ✓ Pass

If you want to check with other color combinations, try the [Color Contrast Checker](#).

YUV 176.6310, -0.3111, 6.4626

Background



This preview shows how black text looks on a background with the YUV color 176.6310, -0.3111, 6.4626.



This preview shows how white text looks on a background with the YUV color 176.6310, -0.3111,

6.4626.

Color Blindness Simulation

Color vision deficiency is a very complex topic, and I could not describe the different causes any better than Wikipedia does, so if you want to learn more, you should check out their [article about color blindness](#).

Dichromacy



Original Color

176.6310, -0.3111, 6.4626

Protanopia

176.1250, 0.4314, 1.6444

Deuteranopia

177.3760, -0.1854, 12.8252



Tritanopia

177.3690, 3.7621, 6.6924

Trichromacy



Original Color

176.6310, -0.3111, 6.4626

Protanomaly

176.1360, 0.4260, 3.3887

Deuteranomaly

177.0660, -0.0325, 10.4661

Tritanomaly

177.0270, 2.4517, 6.9923

Monochromacy



Original Color

176.6310, -0.3111, 6.4626

Achromatopsia

177.0000, 0.0000, 0.0000

Achromatomaly

177.3100, -0.1528, 2.3591

CSS Examples

Text

The CSS property to change the color of the text to YUV 176.6310, -0.3111, 6.4626 is called "color". The color property can be set on classes, ids or directly on the HTML element.

This example shows how text in the color `rgb(184, 173, 176)` looks like.

```
.text, #text, p{  
    color:rgb(184, 173, 176)  
}
```

If you want to add a text shadow in that color use the text-shadow property, you can generate a text shadow directly with our [CSS Text Shadow Generator](#).

Here you see how black text with a 4 pixel rgb(184, 173, 176) colored shadow looks like.

```
.shadow{ text-shadow: 4px 4px 2px rgb(184, 173, 176) }
```

Border

The CSS property to change the border of an element to YUV 176.6310, -0.3111, 6.4626 is called "border". The border property can be set on classes, ids or directly on the HTML element.

This example shows the color as border, it can be applied via the CSS property "border" or "border-color".

```
.border, #border, table{ border:4px solid rgb(184, 173, 176) }
```


If only the border color should be changed use the property `border-color`.

```
.border{ border-color:rgb(184, 173, 176) }
```

If you want to add a box shadow in that color use:

Here you see how a box with a 4 pixel `rgb(184, 173, 176)` colored shadow looks like.

```
.boxshadow{ -moz-box-shadow:4px 4px 4px  
4px rgb(184, 173, 176); -webkit-box-  
shadow:4px 4px 4px 4px rgb(184, 173, 176);  
box-shadow:4px 4px 4px 4px rgb(184, 173,  
176) }
```

Background

The CSS property to change the background color of an element to YUV 176.6310, -0.3111, 6.4626 is called "background". The background property can be set on classes, ids or directly on the HTML element.

```
.background, #background, body{  
background: rgb(184, 173, 176) }
```

If only the background color should be changed can be used:

```
.background{ background-color: rgb(184,  
173, 176) }
```

This example shows the color as background, it is applied via the CSS property "background".

To optimize and compress your CSS code, you can use our [online CSS compressor and optimizer](#) based on csstidy. If you want to create a linear or radial gradient as background or border, check our [CSS Gradient Generator](#).

Hey! You found this booklet interesting? Support Converting Colors with the new Membership Option!

The pro membership hides all ads, plus gives you double the colors in the color bucket, and more awesome pro features!

[Learn more, Memberships starting at \\$2.50/m!](#)

**Follow me
on Twitter!**

@ConvertingColor