

Converting Colors

YUV(176.7740, -3.8326,
15.9842)

Have a look what the booklet for
YUV(176.7740, -3.8326, 15.9842)
contains.

YUV(176.7740, -3.8326, 15.9842)	3
<i>Conversions</i>	4
<i>Details</i>	6
<i>Harmonies</i>	12
<i>Previews</i>	24
<i>Color Blindness Simulation</i>	28
<i>CSS Examples</i>	31

Color

**YUV(176.7740, -3.8326,
15.9842)**

Conversions

Conversions Part 1

Format	Color
Hex	C3A9A9
RGB	195, 169, 169
RGB Percent	76%, 66%, 66%
CMY	0.2353, 0.3373, 0.3373
CMYK	0.00, 0.13, 0.13, 0.24
HSL	0°, 18%, 71%
HSV	0°, 13%, 76%
XYZ	43.8551, 42.8426, 43.4942
YIQ	176.7740, 15.4960, 5.5120

Conversions

Conversions Part 2

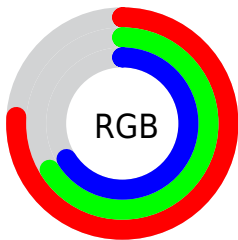
Format	Color
R_{YB}	195, 169, 169
Decimal	12822953
CIE _{Lab}	71.45, 9.43, 3.48
CIE _{LCh}	71, 10.054, 20.237
Yxy	42.8426, 0.3368, 0.3291
Android (android.graphics.Color)	4291013033 (0xFFC3A9A9)
YUV	176.7740, -3.8326, 15.9842
Hunter-Lab	65.4543, 5.0520, 6.4200

Details

The YUV color $176.7740, -3.8326, 15.9842$ is a light color, and the websafe version is hex $CC9999$. A complement of this color would be $187.2260, 3.8326, -15.9842$, and the grayscale version is $177.0000, 0.0000, 0.0000$.

A 20% lighter version of the original color is $232.3720, -4.1274, 17.2138$, and $124.1760, -3.5378, 14.7546$ is the 20% darker color. If you saturate the color by 10%, you get $163.4550, -6.6333, 27.6650$, and if you desaturate by 10%, it is $190.0930, -1.0318, 4.3034$.

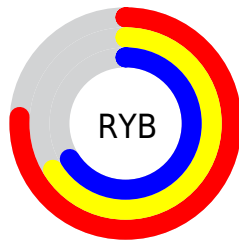
Distribution



Red (76%)

Green (66%)

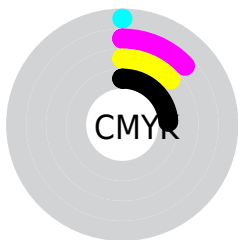
Blue (66%)



Red (76%)

Yellow (66%)

Blue (66%)

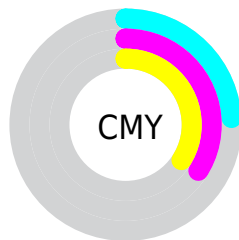


Cyan (0%)

Magenta (13%)

Yellow (13%)

Black (24%)



Cyan (24%)

Magenta (34%)

Yellow (34%)

Brightness & Saturation Gradients

These gradients show how the YUV color 176.7740, -3.8326, 15.9842 changes by changing the brightness by 10 percent. The first figure shows a shift by +10% for each color and the second figure -10%.


Similar to the brightness gradients but the following saturation gradients show a change of the YUV color 176.7740, -3.8326, 15.9842 by changing the saturation by 10% instead.


 176.7740, -3.8326,
15.9842


 176.7740, -3.8326,
15.9842


255.0000, 0.0000,
0.0000


 150.4750, -3.6852,
15.3694


 232.3720, -4.1274,
17.2138


 124.1760, -3.5378,
14.7546

 253.5980, -0.2948,
1.2296

 98.8770, -3.3904,
14.1399

 75.5780, -3.2430,
13.5251

 52.3930, -2.6587,
12.8103

 30.7950, -2.3639,
11.5808

 7.4750, -3.6852,

15.3694

■ 0.0000, 0.0000,
0.0000

■ 176.7740, -3.8326,
15.9842

■ 176.7740, -3.8326,
15.9842

■ 163.4550, -6.6333,
27.6650

■ 190.0930, -1.0318,
4.3034

■ 149.4350, -9.5815,
39.9605

■ 204.1130, 1.9163,
-7.9921

■ 135.4150,
-12.5296, 52.2560

■ 218.1330, 4.8644,
-20.2876

■ 122.0960,
-15.3303, 63.9368

■ 231.4520, 7.6652,
-31.9684

■ 108.7770,
-18.1311, 75.6176

■ 237.0600, 8.8444,
-36.8866

■ 94.7570, -21.0792,
87.9131

■ 81.4380, -23.8799,
99.5939

■ 67.4180, -26.8281,
111.8894

■ 58.3050, -28.7444,
119.8815

Harmonies

Analogous

The Analogous color harmony consists of three colors that are next to each other on the color wheel.



176.9030, 0.5408, 13.2401



176.7740, -3.8326, 15.9842



176.4380, -7.6109, 14.5249

Triad

The Triadic color harmony groups three colors that are evenly spaced from another and form a triangle on the color wheel.



176.7740, -3.8326, 15.9842



172.9900, -4.9251, -7.0072



174.3390, 9.1999, -10.8213

Complementary

The Complementary color scheme is a pair of colors which are on the opposite of each other on the color wheel.



176.7740, -3.8326, 15.9842



187.2260, 3.8326, -15.9842

Split Complementary

Split-complementary colors differ from the complementary color scheme. The scheme consists of three colors, the original color and two neighbors of the complement color.



172.6650, 8.0532, -16.3692



176.7740, -3.8326, 15.9842



172.2110, -0.1040, -13.3400

Square

The Square scheme is like the rectangle color scheme, but the four colors are evenly spaced on the color wheel.



176.7740, -3.8326, 15.9842



173.9480, -7.8624, 1.7996



171.7420, 4.5642, -17.3137



175.7530, 8.0098, -2.4144

Rectangle

The Rectangle color scheme consists of four colors that form a rectangle on the color wheel.



176.7740, -3.8326, 15.9842



175.1880, -8.4737, 11.2361



171.7420, 4.5642, -17.3137



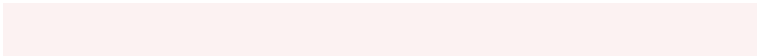
173.9150, 8.9159, -13.0805

Sweetspot

The Sweet Spot groups the original color and five complimentary colors.



176.7740, -3.8326, 15.9842



244.9900, -1.4741, 6.1478



179.7380, 7.5242, 13.3848



123.0930, -1.0318, 4.3034



0.0000, 0.0000, 0.0000



128.0000, 0.0000, 0.0000

Same Dimension

The Same Dimension uses a secret algorithm to generate beautiful new colors.



176.7740, -3.8326, 15.9842



223.9600, -5.8963, 24.5911



184.4050, -7.5947, 9.2918



89.9900, -1.4741, 6.1478



48.1390, -23.7325, 98.9791



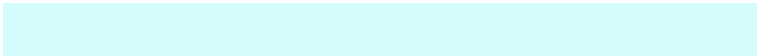
9.8670, -4.8644, 20.2876

Inverse Universe

The Inverse Universe completely reimagines the original color for something new.



187.2260, 3.8326, -15.9842



240.0400, 5.8963, -24.5911



179.5950, 7.5947, -9.2918



94.0100, 1.4741, -6.1478



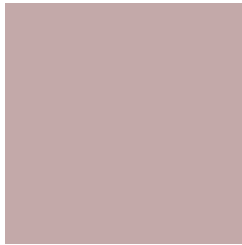
112.8610, 23.7325, -98.9791



23.1330, 4.8644, -20.2876

Previews

White Background



This preview shows how the YUV color 176.7740, -3.8326, 15.9842 looks on a white background.

Color Contrast Check

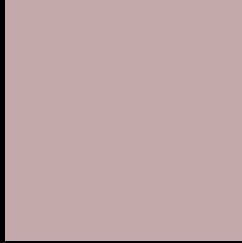
Large Text (above 18pt) WCAG AA × Fail

Any Text WCAG AA × Fail

Large Text (above 18pt) WCAG AAA × Fail

Any Text WCAG AAA × Fail

Black Background



This preview shows how the YUV color 176.7740, -3.8326, 15.9842 looks on a black background.

Color Contrast Check

Large Text (above 18pt) WCAG AA ✓ Pass

Any Text WCAG AA ✓ Pass

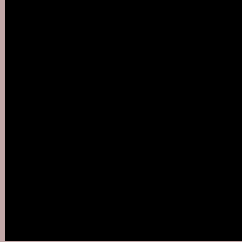
Large Text (above 18pt) WCAG AAA ✓ Pass

Any Text WCAG AAA ✓ Pass

If you want to check with other color combinations, try the [Color Contrast Checker](#).

YUV 176.7740, -3.8326, 15.9842

Background



This preview shows how black text looks on a background with the YUV color 176.7740, -3.8326, 15.9842.



This preview shows how white text looks on a background with the YUV color 176.7740, -3.8326,

15.9842.

Color Blindness Simulation

Color vision deficiency is a very complex topic, and I could not describe the different causes any better than Wikipedia does, so if you want to learn more, you should check out their [article about color blindness](#).

Dichromacy



Original Color

176.7740, -3.8326, 15.9842

Protanopia

175.2670, -1.6106, 3.2738

Deuteranopia

176.4750, -3.6852, 15.3694



Tritanopia

177.1530, 1.4036, 16.5288

Trichromacy



Original Color

176.7740, -3.8326, 15.9842

Protanomaly

175.7730, -2.3531, 8.0921

Deuteranomaly

176.4750, -3.6852, 15.3694

Tritanomaly

177.2840, -0.6330, 16.4139

Monochromacy



Original Color

176.7740, -3.8326, 15.9842

Achromatopsia

177.0000, 0.0000, 0.0000

Achromatomaly

176.9900, -1.4741, 6.1478

CSS Examples

Text

The CSS property to change the color of the text to YUV 176.7740, -3.8326, 15.9842 is called "color". The color property can be set on classes, ids or directly on the HTML element.

This example shows how text in the color `rgb(195, 169, 169)` looks like.

```
.text, #text, p{  
    color:rgb(195, 169, 169)  
}
```

If you want to add a text shadow in that color use the text-shadow property, you can generate a text shadow directly with our [CSS Text Shadow Generator](#).

Here you see how black text with a 4 pixel rgb(195, 169, 169) colored shadow looks like.

```
.shadow{ text-shadow: 4px 4px 2px rgb(195, 169, 169) }
```

Border

The CSS property to change the border of an element to YUV 176.7740, -3.8326, 15.9842 is called "border". The border property can be set on classes, ids or directly on the HTML element.

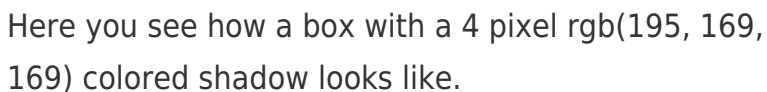
This example shows the color as border, it can be applied via the CSS property "border" or "border-color".

```
.border, #border, table{ border:4px solid rgb(195, 169, 169) }
```


If only the border color should be changed use the property `border-color`.

```
.border{ border-color:rgb(195, 169, 169) }
```

If you want to add a box shadow in that color use:



Here you see how a box with a 4 pixel `rgb(195, 169, 169)` colored shadow looks like.

```
.boxshadow{ -moz-box-shadow:4px 4px 4px 4px rgb(195, 169, 169); -webkit-box-shadow:4px 4px 4px 4px rgb(195, 169, 169); box-shadow:4px 4px 4px 4px rgb(195, 169, 169) }
```

Background

The CSS property to change the background color of an element to YUV 176.7740, -3.8326, 15.9842 is called "background". The background property can be set on classes, ids or directly on the HTML element.

```
.background, #background, body{  
background: rgb(195, 169, 169) }
```

If only the background color should be changed can be used:

```
.background{ background-color: rgb(195,  
169, 169) }
```

This example shows the color as background, it is applied via the CSS property "background".

To optimize and compress your CSS code, you can use our [online CSS compressor and optimizer](#) based on csstidy. If you want to create a linear or radial gradient as background or border, check our [CSS Gradient Generator](#).

Hey! You found this booklet interesting? Support Converting Colors with the new Membership Option!

The pro membership hides all ads, plus gives you double the colors in the color bucket, and more awesome pro features!

[Learn more, Memberships starting at \\$2.50/m!](#)

**Follow me
on Twitter!**

@ConvertingColor