

Converting Colors

YUV(176.9030, -12.7702,
36.0421)

Have a look what the booklet for
YUV(176.9030, -12.7702, 36.0421)
contains.

YUV(176.9030, -12.7702, 36.0421)	3
<i>Conversions</i>	4
<i>Details</i>	6
<i>Harmonies</i>	12
<i>Previews</i>	24
<i>Color Blindness Simulation</i>	28
<i>CSS Examples</i>	31

Color

**YUV(176.9030, -12.7702,
36.0421)**

Conversions

Conversions Part 1

Format	Color
Hex	DAA197
RGB	218, 161, 151
RGB Percent	85%, 63%, 59%
CMY	0.1451, 0.3686, 0.4078
CMYK	0.00, 0.26, 0.31, 0.15
HSL	9°, 48%, 72%
HSV	9°, 31%, 85%
XYZ	47.2442, 42.6295, 35.0164
YIQ	176.9030, 37.1820, 8.9740

Conversions

Conversions Part 2

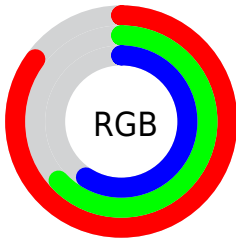
Format	Color
R _Y B	218, 163, 151
Decimal	14328215
CIE Lab	71.30, 19.77, 13.50
CIE LCh	71, 23.935, 34.326
Yxy	42.6295, 0.3783, 0.3413
Android (android.graphics.Color)	4292518295 (0xFFDAA197)
YUV	176.9030, -12.7702, 36.0421
Hunter-Lab	65.2913, 14.9013, 13.9060

Details

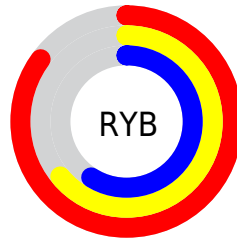
The YUV color **176.9030, -12.7702, 36.0421** is a light color, and the websafe version is hex **CC9999**. A complement of this color would be **192.0970, 12.7702, -36.0421**, and the grayscale version is **177.0000, 0.0000, 0.0000**.

A 20% lighter version of the original color is **226.4070, -10.5537, 25.0761**, and **123.8210, -11.7438, 33.4830** is the 20% darker color. If you saturate the color by 10%, you get **163.2420, -16.8813, 48.0228**, and if you desaturate by 10%, it is **190.5640, -8.6591, 24.0614**.

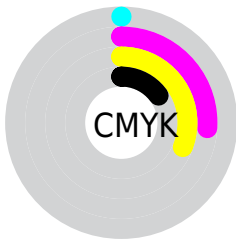
Distribution



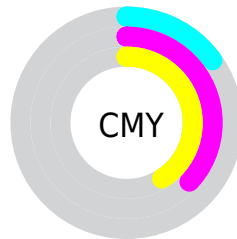
- Red (85%)
- Green (63%)
- Blue (59%)



- Red (85%)
- Yellow (64%)
- Blue (59%)



- Cyan (0%)
- Magenta (26%)
- Yellow (31%)
- Black (15%)



- Cyan (15%)
- Magenta (37%)
- Yellow (41%)

Brightness & Saturation Gradients

These gradients show how the YUV color 176.9030, -12.7702, 36.0421 changes by changing the brightness by 10 percent. The first figure shows a shift by +10% for each color and the second figure -10%.

Similar to the brightness gradients but the following saturation gradients show a change of the YUV color 176.9030, -12.7702, 36.0421 by changing the saturation by 10% instead.

■ 176.9030,
-12.7702, 36.0421

■ 176.9030,
-12.7702, 36.0421

255.0000, 0.0000,
0.0000

■ 150.3050,
-12.4754, 34.8125

■ 226.4070,
-10.5537, 25.0761

■ 123.8210,
-11.7438, 33.4830

■ 246.6220, -6.7156,
7.3475

■ 98.6250, -11.1541,
31.0239

■ 74.2550, -9.9857,
29.5944

■ 50.4720, -9.1067,
27.6501

■ 28.3470, -9.5381,
26.0057

■ 10.7640, -5.3067,

22.1320

0.0000, 0.0000,
0.0000

176.9030,
-12.7702, 36.0421

176.9030,
-12.7702, 36.0421

163.2420,
-16.8813, 48.0228

190.5640, -8.6591,
24.0614

150.1680,
-21.2818, 59.4887

203.6380, -4.2585,
12.5955

136.6210,
-24.9562, 71.3694

217.1850, -0.5842,
0.7148

123.5470,
-29.3567, 82.8353

230.2590, 3.8163,
-10.7511

109.8860,
-33.4678, 94.8160

243.3500, 5.7435,
-22.2319

■ 96.8120, -37.8683,
106.2819

■ 243.9370, 5.4541,
-22.7467

■ 84.5530, -41.6846,
117.0330

Harmonies

Analogous

The Analogous color harmony consists of three colors that are next to each other on the color wheel.



178.1230, -3.0186, 34.9721



176.9030, -12.7702, 36.0421



175.4260, -19.4370, 27.6904

Triad

The Triadic color harmony groups three colors that are evenly spaced from another and form a triangle on the color wheel.



176.9030, -12.7702, 36.0421



167.8260, -6.3232, -25.2804



173.3240, 22.0253, -17.8241

Complementary

The Complementary color scheme is a pair of colors which are on the opposite of each other on the color wheel.



176.9030, -12.7702, 36.0421



192.0970, 12.7702, -36.0421

Split Complementary

Split-complementary colors differ from the complementary color scheme. The scheme consists of three colors, the original color and two neighbors of the complement color.



168.4910, 21.9429, -38.1416



176.9030, -12.7702, 36.0421



165.5280, 5.6557, -40.8051

Square

The Square scheme is like the rectangle color scheme, but the four colors are evenly spaced on the color wheel.



176.9030, -12.7702, 36.0421



171.0150, -16.2764, -6.1522



165.2420, 16.1497, -46.6932



177.0880, 16.7186, 4.3078

Rectangle

The Rectangle color scheme consists of four colors that form a rectangle on the color wheel.



176.9030, -12.7702, 36.0421



174.2030, -21.2991, 18.2390



165.2420, 16.1497, -46.6932



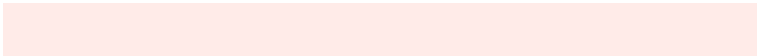
172.0950, 22.6312, -25.5163

Sweetspot

The Sweet Spot groups the original color and five complimentary colors.



176.9030, -12.7702, 36.0421



240.6380, -4.2585, 12.5955



177.6450, 15.4580, 35.3913



119.2460, -3.0793, 7.6773



0.0000, 0.0000, 0.0000



128.0000, 0.0000, 0.0000

Same Dimension

The Same Dimension uses a secret algorithm to generate beautiful new colors.



176.9030, -12.7702, 36.0421



197.3240, -17.9077, 50.5819



195.6870, -22.0307, 19.5685



102.8760, -1.9109, 6.2477



66.9890, -33.0256, 92.9716



17.8630, -8.8065, 24.6761

Inverse Universe

The Inverse Universe completely reimagines the original color for something new.



192.0970, 12.7702, -36.0421



218.6760, 17.9077, -50.5819



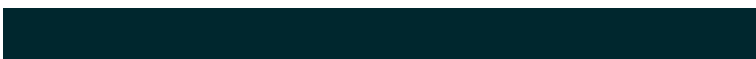
173.3130, 22.0307, -19.5685



105.5370, 2.2003, -5.7329



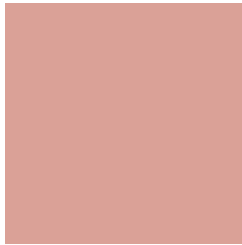
106.5980, 32.7362, -93.4864



28.1370, 8.8065, -24.6761

Previews

White Background



This preview shows how the YUV color 176.9030, -12.7702, 36.0421 looks on a white background.

Color Contrast Check

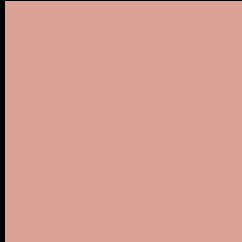
Large Text (above 18pt) WCAG AA × Fail

Any Text WCAG AA × Fail

Large Text (above 18pt) WCAG AAA × Fail

Any Text WCAG AAA × Fail

Black Background



This preview shows how the YUV color 176.9030, -12.7702, 36.0421 looks on a black background.

Color Contrast Check

Large Text (above 18pt) WCAG AA ✓ Pass

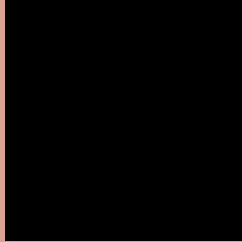
Any Text WCAG AA ✓ Pass

Large Text (above 18pt) WCAG AAA ✓ Pass

Any Text WCAG AAA ✓ Pass

If you want to check with other color combinations, try the [Color Contrast Checker](#).

YUV 176.9030, -12.7702, 36.0421 Background



This preview shows how black text looks on a background with the YUV color 176.9030, -12.7702, 36.0421.



This preview shows how white text looks on a background with the YUV color 176.9030, -12.7702, 36.0421.

Color Blindness Simulation

Color vision deficiency is a very complex topic, and I could not describe the different causes any better than Wikipedia does, so if you want to learn more, you should check out their [article about color blindness](#).

Dichromacy



Original Color

176.9030, -12.7702, 36.0421

Protanopia

174.5680, -8.1680, 6.5179

Deuteranopia

175.8150, -12.7268, 22.0872



Tritanopia

177.9060, -3.8977, 36.9164

Trichromacy



Original Color

176.9030, -12.7702, 36.0421

Protanomaly

175.1780, -9.9478, 17.3839

Deuteranomaly

175.8480, -12.7431, 27.3203

Tritanomaly

177.3960, -7.0972, 36.4867

Monochromacy



Original Color

176.9030, -12.7702, 36.0421

Achromatopsia

177.0000, 0.0000, 0.0000

Achromatomaly

176.9370, -4.4059, 13.2103

CSS Examples

Text

The CSS property to change the color of the text to YUV 176.9030, -12.7702, 36.0421 is called "color". The color property can be set on classes, ids or directly on the HTML element.

This example shows how text in the color `rgb(218, 161, 151)` looks like.

```
.text, #text, p{  
    color:rgb(218, 161, 151)  
}
```

If you want to add a text shadow in that color use the text-shadow property, you can generate a text shadow directly with our [CSS Text Shadow Generator](#).

Here you see how black text with a 4 pixel rgb(218, 161, 151) colored shadow looks like.

```
.shadow{ text-shadow: 4px 4px 2px rgb(218, 161, 151) }
```

Border

The CSS property to change the border of an element to YUV 176.9030, -12.7702, 36.0421 is called "border".

The border property can be set on classes, ids or directly on the HTML element.

This example shows the color as border, it can be applied via the CSS property "border" or "border-color".

```
.border, #border, table{ border:4px solid rgb(218, 161, 151) }
```


If only the border color should be changed use the property border-color.

```
.border{ border-color:rgb(218, 161, 151) }
```

If you want to add a box shadow in that color use:

Here you see how a box with a 4 pixel rgb(218, 161, 151) colored shadow looks like.

```
.boxshadow{ -moz-box-shadow:4px 4px 4px  
4px rgb(218, 161, 151); -webkit-box-  
shadow:4px 4px 4px 4px rgb(218, 161, 151);  
box-shadow:4px 4px 4px 4px rgb(218, 161,  
151) }
```

Background

The CSS property to change the background color of an element to YUV 176.9030, -12.7702, 36.0421 is called "background". The background property can be set on classes, ids or directly on the HTML element.

```
.background, #background, body{  
background: rgb(218, 161, 151) }
```

If only the background color should be changed can be used:

```
.background{ background-color: rgb(218,  
161, 151) }
```

This example shows the color as background, it is applied via the CSS property "background".

To optimize and compress your CSS code, you can use our [online CSS compressor and optimizer](#) based on csstidy. If you want to create a linear or radial gradient as background or border, check our [CSS Gradient Generator](#).

Hey! You found this booklet interesting? Support Converting Colors with the new Membership Option!

The pro membership hides all ads, plus gives you double the colors in the color bucket, and more awesome pro features!

[Learn more, Memberships starting at \\$2.50/m!](#)

**Follow me
on Twitter!**

@ConvertingColor