

Converting Colors

YUV(177.0900, -23.2154,
26.2311)

Have a look what the booklet for
YUV(177.0900, -23.2154, 26.2311)
contains.

YUV(177.0900, -23.2154, 26.2311)	3
<i>Conversions</i>	4
<i>Details</i>	6
<i>Harmonies</i>	12
<i>Previews</i>	24
<i>Color Blindness Simulation</i>	28
<i>CSS Examples</i>	31

Color

**YUV(177.0900, -23.2154,
26.2311)**

Conversions

Conversions Part 1

Format	Color
Hex	CFAB82
RGB	207, 171, 130
RGB Percent	81%, 67%, 51%
CMY	0.1882, 0.3294, 0.4902
CMYK	0.00, 0.17, 0.37, 0.19
HSL	32°, 45%, 66%
HSV	32°, 37%, 81%
XYZ	44.3243, 44.0029, 27.2764
YIQ	177.0900, 34.6170, -5.1190

Conversions

Conversions Part 2

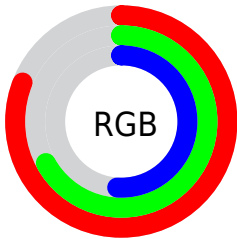
Format	Color
RYB	198, 207, 130
Decimal	13609858
CIELab	72.23, 7.43, 26.04
CIELCh	72, 27.084, 74.069
Yxy	44.0029, 0.3834, 0.3806
Android (android.graphics.Color)	4291799938 (0xFFCFAB82)
YUV	177.0900, -23.2154, 26.2311
Hunter-Lab	66.3347, 3.1865, 22.0547

Details

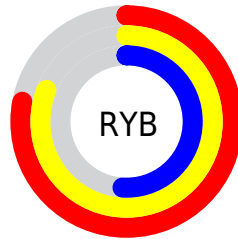
The YUV color **177.0900, -23.2154, 26.2311** is a light color, and the websafe version is hex **CC9966**. A complement of this color would be **159.9100, 23.2154, -26.2311**, and the grayscale version is **177.0000, 0.0000, 0.0000**.

A 20% lighter version of the original color is **229.7690, -23.0571, 22.1276**, and **124.1220, -21.7521, 23.5720** is the 20% darker color. If you saturate the color by 10%, you get **168.8260, -29.4942, 33.4786**, and if you desaturate by 10%, it is **185.3540, -16.9365, 18.9835**.

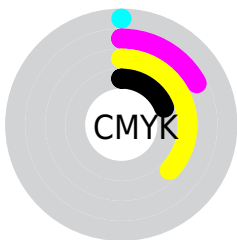
Distribution



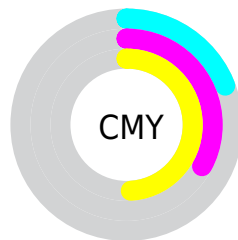
- Red (81%)
- Green (67%)
- Blue (51%)



- Red (78%)
- Yellow (81%)
- Blue (51%)



- Cyan (0%)
- Magenta (17%)
- Yellow (37%)
- Black (19%)



- Cyan (19%)
- Magenta (33%)
- Yellow (49%)

Brightness & Saturation Gradients

These gradients show how the YUV color 177.0900, -23.2154, 26.2311 changes by changing the brightness by 10 percent. The first figure shows a shift by +10% for each color and the second figure -10%.

Similar to the brightness gradients but the following saturation gradients show a change of the YUV color 177.0900, -23.2154, 26.2311 by changing the saturation by 10% instead.

■ 177.0900,
-23.2154, 26.2311

■ 177.0900,
-23.2154, 26.2311

■ 255.0000, 0.0000,
0.0000

■ 150.6060,
-22.4838, 24.9015

■ 229.7690,
-23.0571, 22.1276

■ 124.1220,
-21.7521, 23.5720

■ 249.9840,
-19.2191, 4.3990

■ 98.7520, -20.5837,
22.1425

■ 253.1760, -6.9888,
1.5996

■ 74.8550, -20.1415,
20.2982

■ 51.4850, -18.9731,
18.8687

■ 30.5000, -15.0365,
16.2245

■ 8.6490, -4.2640,

14.3398

■ 0.0000, 0.0000,
0.0000

■ 177.0900,
-23.2154, 26.2311

■ 177.0900,
-23.2154, 26.2311

■ 168.8260,
-29.4942, 33.4786

■ 185.3540,
-16.9365, 18.9835

■ 161.2630,
-35.6257, 40.1113

■ 192.9170,
-10.8051, 12.3508

■ 152.9990,
-41.9045, 47.3589

■ 201.1810, -4.5262,
5.1033

■ 144.7350,
-48.1834, 54.6064

■ 209.4450, 1.7526,
-2.1443

■ 137.1720,
-54.3148, 61.2392

■ 217.1220, 8.3209,
-8.8770

■ 128.9080,
-60.5936, 68.4867

■ 225.2720, 14.1629,
-16.0245

■ 126.4630,
-62.3463, 70.6309

■ 231.2560, 11.7058,
-21.2725

■ 236.5390, 9.1013,
-25.9057

■ 240.6480, 7.0755,
-29.5093

Harmonies

Analogous

The Analogous color harmony consists of three colors that are next to each other on the color wheel.



178.7740, -17.1436, 38.7862



177.0900, -23.2154, 26.2311



174.4960, -22.4295, 7.4580

Triad

The Triadic color harmony groups three colors that are evenly spaced from another and form a triangle on the color wheel.



177.0900, -23.2154, 26.2311



165.5420, 11.0718, -51.3413



180.6160, 15.9653, 12.6148

Complementary

The Complementary color scheme is a pair of colors which are on the opposite of each other on the color wheel.



177.0900, -23.2154, 26.2311



159.9100, 23.2154, -26.2311

Split Complementary

Split-complementary colors differ from the complementary color scheme. The scheme consists of three colors, the original color and two neighbors of the complement color.



177.1120, 23.6088, -12.3762



177.0900, -23.2154, 26.2311



166.3920, 21.9917, -53.8408

Square

The Square scheme is like the rectangle color scheme, but the four colors are evenly spaced on the color wheel.



177.0900, -23.2154, 26.2311



168.0850, -2.5069, -36.0315



171.2290, 26.0161, -37.9118



181.4630, 4.7017, 32.0429

Rectangle

The Rectangle color scheme consists of four colors that form a rectangle on the color wheel.



177.0900, -23.2154, 26.2311



172.8470, -18.1656, -6.8818



171.2290, 26.0161, -37.9118



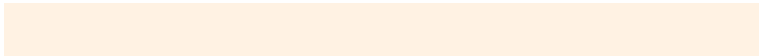
179.9570, 18.7552, 4.4227

Sweetspot

The Sweet Spot groups the original color and five complimentary colors.



177.0900, -23.2154, 26.2311



244.1770, -8.4683, 9.4918



157.2410, 4.8112, 43.6386



121.3660, -5.1104, 5.8180



0.0000, 0.0000, 0.0000



128.0000, 0.0000, 0.0000

Same Dimension

The Same Dimension uses a secret algorithm to generate beautiful new colors.



177.0900, -23.2154, 26.2311



210.1920, -34.6047, 39.2966



197.9230, -33.4860, 7.0835



100.8110, -3.3578, 3.6738



103.0620, -50.8096, 56.9506



25.1730, -12.4103, 13.8803

Inverse Universe

The Inverse Universe completely reimagines the original color for something new.



159.9100, 23.2154, -26.2311



184.8080, 34.6047, -39.2966



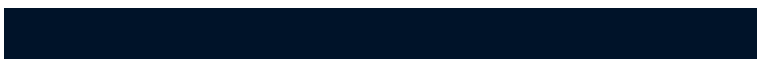
139.0770, 33.4860, -7.0835



98.1890, 3.3578, -3.6738



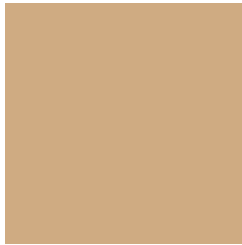
65.5250, 50.5202, -57.4654



15.8270, 12.4103, -13.8803

Previews

White Background



This preview shows how the YUV color 177.0900, -23.2154, 26.2311 looks on a white background.

Color Contrast Check

Large Text (above 18pt) WCAG AA × Fail

Any Text WCAG AA × Fail

Large Text (above 18pt) WCAG AAA × Fail

Any Text WCAG AAA × Fail

Black Background



This preview shows how the YUV color 177.0900, -23.2154, 26.2311 looks on a black background.

Color Contrast Check

Large Text (above 18pt) WCAG AA ✓ Pass

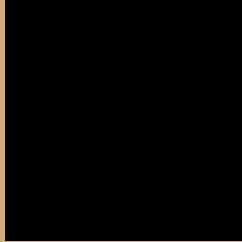
Any Text WCAG AA ✓ Pass

Large Text (above 18pt) WCAG AAA ✓ Pass

Any Text WCAG AAA ✓ Pass

If you want to check with other color combinations, try the [Color Contrast Checker](#).

YUV 177.0900, -23.2154, 26.2311 Background



This preview shows how black text looks on a background with the YUV color 177.0900, -23.2154, 26.2311.



This preview shows how white text looks on a background with the YUV color 177.0900, -23.2154, 26.2311.

Color Blindness Simulation

Color vision deficiency is a very complex topic, and I could not describe the different causes any better than Wikipedia does, so if you want to learn more, you should check out their [article about color blindness](#).

Dichromacy



Original Color

177.0900, -23.2154, 26.2311

Protanopia

175.8710, -21.1354, 12.3911

Deuteranopia

177.4000, -23.3682, 28.5902



Tritanopia

180.4210, -1.6866, 27.6948

Trichromacy



Original Color

177.0900, -23.2154, 26.2311

Protanomaly

176.3770, -21.8779, 17.2094

Deuteranomaly

177.1010, -23.2208, 27.9754

Tritanomaly

179.0590, -9.3961, 27.1353

Monochromacy



Original Color

177.0900, -23.2154, 26.2311

Achromatopsia

177.0000, 0.0000, 0.0000

Achromatomaly

177.1770, -8.4683, 9.4918

CSS Examples

Text

The CSS property to change the color of the text to YUV 177.0900, -23.2154, 26.2311 is called "color". The color property can be set on classes, ids or directly on the HTML element.

This example shows how text in the color `rgb(207, 171, 130)` looks like.

```
.text, #text, p{  
    color:rgb(207, 171, 130)  
}
```

If you want to add a text shadow in that color use the text-shadow property, you can generate a text shadow directly with our [CSS Text Shadow Generator](#).

Here you see how black text with a 4 pixel rgb(207, 171, 130) colored shadow looks like.

```
.shadow{ text-shadow: 4px 4px 2px rgb(207, 171, 130) }
```

Border

The CSS property to change the border of an element to YUV 177.0900, -23.2154, 26.2311 is called "border".

The border property can be set on classes, ids or directly on the HTML element.

This example shows the color as border, it can be applied via the CSS property "border" or "border-color".

```
.border, #border, table{ border:4px solid rgb(207, 171, 130) }
```


If only the border color should be changed use the property `border-color`.

```
.border{ border-color:rgb(207, 171, 130) }
```

If you want to add a box shadow in that color use:

Here you see how a box with a 4 pixel `rgb(207, 171, 130)` colored shadow looks like.

```
.boxshadow{ -moz-box-shadow:4px 4px 4px  
4px rgb(207, 171, 130); -webkit-box-  
shadow:4px 4px 4px 4px rgb(207, 171, 130);  
box-shadow:4px 4px 4px 4px rgb(207, 171,  
130) }
```

Background

The CSS property to change the background color of an element to YUV 177.0900, -23.2154, 26.2311 is called "background". The background property can be set on classes, ids or directly on the HTML element.

```
.background, #background, body{  
background: rgb(207, 171, 130) }
```

If only the background color should be changed can be used:

```
.background{ background-color: rgb(207,  
171, 130) }
```

This example shows the color as background, it is applied via the CSS property "background".

To optimize and compress your CSS code, you can use our [online CSS compressor and optimizer](#) based on csstidy. If you want to create a linear or radial gradient as background or border, check our [CSS Gradient Generator](#).

Hey! You found this booklet interesting? Support Converting Colors with the new Membership Option!

The pro membership hides all ads, plus gives you double the colors in the color bucket, and more awesome pro features!

[Learn more, Memberships starting at \\$2.50/m!](#)

**Follow me
on Twitter!**

@ConvertingColor