

Converting Colors

YUV(177.3650, -0.1799,
11.0809)

Have a look what the booklet for
YUV(177.3650, -0.1799, 11.0809)
contains.

YUV(177.3650, -0.1799, 11.0809)	3
<i>Conversions</i>	4
<i>Details</i>	6
<i>Harmonies</i>	12
<i>Previews</i>	24
<i>Color Blindness Simulation</i>	28
<i>CSS Examples</i>	31

Color

**YUV(177.3650, -0.1799,
11.0809)**

Conversions

Conversions Part 1

Format	Color
Hex	BEABB1
RGB	190, 171, 177
RGB Percent	75%, 67%, 69%
CMY	0.2549, 0.3294, 0.3059
CMYK	0.00, 0.10, 0.07, 0.25
HSL	341°, 13%, 71%
HSV	341°, 10%, 75%
XYZ	43.7339, 43.2473, 47.6375
YIQ	177.3650, 9.3980, 5.8940

Conversions

Conversions Part 2

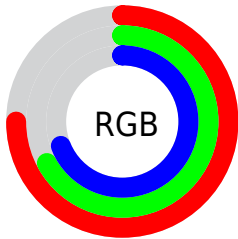
Format	Color
RYB	190, 171, 177
Decimal	12495793
CIELab	71.72, 7.89, -0.59
CIELCh	72, 7.916, 355.762
Yxy	43.2473, 0.3249, 0.3213
Android (android.graphics.Color)	4290685873 (0xFFBEABB1)
YUV	177.3650, -0.1799, 11.0809
Hunter-Lab	65.7627, 3.6226, 3.0851

Details

The YUV color $177.3650, -0.1799, 11.0809$ is a light color, and the websafe version is hex 999999 . A complement of this color would be $183.6350, 0.1799, -11.0809$, and the grayscale version is $177.0000, 0.0000, 0.0000$.

A 20% lighter version of the original color is $232.7780, 0.1094, 11.5957$, and $124.9520, -0.4693, 10.5661$ is the 20% darker color. If you saturate the color by 10%, you get $164.7300, -0.3599, 22.1618$, and if you desaturate by 10%, it is $190.0000, 0.0000, 0.0000$.

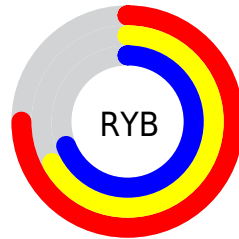
Distribution



Red (75%)

Green (67%)

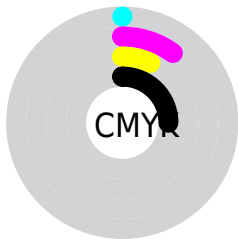
Blue (69%)



Red (75%)

Yellow (67%)

Blue (69%)

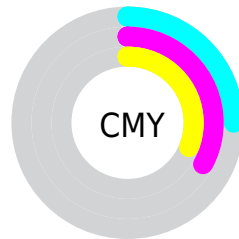


Cyan (0%)

Magenta (10%)

Yellow (7%)

Black (25%)



Cyan (25%)

Magenta (33%)

Yellow (31%)

Brightness & Saturation Gradients

These gradients show how the YUV color 177.3650, -0.1799, 11.0809 changes by changing the brightness by 10 percent. The first figure shows a shift by +10% for each color and the second figure -10%.

Similar to the brightness gradients but the following saturation gradients show a change of the YUV color 177.3650, -0.1799, 11.0809 by changing the saturation by 10% instead.

■ 177.3650, -0.1799,
11.0809

■ 177.3650, -0.1799,
11.0809

255.0000, 0.0000,
0.0000

■ 150.3650, -0.1799,
11.0809

■ 232.7780, 0.1094,
11.5957

■ 124.9520, -0.4693,
10.5661

■ 99.7670, 0.1149,
9.8513

■ 75.7670, 0.1149,
9.8513

■ 53.0550, -0.0271,
8.7218

■ 31.7560, 0.1203,
8.1070

■ 7.4900, 0.2514,

12.7253

■ 0.0000, 0.0000,
0.0000

■ 177.3650, -0.1799,
11.0809

■ 177.3650, -0.1799,
11.0809

■ 164.7300, -0.3599,
22.1618

■ 190.0000, 0.0000,
0.0000

■ 152.0950, -0.5398,
33.2427

■ 202.6350, 0.1799,
-11.0809

■ 139.4600, -0.7198,
44.3236

■ 215.2700, 0.3599,
-22.1618

■ 126.8250, -0.8997,
55.4045

■ 227.9050, 0.5398,
-33.2427

■ 114.1900, -1.0797,
66.4854

■ 234.0830, 3.9031,
-38.6608

■ 101.5550, -1.2596,
77.5663

■ 235.5650, 9.5815,
-39.9605

■ 88.9200, -1.4396,
88.6472

■ 76.2850, -1.6195,
99.7281

■ 63.6500, -1.7994,
110.8090

Harmonies

Analogous

The Analogous color harmony consists of three colors that are next to each other on the color wheel.



176.9560, 3.4727, 6.1776



177.3650, -0.1799, 11.0809



177.1650, -3.5323, 13.0103

Triad

The Triadic color harmony groups three colors that are evenly spaced from another and form a triangle on the color wheel.



177.3650, -0.1799, 11.0809



174.8060, -5.8204, 0.1701



174.5300, 6.1477, -11.8658

Complementary

The Complementary color scheme is a pair of colors which are on the opposite of each other on the color wheel.



177.3650, -0.1799, 11.0809



183.6350, 0.1799, -11.0809

Split Complementary

Split-complementary colors differ from the complementary color scheme. The scheme consists of three colors, the original color and two neighbors of the complement color.



173.6500, 4.1166, -13.7250



177.3650, -0.1799, 11.0809



174.0440, -3.4727, -6.1776

Square

The Square scheme is like the rectangle color scheme, but the four colors are evenly spaced on the color wheel.



177.3650, -0.1799, 11.0809



175.7960, -7.2944, 6.3179



173.3360, 0.3274, -11.6957



175.4920, 7.1524, -7.4475

Rectangle

The Rectangle color scheme consists of four colors that form a rectangle on the color wheel.



177.3650, -0.1799, 11.0809



176.6980, -5.2741, 11.6659



173.3360, 0.3274, -11.6957



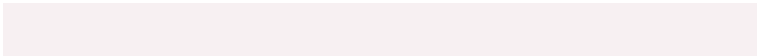
173.8180, 6.0057, -12.9954

Sweetspot

The Sweet Spot groups the original color and five complimentary colors.



177.3650, -0.1799, 11.0809



242.3210, -0.1583, 4.1035



177.0530, 6.3829, 6.0925



121.7230, 0.1366, 2.8739



252.0000, 0.0000, 0.0000



125.0000, 0.0000, 0.0000

Same Dimension

The Same Dimension uses a secret algorithm to generate beautiful new colors.



177.3650, -0.1799, 11.0809



227.6970, -0.3436, 16.9287



178.4420, -3.6689, 10.1364



88.0330, -0.0163, 5.2331



52.9420, -1.4504, 92.1359



10.4090, -0.2016, 18.0583

Inverse Universe

The Inverse Universe completely reimagines the original color for something new.



177.3650, -0.1799, 11.0809



227.6970, -0.3436, 16.9287



182.5580, 3.6689, -10.1364



88.0330, -0.0163, 5.2331



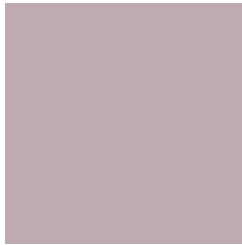
52.9420, -1.4504, 92.1359



10.4090, -0.2016, 18.0583

Previews

White Background



This preview shows how the YUV color 177.3650, -0.1799, 11.0809 looks on a white background.

Color Contrast Check

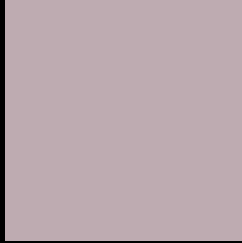
Large Text (above 18pt) WCAG AA × Fail

Any Text WCAG AA × Fail

Large Text (above 18pt) WCAG AAA × Fail

Any Text WCAG AAA × Fail

Black Background



This preview shows how the YUV color 177.3650, -0.1799, 11.0809 looks on a black background.

Color Contrast Check

Large Text (above 18pt) WCAG AA ✓ Pass

Any Text WCAG AA ✓ Pass

Large Text (above 18pt) WCAG AAA ✓ Pass

Any Text WCAG AAA ✓ Pass

If you want to check with other color combinations, try the [Color Contrast Checker](#).

YUV 177.3650, -0.1799, 11.0809

Background



This preview shows how black text looks on a background with the YUV color 177.3650, -0.1799, 11.0809.



This preview shows how white text looks on a background with the YUV color 177.3650, -0.1799,

Color Blindness Simulation

Color vision deficiency is a very complex topic, and I could not describe the different causes any better than Wikipedia does, so if you want to learn more, you should check out their [article about color blindness](#).

Dichromacy



Original Color

177.3650, -0.1799, 11.0809

Protanopia

176.3530, 1.3050, 1.4444

Deuteranopia

177.3760, -0.1854, 12.8252



Tritanopia

177.7610, 2.5828, 11.6106

Trichromacy



Original Color

177.3650, -0.1799, 11.0809

Protanomaly

176.8480, 0.5679, 4.5183

Deuteranomaly

177.0770, -0.0380, 12.2105

Tritanomaly

177.5330, 1.7092, 11.8106

Monochromacy



Original Color

177.3650, -0.1799, 11.0809

Achromatopsia

177.0000, 0.0000, 0.0000

Achromatomaly

177.3210, -0.1583, 4.1035

CSS Examples

Text

The CSS property to change the color of the text to YUV 177.3650, -0.1799, 11.0809 is called "color". The color property can be set on classes, ids or directly on the HTML element.

This example shows how text in the color `rgb(190, 171, 177)` looks like.

```
.text, #text, p{  
    color:rgb(190, 171, 177)  
}
```

If you want to add a text shadow in that color use the text-shadow property, you can generate a text shadow directly with our [CSS Text Shadow Generator](#).

Here you see how black text with a 4 pixel rgb(190, 171, 177) colored shadow looks like.

```
.shadow{ text-shadow: 4px 4px 2px rgb(190, 171, 177) }
```

Border

The CSS property to change the border of an element to YUV 177.3650, -0.1799, 11.0809 is called "border". The border property can be set on classes, ids or directly on the HTML element.

This example shows the color as border, it can be applied via the CSS property "border" or "border-color".

```
.border, #border, table{ border:4px solid rgb(190, 171, 177) }
```


If only the border color should be changed use the property `border-color`.

```
.border{ border-color:rgb(190, 171, 177) }
```

If you want to add a box shadow in that color use:

Here you see how a box with a 4 pixel `rgb(190, 171, 177)` colored shadow looks like.

```
.boxshadow{ -moz-box-shadow:4px 4px 4px  
4px rgb(190, 171, 177); -webkit-box-  
shadow:4px 4px 4px 4px rgb(190, 171, 177);  
box-shadow:4px 4px 4px 4px rgb(190, 171,  
177) }
```

Background

The CSS property to change the background color of an element to YUV 177.3650, -0.1799, 11.0809 is called "background". The background property can be set on classes, ids or directly on the HTML element.

```
.background, #background, body{  
background: rgb(190, 171, 177) }
```

If only the background color should be changed can be used:

```
.background{ background-color: rgb(190,  
171, 177) }
```

This example shows the color as background, it is applied via the CSS property "background".

To optimize and compress your CSS code, you can use our [online CSS compressor and optimizer](#) based on csstidy. If you want to create a linear or radial gradient as background or border, check our [CSS Gradient Generator](#).

Hey! You found this booklet interesting? Support Converting Colors with the new Membership Option!

The pro membership hides all ads, plus gives you double the colors in the color bucket, and more awesome pro features!

[Learn more, Memberships starting at \\$2.50/m!](#)

**Follow me
on Twitter!**

@ConvertingColor