

Converting Colors

YUV(177.4220, -23.3790,
32.0789)

Have a look what the booklet for
YUV(177.4220, -23.3790, 32.0789)
contains.

YUV(177.4220, -23.3790, 32.0789)	3
<i>Conversions</i>	4
<i>Details</i>	6
<i>Harmonies</i>	12
<i>Previews</i>	24
<i>Color Blindness Simulation</i>	28
<i>CSS Examples</i>	31

Color

**YUV(177.4220, -23.3790,
32.0789)**

Conversions

Conversions Part 1

Format	Color
Hex	D6A882
RGB	214, 168, 130
RGB Percent	84%, 66%, 51%
CMY	0.1608, 0.3412, 0.4902
CMYK	0.00, 0.21, 0.39, 0.16
HSL	27°, 51%, 67%
HSV	27°, 39%, 84%
XYZ	45.7635, 43.9131, 27.1832
YIQ	177.4220, 39.6140, -2.0660

Conversions

Conversions Part 2

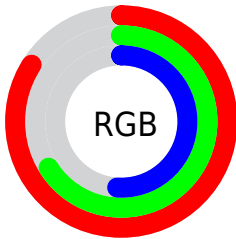
Format	Color
R _Y B	214, 199, 130
Decimal	14067842
CIE Lab	72.17, 11.84, 26.08
CIE LCh	72, 28.647, 65.577
Yxy	43.9131, 0.3916, 0.3758
Android (android.graphics.Color)	4292257922 (0xFFD6A882)
YUV	177.4220, -23.3790, 32.0789
Hunter-Lab	66.2670, 7.3035, 22.0657

Details

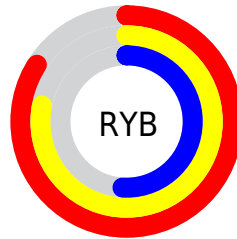
The YUV color $177.4220, -23.3790, 32.0789$ is a light color, and the websafe version is hex $CC9966$. A complement of this color would be $166.5780, 23.3790, -32.0789$, and the grayscale version is $178.0000, 0.0000, 0.0000$.

A 20% lighter version of the original color is $228.0080, -22.1889, 23.6720$, and $124.4540, -21.9158, 29.4198$ is the 20% darker color. If you saturate the color by 10%, you get $167.9840, -29.0791, 40.3560$, and if you desaturate by 10%, it is $186.8600, -17.6790, 23.8018$.

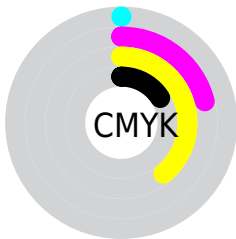
Distribution



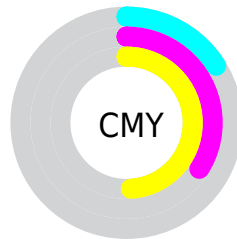
- Red (84%)
- Green (66%)
- Blue (51%)



- Red (84%)
- Yellow (78%)
- Blue (51%)



- Cyan (0%)
- Magenta (21%)
- Yellow (39%)
- Black (16%)



- Cyan (16%)
- Magenta (34%)
- Yellow (49%)

Brightness & Saturation Gradients

These gradients show how the YUV color 177.4220, -23.3790, 32.0789 changes by changing the brightness by 10 percent. The first figure shows a shift by +10% for each color and the second figure -10%.

Similar to the brightness gradients but the following saturation gradients show a change of the YUV color 177.4220, -23.3790, 32.0789 by changing the saturation by 10% instead.

■ 177.4220,
-23.3790, 32.0789

■ 177.4220,
-23.3790, 32.0789

255.0000, 0.0000,
0.0000

■ 150.6390,
-22.5000, 30.1346

■ 228.0080,
-22.1889, 23.6720

■ 124.4540,
-21.9158, 29.4198

■ 248.2230,
-18.3509, 5.9434

■ 98.7850, -20.6000,
27.3756

■ 253.1760, -6.9888,
1.5996

■ 75.0020, -19.7210,
25.4312

■ 51.2190, -18.8420,
23.4869

■ 30.8210, -15.1948,
20.3280

■ 8.9700, -4.4222,

18.4433

■ 0.0000, 0.0000,
0.0000

■ 177.4220,
-23.3790, 32.0789

■ 177.4220,
-23.3790, 32.0789

■ 167.9840,
-29.0791, 40.3560

■ 186.8600,
-17.6790, 23.8018

■ 159.0190,
-35.5054, 48.2183

■ 195.8250,
-11.2527, 15.9395

■ 149.5810,
-41.2054, 56.4955

■ 205.2630, -5.5527,
7.6623

■ 140.0290,
-47.3423, 64.8726

■ 214.8150, 0.5842,
-0.7148

■ 130.5910,
-53.0424, 73.1497

■ 224.2530, 6.2843,
-8.9919

■ 121.7400,
-59.0318, 80.9120

■ 232.7620, 10.9633,
-16.4543

■ 120.9250,
-59.6160, 81.6268

■ 239.8060, 7.4906,
-22.6319

■ 242.7410, 6.0437,
-25.2059

Harmonies

Analogous

The Analogous color harmony consists of three colors that are next to each other on the color wheel.



179.5510, -15.5546, 42.4898



177.4220, -23.3790, 32.0789



175.2580, -24.7772, 13.8057

Triad

The Triadic color harmony groups three colors that are evenly spaced from another and form a triangle on the color wheel.



177.4220, -23.3790, 32.0789



165.0320, 7.8722, -51.7711



180.1960, 19.6234, 5.9671

Complementary

The Complementary color scheme is a pair of colors which are on the opposite of each other on the color wheel.



177.4220, -23.3790, 32.0789



166.5780, 23.3790, -32.0789

Split Complementary

Split-complementary colors differ from the complementary color scheme. The scheme consists of three colors, the original color and two neighbors of the complement color.



175.7410, 26.2567, -21.6979



177.4220, -23.3790, 32.0789



163.7180, 20.8450, -59.3887

Square

The Square scheme is like the rectangle color scheme, but the four colors are evenly spaced on the color wheel.



177.4220, -23.3790, 32.0789



168.5540, -7.1751, -32.0579



168.5160, 27.3536, -46.9335



181.4780, 8.6383, 29.3988

Rectangle

The Rectangle color scheme consists of four colors that form a rectangle on the color wheel.



177.4220, -23.3790, 32.0789



172.9680, -21.6762, -0.8489



168.5160, 27.3536, -46.9335



179.1240, 22.1239, -2.7397

Sweetspot

The Sweet Spot groups the original color and five complimentary colors.



177.4220, -23.3790, 32.0789



241.4870, -8.6211, 11.8509



160.3600, 7.7105, 47.0423



120.0780, -4.9685, 6.9476



0.0000, 0.0000, 0.0000



128.0000, 0.0000, 0.0000

Same Dimension

The Same Dimension uses a secret algorithm to generate beautiful new colors.



177.4220, -23.3790, 32.0789



202.5780, -33.3160, 45.9741



202.0760, -35.5335, 10.4573



102.2240, -3.0684, 4.1886



96.3280, -47.4897, 65.4873



24.5970, -12.1263, 16.1394

Inverse Universe

The Inverse Universe completely reimagines the original color for something new.



166.5780, 23.3790, -32.0789



187.4220, 33.3160, -45.9741



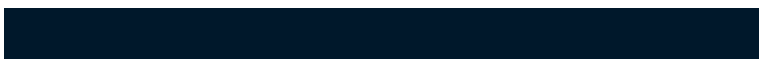
141.9240, 35.5335, -10.4573



100.7760, 3.0684, -4.1886



74.6720, 47.4897, -65.4873



18.9900, 11.8369, -16.6542

Previews

White Background



This preview shows how the YUV color 177.4220, -23.3790, 32.0789 looks on a white background.

Color Contrast Check

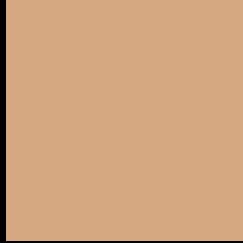
Large Text (above 18pt) WCAG AA × Fail

Any Text WCAG AA × Fail

Large Text (above 18pt) WCAG AAA × Fail

Any Text WCAG AAA × Fail

Black Background



This preview shows how the YUV color 177.4220, -23.3790, 32.0789 looks on a black background.

Color Contrast Check

Large Text (above 18pt) WCAG AA ✓ Pass

Any Text WCAG AA ✓ Pass

Large Text (above 18pt) WCAG AAA ✓ Pass

Any Text WCAG AAA ✓ Pass

If you want to check with other color combinations, try the [Color Contrast Checker](#).

YUV 177.4220, -23.3790, 32.0789

Background



This preview shows how black text looks on a background with the YUV color 177.4220, -23.3790, 32.0789.



This preview shows how white text looks on a background with the YUV color 177.4220, -23.3790,

Color Blindness Simulation

Color vision deficiency is a very complex topic, and I could not describe the different causes any better than Wikipedia does, so if you want to learn more, you should check out their [article about color blindness](#).

Dichromacy



Original Color

177.4220, -23.3790, 32.0789

Protanopia

175.9850, -20.6986, 12.2912

Deuteranopia

177.4000, -23.3682, 28.5902



Tritanopia

180.1120, -3.0132, 33.2278

Trichromacy



Original Color

177.4220, -23.3790, 32.0789

Protanomaly

176.8010, -21.5939, 19.4685

Deuteranomaly

177.1120, -23.2262, 29.7198

Tritanomaly

179.1630, -10.4334, 33.1830

Monochromacy



Original Color

177.4220, -23.3790, 32.0789

Achromatopsia

177.0000, 0.0000, 0.0000

Achromatomaly

177.1880, -8.4737, 11.2361

CSS Examples

Text

The CSS property to change the color of the text to YUV 177.4220, -23.3790, 32.0789 is called "color". The color property can be set on classes, ids or directly on the HTML element.

This example shows how text in the color `rgb(214, 168, 130)` looks like.

```
.text, #text, p{  
    color:rgb(214, 168, 130)  
}
```

If you want to add a text shadow in that color use the text-shadow property, you can generate a text shadow directly with our [CSS Text Shadow Generator](#).

Here you see how black text with a 4 pixel rgb(214, 168, 130) colored shadow looks like.

```
.shadow{ text-shadow: 4px 4px 2px rgb(214, 168, 130) }
```

Border

The CSS property to change the border of an element to YUV 177.4220, -23.3790, 32.0789 is called "border".

The border property can be set on classes, ids or directly on the HTML element.

This example shows the color as border, it can be applied via the CSS property "border" or "border-color".

```
.border, #border, table{ border:4px solid rgb(214, 168, 130) }
```


If only the border color should be changed use the property `border-color`.

```
.border{ border-color:rgb(214, 168, 130) }
```

If you want to add a box shadow in that color use:

Here you see how a box with a 4 pixel `rgb(214, 168, 130)` colored shadow looks like.

```
.boxshadow{ -moz-box-shadow:4px 4px 4px  
4px rgb(214, 168, 130); -webkit-box-  
shadow:4px 4px 4px 4px rgb(214, 168, 130);  
box-shadow:4px 4px 4px 4px rgb(214, 168,  
130) }
```

Background

The CSS property to change the background color of an element to YUV 177.4220, -23.3790, 32.0789 is called "background". The background property can be set on classes, ids or directly on the HTML element.

```
.background, #background, body{  
background: rgb(214, 168, 130) }
```

If only the background color should be changed can be used:

```
.background{ background-color: rgb(214,  
168, 130) }
```

This example shows the color as background, it is applied via the CSS property "background".

To optimize and compress your CSS code, you can use our [online CSS compressor and optimizer](#) based on csstidy. If you want to create a linear or radial gradient as background or border, check our [CSS Gradient Generator](#).

Hey! You found this booklet interesting? Support Converting Colors with the new Membership Option!

The pro membership hides all ads, plus gives you double the colors in the color bucket, and more awesome pro features!

[Learn more, Memberships starting at \\$2.50/m!](#)

**Follow me
on Twitter!**

@ConvertingColor