

Converting Colors

YUV(177.5490, -2.2427,
66.1705)

Have a look what the booklet for
YUV(177.5490, -2.2427, 66.1705)
contains.

YUV(177.5490, -2.2427, 66.1705)	3
<i>Conversions</i>	4
<i>Details</i>	6
<i>Harmonies</i>	12
<i>Previews</i>	24
<i>Color Blindness Simulation</i>	28
<i>CSS Examples</i>	31

Color

**YUV(177.5490, -2.2427,
66.1705)**

Conversions

Conversions Part 1

Format	Color
Hex	FD8CAD
RGB	253, 140, 173
RGB Percent	99%, 55%, 68%
CMY	0.0078, 0.4510, 0.3216
CMYK	0.00, 0.45, 0.32, 0.01
HSL	342°, 97%, 77%
HSV	342°, 45%, 99%
XYZ	57.4289, 42.6559, 44.7417
YIQ	177.5490, 56.7550, 34.2190

Conversions

Conversions Part 2

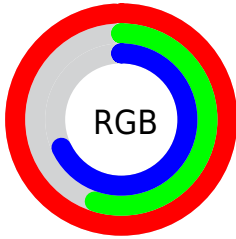
Format	Color
RYB	253, 140, 173
Decimal	16616621
CIELab	71.32, 46.32, 1.86
CIELCh	71, 46.356, 2.304
Yxy	42.6559, 0.3965, 0.2945
Android (android.graphics.Color)	4294806701 (0xFFFD8CAD)
YUV	177.5490, -2.2427, 66.1705
Hunter-Lab	65.3115, 42.6613, 5.1014

Details

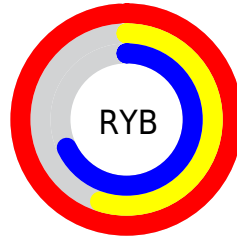
The YUV color **177.5490, -2.2427, 66.1705** is a light color, and the websafe version is hex **FF99CC**. A complement of this color would be **215.4510, 2.2427, -66.1705**, and the grayscale version is **178.0000, 0.0000, 0.0000**.

A 20% lighter version of the original color is **217.2890, 5.2805, 33.0725**, and **122.8690, -0.9214, 62.3819** is the 20% darker color. If you saturate the color by 10%, you get **160.8220, -2.8702, 80.8401**, and if you desaturate by 10%, it is **194.2760, -1.6151, 51.5009**.

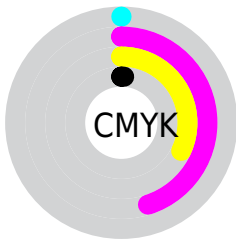
Distribution



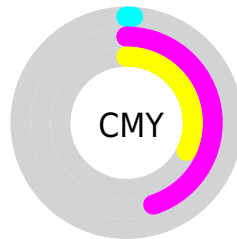
- Red (99%)
- Green (55%)
- Blue (68%)



- Red (99%)
- Yellow (55%)
- Blue (68%)



- Cyan (0%)
- Magenta (45%)
- Yellow (32%)
- Black (1%)



- Cyan (1%)
- Magenta (45%)
- Yellow (32%)

Brightness & Saturation Gradients

These gradients show how the YUV color 177.5490, -2.2427, 66.1705 changes by changing the brightness by 10 percent. The first figure shows a shift by +10% for each color and the second figure -10%.

Similar to the brightness gradients but the following saturation gradients show a change of the YUV color 177.5490, -2.2427, 66.1705 by changing the saturation by 10% instead.

 177.5490, -2.2427,
66.1705

 177.5490, -2.2427,
66.1705

255.0000, 0.0000,
0.0000


 149.6520, -1.8004,
64.3262

 217.2890, 5.2805,
33.0725


 122.8690, -0.9214,
62.3819

 236.8030, 8.9711,
15.9588

 95.4990, 0.2470,
60.9524

 253.8260, 0.5788,
1.0296

 67.6560, 2.1416,
59.9377

 37.9920, 5.9199,
61.3970

 27.5250, 0.7272,
46.8976

 17.2710, -7.5286,

34.8423

■ 5.9800, -2.9481,
12.2955

■ 0.0000, 0.0000,
0.0000

■ 177.5490, -2.2427,
66.1705

■ 177.5490, -2.2427,
66.1705

■ 160.8220, -2.8702,
80.8401

■ 194.2760, -1.6151,
51.5009

■ 143.5080, -3.2084,
96.0245

■ 211.5900, -1.2769,
36.3166

■ 126.7810, -3.8360,
110.6941

■ 228.3170, -0.6493,
21.6470

■ 110.0540, -4.4636,
125.3636

■ 245.0440, -0.0217,
6.9774

■ 93.3270, -5.0912,
140.0332

254.4020, 0.2948,
-1.2296

■ 84.0830, -4.9709,
148.1402

Harmonies

Analogous

The Analogous color harmony consists of three colors that are next to each other on the color wheel.



179.5690, 17.4675, 44.2280



177.5490, -2.2427, 66.1705



175.5110, -21.4509, 67.0809

Triad

The Triadic color harmony groups three colors that are evenly spaced from another and form a triangle on the color wheel.



177.5490, -2.2427, 66.1705



166.1550, -32.1214, -10.6599



139.3290, 54.0678, -122.1915

Complementary

The Complementary color scheme is a pair of colors which are on the opposite of each other on the color wheel.



177.5490, -2.2427, 66.1705



215.4510, 2.2427, -66.1705

Split Complementary

Split-complementary colors differ from the complementary color scheme. The scheme consists of three colors, the original color and two neighbors of the complement color.



139.3170, 38.7907, -122.1810



177.5490, -2.2427, 66.1705



158.4670, -12.0622, -51.2756

Square

The Square scheme is like the rectangle color scheme, but the four colors are evenly spaced on the color wheel.



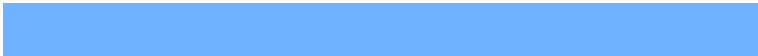
177.5490, -2.2427, 66.1705



170.7850, -40.8130, 23.8676



135.8170, 20.3032, -119.1115



166.7450, 43.5097, -48.8884

Rectangle

The Rectangle color scheme consists of four colors that form a rectangle on the color wheel.



177.5490, -2.2427, 66.1705



174.2960, -32.1909, 58.4994



135.8170, 20.3032, -119.1115



140.0640, 49.2684, -122.8361

Sweetspot

The Sweet Spot groups the original color and five complimentary colors.



177.5490, -2.2427, 66.1705



233.0070, -0.4965, 19.2879



176.5030, 37.7130, 37.2699



113.9630, -0.4748, 12.3104



0.0000, 0.0000, 0.0000



128.0000, 0.0000, 0.0000

Same Dimension

The Same Dimension uses a secret algorithm to generate beautiful new colors.



177.5490, -2.2427, 66.1705



162.9360, -2.4334, 80.7401



187.2880, -23.3130, 57.6294



119.2290, -0.6059, 7.6922



63.4930, -3.6940, 111.8236



21.3020, -1.1349, 37.4461

Inverse Universe

The Inverse Universe completely reimagines the original color for something new.



177.5490, -2.2427, 66.1705



162.9360, -2.4334, 80.7401



205.7120, 23.3130, -57.6294



119.2290, -0.6059, 7.6922



63.4930, -3.6940, 111.8236



21.3020, -1.1349, 37.4461

Previews

White Background



This preview shows how the YUV color 177.5490, -2.2427, 66.1705 looks on a white background.

Color Contrast Check

Large Text (above 18pt) WCAG AA × Fail

Any Text WCAG AA × Fail

Large Text (above 18pt) WCAG AAA × Fail

Any Text WCAG AAA × Fail

Black Background



This preview shows how the YUV color 177.5490, -2.2427, 66.1705 looks on a black background.

Color Contrast Check

Large Text (above 18pt) WCAG AA ✓ Pass

Any Text WCAG AA ✓ Pass

Large Text (above 18pt) WCAG AAA ✓ Pass

Any Text WCAG AAA ✓ Pass

If you want to check with other color combinations, try the [Color Contrast Checker](#).

YUV 177.5490, -2.2427, 66.1705

Background



This preview shows how black text looks on a background with the YUV color 177.5490, -2.2427, 66.1705.



This preview shows how white text looks on a background with the YUV color 177.5490, -2.2427,

Color Blindness Simulation

Color vision deficiency is a very complex topic, and I could not describe the different causes any better than Wikipedia does, so if you want to learn more, you should check out their [article about color blindness](#).

Dichromacy



Original Color

177.5490, -2.2427, 66.1705

Protanopia

175.8670, 8.4466, -2.5144

Deuteranopia

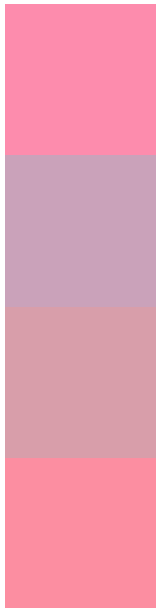
176.6600, -4.2694, 16.0842



Tritanopia

176.5460, -11.1152, 65.2962

Trichromacy



Original Color

177.5490, -2.2427, 66.1705

Protanomaly

176.6960, 4.5869, 22.1916

Deuteranomaly

176.7100, -3.3080, 34.4573

Tritanomaly

177.0560, -7.9156, 65.7259

Monochromacy



Original Color

177.5490, -2.2427, 66.1705

Achromatopsia

178.0000, 0.0000, 0.0000

Achromatomaly

177.6270, -0.8021, 24.0061

CSS Examples

Text

The CSS property to change the color of the text to YUV 177.5490, -2.2427, 66.1705 is called "color". The color property can be set on classes, ids or directly on the HTML element.

This example shows how text in the color `rgb(253, 140, 173)` looks like.

```
.text, #text, p{  
    color:rgb(253, 140, 173)  
}
```

If you want to add a text shadow in that color use the text-shadow property, you can generate a text shadow directly with our [CSS Text Shadow Generator](#).

Here you see how black text with a 4 pixel rgb(253, 140, 173) colored shadow looks like.

```
.shadow{ text-shadow: 4px 4px 2px rgb(253, 140, 173) }
```

Border

The CSS property to change the border of an element to YUV 177.5490, -2.2427, 66.1705 is called "border". The border property can be set on classes, ids or directly on the HTML element.

This example shows the color as border, it can be applied via the CSS property "border" or "border-color".

```
.border, #border, table{ border:4px solid rgb(253, 140, 173) }
```


If only the border color should be changed use the property `border-color`.

```
.border{ border-color:rgb(253, 140, 173) }
```

If you want to add a box shadow in that color use:

Here you see how a box with a 4 pixel `rgb(253, 140, 173)` colored shadow looks like.

```
.boxshadow{ -moz-box-shadow:4px 4px 4px  
4px rgb(253, 140, 173); -webkit-box-  
shadow:4px 4px 4px 4px rgb(253, 140, 173);  
box-shadow:4px 4px 4px 4px rgb(253, 140,  
173) }
```

Background

The CSS property to change the background color of an element to YUV 177.5490, -2.2427, 66.1705 is called "background". The background property can be set on classes, ids or directly on the HTML element.

```
.background, #background, body{  
background: rgb(253, 140, 173) }
```

If only the background color should be changed can be used:

```
.background{ background-color: rgb(253,  
140, 173) }
```

This example shows the color as background, it is applied via the CSS property "background".

To optimize and compress your CSS code, you can use our [online CSS compressor and optimizer](#) based on csstidy. If you want to create a linear or radial gradient as background or border, check our [CSS Gradient Generator](#).

Hey! You found this booklet interesting? Support Converting Colors with the new Membership Option!

The pro membership hides all ads, plus gives you double the colors in the color bucket, and more awesome pro features!

[Learn more, Memberships starting at \\$2.50/m!](#)

**Follow me
on Twitter!**

@ConvertingColor