

Converting Colors

YUV(177.8550, -16.6905,
33.4532)

Have a look what the booklet for
YUV(177.8550, -16.6905, 33.4532)
contains.

YUV(177.8550, -16.6905, 33.4532)	3
<i>Conversions</i>	4
<i>Details</i>	6
<i>Harmonies</i>	12
<i>Previews</i>	24
<i>Color Blindness Simulation</i>	28
<i>CSS Examples</i>	31

Color

**YUV(177.8550, -16.6905,
33.4532)**

Conversions

Conversions Part 1

Format	Color
Hex	D8A590
RGB	216, 165, 144
RGB Percent	85%, 65%, 56%
CMY	0.1529, 0.3529, 0.4353
CMYK	0.00, 0.24, 0.33, 0.15
HSL	18°, 48%, 71%
HSV	18°, 33%, 85%
XYZ	46.8081, 43.5228, 32.3192
YIQ	177.8550, 37.1370, 4.2810

Conversions

Conversions Part 2

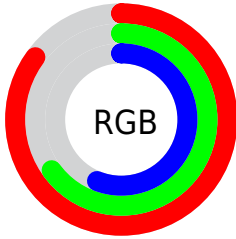
Format	Color
R _Y B	216, 174, 144
Decimal	14198160
CIE Lab	71.91, 15.93, 18.15
CIE LCh	72, 24.154, 48.727
Yxy	43.5228, 0.3816, 0.3549
Android (android.graphics.Color)	4292388240 (0xFFD8A590)
YUV	177.8550, -16.6905, 33.4532
Hunter-Lab	65.9718, 11.1980, 17.1344

Details

The YUV color $177.8550, -16.6905, 33.4532$ is a light color, and the websafe version is hex $CC9999$. A complement of this color would be $182.1450, 16.6905, -33.4532$, and the grayscale version is $178.0000, 0.0000, 0.0000$.

A 20% lighter version of the original color is $227.9570, -14.7688, 23.7167$, and $124.8870, -15.2273, 30.7941$ is the 20% darker color. If you saturate the color by 10%, you get $166.5420, -21.9592, 43.3747$, and if you desaturate by 10%, it is $189.1680, -11.4218, 23.5317$.

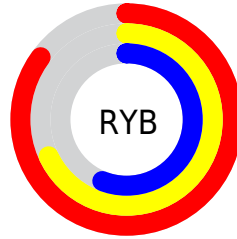
Distribution



Red (85%)

Green (65%)

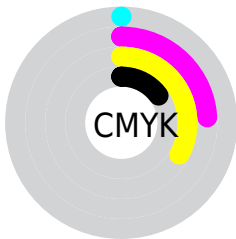
Blue (56%)



Red (85%)

Yellow (68%)

Blue (56%)

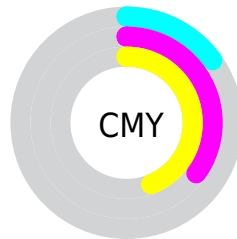


Cyan (0%)

Magenta (24%)

Yellow (33%)

Black (15%)



Cyan (15%)

Magenta (35%)

Yellow (44%)

Brightness & Saturation Gradients

These gradients show how the YUV color 177.8550, -16.6905, 33.4532 changes by changing the brightness by 10 percent. The first figure shows a shift by +10% for each color and the second figure -10%.

Similar to the brightness gradients but the following saturation gradients show a change of the YUV color 177.8550, -16.6905, 33.4532 by changing the saturation by 10% instead.

■ 177.8550,
-16.6905, 33.4532

■ 177.8550,
-16.6905, 33.4532

255.0000, 0.0000,
0.0000

■ 151.2570,
-16.3957, 32.2236

■ 227.9570,
-14.7688, 23.7167

■ 124.8870,
-15.2273, 30.7941

■ 248.1720,
-10.9308, 5.9882

■ 99.4030, -14.4957,
29.4646

■ 75.2070, -13.9061,
27.0055

■ 51.8370, -12.7376,
25.5760

■ 29.0710, -14.3320,
23.6167

■ 10.1660, -5.0118,

20.9024

■ 0.0000, 0.0000,
0.0000

■ 177.8550,
-16.6905, 33.4532

■ 177.8550,
-16.6905, 33.4532

■ 166.5420,
-21.9592, 43.3747

■ 189.1680,
-11.4218, 23.5317

■ 154.7560,
-26.5017, 53.7110

■ 200.9540, -6.8793,
13.1953

■ 143.4430,
-31.7704, 63.6325

■ 212.2670, -1.6106,
3.2738

■ 132.2440,
-36.6023, 73.4540

■ 223.4660, 3.2213,
-6.5477

■ 120.9310,
-41.8710, 83.3755

■ 235.3660, 8.2006,
-16.9840

■ 109.0310,
-46.8503, 93.8118

■ 243.3390, 5.7489,
-23.9763

■ 101.5650,
-50.0715, 100.3595

Harmonies

Analogous

The Analogous color harmony consists of three colors that are next to each other on the color wheel.



179.4670, -8.1182, 37.3014



177.8550, -16.6905, 33.4532



175.9260, -21.1625, 21.1129

Triad

The Triadic color harmony groups three colors that are evenly spaced from another and form a triangle on the color wheel.



177.8550, -16.6905, 33.4532



167.9650, -0.4757, -34.1723



176.9340, 20.2455, -6.9581

Complementary

The Complementary color scheme is a pair of colors which are on the opposite of each other on the color wheel.



177.8550, -16.6905, 33.4532



182.1450, 16.6905, -33.4532

Split Complementary

Split-complementary colors differ from the complementary color scheme. The scheme consists of three colors, the original color and two neighbors of the complement color.



172.7740, 22.7894, -29.6198



177.8550, -16.6905, 33.4532



166.6890, 11.4923, -46.2083

Square

The Square scheme is like the rectangle color scheme, but the four colors are evenly spaced on the color wheel.



177.8550, -16.6905, 33.4532



171.1000, -11.8813, -15.8737



167.9910, 20.2174, -44.7191



179.4160, 12.6129, 14.5442

Rectangle

The Rectangle color scheme consists of four colors that form a rectangle on the color wheel.



177.8550, -16.6905, 33.4532



174.6750, -20.5458, 9.9320



167.9910, 20.2174, -44.7191



175.8190, 21.2882, -14.7503

Sweetspot

The Sweet Spot groups the original color and five complimentary colors.



177.8550, -16.6905, 33.4532



241.5840, -5.7109, 11.7658



171.4560, 12.1002, 39.0651



119.7190, -3.8055, 7.2624



0.0000, 0.0000, 0.0000



128.0000, 0.0000, 0.0000

Same Dimension

The Same Dimension uses a secret algorithm to generate beautiful new colors.



177.8550, -16.6905, 33.4532



201.1080, -23.7172, 47.2633



198.4000, -26.8192, 15.4352



101.6370, -2.7790, 4.7034



80.4790, -39.6761, 79.3869



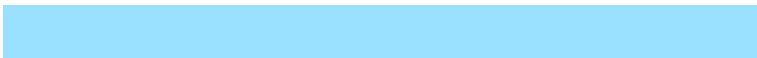
20.4880, -10.1006, 19.7430

Inverse Universe

The Inverse Universe completely reimagines the original color for something new.



182.1450, 16.6905, -33.4532



206.8920, 23.7172, -47.2633



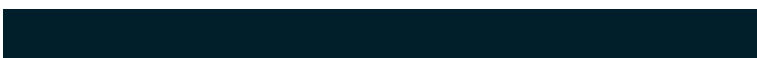
161.6000, 26.8192, -15.4352



101.9500, 2.4897, -5.2181



90.5210, 39.6761, -79.3869



23.0990, 9.8112, -20.2578

Previews

White Background



This preview shows how the YUV color 177.8550, -16.6905, 33.4532 looks on a white background.

Color Contrast Check

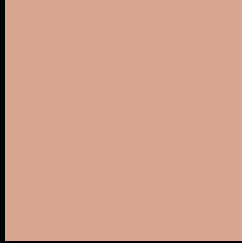
Large Text (above 18pt) WCAG AA × Fail

Any Text WCAG AA × Fail

Large Text (above 18pt) WCAG AAA × Fail

Any Text WCAG AAA × Fail

Black Background



This preview shows how the YUV color 177.8550, -16.6905, 33.4532 looks on a black background.

Color Contrast Check

Large Text (above 18pt) WCAG AA ✓ Pass

Any Text WCAG AA ✓ Pass

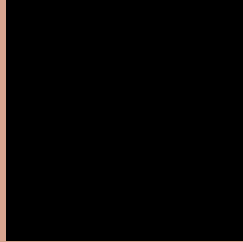
Large Text (above 18pt) WCAG AAA ✓ Pass

Any Text WCAG AAA ✓ Pass

If you want to check with other color combinations, try the [Color Contrast Checker](#).

YUV 177.8550, -16.6905, 33.4532

Background



This preview shows how black text looks on a background with the YUV color 177.8550, -16.6905, 33.4532.



This preview shows how white text looks on a background with the YUV color 177.8550, -16.6905,

33.4532.

Color Blindness Simulation

Color vision deficiency is a very complex topic, and I could not describe the different causes any better than Wikipedia does, so if you want to learn more, you should check out their [article about color blindness](#).

Dichromacy



Original Color

177.8550, -16.6905, 33.4532

Protanopia

175.9120, -13.2676, 8.8472

Deuteranopia

177.3870, -16.9528, 24.2166



Tritanopia

179.7100, -3.3080, 34.4573

Trichromacy



Original Color

177.8550, -16.6905, 33.4532

Protanomaly

176.6250, -14.6051, 17.8689

Deuteranomaly

177.4090, -16.9636, 27.7053

Tritanomaly

178.7440, -8.2548, 34.4275

Monochromacy



Original Color

177.8550, -16.6905, 33.4532

Achromatopsia

178.0000, 0.0000, 0.0000

Achromatomaly

177.8830, -5.8583, 12.3806

CSS Examples

Text

The CSS property to change the color of the text to YUV 177.8550, -16.6905, 33.4532 is called "color". The color property can be set on classes, ids or directly on the HTML element.

This example shows how text in the color `rgb(216, 165, 144)` looks like.

```
.text, #text, p{  
    color:rgb(216, 165, 144)  
}
```

If you want to add a text shadow in that color use the text-shadow property, you can generate a text shadow directly with our [CSS Text Shadow Generator](#).

Here you see how black text with a 4 pixel rgb(216, 165, 144) colored shadow looks like.

```
.shadow{ text-shadow: 4px 4px 2px rgb(216, 165, 144) }
```

Border

The CSS property to change the border of an element to YUV 177.8550, -16.6905, 33.4532 is called "border".

The border property can be set on classes, ids or directly on the HTML element.

This example shows the color as border, it can be applied via the CSS property "border" or "border-color".

```
.border, #border, table{ border:4px solid rgb(216, 165, 144) }
```


If only the border color should be changed use the property `border-color`.

```
.border{ border-color:rgb(216, 165, 144) }
```

If you want to add a box shadow in that color use:

Here you see how a box with a 4 pixel `rgb(216, 165, 144)` colored shadow looks like.

```
.boxshadow{ -moz-box-shadow:4px 4px 4px 4px rgb(216, 165, 144); -webkit-box-shadow:4px 4px 4px 4px rgb(216, 165, 144); box-shadow:4px 4px 4px 4px rgb(216, 165, 144) }
```

Background

The CSS property to change the background color of an element to YUV 177.8550, -16.6905, 33.4532 is called "background". The background property can be set on classes, ids or directly on the HTML element.

```
.background, #background, body{  
background: rgb(216, 165, 144) }
```

If only the background color should be changed can be used:

```
.background{ background-color: rgb(216,  
165, 144) }
```

This example shows the color as background, it is applied via the CSS property "background".

To optimize and compress your CSS code, you can use our [online CSS compressor and optimizer](#) based on csstidy. If you want to create a linear or radial gradient as background or border, check our [CSS Gradient Generator](#).

Hey! You found this booklet interesting? Support Converting Colors with the new Membership Option!

The pro membership hides all ads, plus gives you double the colors in the color bucket, and more awesome pro features!

[Learn more, Memberships starting at \\$2.50/m!](#)

**Follow me
on Twitter!**

@ConvertingColor