

# Converting Colors

YUV(177.9020, -11.2907,  
28.1499)

Have a look what the booklet for  
YUV(177.9020, -11.2907, 28.1499)  
contains.

<b>YUV(177.9020, -11.2907, 28.1499)</b> .....	3
<b><i>Conversions</i></b> .....	4
<b><i>Details</i></b> .....	6
<b><i>Harmonies</i></b> .....	12
<b><i>Previews</i></b> .....	24
<b><i>Color Blindness Simulation</i></b> .....	28
<b><i>CSS Examples</i></b> .....	31

# Color

**YUV(177.9020, -11.2907,  
28.1499)**

# Conversions

## Conversions Part 1

Format	Color
Hex	D2A69B
RGB	210, 166, 155
RGB Percent	82%, 65%, 61%
CMY	0.1765, 0.3490, 0.3922
CMYK	0.00, 0.21, 0.26, 0.18
HSL	12°, 38%, 72%
HSV	12°, 26%, 82%
XYZ	46.1310, 43.3406, 36.9446
YIQ	177.9020, 29.7550, 5.9070

# Conversions

## Conversions Part 2

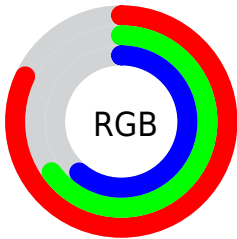
<b>Format</b>	<b>Color</b>
<b>R<sub>YB</sub></b>	210, 169, 155
Decimal	13805211
CIE Lab	71.79, 14.55, 11.86
CIE LCh	72, 18.770, 39.183
Yxy	43.3406, 0.3649, 0.3428
Android (android.graphics.Color)	4291995291 (0xFFD2A69B)
YUV	177.9020, -11.2907, 28.1499
Hunter-Lab	65.8336, 9.8698, 12.8111

# Details

The YUV color  $177.9020, -11.2907, 28.1499$  is a light color, and the websafe version is hex  $CC9999$ . A complement of this color would be  $187.0980, 11.2907, -28.1499$ , and the grayscale version is  $178.0000, 0.0000, 0.0000$ .

A 20% lighter version of the original color is  $229.7980, -10.2534, 22.1022$ , and  $125.1190, -10.4117, 26.2056$  is the 20% darker color. If you saturate the color by 10%, you get  $165.5290, -15.5438, 39.0011$ , and if you desaturate by 10%, it is  $190.2750, -7.0376, 17.2988$ .

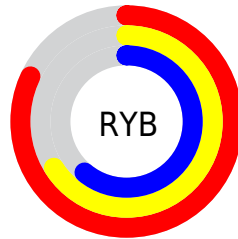
# Distribution



Red (82%)

Green (65%)

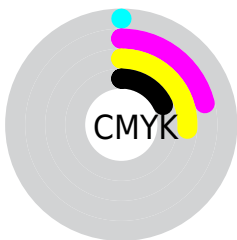
Blue (61%)



Red (82%)

Yellow (66%)

Blue (61%)

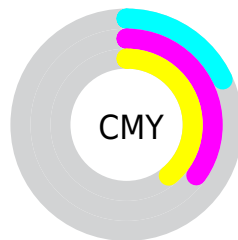


Cyan (0%)

Magenta (21%)

Yellow (26%)

Black (18%)



Cyan (18%)

Magenta (35%)

Yellow (39%)

# Brightness & Saturation Gradients

These gradients show how the YUV color 177.9020, -11.2907, 28.1499 changes by changing the brightness by 10 percent. The first figure shows a shift by +10% for each color and the second figure -10%.

Similar to the brightness gradients but the following saturation gradients show a change of the YUV color 177.9020, -11.2907, 28.1499 by changing the saturation by 10% instead.



■ 177.9020,  
-11.2907, 28.1499

■ 177.9020,  
-11.2907, 28.1499

255.0000, 0.0000,  
0.0000

■ 151.3040,  
-10.9959, 26.9204

■ 229.7980,  
-10.2534, 22.1022

■ 125.1190,  
-10.4117, 26.2056

■ 250.1270, -5.9786,  
4.2736

■ 99.6350, -9.6801,  
24.8761

■ 75.7380, -9.2378,  
23.0318

■ 52.2540, -8.5062,  
21.7022

■ 30.3570, -8.0640,  
19.8579

■ 9.5680, -4.7170,

19.6729

■ 0.0000, 0.0000,  
0.0000

■ 177.9020,  
-11.2907, 28.1499

■ 177.9020,  
-11.2907, 28.1499

■ 165.5290,  
-15.5438, 39.0011

■ 190.2750, -7.0376,  
17.2988

■ 153.1560,  
-19.7969, 49.8522

■ 202.6480, -2.7845,  
6.4477

■ 141.3700,  
-24.3394, 60.1885

■ 214.4340, 1.7580,  
-3.8886

■ 128.9970,  
-28.5925, 71.0396

■ 226.8070, 6.0111,  
-14.7397

■ 116.6240,  
-32.8456, 81.8908

■ 238.6100, 8.0803,  
-25.0910

■ 104.2510,  
-37.0987, 92.7419

■ 241.5450, 6.6333,  
-27.6650

■ 91.8780, -41.3519,  
103.5930

■ 87.4440, -43.1099,  
107.4816

# Harmonies

## Analogous

The Analogous color harmony consists of three colors that are next to each other on the color wheel.



178.8510, -3.8705, 28.1947



177.9020, -11.2907, 28.1499



176.5930, -16.0683, 20.5279

# Triad

The Triadic color harmony groups three colors that are evenly spaced from another and form a triangle on the color wheel.



177.9020, -11.2907, 28.1499



170.8310, -3.8607, -21.7768



175.8750, 16.3306, -11.2914

# Complementary

The Complementary color scheme is a pair of colors which are on the opposite of each other on the color wheel.



177.9020, -11.2907, 28.1499



187.0980, 11.2907, -28.1499

# Split Complementary

Split-complementary colors differ from the complementary color scheme. The scheme consists of three colors, the original color and two neighbors of the complement color.



172.3030, 17.1056, -26.5757



177.9020, -11.2907, 28.1499



169.2840, 5.7760, -32.6981

# Square

The Square scheme is like the rectangle color scheme, but the four colors are evenly spaced on the color wheel.



177.9020, -11.2907, 28.1499



172.2690, -11.4716, -7.2519



170.2220, 13.2016, -34.3977



178.4320, 11.6190, 6.6371



# Rectangle

The Rectangle color scheme consists of four colors that form a rectangle on the color wheel.



177.9020, -11.2907, 28.1499



175.7230, -16.6254, 12.5209



170.2220, 13.2016, -34.3977



175.0700, 17.2205, -16.7244

# Sweetspot

The Sweet Spot groups the original color and five complimentary colors.



177.9020, -11.2907, 28.1499



243.3280, -4.1057, 10.2363



176.4610, 11.1117, 29.4137



120.0610, -2.4951, 6.9625



0.0000, 0.0000, 0.0000



128.0000, 0.0000, 0.0000



# Same Dimension

The Same Dimension uses a secret algorithm to generate beautiful new colors.



177.9020, -11.2907, 28.1499



209.0130, -16.2754, 40.3306



194.3380, -19.3936, 13.7356



98.4630, -2.2003, 5.7329



70.1900, -34.6037, 85.7794



16.9550, -8.3588, 21.0875

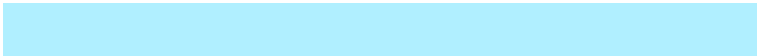


# Inverse Universe

The Inverse Universe completely reimagines the original color for something new.



187.0980, 11.2907, -28.1499



221.9870, 16.2754, -40.3306



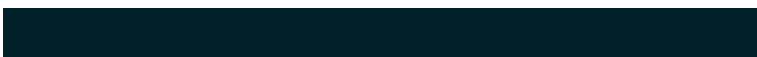
170.6620, 19.3936, -13.7356



99.9500, 2.4897, -5.2181



98.3970, 34.3143, -86.2942



24.0450, 8.3588, -21.0875



# Previews

## White Background



This preview shows how the YUV color 177.9020, -11.2907, 28.1499 looks on a white background.

## Color Contrast Check

Large Text (above 18pt) WCAG AA × Fail

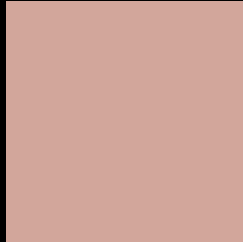
Any Text WCAG AA × Fail

Large Text (above 18pt) WCAG AAA × Fail

Any Text WCAG AAA × Fail



# Black Background



This preview shows how the YUV color 177.9020, -11.2907, 28.1499 looks on a black background.

## Color Contrast Check

Large Text (above 18pt) WCAG AA ✓ Pass

Any Text WCAG AA ✓ Pass

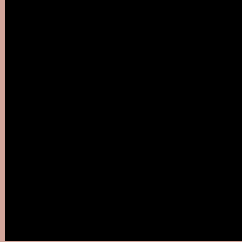
Large Text (above 18pt) WCAG AAA ✓ Pass

Any Text WCAG AAA ✓ Pass

If you want to check with other color combinations, try the [Color Contrast Checker](#).

# YUV 177.9020, -11.2907, 28.1499

## Background



This preview shows how black text looks on a background with the YUV color 177.9020, -11.2907, 28.1499.



This preview shows how white text looks on a background with the YUV color 177.9020, -11.2907,



# Color Blindness Simulation

Color vision deficiency is a very complex topic, and I could not describe the different causes any better than Wikipedia does, so if you want to learn more, you should check out their [article about color blindness](#).

## Dichromacy



### Original Color

177.9020, -11.2907, 28.1499

### Protanopia

176.2690, -8.0206, 5.9031

### Deuteranopia

177.4450, -11.5584, 20.6577



## Tritanopia

179.1330, -1.5446, 28.8244

# Trichromacy



## Original Color

177.9020, -11.2907, 28.1499

## Protanomaly

176.6830, -9.2107, 14.3100

## Deuteranomaly

177.7550, -11.7112, 23.0169

## Tritanomaly

178.5090, -5.1809, 28.4946

# Monochromacy



## Original Color

177.9020, -11.2907, 28.1499

## Achromatopsia

178.0000, 0.0000, 0.0000

## Achromatomaly

178.3280, -4.1057, 10.2363

# CSS Examples

## Text

The CSS property to change the color of the text to YUV 177.9020, -11.2907, 28.1499 is called "color". The color property can be set on classes, ids or directly on the HTML element.

This example shows how text in the color `rgb(210, 166, 155)` looks like.

```
.text, #text, p{  
    color:rgb(210, 166, 155)  
}
```

If you want to add a text shadow in that color use the text-shadow property, you can generate a text shadow directly with our [CSS Text Shadow Generator](#).

Here you see how black text with a 4 pixel rgb(210, 166, 155) colored shadow looks like.

```
.shadow{ text-shadow: 4px 4px 2px rgb(210, 166, 155) }
```

## Border

The CSS property to change the border of an element to YUV 177.9020, -11.2907, 28.1499 is called "border".

The border property can be set on classes, ids or directly on the HTML element.

This example shows the color as border, it can be applied via the CSS property "border" or "border-color".

```
.border, #border, table{ border:4px solid rgb(210, 166, 155) }
```



If only the border color should be changed use the property `border-color`.

```
.border{ border-color:rgb(210, 166, 155) }
```

If you want to add a box shadow in that color use:

Here you see how a box with a 4 pixel `rgb(210, 166, 155)` colored shadow looks like.

```
.boxshadow{ -moz-box-shadow:4px 4px 4px  
4px rgb(210, 166, 155); -webkit-box-  
shadow:4px 4px 4px 4px rgb(210, 166, 155);  
box-shadow:4px 4px 4px 4px rgb(210, 166,  
155) }
```

# Background

The CSS property to change the background color of an element to YUV 177.9020, -11.2907, 28.1499 is called "background". The background property can be set on classes, ids or directly on the HTML element.

```
.background, #background, body{  
background: rgb(210, 166, 155) }
```

If only the background color should be changed can be used:

```
.background{ background-color: rgb(210,  
166, 155) }
```

This example shows the color as background, it is applied via the CSS property "background".

To optimize and compress your CSS code, you can use our [online CSS compressor and optimizer](#) based on csstidy. If you want to create a linear or radial gradient as background or border, check our [CSS Gradient Generator](#).

Hey! You found this booklet interesting? Support Converting Colors with the new Membership Option!

The pro membership hides all ads, plus gives you double the colors in the color bucket, and more awesome pro features!

**[Learn more, Memberships starting at \\$2.50/m!](#)**

**Follow me  
on Twitter!**

@ConvertingColor