

Converting Colors

YUV(178.0060, -15.7790,
21.0427)

Have a look what the booklet for
YUV(178.0060, -15.7790, 21.0427)
contains.

YUV(178.0060, -15.7790, 21.0427)	3
<i>Conversions</i>	4
<i>Details</i>	6
<i>Harmonies</i>	12
<i>Previews</i>	24
<i>Color Blindness Simulation</i>	28
<i>CSS Examples</i>	31

Color

**YUV(178.0060, -15.7790,
21.0427)**

Conversions

Conversions Part 1

Format	Color
Hex	CAAC92
RGB	202, 172, 146
RGB Percent	79%, 67%, 57%
CMY	0.2078, 0.3255, 0.4275
CMYK	0.00, 0.15, 0.28, 0.21
HSL	28°, 35%, 68%
HSV	28°, 28%, 79%
XYZ	44.2980, 44.1369, 33.3787
YIQ	178.0060, 26.2260, -1.7260

Conversions

Conversions Part 2

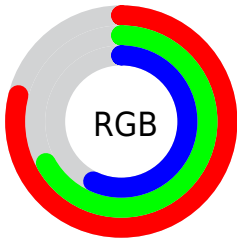
Format	Color
RYB	202, 195, 146
Decimal	13282450
CIELab	72.32, 6.97, 17.42
CIELCh	72, 18.764, 68.190
Yxy	44.1369, 0.3637, 0.3623
Android (android.graphics.Color)	4291472530 (0xFFCAAC92)
YUV	178.0060, -15.7790, 21.0427
Hunter-Lab	66.4356, 2.7579, 16.7164

Details

The YUV color **178.0060, -15.7790, 21.0427** is a light color, and the websafe version is hex **CC9999**. A complement of this color would be **169.9940, 15.7790, -21.0427**, and the grayscale version is **178.0000, 0.0000, 0.0000**.

A 20% lighter version of the original color is **232.2940, -15.9209, 19.9132**, and **125.2230, -14.8999, 19.0984** is the 20% darker color. If you saturate the color by 10%, you get **169.2690, -21.3316, 28.7051**, and if you desaturate by 10%, it is **186.7430, -10.2263, 13.3804**.

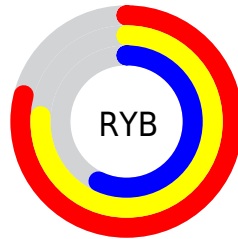
Distribution



Red (79%)

Green (67%)

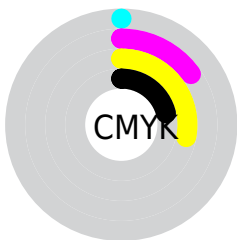
Blue (57%)



Red (79%)

Yellow (76%)

Blue (57%)

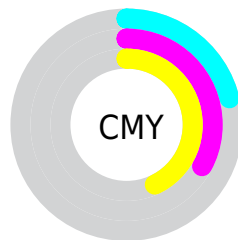


Cyan (0%)

Magenta (15%)

Yellow (28%)

Black (21%)



Cyan (21%)

Magenta (33%)

Yellow (43%)

Brightness & Saturation Gradients

These gradients show how the YUV color 178.0060, -15.7790, 21.0427 changes by changing the brightness by 10 percent. The first figure shows a shift by +10% for each color and the second figure -10%.

Similar to the brightness gradients but the following saturation gradients show a change of the YUV color 178.0060, -15.7790, 21.0427 by changing the saturation by 10% instead.

■ 178.0060,
-15.7790, 21.0427

■ 178.0060,
-15.7790, 21.0427

255.0000, 0.0000,
0.0000

■ 150.8210,
-15.1948, 20.3280

■ 232.2940,
-15.9209, 19.9132

■ 125.2230,
-14.8999, 19.0984

■ 251.9220,
-11.7935, 2.6994

■ 100.1520,
-13.8789, 18.2837

■ 75.6680, -13.1473,
16.9542

■ 53.1840, -12.4157,
15.6246

■ 31.1300, -13.8681,
14.7950

■ 9.2360, -4.5533,

13.8250

■ 0.0000, 0.0000,
0.0000

■ 178.0060,
-15.7790, 21.0427

■ 178.0060,
-15.7790, 21.0427

■ 169.2690,
-21.3316, 28.7051

■ 186.7430,
-10.2263, 13.3804

■ 160.5320,
-26.8843, 36.3674

■ 195.4800, -4.6736,
5.7180

■ 152.2680,
-33.1631, 43.6150

■ 203.7440, 1.6052,
-1.5295

■ 143.5310,
-38.7158, 51.2773

■ 212.4810, 7.1579,
-9.1918

■ 134.7940,
-44.2684, 58.9397

■ 221.2180, 12.7105,
-16.8542

■ 126.0570,
-49.8211, 66.6020

■ 228.5870, 13.0216,
-23.3168

■ 117.3200,
-55.3738, 74.2644

■ 235.0440, 9.8383,
-28.9796

■ 115.5760,
-56.9790, 75.7938

■ 239.1530, 7.8126,
-32.5832

Harmonies

Analogous

The Analogous color harmony consists of three colors that are next to each other on the color wheel.



179.3150, -11.0013, 28.6647



178.0060, -15.7790, 21.0427



176.4020, -16.4672, 8.4174

Triad

The Triadic color harmony groups three colors that are evenly spaced from another and form a triangle on the color wheel.



178.0060, -15.7790, 21.0427



170.5830, 5.6286, -32.0833



179.2470, 12.2032, 5.9224

Complementary

The Complementary color scheme is a pair of colors which are on the opposite of each other on the color wheel.



178.0060, -15.7790, 21.0427



169.9940, 15.7790, -21.0427

Split Complementary

Split-complementary colors differ from the complementary color scheme. The scheme consists of three colors, the original color and two neighbors of the complement color.



176.9890, 16.7674, -11.3914



178.0060, -15.7790, 21.0427



171.2220, 13.2016, -34.3977

Square

The Square scheme is like the rectangle color scheme, but the four colors are evenly spaced on the color wheel.



178.0060, -15.7790, 21.0427



172.1300, -4.0081, -21.1620



174.0040, 17.2530, -27.1905



180.6850, 4.5923, 20.4473

Rectangle

The Rectangle color scheme consists of four colors that form a rectangle on the color wheel.



178.0060, -15.7790, 21.0427



174.7320, -13.6719, -1.5190



174.0040, 17.2530, -27.1905



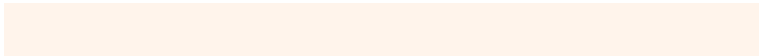
178.6700, 13.9667, 0.2894

Sweetspot

The Sweet Spot groups the original color and five complimentary colors.



178.0060, -15.7790, 21.0427



246.2630, -5.5527, 7.6623



166.2780, 5.2859, 31.3282



122.4090, -3.6526, 4.9033



0.0000, 0.0000, 0.0000



128.0000, 0.0000, 0.0000

Same Dimension

The Same Dimension uses a secret algorithm to generate beautiful new colors.



178.0060, -15.7790, 21.0427



219.0090, -23.6684, 31.5641



193.8550, -23.5925, 7.1432



97.9250, -2.9210, 3.5738



94.8330, -46.7527, 62.4135



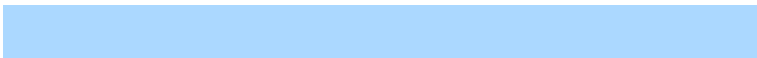
21.9280, -10.8105, 14.0951

Inverse Universe

The Inverse Universe completely reimagines the original color for something new.



169.9940, 15.7790, -21.0427



206.9910, 23.6684, -31.5641



154.1450, 23.5925, -7.1432



96.0750, 2.9210, -3.5738



71.1670, 46.7527, -62.4135



16.0720, 10.8105, -14.0951

Previews

White Background



This preview shows how the YUV color 178.0060, -15.7790, 21.0427 looks on a white background.

Color Contrast Check

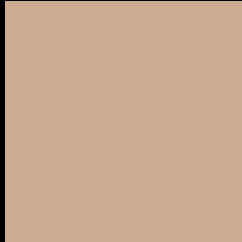
Large Text (above 18pt) WCAG AA × Fail

Any Text WCAG AA × Fail

Large Text (above 18pt) WCAG AAA × Fail

Any Text WCAG AAA × Fail

Black Background



This preview shows how the YUV color 178.0060, -15.7790, 21.0427 looks on a black background.

Color Contrast Check

Large Text (above 18pt) WCAG AA ✓ Pass

Any Text WCAG AA ✓ Pass

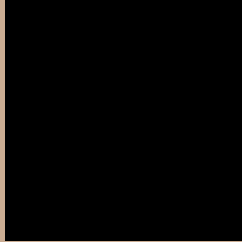
Large Text (above 18pt) WCAG AAA ✓ Pass

Any Text WCAG AAA ✓ Pass

If you want to check with other color combinations, try the [Color Contrast Checker](#).

YUV 178.0060, -15.7790, 21.0427

Background



This preview shows how black text looks on a background with the YUV color 178.0060, -15.7790, 21.0427.



This preview shows how white text looks on a background with the YUV color 178.0060, -15.7790, 21.0427.

Color Blindness Simulation

Color vision deficiency is a very complex topic, and I could not describe the different causes any better than Wikipedia does, so if you want to learn more, you should check out their [article about color blindness](#).

Dichromacy



Original Color

178.0060, -15.7790, 21.0427

Protanopia

176.6840, -14.1412, 9.0471

Deuteranopia

178.3160, -15.9318, 23.4019



Tritanopia

180.1430, -0.0705, 22.6766

Trichromacy



Original Color

178.0060, -15.7790, 21.0427

Protanomaly

176.8910, -14.7363, 13.2506

Deuteranomaly

178.0170, -15.7844, 22.7871

Tritanomaly

179.6500, -5.7434, 22.2320

Monochromacy



Original Color

178.0060, -15.7790, 21.0427

Achromatopsia

178.0000, 0.0000, 0.0000

Achromatomaly

178.1490, -5.9895, 7.7623

CSS Examples

Text

The CSS property to change the color of the text to YUV 178.0060, -15.7790, 21.0427 is called "color". The color property can be set on classes, ids or directly on the HTML element.

This example shows how text in the color `rgb(202, 172, 146)` looks like.

```
.text, #text, p{  
    color:rgb(202, 172, 146)  
}
```

If you want to add a text shadow in that color use the text-shadow property, you can generate a text shadow directly with our [CSS Text Shadow Generator](#).

Here you see how black text with a 4 pixel rgb(202, 172, 146) colored shadow looks like.

```
.shadow{ text-shadow: 4px 4px 2px rgb(202, 172, 146) }
```

Border

The CSS property to change the border of an element to YUV 178.0060, -15.7790, 21.0427 is called "border".

The border property can be set on classes, ids or directly on the HTML element.

This example shows the color as border, it can be applied via the CSS property "border" or "border-color".

```
.border, #border, table{ border:4px solid rgb(202, 172, 146) }
```


If only the border color should be changed use the property `border-color`.

```
.border{ border-color:rgb(202, 172, 146) }
```

If you want to add a box shadow in that color use:

Here you see how a box with a 4 pixel `rgb(202, 172, 146)` colored shadow looks like.

```
.boxshadow{ -moz-box-shadow:4px 4px 4px  
4px rgb(202, 172, 146); -webkit-box-  
shadow:4px 4px 4px 4px rgb(202, 172, 146);  
box-shadow:4px 4px 4px 4px rgb(202, 172,  
146) }
```

Background

The CSS property to change the background color of an element to YUV 178.0060, -15.7790, 21.0427 is called "background". The background property can be set on classes, ids or directly on the HTML element.

```
.background, #background, body{  
background: rgb(202, 172, 146) }
```

If only the background color should be changed can be used:

```
.background{ background-color: rgb(202,  
172, 146) }
```

This example shows the color as background, it is applied via the CSS property "background".

To optimize and compress your CSS code, you can use our [online CSS compressor and optimizer](#) based on csstidy. If you want to create a linear or radial gradient as background or border, check our [CSS Gradient Generator](#).

Hey! You found this booklet interesting? Support Converting Colors with the new Membership Option!

The pro membership hides all ads, plus gives you double the colors in the color bucket, and more awesome pro features!

[Learn more, Memberships starting at \\$2.50/m!](#)

**Follow me
on Twitter!**

@ConvertingColor