

Converting Colors

YUV(178.8020, -6.3114,
17.7136)

Have a look what the booklet for
YUV(178.8020, -6.3114, 17.7136)
contains.

YUV(178.8020, -6.3114, 17.7136)	3
<i>Conversions</i>	4
<i>Details</i>	6
<i>Harmonies</i>	12
<i>Previews</i>	24
<i>Color Blindness Simulation</i>	28
<i>CSS Examples</i>	31

Color

**YUV(178.8020, -6.3114,
17.7136)**

Conversions

Conversions Part 1

Format	Color
Hex	C7ABA6
RGB	199, 171, 166
RGB Percent	78%, 67%, 65%
CMY	0.2196, 0.3294, 0.3490
CMYK	0.00, 0.14, 0.17, 0.22
HSL	9°, 23%, 72%
HSV	9°, 17%, 78%
XYZ	44.9990, 44.0211, 42.2016
YIQ	178.8020, 18.2930, 4.3810

Conversions

Conversions Part 2

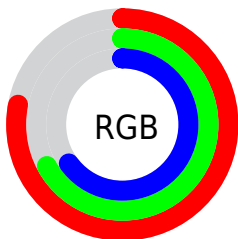
Format	Color
RYB	199, 172, 166
Decimal	13085606
CIELab	72.24, 9.34, 6.32
CIElCh	72, 11.277, 34.094
Yxy	44.0211, 0.3429, 0.3355
Android (android.graphics.Color)	4291275686 (0xFFC7ABA6)
YUV	178.8020, -6.3114, 17.7136
Hunter-Lab	66.3484, 4.9531, 8.7318

Details

The YUV color $178.8020, -6.3114, 17.7136$ is a light color, and the websafe version is hex $CC9999$. A complement of this color would be $186.1980, 6.3114, -17.7136$, and the grayscale version is $179.0000, 0.0000, 0.0000$.

A 20% lighter version of the original color is $234.1010, -6.4588, 18.3284$, and $126.2040, -6.0166, 16.4841$ is the 20% darker color. If you saturate the color by 10%, you get $166.5430, -10.1277, 28.4648$, and if you desaturate by 10%, it is $191.0610, -2.4951, 6.9625$.

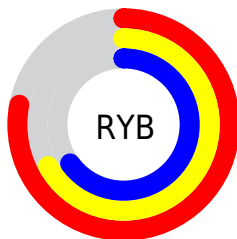
Distribution



Red (78%)

Green (67%)

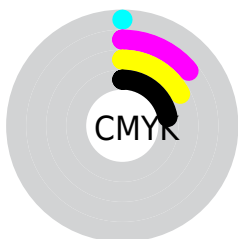
Blue (65%)



Red (78%)

Yellow (67%)

Blue (65%)

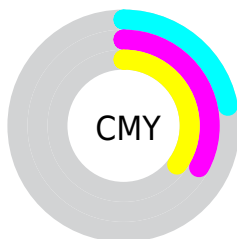


Cyan (0%)

Magenta (14%)

Yellow (17%)

Black (22%)



Cyan (22%)

Magenta (33%)

Yellow (35%)

Brightness & Saturation Gradients

These gradients show how the YUV color 178.8020, -6.3114, 17.7136 changes by changing the brightness by 10 percent. The first figure shows a shift by +10% for each color and the second figure -10%.

Similar to the brightness gradients but the following saturation gradients show a change of the YUV color 178.8020, -6.3114, 17.7136 by changing the saturation by 10% instead.

■ 178.8020, -6.3114,
17.7136

■ 178.8020, -6.3114,
17.7136

255.0000, 0.0000,
0.0000

■ 151.9160, -5.8746,
17.6137

■ 234.1010, -6.4588,
18.3284

■ 126.2040, -6.0166,
16.4841

■ 254.4300, -2.1840,
0.4999

■ 101.0190, -5.4324,
15.7693

■ 76.7200, -5.2850,
15.1546

■ 54.1220, -4.9901,
13.9250

■ 32.6380, -4.2585,
12.5955

■ 8.6600, -4.2694,

16.0842

■ 0.0000, 0.0000,
0.0000

■ 178.8020, -6.3114,
17.7136

■ 178.8020, -6.3114,
17.7136

■ 166.5430,
-10.1277, 28.4648

■ 191.0610, -2.4951,
6.9625

■ 154.2840,
-13.9440, 39.2159

■ 203.3200, 1.3212,
-3.7886

■ 142.0250,
-17.7603, 49.9671

■ 215.5790, 5.1376,
-14.5398

■ 129.7660,
-21.5766, 60.7182

■ 227.8380, 8.9539,
-25.2909

■ 118.2080,
-25.2455, 70.8546

■ 238.2560, 8.2548,
-34.4275

■ 105.9490,
-29.0619, 81.6057

■ 93.6900, -32.8782,
92.3569

■ 81.4310, -36.6945,
103.1080

■ 77.1110, -38.0157,
106.8967

Harmonies

Analogous

The Analogous color harmony consists of three colors that are next to each other on the color wheel.



179.0560, -1.5066, 16.6139



178.8020, -6.3114, 17.7136



177.6830, -9.2107, 14.3100

Triad

The Triadic color harmony groups three colors that are evenly spaced from another and form a triangle on the color wheel.



178.8020, -6.3114, 17.7136



174.1250, -3.0196, -11.5106



176.5890, 10.0626, -7.5326

Complementary

The Complementary color scheme is a pair of colors which are on the opposite of each other on the color wheel.



178.8020, -6.3114, 17.7136



186.1980, 6.3114, -17.7136

Split Complementary

Split-complementary colors differ from the complementary color scheme. The scheme consists of three colors, the original color and two neighbors of the complement color.



175.4200, 9.6529, -16.1543



178.8020, -6.3114, 17.7136



173.4600, 2.2382, -17.9434

Square

The Square scheme is like the rectangle color scheme, but the four colors are evenly spaced on the color wheel.



178.8020, -6.3114, 17.7136



175.3280, -7.5567, -2.9187



174.3010, 6.7536, -19.5580



178.3730, 7.7041, 2.3039

Rectangle

The Rectangle color scheme consists of four colors that form a rectangle on the color wheel.



178.8020, -6.3114, 17.7136



177.4220, -10.0680, 9.2769



174.3010, 6.7536, -19.5580



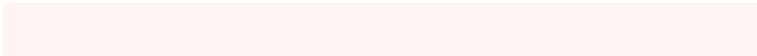
176.5670, 10.0735, -11.0213

Sweetspot

The Sweet Spot groups the original color and five complimentary colors.



178.8020, -6.3114, 17.7136



247.0610, -2.4951, 6.9625



179.0590, 7.3659, 17.4883



122.9790, -1.4686, 4.4034



0.0000, 0.0000, 0.0000



128.0000, 0.0000, 0.0000

Same Dimension

The Same Dimension uses a secret algorithm to generate beautiful new colors.



178.8020, -6.3114, 17.7136



223.9450, -9.8329, 27.2352



188.1940, -10.9416, 9.4769



93.2780, -1.6161, 5.0182



63.4120, -31.2621, 87.3387



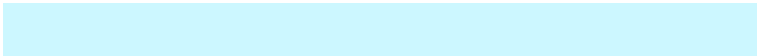
13.6990, -6.7536, 19.5580

Inverse Universe

The Inverse Universe completely reimagines the original color for something new.



186.1980, 6.3114, -17.7136



235.0550, 9.8329, -27.2352



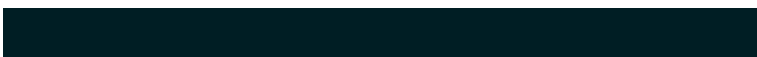
176.8060, 10.9416, -9.4769



95.7220, 1.6161, -5.0182



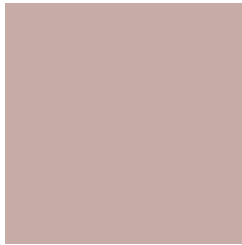
99.5880, 31.2621, -87.3387



21.7140, 7.0430, -19.0432

Previews

White Background



This preview shows how the YUV color 178.8020, -6.3114, 17.7136 looks on a white background.

Color Contrast Check

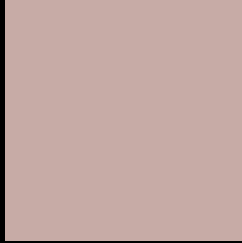
Large Text (above 18pt) WCAG AA × Fail

Any Text WCAG AA × Fail

Large Text (above 18pt) WCAG AAA × Fail

Any Text WCAG AAA × Fail

Black Background



This preview shows how the YUV color 178.8020, -6.3114, 17.7136 looks on a black background.

Color Contrast Check

Large Text (above 18pt) WCAG AA ✓ Pass

Any Text WCAG AA ✓ Pass

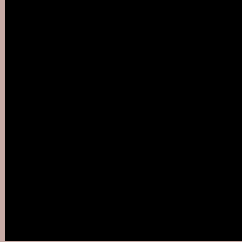
Large Text (above 18pt) WCAG AAA ✓ Pass

Any Text WCAG AAA ✓ Pass

If you want to check with other color combinations, try the [Color Contrast Checker](#).

YUV 178.8020, -6.3114, 17.7136

Background



This preview shows how black text looks on a background with the YUV color 178.8020, -6.3114, 17.7136.



This preview shows how white text looks on a background with the YUV color 178.8020, -6.3114,

Color Blindness Simulation

Color vision deficiency is a very complex topic, and I could not describe the different causes any better than Wikipedia does, so if you want to learn more, you should check out their [article about color blindness](#).

Dichromacy



Original Color

178.8020, -6.3114, 17.7136

Protanopia

177.5830, -4.2314, 3.8737

Deuteranopia

178.8020, -6.3114, 17.7136



Tritanopia

180.0500, 0.9614, 18.3732

Trichromacy



Original Color

178.8020, -6.3114, 17.7136

Protanomaly

178.0890, -4.9739, 8.6919

Deuteranomaly

178.8020, -6.3114, 17.7136

Tritanomaly

179.6540, -1.8014, 17.8434

Monochromacy



Original Color

178.8020, -6.3114, 17.7136

Achromatopsia

179.0000, 0.0000, 0.0000

Achromatomaly

178.7620, -2.3477, 6.3477

CSS Examples

Text

The CSS property to change the color of the text to YUV 178.8020, -6.3114, 17.7136 is called "color". The color property can be set on classes, ids or directly on the HTML element.

This example shows how text in the color `rgb(199, 171, 166)` looks like.

```
.text, #text, p{  
    color:rgb(199, 171, 166)  
}
```

If you want to add a text shadow in that color use the text-shadow property, you can generate a text shadow directly with our [CSS Text Shadow Generator](#).

Here you see how black text with a 4 pixel rgb(199, 171, 166) colored shadow looks like.

```
.shadow{ text-shadow: 4px 4px 2px rgb(199, 171, 166) }
```

Border

The CSS property to change the border of an element to YUV 178.8020, -6.3114, 17.7136 is called "border". The border property can be set on classes, ids or directly on the HTML element.

This example shows the color as border, it can be applied via the CSS property "border" or "border-color".

```
.border, #border, table{ border:4px solid rgb(199, 171, 166) }
```


If only the border color should be changed use the property `border-color`.

```
.border{ border-color:rgb(199, 171, 166) }
```

If you want to add a box shadow in that color use:

Here you see how a box with a 4 pixel `rgb(199, 171, 166)` colored shadow looks like.

```
.boxshadow{ -moz-box-shadow:4px 4px 4px  
4px rgb(199, 171, 166); -webkit-box-  
shadow:4px 4px 4px 4px rgb(199, 171, 166);  
box-shadow:4px 4px 4px 4px rgb(199, 171,  
166) }
```

Background

The CSS property to change the background color of an element to YUV 178.8020, -6.3114, 17.7136 is called "background". The background property can be set on classes, ids or directly on the HTML element.

```
.background, #background, body{  
background: rgb(199, 171, 166) }
```

If only the background color should be changed can be used:

```
.background{ background-color: rgb(199,  
171, 166) }
```

This example shows the color as background, it is applied via the CSS property "background".

To optimize and compress your CSS code, you can use our [online CSS compressor and optimizer](#) based on csstidy. If you want to create a linear or radial gradient as background or border, check our [CSS Gradient Generator](#).

Hey! You found this booklet interesting? Support Converting Colors with the new Membership Option!

The pro membership hides all ads, plus gives you double the colors in the color bucket, and more awesome pro features!

[Learn more, Memberships starting at \\$2.50/m!](#)

**Follow me
on Twitter!**

@ConvertingColor