

Converting Colors

YUV(178.8780, -4.8699,
22.0320)

Have a look what the booklet for
YUV(178.8780, -4.8699, 22.0320)
contains.

YUV(178.8780, -4.8699, 22.0320)	3
<i>Conversions</i>	4
<i>Details</i>	6
<i>Harmonies</i>	12
<i>Previews</i>	24
<i>Color Blindness Simulation</i>	28
<i>CSS Examples</i>	31

Color

**YUV(178.8780, -4.8699,
22.0320)**

Conversions

Conversions Part 1

Format	Color
Hex	CCA8A9
RGB	204, 168, 169
RGB Percent	80%, 66%, 66%
CMY	0.2000, 0.3412, 0.3373
CMYK	0.00, 0.18, 0.17, 0.20
HSL	358°, 26%, 73%
HSV	358°, 18%, 80%
XYZ	46.0659, 43.7072, 43.5445
YIQ	178.8780, 21.1350, 7.9430

Conversions

Conversions Part 2

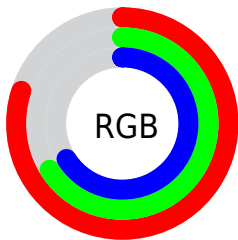
Format	Color
R_{YB}	204, 168, 169
Decimal	13412521
CIE _{Lab}	72.03, 13.30, 4.43
CIE _{LCh}	72, 14.019, 18.415
Yxy	43.7072, 0.3455, 0.3278
Android (android.graphics.Color)	4291602601 (0xFFCCA8A9)
YUV	178.8780, -4.8699, 22.0320
Hunter-Lab	66.1114, 8.6824, 7.2264

Details

The YUV color $178.8780, -4.8699, 22.0320$ is a light color, and the websafe version is hex $CC9999$. A complement of this color would be $193.1220, 4.8699, -22.0320$, and the grayscale version is $179.0000, 0.0000, 0.0000$.

A 20% lighter version of the original color is $232.6820, -4.2802, 19.5729$, and $125.9810, -4.4276, 20.1877$ is the 20% darker color. If you saturate the color by 10%, you get $164.8580, -7.8180, 34.3275$, and if you desaturate by 10%, it is $192.8980, -1.9217, 9.7365$.

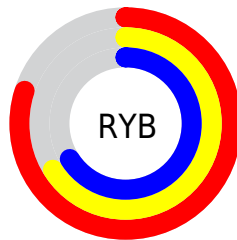
Distribution



Red (80%)

Green (66%)

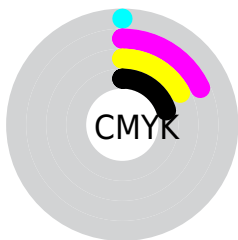
Blue (66%)



Red (80%)

Yellow (66%)

Blue (66%)

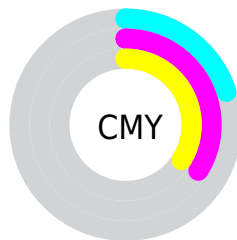


Cyan (0%)

Magenta (18%)

Yellow (17%)

Black (20%)



Cyan (20%)


Magenta (34%)


Yellow (34%)

Brightness & Saturation Gradients

These gradients show how the YUV color 178.8780, -4.8699, 22.0320 changes by changing the brightness by 10 percent. The first figure shows a shift by +10% for each color and the second figure -10%.


Similar to the brightness gradients but the following saturation gradients show a change of the YUV color 178.8780, -4.8699, 22.0320 by changing the saturation by 10% instead.


 178.8780, -4.8699,
22.0320


 178.8780, -4.8699,
22.0320

255.0000, 0.0000,
0.0000


 152.2800, -4.5750,
20.8024


 232.6820, -4.2802,
19.5729


 125.9810, -4.4276,
20.1877

 253.0110, -0.0054,
1.7444

 100.6820, -4.2802,
19.5729

 77.0840, -3.9854,
18.3433

 53.6000, -3.2538,
17.0138

 32.0020, -2.9590,
15.7842

 9.2690, -4.5696,

19.0581

■ 0.0000, 0.0000,
0.0000

■ 178.8780, -4.8699,
22.0320

■ 178.8780, -4.8699,
22.0320

■ 164.8580, -7.8180,
34.3275

■ 192.8980, -1.9217,
9.7365

■ 150.2510,
-10.4767, 47.1379

■ 207.5050, 0.7370,
-3.0739

■ 136.2310,
-13.4249, 59.4334

■ 221.5250, 3.6852,
-15.3694

■ 121.7380,
-15.6468, 72.1438

■ 236.0180, 5.9071,
-28.0798

■ 107.7180,
-18.5950, 84.4393

■ 239.7510, 7.5178,
-31.3536

■ 93.6980, -21.5431,
96.7349

■ 79.0910, -24.2019,
109.5452

■ 65.0710, -27.1500,
121.8407

■ 61.6800, -27.4502,
124.8146

Harmonies

Analogous

The Analogous color harmony consists of three colors that are next to each other on the color wheel.



179.1640, 1.3981, 18.2732



178.8780, -4.8699, 22.0320



177.9010, -9.8112, 20.2578

Triad

The Triadic color harmony groups three colors that are evenly spaced from another and form a triangle on the color wheel.



178.8780, -4.8699, 22.0320



173.9960, -7.3930, -8.7665



174.9300, 12.8525, -15.7246

Complementary

The Complementary color scheme is a pair of colors which are on the opposite of each other on the color wheel.



178.8780, -4.8699, 22.0320



193.1220, 4.8699, -22.0320

Split Complementary

Split-complementary colors differ from the complementary color scheme. The scheme consists of three colors, the original color and two neighbors of the complement color.



172.7180, 10.9850, -23.4317



178.8780, -4.8699, 22.0320



172.6510, -0.8139, -18.9879

Square

The Square scheme is like the rectangle color scheme, but the four colors are evenly spaced on the color wheel.



178.8780, -4.8699, 22.0320



175.0360, -11.3567, 2.5994



172.0400, 5.8963, -24.5911



177.3660, 11.6516, -3.8290

Rectangle

The Rectangle color scheme consists of four colors that form a rectangle on the color wheel.



178.8780, -4.8699, 22.0320



177.2980, -11.9789, 15.5247



172.0400, 5.8963, -24.5911



174.2070, 12.7159, -18.5985

Sweetspot

The Sweet Spot groups the original color and five complimentary colors.



178.8780, -4.8699, 22.0320



246.0010, -1.4795, 7.8921



182.5690, 10.5655, 17.9180



122.3920, -1.1793, 4.9182



0.0000, 0.0000, 0.0000



128.0000, 0.0000, 0.0000

Same Dimension

The Same Dimension uses a secret algorithm to generate beautiful new colors.



178.8780, -4.8699, 22.0320



217.3740, -7.0864, 32.9980



188.7430, -10.2263, 13.3804



94.9900, -1.4741, 6.1478



50.2040, -22.2856, 101.5531



11.4760, -5.1647, 23.2615

Inverse Universe

The Inverse Universe completely reimagines the original color for something new.



178.8780, -4.8699, 22.0320



217.3740, -7.0864, 32.9980



183.2570, 10.2263, -13.3804



94.9900, -1.4741, 6.1478



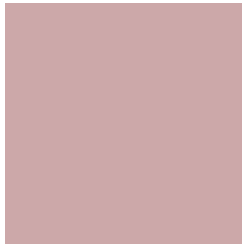
50.2040, -22.2856, 101.5531



11.4760, -5.1647, 23.2615

Previews

White Background



This preview shows how the YUV color 178.8780, -4.8699, 22.0320 looks on a white background.

Color Contrast Check

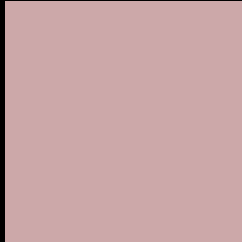
Large Text (above 18pt) WCAG AA × Fail

Any Text WCAG AA × Fail

Large Text (above 18pt) WCAG AAA × Fail

Any Text WCAG AAA × Fail

Black Background



This preview shows how the YUV color 178.8780, -4.8699, 22.0320 looks on a black background.

Color Contrast Check

Large Text (above 18pt) WCAG AA ✓ Pass

Any Text WCAG AA ✓ Pass

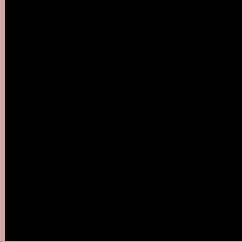
Large Text (above 18pt) WCAG AAA ✓ Pass

Any Text WCAG AAA ✓ Pass

If you want to check with other color combinations, try the [Color Contrast Checker](#).

YUV 178.8780, -4.8699, 22.0320

Background



This preview shows how black text looks on a background with the YUV color 178.8780, -4.8699, 22.0320.



This preview shows how white text looks on a background with the YUV color 178.8780, -4.8699,

Color Blindness Simulation

Color vision deficiency is a very complex topic, and I could not describe the different causes any better than Wikipedia does, so if you want to learn more, you should check out their [article about color blindness](#).

Dichromacy



Original Color

178.8780, -4.8699, 22.0320

Protanopia

177.1530, -2.0474, 3.3738

Deuteranopia

178.4320, -5.1430, 16.2841



Tritanopia

179.1430, -0.0705, 22.6766

Trichromacy



Original Color

178.8780, -4.8699, 22.0320

Protanomaly

177.6700, -2.7953, 9.9364

Deuteranomaly

178.7420, -5.2958, 18.6433

Tritanomaly

179.2740, -2.1071, 22.5617

Monochromacy



Original Color

178.8780, -4.8699, 22.0320

Achromatopsia

179.0000, 0.0000, 0.0000

Achromatomaly

178.8870, -1.9163, 7.9921

CSS Examples

Text

The CSS property to change the color of the text to YUV 178.8780, -4.8699, 22.0320 is called "color". The color property can be set on classes, ids or directly on the HTML element.

This example shows how text in the color `rgb(204, 168, 169)` looks like.

```
.text, #text, p{  
    color:rgb(204, 168, 169)  
}
```

If you want to add a text shadow in that color use the text-shadow property, you can generate a text shadow directly with our [CSS Text Shadow Generator](#).

Here you see how black text with a 4 pixel rgb(204, 168, 169) colored shadow looks like.

```
.shadow{ text-shadow: 4px 4px 2px rgb(204, 168, 169) }
```

Border

The CSS property to change the border of an element to YUV 178.8780, -4.8699, 22.0320 is called "border". The border property can be set on classes, ids or directly on the HTML element.

This example shows the color as border, it can be applied via the CSS property "border" or "border-color".

```
.border, #border, table{ border:4px solid rgb(204, 168, 169) }
```


If only the border color should be changed use the property border-color.

```
.border{ border-color:rgb(204, 168, 169) }
```

If you want to add a box shadow in that color use:

Here you see how a box with a 4 pixel rgb(204, 168, 169) colored shadow looks like.

```
.boxshadow{ -moz-box-shadow:4px 4px 4px  
4px rgb(204, 168, 169); -webkit-box-  
shadow:4px 4px 4px 4px rgb(204, 168, 169);  
box-shadow:4px 4px 4px 4px rgb(204, 168,  
169) }
```

Background

The CSS property to change the background color of an element to YUV 178.8780, -4.8699, 22.0320 is called "background". The background property can be set on classes, ids or directly on the HTML element.

```
.background, #background, body{  
background: rgb(204, 168, 169) }
```

If only the background color should be changed can be used:

```
.background{ background-color: rgb(204,  
168, 169) }
```

This example shows the color as background, it is applied via the CSS property "background".

To optimize and compress your CSS code, you can use our [online CSS compressor and optimizer](#) based on csstidy. If you want to create a linear or radial gradient as background or border, check our [CSS Gradient Generator](#).

Hey! You found this booklet interesting? Support Converting Colors with the new Membership Option!

The pro membership hides all ads, plus gives you double the colors in the color bucket, and more awesome pro features!

[Learn more, Memberships starting at \\$2.50/m!](#)

**Follow me
on Twitter!**

@ConvertingColor