

Converting Colors

YUV(179.1410, -13.8735,
16.5393)

Have a look what the booklet for
YUV(179.1410, -13.8735, 16.5393)
contains.

YUV(179.1410, -13.8735, 16.5393)	3
<i>Conversions</i>	4
<i>Details</i>	6
<i>Harmonies</i>	12
<i>Previews</i>	24
<i>Color Blindness Simulation</i>	28
<i>CSS Examples</i>	31

Color

**YUV(179.1410, -13.8735,
16.5393)**

Conversions

Conversions Part 1

Format	Color
Hex	C6AF97
RGB	198, 175, 151
RGB Percent	78%, 69%, 59%
CMY	0.2235, 0.3137, 0.4078
CMYK	0.00, 0.12, 0.24, 0.22
HSL	31°, 29%, 68%
HSV	31°, 24%, 78%
XYZ	44.2046, 44.9001, 35.6149
YIQ	179.1410, 21.4120, -2.5880

Conversions

Conversions Part 2

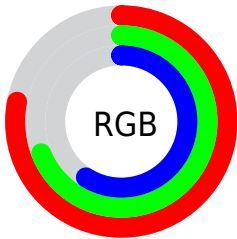
Format	Color
RYB	196, 198, 151
Decimal	13021079
CIELab	72.83, 4.52, 15.35
CIELCh	73, 15.998, 73.599
Yxy	44.9001, 0.3544, 0.3600
Android (android.graphics.Color)	4291211159 (0xFFC6AF97)
YUV	179.1410, -13.8735, 16.5393
Hunter-Lab	67.0075, 0.4926, 15.3923

Details

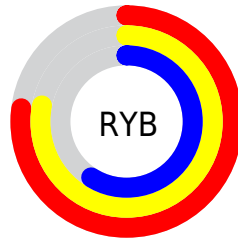
The YUV color $179.1410, -13.8735, 16.5393$ is a light color, and the websafe version is hex $CC9999$. A complement of this color would be $169.8590, 13.8735, -16.5393$, and the grayscale version is $179.0000, 0.0000, 0.0000$.

A 20% lighter version of the original color is $234.6250, -14.6051, 17.8689$, and $126.6570, -13.1419, 15.2098$ is the 20% darker color. If you saturate the color by 10%, you get $170.9910, -19.7156, 23.6869$, and if you desaturate by 10%, it is $187.2910, -8.0315, 9.3918$.

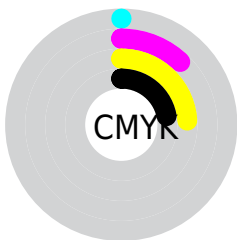
Distribution



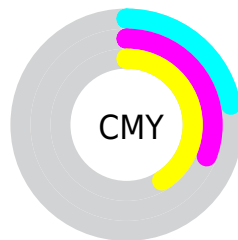
- Red (78%)
- Green (69%)
- Blue (59%)



- Red (77%)
- Yellow (78%)
- Blue (59%)



- Cyan (0%)
- Magenta (12%)
- Yellow (24%)
- Black (22%)



- Cyan (22%)
- Magenta (31%)
- Yellow (41%)

Brightness & Saturation Gradients

These gradients show how the YUV color 179.1410, -13.8735, 16.5393 changes by changing the brightness by 10 percent. The first figure shows a shift by +10% for each color and the second figure -10%.

Similar to the brightness gradients but the following saturation gradients show a change of the YUV color 179.1410, -13.8735, 16.5393 by changing the saturation by 10% instead.

■ 179.1410,
-13.8735, 16.5393

■ 179.1410,
-13.8735, 16.5393

255.0000, 0.0000,
0.0000

■ 151.9560,
-13.2893, 15.8246

■ 234.6250,
-14.6051, 17.8689

■ 126.6570,
-13.1419, 15.2098

■ 252.4920, -9.6096,
2.1995

■ 101.4720,
-12.5577, 14.4951

■ 76.9880, -11.8261,
13.1655

■ 53.9170, -10.8051,
12.3508

■ 32.0910, -11.3839,
11.3212

■ 10.3990, -5.1267,

11.0511

■ 0.0000, 0.0000,
0.0000

■ 179.1410,
-13.8735, 16.5393

■ 179.1410,
-13.8735, 16.5393

■ 170.9910,
-19.7156, 23.6869

■ 187.2910, -8.0315,
9.3918

■ 163.4280,
-25.8470, 30.3196

■ 194.8540, -1.9000,
2.7590

■ 155.3920,
-31.2523, 37.3672

■ 202.8900, 3.5052,
-4.2885

■ 147.2420,
-37.0943, 44.5148

■ 211.0400, 9.3473,
-11.4361

■ 139.6790,
-43.2257, 51.1475

■ 218.6030, 15.4787,
-18.0688

■ 131.5290,
-49.0678, 58.2951

■ 225.0430, 14.7688,
-23.7167

■ 123.3790,
-54.9098, 65.4426

■ 230.9130, 11.8749,
-28.8647

■ 118.4890,
-58.4151, 69.7311

■ 236.7830, 8.9810,
-34.0127

■ 237.9570, 8.4022,
-35.0423

Harmonies

Analogous

The Analogous color harmony consists of three colors that are next to each other on the color wheel.



180.6950, -10.6956, 23.9465



179.1410, -13.8735, 16.5393



177.4770, -13.5462, 4.8437

Triad

The Triadic color harmony groups three colors that are evenly spaced from another and form a triangle on the color wheel.



179.1410, -13.8735, 16.5393



173.3170, 5.7597, -27.4650



181.1610, 9.2876, 7.7518

Complementary

The Complementary color scheme is a pair of colors which are on the opposite of each other on the color wheel.



179.1410, -13.8735, 16.5393



169.8590, 13.8735, -16.5393

Split Complementary

Split-complementary colors differ from the complementary color scheme. The scheme consists of three colors, the original color and two neighbors of the complement color.



179.2130, 13.6990, -7.2028



179.1410, -13.8735, 16.5393



174.2120, 11.7275, -28.2499

Square

The Square scheme is like the rectangle color scheme, but the four colors are evenly spaced on the color wheel.



179.1410, -13.8735, 16.5393



174.2980, -2.1189, -20.4323



176.0650, 14.7580, -20.2280



181.2180, 2.8505, 19.1028

Rectangle

The Rectangle color scheme consists of four colors that form a rectangle on the color wheel.



179.1410, -13.8735, 16.5393



176.4050, -11.0457, -3.8632



176.0650, 14.7580, -20.2280



180.2960, 11.1931, 3.2484

Sweetspot

The Sweet Spot groups the original color and five complimentary colors.



179.1410, -13.8735, 16.5393



247.6650, -5.2578, 6.4328



167.7890, 3.5550, 26.4950



123.8110, -3.3578, 3.6738



0.0000, 0.0000, 0.0000



128.0000, 0.0000, 0.0000

Same Dimension

The Same Dimension uses a secret algorithm to generate beautiful new colors.



179.1410, -13.8735, 16.5393



226.3610, -20.8840, 25.1164



192.6420, -20.5295, 4.6990



95.6260, -2.7736, 2.9590



97.4580, -48.0468, 57.4803



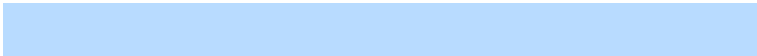
21.3300, -10.5157, 12.8656

Inverse Universe

The Inverse Universe completely reimagines the original color for something new.



169.8590, 13.8735, -16.5393



212.6390, 20.8840, -25.1164



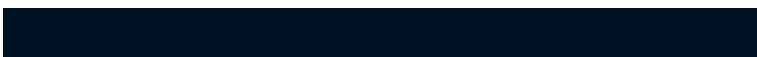
156.3580, 20.5295, -4.6990



93.3740, 2.7736, -2.9590



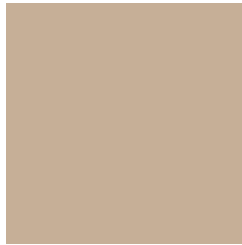
65.5420, 48.0468, -57.4803



14.0830, 10.8051, -12.3508

Previews

White Background



This preview shows how the YUV color 179.1410, -13.8735, 16.5393 looks on a white background.

Color Contrast Check

Large Text (above 18pt) WCAG AA × Fail

Any Text WCAG AA × Fail

Large Text (above 18pt) WCAG AAA × Fail

Any Text WCAG AAA × Fail

Black Background



This preview shows how the YUV color 179.1410, -13.8735, 16.5393 looks on a black background.

Color Contrast Check

Large Text (above 18pt) WCAG AA ✓ Pass

Any Text WCAG AA ✓ Pass

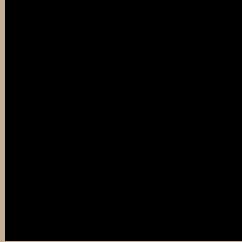
Large Text (above 18pt) WCAG AAA ✓ Pass

Any Text WCAG AAA ✓ Pass

If you want to check with other color combinations, try the [Color Contrast Checker](#).

YUV 179.1410, -13.8735, 16.5393

Background



This preview shows how black text looks on a background with the YUV color 179.1410, -13.8735, 16.5393.



This preview shows how white text looks on a background with the YUV color 179.1410, -13.8735,

Color Blindness Simulation

Color vision deficiency is a very complex topic, and I could not describe the different causes any better than Wikipedia does, so if you want to learn more, you should check out their [article about color blindness](#).

Dichromacy



Original Color

179.1410, -13.8735, 16.5393

Protanopia

178.1400, -12.3940, 8.6472

Deuteranopia

179.8860, -13.7478, 22.9020



Tritanopia

181.1640, 1.3981, 18.2732

Trichromacy



Original Color

179.1410, -13.8735, 16.5393

Protanomaly

178.6350, -13.1311, 11.7211

Deuteranomaly

179.5760, -13.5950, 20.5428

Tritanomaly

180.6710, -4.2748, 17.8285

Monochromacy



Original Color

179.1410, -13.8735, 16.5393

Achromatopsia

179.0000, 0.0000, 0.0000

Achromatomaly

179.3660, -5.1104, 5.8180

CSS Examples

Text

The CSS property to change the color of the text to YUV 179.1410, -13.8735, 16.5393 is called "color". The color property can be set on classes, ids or directly on the HTML element.

This example shows how text in the color `rgb(198, 175, 151)` looks like.

```
.text, #text, p{  
    color:rgb(198, 175, 151)  
}
```

If you want to add a text shadow in that color use the text-shadow property, you can generate a text shadow directly with our [CSS Text Shadow Generator](#).

Here you see how black text with a 4 pixel rgb(198, 175, 151) colored shadow looks like.

```
.shadow{ text-shadow: 4px 4px 2px rgb(198, 175, 151) }
```

Border

The CSS property to change the border of an element to YUV 179.1410, -13.8735, 16.5393 is called "border".

The border property can be set on classes, ids or directly on the HTML element.

This example shows the color as border, it can be applied via the CSS property "border" or "border-color".

```
.border, #border, table{ border:4px solid rgb(198, 175, 151) }
```


If only the border color should be changed use the property `border-color`.

```
.border{ border-color:rgb(198, 175, 151) }
```

If you want to add a box shadow in that color use:

Here you see how a box with a 4 pixel `rgb(198, 175, 151)` colored shadow looks like.

```
.boxshadow{ -moz-box-shadow:4px 4px 4px  
4px rgb(198, 175, 151); -webkit-box-  
shadow:4px 4px 4px 4px rgb(198, 175, 151);  
box-shadow:4px 4px 4px 4px rgb(198, 175,  
151) }
```

Background

The CSS property to change the background color of an element to YUV 179.1410, -13.8735, 16.5393 is called "background". The background property can be set on classes, ids or directly on the HTML element.

```
.background, #background, body{  
background: rgb(198, 175, 151) }
```

If only the background color should be changed can be used:

```
.background{ background-color: rgb(198,  
175, 151) }
```

This example shows the color as background, it is applied via the CSS property "background".

To optimize and compress your CSS code, you can use our [online CSS compressor and optimizer](#) based on csstidy. If you want to create a linear or radial gradient as background or border, check our [CSS Gradient Generator](#).

Hey! You found this booklet interesting? Support Converting Colors with the new Membership Option!

The pro membership hides all ads, plus gives you double the colors in the color bucket, and more awesome pro features!

[Learn more, Memberships starting at \\$2.50/m!](#)

**Follow me
on Twitter!**

@ConvertingColor