

Converting Colors

YUV(179.4270, -4.1545,
25.9355)

Have a look what the booklet for
YUV(179.4270, -4.1545, 25.9355)
contains.

YUV(179.4270, -4.1545, 25.9355)	3
<i>Conversions</i>	4
<i>Details</i>	6
<i>Harmonies</i>	12
<i>Previews</i>	24
<i>Color Blindness Simulation</i>	28
<i>CSS Examples</i>	31

Color

**YUV(179.4270, -4.1545,
25.9355)**

Conversions

Conversions Part 1

Format	Color
Hex	D1A6AB
RGB	209, 166, 171
RGB Percent	82%, 65%, 67%
CMY	0.1804, 0.3490, 0.3294
CMYK	0.00, 0.21, 0.18, 0.18
HSL	353°, 32%, 74%
HSV	353°, 21%, 82%
XYZ	47.2814, 43.7680, 44.4842
YIQ	179.4270, 24.0230, 10.6710

Conversions

Conversions Part 2

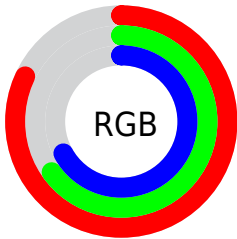
Format	Color
R _Y B	209, 166, 171
Decimal	13739691
CIE Lab	72.07, 16.55, 3.45
CIE LCh	72, 16.905, 11.764
Yxy	43.7680, 0.3489, 0.3229
Android (android.graphics.Color)	4291929771 (0xFFD1A6AB)
YUV	179.4270, -4.1545, 25.9355
Hunter-Lab	66.1574, 11.7950, 6.4437

Details

The YUV color $179.4270, -4.1545, 25.9355$ is a light color, and the websafe version is hex $CC9999$. A complement of this color would be $195.5730, 4.1545, -25.9355$, and the grayscale version is $179.0000, 0.0000, 0.0000$.

A 20% lighter version of the original color is $231.7360, -2.8278, 20.4025$, and $126.5300, -3.7123, 24.0912$ is the 20% darker color. If you saturate the color by 10%, you get $165.0480, -5.9397, 38.5459$, and if you desaturate by 10%, it is $193.8060, -2.3694, 13.3251$.

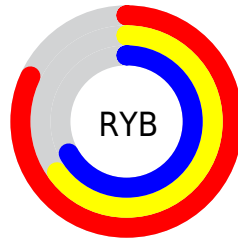
Distribution



Red (82%)

Green (65%)

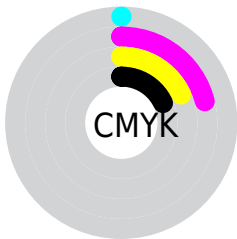
Blue (67%)



Red (82%)

Yellow (65%)

Blue (67%)

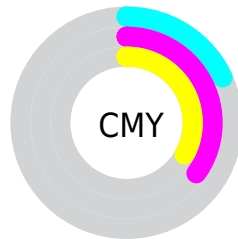


Cyan (0%)

Magenta (21%)

Yellow (18%)

Black (18%)



Cyan (18%)


Magenta (35%)

Yellow (33%)

Brightness & Saturation Gradients

These gradients show how the YUV color 179.4270, -4.1545, 25.9355 changes by changing the brightness by 10 percent. The first figure shows a shift by +10% for each color and the second figure -10%.

Similar to the brightness gradients but the following saturation gradients show a change of the YUV color 179.4270, -4.1545, 25.9355 by changing the saturation by 10% instead.

 179.4270, -4.1545,
25.9355


 179.4270, -4.1545,
25.9355


255.0000, 0.0000,
0.0000


 152.8290, -3.8597,
24.7060


 231.7360, -2.8278,
20.4025


 126.5300, -3.7123,
24.0912

 252.0650, 1.4470,
2.5740

 101.2310, -3.5649,
23.4764

 77.3340, -3.1227,
21.6321

 53.7360, -2.8278,
20.4025

 31.8390, -2.3856,
18.5582

 10.4650, -5.1592,

21.5172

■ 0.0000, 0.0000,
0.0000

■ 179.4270, -4.1545,
25.9355

■ 179.4270, -4.1545,
25.9355

■ 165.0480, -5.9397,
38.5459

■ 193.8060, -2.3694,
13.3251

■ 150.5550, -8.1616,
51.2563

■ 208.2990, -0.1474,
0.6148

■ 136.1760, -9.9468,
63.8666

■ 222.6780, 1.6377,
-11.9956

■ 121.6830,
-12.1687, 76.5770

■ 237.1710, 3.8597,
-24.7060

■ 107.8910,
-14.2433, 88.6726

■ 241.2460, 6.7807,
-28.2797

■ 93.3980, -16.4652,
101.3830

■ 79.0190, -18.2504,
113.9933

■ 65.2270, -20.3249,
126.0889

Harmonies

Analogous

The Analogous color harmony consists of three colors that are next to each other on the color wheel.



179.7450, 3.5767, 19.5176



179.4270, -4.1545, 25.9355



178.4070, -10.5537, 25.0761

Triad

The Triadic color harmony groups three colors that are evenly spaced from another and form a triangle on the color wheel.



179.4270, -4.1545, 25.9355



173.6110, -10.1612, -7.5518



174.2820, 15.6370, -22.1723

Complementary

The Complementary color scheme is a pair of colors which are on the opposite of each other on the color wheel.



179.4270, -4.1545, 25.9355



195.5730, 4.1545, -25.9355

Split Complementary

Split-complementary colors differ from the complementary color scheme. The scheme consists of three colors, the original color and two neighbors of the complement color.



171.4290, 12.6065, -30.1942



179.4270, -4.1545, 25.9355



171.8850, -2.4083, -20.9471

Square

The Square scheme is like the rectangle color scheme, but the four colors are evenly spaced on the color wheel.



179.4270, -4.1545, 25.9355



175.8470, -14.7146, 6.2732



171.1920, 5.3283, -29.1094



176.8430, 14.8674, -8.6323

Rectangle

The Rectangle color scheme consists of four colors that form a rectangle on the color wheel.



179.4270, -4.1545, 25.9355



177.8750, -13.7424, 21.1576



171.1920, 5.3283, -29.1094



173.0320, 14.7742, -25.4611

Sweetspot

The Sweet Spot groups the original color and five complimentary colors.



179.4270, -4.1545, 25.9355



244.5990, -1.7743, 9.1217



182.2640, 13.1808, 19.0625



121.8050, -0.8899, 5.4330



0.0000, 0.0000, 0.0000



128.0000, 0.0000, 0.0000

Same Dimension

The Same Dimension uses a secret algorithm to generate beautiful new colors.



179.4270, -4.1545, 25.9355



211.0480, -5.9397, 38.5459



188.2490, -10.9688, 18.1986



97.4030, -1.1847, 6.6626



52.5120, -16.0284, 101.2830



12.8290, -3.8597, 24.7060

Inverse Universe

The Inverse Universe completely reimagines the original color for something new.



179.4270, -4.1545, 25.9355



211.0480, -5.9397, 38.5459



186.7510, 10.9688, -18.1986



97.4030, -1.1847, 6.6626



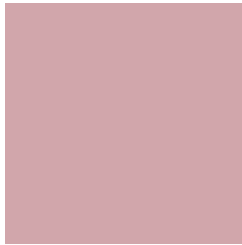
52.5120, -16.0284, 101.2830



12.8290, -3.8597, 24.7060

Previews

White Background



This preview shows how the YUV color 179.4270, -4.1545, 25.9355 looks on a white background.

Color Contrast Check

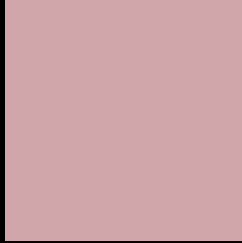
Large Text (above 18pt) WCAG AA × Fail

Any Text WCAG AA × Fail

Large Text (above 18pt) WCAG AAA × Fail

Any Text WCAG AAA × Fail

Black Background



This preview shows how the YUV color 179.4270, -4.1545, 25.9355 looks on a black background.

Color Contrast Check

Large Text (above 18pt) WCAG AA ✓ Pass

Any Text WCAG AA ✓ Pass

Large Text (above 18pt) WCAG AAA ✓ Pass

Any Text WCAG AAA ✓ Pass

If you want to check with other color combinations, try the [Color Contrast Checker](#).

YUV 179.4270, -4.1545, 25.9355

Background



This preview shows how black text looks on a background with the YUV color 179.4270, -4.1545, 25.9355.



This preview shows how white text looks on a background with the YUV color 179.4270, -4.1545,

25.9355.

Color Blindness Simulation

Color vision deficiency is a very complex topic, and I could not describe the different causes any better than Wikipedia does, so if you want to learn more, you should check out their [article about color blindness](#).

Dichromacy



Original Color

179.4270, -4.1545, 25.9355

Protanopia

177.3100, -0.1528, 2.3591

Deuteranopia

178.6600, -4.2694, 16.0842



Tritanopia

179.9370, -0.9549, 26.3653

Trichromacy



Original Color

179.4270, -4.1545, 25.9355

Protanomaly

178.0230, -1.4903, 11.3808

Deuteranomaly

178.6820, -4.2802, 19.5729

Tritanomaly

179.5950, -2.2653, 26.6652

Monochromacy



Original Color

179.4270, -4.1545, 25.9355

Achromatopsia

179.0000, 0.0000, 0.0000

Achromatomaly

179.0120, -1.4849, 9.6365

CSS Examples

Text

The CSS property to change the color of the text to YUV 179.4270, -4.1545, 25.9355 is called "color". The color property can be set on classes, ids or directly on the HTML element.

This example shows how text in the color `rgb(209, 166, 171)` looks like.

```
.text, #text, p{  
    color:rgb(209, 166, 171)  
}
```

If you want to add a text shadow in that color use the text-shadow property, you can generate a text shadow directly with our [CSS Text Shadow Generator](#).

Here you see how black text with a 4 pixel rgb(209, 166, 171) colored shadow looks like.

```
.shadow{ text-shadow: 4px 4px 2px rgb(209, 166, 171) }
```

Border

The CSS property to change the border of an element to YUV 179.4270, -4.1545, 25.9355 is called "border". The border property can be set on classes, ids or directly on the HTML element.

This example shows the color as border, it can be applied via the CSS property "border" or "border-color".

```
.border, #border, table{ border:4px solid rgb(209, 166, 171) }
```


If only the border color should be changed use the property `border-color`.

```
.border{ border-color:rgb(209, 166, 171) }
```

If you want to add a box shadow in that color use:

Here you see how a box with a 4 pixel `rgb(209, 166, 171)` colored shadow looks like.

```
.boxshadow{ -moz-box-shadow:4px 4px 4px  
4px rgb(209, 166, 171); -webkit-box-  
shadow:4px 4px 4px 4px rgb(209, 166, 171);  
box-shadow:4px 4px 4px 4px rgb(209, 166,  
171) }
```

Background

The CSS property to change the background color of an element to YUV 179.4270, -4.1545, 25.9355 is called "background". The background property can be set on classes, ids or directly on the HTML element.

```
.background, #background, body{  
background: rgb(209, 166, 171) }
```

If only the background color should be changed can be used:

```
.background{ background-color: rgb(209,  
166, 171) }
```

This example shows the color as background, it is applied via the CSS property "background".

To optimize and compress your CSS code, you can use our [online CSS compressor and optimizer](#) based on csstidy. If you want to create a linear or radial gradient as background or border, check our [CSS Gradient Generator](#).

Hey! You found this booklet interesting? Support Converting Colors with the new Membership Option!

The pro membership hides all ads, plus gives you double the colors in the color bucket, and more awesome pro features!

[Learn more, Memberships starting at \\$2.50/m!](#)

**Follow me
on Twitter!**

@ConvertingColor