

Converting Colors

YUV(179.4390, -25.8524,
32.0640)

Have a look what the booklet for
YUV(179.4390, -25.8524, 32.0640)
contains.

YUV(179.4390, -25.8524, 32.0640)	3
<i>Conversions</i>	4
<i>Details</i>	6
<i>Harmonies</i>	12
<i>Previews</i>	24
<i>Color Blindness Simulation</i>	28
<i>CSS Examples</i>	31

Color

**YUV(179.4390, -25.8524,
32.0640)**

Conversions

Conversions Part 1

Format	Color
Hex	D8AB7F
RGB	216, 171, 127
RGB Percent	85%, 67%, 50%
CMY	0.1529, 0.3294, 0.5020
CMYK	0.00, 0.21, 0.41, 0.15
HSL	30°, 53%, 67%
HSV	30°, 41%, 85%
XYZ	46.7126, 45.2571, 26.3521
YIQ	179.4390, 40.9440, -4.1440

Conversions

Conversions Part 2

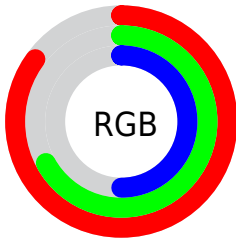
Format	Color
R_{YB}	216, 214, 127
Decimal	14199679
CIE Lab	73.06, 10.70, 28.92
CIE LCh	73, 30.831, 69.698
Yxy	45.2571, 0.3948, 0.3825
Android (android.graphics.Color)	4292389759 (0xFFD8AB7F)
YUV	179.4390, -25.8524, 32.0640
Hunter-Lab	67.2734, 6.2166, 23.8664

Details

The YUV color $179.4390, -25.8524, 32.0640$ is a light color, and the websafe version is hex $CC9966$. A complement of this color would be $163.5610, 25.8524, -32.0640$, and the grayscale version is $180.0000, 0.0000, 0.0000$.

A 20% lighter version of the original color is $229.4270, -24.3675, 22.4275$, and $126.1720, -24.2418, 28.7902$ is the 20% darker color. If you saturate the color by 10%, you get $170.4740, -32.2787, 39.9263$, and if you desaturate by 10%, it is $188.4040, -19.4262, 24.2017$.

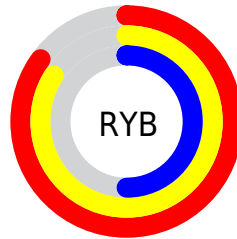
Distribution



Red (85%)

Green (67%)

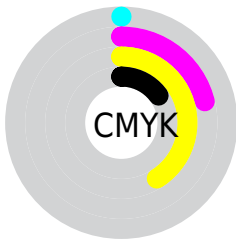
Blue (50%)



Red (85%)

Yellow (84%)

Blue (50%)

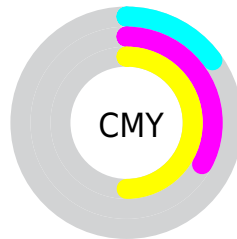


Cyan (0%)

Magenta (21%)

Yellow (41%)

Black (15%)



Cyan (15%)

Magenta (33%)

Yellow (50%)

Brightness & Saturation Gradients

These gradients show how the YUV color 179.4390, -25.8524, 32.0640 changes by changing the brightness by 10 percent. The first figure shows a shift by +10% for each color and the second figure -10%.

Similar to the brightness gradients but the following saturation gradients show a change of the YUV color 179.4390, -25.8524, 32.0640 by changing the saturation by 10% instead.

■ 179.4390,
-25.8524, 32.0640

■ 179.4390,
-25.8524, 32.0640

255.0000, 0.0000,
0.0000

■ 152.0690,
-24.6840, 30.6345

■ 229.4270,
-24.3675, 22.4275

■ 126.1720,
-24.2418, 28.7902

■ 249.6420,
-20.5295, 4.6990

■ 100.8020,
-23.0734, 27.3606

■ 252.8340, -8.2992,
1.8996

■ 76.0190, -22.1944,
25.4163

■ 52.8230, -21.6047,
22.9572

■ 32.2940, -15.9209,
19.9132

■ 10.4430, -5.1484,

18.0285

■ 0.0000, 0.0000,
0.0000

■ 179.4390,
-25.8524, 32.0640

■ 179.4390,
-25.8524, 32.0640

■ 170.4740,
-32.2787, 39.9263

■ 188.4040,
-19.4262, 24.2017

■ 161.6230,
-38.2681, 47.6886

■ 197.2550,
-13.4367, 16.4394

■ 152.6580,
-44.6944, 55.5509

■ 206.2200, -7.0105,
8.5771

■ 143.8070,
-50.6839, 63.3133

■ 215.0710, -1.0210,
0.8147

■ 134.8420,
-57.1101, 71.1756

■ 224.0360, 5.4053,
-7.0476

■ 127.3930,
-62.8047, 77.7083

■ 232.7730, 10.9579,
-14.7099

■ 238.6430, 8.0640,
-19.8579

■ 243.3390, 5.7489,
-23.9763

Harmonies

Analogous

The Analogous color harmony consists of three colors that are next to each other on the color wheel.



180.9920, -17.7441, 44.7340



179.4390, -25.8524, 32.0640



177.0790, -26.6609, 11.3317

Triad

The Triadic color harmony groups three colors that are evenly spaced from another and form a triangle on the color wheel.



179.4390, -25.8524, 32.0640



165.1990, 11.2409, -58.9335



182.9300, 19.7545, 10.5854

Complementary

The Complementary color scheme is a pair of colors which are on the opposite of each other on the color wheel.



179.4390, -25.8524, 32.0640



163.5610, 25.8524, -32.0640

Split Complementary

Split-complementary colors differ from the complementary color scheme. The scheme consists of three colors, the original color and two neighbors of the complement color.



178.5070, 27.8510, -19.7386



179.4390, -25.8524, 32.0640



164.5970, 24.3557, -65.4216

Square

The Square scheme is like the rectangle color scheme, but the four colors are evenly spaced on the color wheel.



179.4390, -25.8524, 32.0640



169.0910, -4.9749, -37.7908



171.1890, 29.9798, -49.2778



183.9840, 7.8959, 34.2170

Rectangle

The Rectangle color scheme consists of four colors that form a rectangle on the color wheel.



179.4390, -25.8524, 32.0640



174.8320, -22.1022, -4.2377



171.1890, 29.9798, -49.2778



181.6730, 22.8392, 1.1638

Sweetspot

The Sweet Spot groups the original color and five complimentary colors.



179.4390, -25.8524, 32.0640



242.6610, -9.1999, 10.8213



158.8550, 6.9735, 50.1162



120.0780, -4.9685, 6.9476



0.0000, 0.0000, 0.0000



128.0000, 0.0000, 0.0000

Same Dimension

The Same Dimension uses a secret algorithm to generate beautiful new colors.



179.4390, -25.8524, 32.0640



203.7690, -36.3681, 44.9296



205.2670, -38.5856, 9.4128



102.8110, -3.3578, 3.6738



100.4370, -49.5154, 61.8838



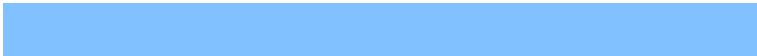
25.1840, -12.4157, 15.6246

Inverse Universe

The Inverse Universe completely reimagines the original color for something new.



163.5610, 25.8524, -32.0640



181.2310, 36.3681, -44.9296



137.7330, 38.5856, -9.4128



100.7760, 3.0684, -4.1886



69.9760, 49.8048, -61.3690



17.8160, 12.4157, -15.6246

Previews

White Background



This preview shows how the YUV color 179.4390, -25.8524, 32.0640 looks on a white background.

Color Contrast Check

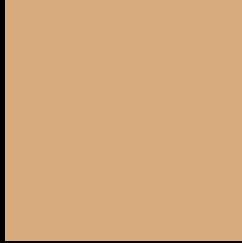
Large Text (above 18pt) WCAG AA × Fail

Any Text WCAG AA × Fail

Large Text (above 18pt) WCAG AAA × Fail

Any Text WCAG AAA × Fail

Black Background



This preview shows how the YUV color 179.4390, -25.8524, 32.0640 looks on a black background.

Color Contrast Check

Large Text (above 18pt) WCAG AA ✓ Pass

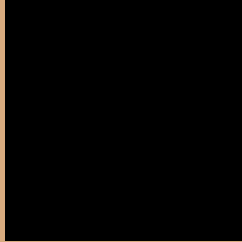
Any Text WCAG AA ✓ Pass

Large Text (above 18pt) WCAG AAA ✓ Pass

Any Text WCAG AAA ✓ Pass

If you want to check with other color combinations, try the [Color Contrast Checker](#).

YUV 179.4390, -25.8524, 32.0640 Background



This preview shows how black text looks on a background with the YUV color 179.4390, -25.8524, 32.0640.



This preview shows how white text looks on a background with the YUV color 179.4390, -25.8524,

Color Blindness Simulation

Color vision deficiency is a very complex topic, and I could not describe the different causes any better than Wikipedia does, so if you want to learn more, you should check out their [article about color blindness](#).

Dichromacy



Original Color

179.4390, -25.8524, 32.0640

Protanopia

177.7140, -23.0300, 13.4058

Deuteranopia

179.4280, -25.8470, 30.3196



Tritanopia

182.5250, -2.7238, 33.7426

Trichromacy



Original Color

179.4390, -25.8524, 32.0640

Protanomaly

178.2310, -23.7779, 19.9684

Deuteranomaly

179.7270, -25.9944, 30.9344

Tritanomaly

181.6360, -11.1595, 32.7682

Monochromacy



Original Color

179.4390, -25.8524, 32.0640

Achromatopsia

179.0000, 0.0000, 0.0000

Achromatomaly

178.9600, -9.3473, 11.4361

CSS Examples

Text

The CSS property to change the color of the text to YUV 179.4390, -25.8524, 32.0640 is called "color". The color property can be set on classes, ids or directly on the HTML element.

This example shows how text in the color `rgb(216, 171, 127)` looks like.

```
.text, #text, p{  
    color:rgb(216, 171, 127)  
}
```

If you want to add a text shadow in that color use the text-shadow property, you can generate a text shadow directly with our [CSS Text Shadow Generator](#).

Here you see how black text with a 4 pixel rgb(216, 171, 127) colored shadow looks like.

```
.shadow{ text-shadow: 4px 4px 2px rgb(216, 171, 127) }
```

Border

The CSS property to change the border of an element to YUV 179.4390, -25.8524, 32.0640 is called "border".

The border property can be set on classes, ids or directly on the HTML element.

This example shows the color as border, it can be applied via the CSS property "border" or "border-color".

```
.border, #border, table{ border:4px solid rgb(216, 171, 127) }
```


If only the border color should be changed use the property `border-color`.

```
.border{ border-color:rgb(216, 171, 127) }
```

If you want to add a box shadow in that color use:

Here you see how a box with a 4 pixel `rgb(216, 171, 127)` colored shadow looks like.

```
.boxshadow{ -moz-box-shadow:4px 4px 4px  
4px rgb(216, 171, 127); -webkit-box-  
shadow:4px 4px 4px 4px rgb(216, 171, 127);  
box-shadow:4px 4px 4px 4px rgb(216, 171,  
127) }
```

Background

The CSS property to change the background color of an element to YUV 179.4390, -25.8524, 32.0640 is called "background". The background property can be set on classes, ids or directly on the HTML element.

```
.background, #background, body{  
background: rgb(216, 171, 127) }
```

If only the background color should be changed can be used:

```
.background{ background-color: rgb(216,  
171, 127) }
```

This example shows the color as background, it is applied via the CSS property "background".

To optimize and compress your CSS code, you can use our [online CSS compressor and optimizer](#) based on csstidy. If you want to create a linear or radial gradient as background or border, check our [CSS Gradient Generator](#).

Hey! You found this booklet interesting? Support Converting Colors with the new Membership Option!

The pro membership hides all ads, plus gives you double the colors in the color bucket, and more awesome pro features!

[Learn more, Memberships starting at \\$2.50/m!](#)

**Follow me
on Twitter!**

@ConvertingColor