

Converting Colors

YUV(179.9550, -8.3588,
21.0875)

Have a look what the booklet for
YUV(179.9550, -8.3588, 21.0875)
contains.

YUV(179.9550, -8.3588, 21.0875)	3
<i>Conversions</i>	4
<i>Details</i>	6
<i>Harmonies</i>	12
<i>Previews</i>	24
<i>Color Blindness Simulation</i>	28
<i>CSS Examples</i>	31

Color

**YUV(179.9550, -8.3588,
21.0875)**

Conversions

Conversions Part 1

Format	Color
Hex	CCABA3
RGB	204, 171, 163
RGB Percent	80%, 67%, 64%
CMY	0.2000, 0.3294, 0.3608
CMYK	0.00, 0.16, 0.20, 0.20
HSL	12°, 29%, 72%
HSV	12°, 20%, 80%
XYZ	46.0756, 44.6075, 40.8320
YIQ	179.9550, 22.2360, 4.5080

Conversions

Conversions Part 2

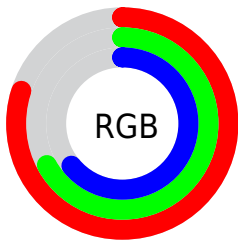
Format	Color
R_{YB}	204, 173, 163
Decimal	13413283
CIE _{Lab}	72.63, 10.74, 8.59
CIE _{LCh}	73, 13.753, 38.648
Yxy	44.6075, 0.3503, 0.3392
Android (android.graphics.Color)	4291603363 (0xFFCCABA3)
YUV	179.9550, -8.3588, 21.0875
Hunter-Lab	66.7889, 6.2612, 10.5047

Details

The YUV color $179.9550, -8.3588, 21.0875$ is a light color, and the websafe version is hex $CC9999$. A complement of this color would be $187.0450, 8.3588, -21.0875$, and the grayscale version is $180.0000, 0.0000, 0.0000$.

A 20% lighter version of the original color is $233.7590, -7.7692, 18.6284$, and $127.0580, -7.9166, 19.2431$ is the 20% darker color. If you saturate the color by 10%, you get $168.2830, -12.4645, 31.3238$, and if you desaturate by 10%, it is $191.6270, -4.2531, 10.8511$.

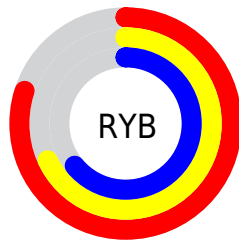
Distribution



Red (80%)

Green (67%)

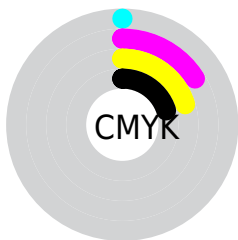
Blue (64%)



Red (80%)

Yellow (68%)

Blue (64%)

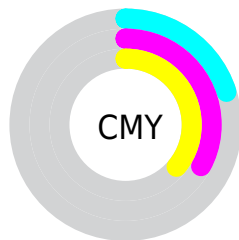


Cyan (0%)

Magenta (16%)

Yellow (20%)

Black (20%)



Cyan (20%)

Magenta (33%)

Yellow (36%)

Brightness & Saturation Gradients

These gradients show how the YUV color 179.9550, -8.3588, 21.0875 changes by changing the brightness by 10 percent. The first figure shows a shift by +10% for each color and the second figure -10%.

Similar to the brightness gradients but the following saturation gradients show a change of the YUV color 179.9550, -8.3588, 21.0875 by changing the saturation by 10% instead.

 179.9550, -8.3588,
21.0875


 179.9550, -8.3588,
21.0875

255.0000, 0.0000,
0.0000


 152.7700, -7.7746,
20.3727


 233.7590, -7.7692,
18.6284


 127.0580, -7.9166,
19.2431

 253.9740, -3.9312,
0.8998

 101.8730, -7.3324,
18.5284

 77.6880, -6.7482,
17.8136

 54.7910, -6.3060,
15.9693

 33.1930, -6.0111,
14.7397

 9.5570, -4.7116,

17.9285

0.0000, 0.0000,
0.0000

179.9550, -8.3588,
21.0875

179.9550, -8.3588,
21.0875

168.2830,
-12.4645, 31.3238

191.6270, -4.2531,
10.8511

155.9100,
-16.7176, 42.1749

204.0000, 0.0000,
0.0000

144.2380,
-20.8233, 52.4113

215.6720, 4.1057,
-10.2363

131.8650,
-25.0764, 63.2624

228.0450, 8.3588,
-21.0875

120.1930,
-29.1821, 73.4987

238.5770, 8.0965,
-30.3240

■ 107.9340,
-32.9985, 84.2499

■ 239.7510, 7.5178,
-31.3536

■ 96.1480, -37.5410,
94.5862

■ 84.4760, -41.6467,
104.8225

Harmonies

Analogous

The Analogous color harmony consists of three colors that are next to each other on the color wheel.



181.0350, -2.9753, 21.0173



179.9550, -8.3588, 21.0875



178.7110, -11.6895, 16.0395

Triad

The Triadic color harmony groups three colors that are evenly spaced from another and form a triangle on the color wheel.



179.9550, -8.3588, 21.0875



174.8040, -2.8614, -15.6141



178.1590, 12.2466, -8.0324

Complementary

The Complementary color scheme is a pair of colors which are on the opposite of each other on the color wheel.



179.9550, -8.3588, 21.0875



187.0450, 8.3588, -21.0875

Split Complementary

Split-complementary colors differ from the complementary color scheme. The scheme consists of three colors, the original color and two neighbors of the complement color.



176.0930, 12.2792, -18.4986



179.9550, -8.3588, 21.0875



174.0680, 3.4175, -22.8616

Square

The Square scheme is like the rectangle color scheme, but the four colors are evenly spaced on the color wheel.



179.9550, -8.3588, 21.0875



175.6760, -8.7143, -4.9779



174.5500, 9.0958, -24.1614



180.0250, 8.8617, 4.3631

Rectangle

The Rectangle color scheme consists of four colors that form a rectangle on the color wheel.



179.9550, -8.3588, 21.0875



177.8520, -12.2520, 9.7768



174.5500, 9.0958, -24.1614



177.2510, 12.6943, -11.6211

Sweetspot

The Sweet Spot groups the original color and five complimentary colors.



179.9550, -8.3588, 21.0875



246.2460, -3.0793, 7.6773



179.0210, 8.3706, 21.9066



122.2780, -1.6161, 5.0182



0.0000, 0.0000, 0.0000



128.0000, 0.0000, 0.0000

Same Dimension

The Same Dimension uses a secret algorithm to generate beautiful new colors.



179.9550, -8.3588, 21.0875



219.2830, -12.4645, 31.3238



191.6950, -14.1466, 10.7915



96.1640, -2.0529, 5.1182



68.4180, -33.7301, 85.5794



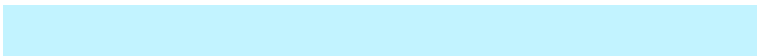
15.4710, -7.6272, 19.7579

Inverse Universe

The Inverse Universe completely reimagines the original color for something new.



187.0450, 8.3588, -21.0875



229.7170, 12.4645, -31.3238



175.3050, 14.1466, -10.7915



97.8360, 2.0529, -5.1182



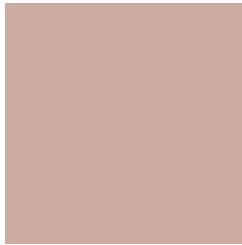
96.9950, 34.0195, -85.0646



22.5290, 7.6272, -19.7579

Previews

White Background



This preview shows how the YUV color 179.9550, -8.3588, 21.0875 looks on a white background.

Color Contrast Check

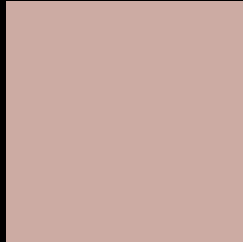
Large Text (above 18pt) WCAG AA × Fail

Any Text WCAG AA × Fail

Large Text (above 18pt) WCAG AAA × Fail

Any Text WCAG AAA × Fail

Black Background



This preview shows how the YUV color 179.9550, -8.3588, 21.0875 looks on a black background.

Color Contrast Check

Large Text (above 18pt) WCAG AA ✓ Pass

Any Text WCAG AA ✓ Pass

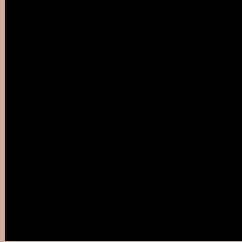
Large Text (above 18pt) WCAG AAA ✓ Pass

Any Text WCAG AAA ✓ Pass

If you want to check with other color combinations, try the [Color Contrast Checker](#).

YUV 179.9550, -8.3588, 21.0875

Background



This preview shows how black text looks on a background with the YUV color 179.9550, -8.3588, 21.0875.



This preview shows how white text looks on a background with the YUV color 179.9550, -8.3588,

21.0875.

Color Blindness Simulation

Color vision deficiency is a very complex topic, and I could not describe the different causes any better than Wikipedia does, so if you want to learn more, you should check out their [article about color blindness](#).

Dichromacy



Original Color

179.9550, -8.3588, 21.0875

Protanopia

178.5400, -5.6892, 4.7884

Deuteranopia

179.6450, -8.2060, 18.7283



Tritanopia

180.8440, 0.0769, 22.0618

Trichromacy



Original Color

179.9550, -8.3588, 21.0875

Protanomaly

178.7580, -6.2897, 10.7362

Deuteranomaly

179.9440, -8.3534, 19.3431

Tritanomaly

180.3340, -3.1227, 21.6321

Monochromacy



Original Color

179.9550, -8.3588, 21.0875

Achromatopsia

180.0000, 0.0000, 0.0000

Achromatomaly

180.2460, -3.0793, 7.6773

CSS Examples

Text

The CSS property to change the color of the text to YUV 179.9550, -8.3588, 21.0875 is called "color". The color property can be set on classes, ids or directly on the HTML element.

This example shows how text in the color `rgb(204, 171, 163)` looks like.

```
.text, #text, p{  
    color:rgb(204, 171, 163)  
}
```

If you want to add a text shadow in that color use the text-shadow property, you can generate a text shadow directly with our [CSS Text Shadow Generator](#).

Here you see how black text with a 4 pixel rgb(204, 171, 163) colored shadow looks like.

```
.shadow{ text-shadow: 4px 4px 2px rgb(204, 171, 163) }
```

Border

The CSS property to change the border of an element to YUV 179.9550, -8.3588, 21.0875 is called "border". The border property can be set on classes, ids or directly on the HTML element.

This example shows the color as border, it can be applied via the CSS property "border" or "border-color".

```
.border, #border, table{ border:4px solid rgb(204, 171, 163) }
```


If only the border color should be changed use the property `border-color`.

```
.border{ border-color:rgb(204, 171, 163) }
```

If you want to add a box shadow in that color use:

Here you see how a box with a 4 pixel `rgb(204, 171, 163)` colored shadow looks like.

```
.boxshadow{ -moz-box-shadow:4px 4px 4px  
4px rgb(204, 171, 163); -webkit-box-  
shadow:4px 4px 4px 4px rgb(204, 171, 163);  
box-shadow:4px 4px 4px 4px rgb(204, 171,  
163) }
```

Background

The CSS property to change the background color of an element to YUV 179.9550, -8.3588, 21.0875 is called "background". The background property can be set on classes, ids or directly on the HTML element.

```
.background, #background, body{  
background: rgb(204, 171, 163) }
```

If only the background color should be changed can be used:

```
.background{ background-color: rgb(204,  
171, 163) }
```

This example shows the color as background, it is applied via the CSS property "background".

To optimize and compress your CSS code, you can use our [online CSS compressor and optimizer](#) based on csstidy. If you want to create a linear or radial gradient as background or border, check our [CSS Gradient Generator](#).

Hey! You found this booklet interesting? Support Converting Colors with the new Membership Option!

The pro membership hides all ads, plus gives you double the colors in the color bucket, and more awesome pro features!

[Learn more, Memberships starting at \\$2.50/m!](#)

**Follow me
on Twitter!**

@ConvertingColor