

Converting Colors

YUV(180.0330, -13.3273,
28.0351)

Have a look what the booklet for
YUV(180.0330, -13.3273, 28.0351)
contains.

YUV(180.0330, -13.3273, 28.0351)	3
<i>Conversions</i>	4
<i>Details</i>	6
<i>Harmonies</i>	12
<i>Previews</i>	24
<i>Color Blindness Simulation</i>	28
<i>CSS Examples</i>	31

Color

**YUV(180.0330, -13.3273,
28.0351)**

Conversions

Conversions Part 1

Format	Color
Hex	D4A999
RGB	212, 169, 153
RGB Percent	83%, 66%, 60%
CMY	0.1686, 0.3373, 0.4000
CMYK	0.00, 0.20, 0.28, 0.17
HSL	16°, 41%, 72%
HSV	16°, 28%, 83%
XYZ	47.0891, 44.6729, 36.2779
YIQ	180.0330, 30.7640, 4.1400

Conversions

Conversions Part 2

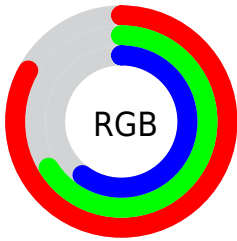
Format	Color
R _Y B	212, 175, 153
Decimal	13937049
CIE Lab	72.68, 13.41, 14.24
CIE LCh	73, 19.561, 46.709
Yxy	44.6729, 0.3678, 0.3489
Android (android.graphics.Color)	4292127129 (0xFFD4A999)
YUV	180.0330, -13.3273, 28.0351
Hunter-Lab	66.8378, 8.7922, 14.6053

Details

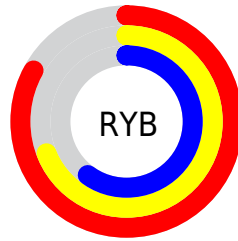
The YUV color $180.0330, -13.3273, 28.0351$ is a light color, and the websafe version is hex $CC9999$. A complement of this color would be $184.9670, 13.3273, -28.0351$, and the grayscale version is $180.0000, 0.0000, 0.0000$.

A 20% lighter version of the original color is $231.3310, -11.9952, 20.7577$, and $126.9510, -12.3008, 25.4760$ is the 20% darker color. If you saturate the color by 10%, you get $168.8340, -18.1592, 37.8566$, and if you desaturate by 10%, it is $191.2320, -8.4954, 18.2135$.

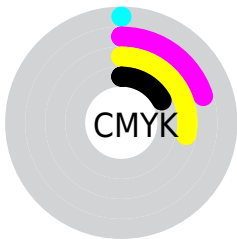
Distribution



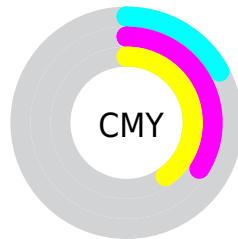
- Red (83%)
- Green (66%)
- Blue (60%)



- Red (83%)
- Yellow (69%)
- Blue (60%)



- Cyan (0%)
- Magenta (20%)
- Yellow (28%)
- Black (17%)



- Cyan (17%)
- Magenta (34%)
- Yellow (40%)

Brightness & Saturation Gradients

These gradients show how the YUV color 180.0330, -13.3273, 28.0351 changes by changing the brightness by 10 percent. The first figure shows a shift by +10% for each color and the second figure -10%.

Similar to the brightness gradients but the following saturation gradients show a change of the YUV color 180.0330, -13.3273, 28.0351 by changing the saturation by 10% instead.

■ 180.0330,
-13.3273, 28.0351

■ 180.0330,
-13.3273, 28.0351

255.0000, 0.0000,
0.0000

■ 152.8480,
-12.7431, 27.3203

■ 231.3310,
-11.9952, 20.7577

■ 126.9510,
-12.3008, 25.4760

■ 251.6600, -7.7204,
2.9292

■ 101.7660,
-11.7166, 24.7612

■ 77.2820, -10.9850,
23.4317

■ 54.4990, -10.1060,
21.4874

■ 32.1890, -9.9532,
19.1282

■ 9.8670, -4.8644,

20.2876

0.0000, 0.0000,
0.0000

180.0330,
-13.3273, 28.0351

180.0330,
-13.3273, 28.0351

168.8340,
-18.1592, 37.8566

191.2320, -8.4954,
18.2135

157.0480,
-22.7017, 48.1929

203.0180, -3.9529,
7.8772

145.7350,
-27.9704, 58.1144

214.3310, 1.3158,
-2.0443

133.9490,
-32.5129, 68.4507

226.1170, 5.8583,
-12.3806

122.7500,
-37.3447, 78.2722

236.8600, 8.9430,
-21.8022

■ 110.9640,
-41.8873, 88.6086

■ 242.1430, 6.3385,
-26.4354

■ 99.7650, -46.7191,
98.4301

■ 96.8470, -47.7456,
100.9892

Harmonies

Analogous

The Analogous color harmony consists of three colors that are next to each other on the color wheel.



181.2920, -6.0600, 30.4389



180.0330, -13.3273, 28.0351



178.3540, -16.9365, 18.9835

Triad

The Triadic color harmony groups three colors that are evenly spaced from another and form a triangle on the color wheel.



180.0330, -13.3273, 28.0351



172.0800, -1.5184, -26.3802



178.6090, 16.4618, -6.6731

Complementary

The Complementary color scheme is a pair of colors which are on the opposite of each other on the color wheel.



180.0330, -13.3273, 28.0351



184.9670, 13.3273, -28.0351

Split Complementary

Split-complementary colors differ from the complementary color scheme. The scheme consists of three colors, the original color and two neighbors of the complement color.



175.3680, 18.5526, -24.0017



180.0330, -13.3273, 28.0351



171.5440, 8.1128, -35.5571

Square

The Square scheme is like the rectangle color scheme, but the four colors are evenly spaced on the color wheel.



180.0330, -13.3273, 28.0351



174.1760, -10.4398, -11.5554



172.4930, 15.5330, -35.5124



181.5250, 10.5872, 10.9406

Rectangle

The Rectangle color scheme consists of four colors that form a rectangle on the color wheel.



180.0330, -13.3273, 28.0351



177.0000, -16.7620, 9.6470



172.4930, 15.5330, -35.5124



178.2060, 17.6464, -13.3357

Sweetspot

The Sweet Spot groups the original color and five complimentary colors.



180.0330, -13.3273, 28.0351



243.9150, -4.3951, 9.7215



175.5430, 10.0853, 31.9728



120.6480, -2.7845, 6.4477



0.0000, 0.0000, 0.0000



128.0000, 0.0000, 0.0000

Same Dimension

The Same Dimension uses a secret algorithm to generate beautiful new colors.



180.0330, -13.3273, 28.0351



209.6170, -19.0382, 39.8009



197.0560, -21.7196, 13.1059



101.0500, -2.4896, 5.2182



78.1310, -38.5186, 81.4461



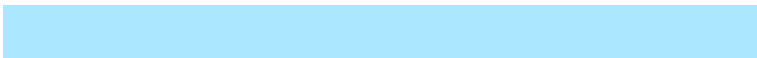
19.9010, -9.8112, 20.2578

Inverse Universe

The Inverse Universe completely reimagines the original color for something new.



184.9670, 13.3273, -28.0351



216.3830, 19.0382, -39.8009



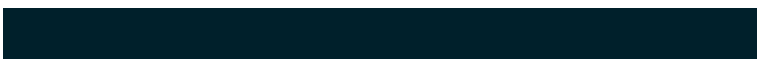
167.9440, 21.7196, -13.1059



101.9500, 2.4897, -5.2181



92.8690, 38.5186, -81.4461



23.6860, 9.5218, -20.7726

Previews

White Background



This preview shows how the YUV color 180.0330, -13.3273, 28.0351 looks on a white background.

Color Contrast Check

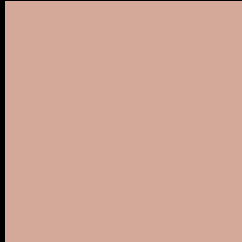
Large Text (above 18pt) WCAG AA × Fail

Any Text WCAG AA × Fail

Large Text (above 18pt) WCAG AAA × Fail

Any Text WCAG AAA × Fail

Black Background



This preview shows how the YUV color 180.0330, -13.3273, 28.0351 looks on a black background.

Color Contrast Check

Large Text (above 18pt) WCAG AA ✓ Pass

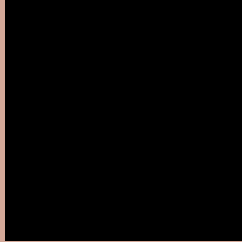
Any Text WCAG AA ✓ Pass

Large Text (above 18pt) WCAG AAA ✓ Pass

Any Text WCAG AAA ✓ Pass

If you want to check with other color combinations, try the [Color Contrast Checker](#).

YUV 180.0330, -13.3273, 28.0351 Background



This preview shows how black text looks on a background with the YUV color 180.0330, -13.3273, 28.0351.



This preview shows how white text looks on a background with the YUV color 180.0330, -13.3273,

Color Blindness Simulation

Color vision deficiency is a very complex topic, and I could not describe the different causes any better than Wikipedia does, so if you want to learn more, you should check out their [article about color blindness](#).

Dichromacy



Original Color

180.0330, -13.3273, 28.0351

Protanopia

178.4110, -10.0626, 7.5326

Deuteranopia

179.5870, -13.6004, 22.2872



Tritanopia

181.4320, -1.6920, 29.4391

Trichromacy



Original Color

180.0330, -13.3273, 28.0351

Protanomaly

179.1130, -11.3947, 14.8099

Deuteranomaly

179.8970, -13.7532, 24.6463

Tritanomaly

180.6940, -5.7651, 29.2094

Monochromacy



Original Color

180.0330, -13.3273, 28.0351

Achromatopsia

180.0000, 0.0000, 0.0000

Achromatomaly

180.1000, -4.9793, 10.4363

CSS Examples

Text

The CSS property to change the color of the text to YUV 180.0330, -13.3273, 28.0351 is called "color". The color property can be set on classes, ids or directly on the HTML element.

This example shows how text in the color `rgb(212, 169, 153)` looks like.

```
.text, #text, p{  
    color:rgb(212, 169, 153)  
}
```

If you want to add a text shadow in that color use the text-shadow property, you can generate a text shadow directly with our [CSS Text Shadow Generator](#).

Here you see how black text with a 4 pixel rgb(212, 169, 153) colored shadow looks like.

```
.shadow{ text-shadow: 4px 4px 2px rgb(212, 169, 153) }
```

Border

The CSS property to change the border of an element to YUV 180.0330, -13.3273, 28.0351 is called "border".

The border property can be set on classes, ids or directly on the HTML element.

This example shows the color as border, it can be applied via the CSS property "border" or "border-color".

```
.border, #border, table{ border:4px solid rgb(212, 169, 153) }
```


If only the border color should be changed use the property `border-color`.

```
.border{ border-color:rgb(212, 169, 153) }
```

If you want to add a box shadow in that color use:

Here you see how a box with a 4 pixel `rgb(212, 169, 153)` colored shadow looks like.

```
.boxshadow{ -moz-box-shadow:4px 4px 4px  
4px rgb(212, 169, 153); -webkit-box-  
shadow:4px 4px 4px 4px rgb(212, 169, 153);  
box-shadow:4px 4px 4px 4px rgb(212, 169,  
153) }
```

Background

The CSS property to change the background color of an element to YUV 180.0330, -13.3273, 28.0351 is called "background". The background property can be set on classes, ids or directly on the HTML element.

```
.background, #background, body{  
background: rgb(212, 169, 153) }
```

If only the background color should be changed can be used:

```
.background{ background-color: rgb(212,  
169, 153) }
```

This example shows the color as background, it is applied via the CSS property "background".

To optimize and compress your CSS code, you can use our [online CSS compressor and optimizer](#) based on csstidy. If you want to create a linear or radial gradient as background or border, check our [CSS Gradient Generator](#).

Hey! You found this booklet interesting? Support Converting Colors with the new Membership Option!

The pro membership hides all ads, plus gives you double the colors in the color bucket, and more awesome pro features!

[Learn more, Memberships starting at \\$2.50/m!](#)

**Follow me
on Twitter!**

@ConvertingColor