

Converting Colors

YUV(180.2500, -12.4482,
26.0907)

Have a look what the booklet for
YUV(180.2500, -12.4482, 26.0907)
contains.

YUV(180.2500, -12.4482, 26.0907)	3
<i>Conversions</i>	4
<i>Details</i>	6
<i>Harmonies</i>	12
<i>Previews</i>	24
<i>Color Blindness Simulation</i>	28
<i>CSS Examples</i>	31

Color

**YUV(180.2500, -12.4482,
26.0907)**

Conversions

Conversions Part 1

Format	Color
Hex	D2AA9B
RGB	210, 170, 155
RGB Percent	82%, 67%, 61%
CMY	0.1765, 0.3333, 0.3922
CMYK	0.00, 0.19, 0.26, 0.18
HSL	16°, 38%, 72%
HSV	16°, 26%, 82%
XYZ	46.8695, 44.8176, 37.1907
YIQ	180.2500, 28.6550, 3.8150

Conversions

Conversions Part 2

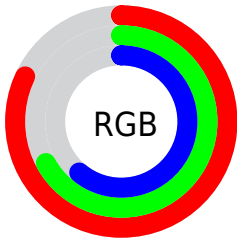
Format	Color
R _Y B	210, 176, 155
Decimal	13806235
CIE Lab	72.77, 12.38, 13.25
CIE LCh	73, 18.137, 46.933
Yxy	44.8176, 0.3637, 0.3478
Android (android.graphics.Color)	4291996315 (0xFFD2AA9B)
YUV	180.2500, -12.4482, 26.0907
Hunter-Lab	66.9460, 7.8139, 13.9246

Details

The YUV color $180.2500, -12.4482, 26.0907$ is a light color, and the websafe version is hex $CC9999$. A complement of this color would be $184.7500, 12.4482, -26.0907$, and the grayscale version is $180.0000, 0.0000, 0.0000$.

A 20% lighter version of the original color is $232.1460, -11.4110, 20.0430$, and $127.4670, -11.5692, 24.1464$ is the 20% darker color. If you saturate the color by 10%, you get $169.0510, -17.2801, 35.9123$, and if you desaturate by 10%, it is $191.4490, -7.6164, 16.2692$.

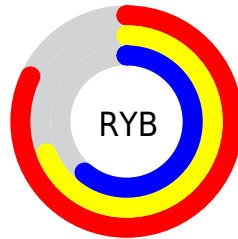
Distribution



Red (82%)

Green (67%)

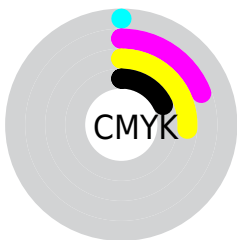
Blue (61%)



Red (82%)

Yellow (69%)

Blue (61%)

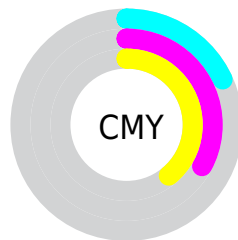


Cyan (0%)

Magenta (19%)

Yellow (26%)

Black (18%)



Cyan (18%)

Magenta (33%)

Yellow (39%)

Brightness & Saturation Gradients

These gradients show how the YUV color 180.2500, -12.4482, 26.0907 changes by changing the brightness by 10 percent. The first figure shows a shift by +10% for each color and the second figure -10%.

Similar to the brightness gradients but the following saturation gradients show a change of the YUV color 180.2500, -12.4482, 26.0907 by changing the saturation by 10% instead.

■ 180.2500,
-12.4482, 26.0907

■ 180.2500,
-12.4482, 26.0907

255.0000, 0.0000,
0.0000

■ 153.0650,
-11.8640, 25.3760

■ 232.1460,
-11.4110, 20.0430

■ 127.4670,
-11.5692, 24.1464

■ 252.4750, -7.1362,
2.2144

■ 101.9830,
-10.8376, 22.8169

■ 77.4990, -10.1060,
21.4874

■ 54.6020, -9.6638,
19.6430

■ 32.7050, -9.2216,
17.7987

■ 9.5680, -4.7170,

19.6729

■ 0.0000, 0.0000,
0.0000

■ 180.2500,
-12.4482, 26.0907

■ 180.2500,
-12.4482, 26.0907

■ 169.0510,
-17.2801, 35.9123

■ 191.4490, -7.6164,
16.2692

■ 157.2650,
-21.8226, 46.2486

■ 203.2350, -3.0739,
5.9329

■ 146.0660,
-26.6545, 56.0701

■ 214.4340, 1.7580,
-3.8886

■ 134.8670,
-31.4864, 65.8916

■ 225.6330, 6.5899,
-13.7101

■ 123.6680,
-36.3183, 75.7132

■ 236.2620, 9.2378,
-23.0318

■ 111.8820,
-40.8608, 86.0495

■ 241.5450, 6.6333,
-27.6650

■ 100.6830,
-45.6927, 95.8710

■ 96.2490, -47.4508,
99.7596

Harmonies

Analogous

The Analogous color harmony consists of three colors that are next to each other on the color wheel.



181.3950, -5.6177, 28.5946



180.2500, -12.4482, 26.0907



178.9840, -15.7681, 17.5540

Triad

The Triadic color harmony groups three colors that are evenly spaced from another and form a triangle on the color wheel.



180.2500, -12.4482, 26.0907



173.2050, -1.0871, -24.7358



179.2670, 15.1514, -6.3732

Complementary

The Complementary color scheme is a pair of colors which are on the opposite of each other on the color wheel.



180.2500, -12.4482, 26.0907



184.7500, 12.4482, -26.0907

Split Complementary

Split-complementary colors differ from the complementary color scheme. The scheme consists of three colors, the original color and two neighbors of the complement color.



175.9230, 16.8000, -21.8575



180.2500, -12.4482, 26.0907



172.1530, 7.8126, -32.5832

Square

The Square scheme is like the rectangle color scheme, but the four colors are evenly spaced on the color wheel.



180.2500, -12.4482, 26.0907



175.1160, -9.4242, -10.6257



173.1730, 14.2117, -31.7237



180.9980, 9.8610, 10.5258

Rectangle

The Rectangle color scheme consists of four colors that form a rectangle on the color wheel.



180.2500, -12.4482, 26.0907



177.9290, -15.7410, 8.8323



173.1730, 14.2117, -31.7237



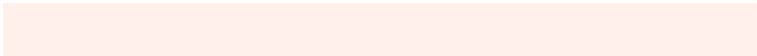
178.4620, 16.0412, -11.8062

Sweetspot

The Sweet Spot groups the original color and five complimentary colors.



180.2500, -12.4482, 26.0907



243.9150, -4.3951, 9.7215



176.0050, 9.3645, 29.8136



120.6480, -2.7845, 6.4477



0.0000, 0.0000, 0.0000



128.0000, 0.0000, 0.0000

Same Dimension

The Same Dimension uses a secret algorithm to generate beautiful new colors.



180.2500, -12.4482, 26.0907



212.5350, -18.0118, 37.2418



196.0990, -20.2618, 12.1912



99.0500, -2.4897, 5.2181



77.2340, -38.0764, 79.6018



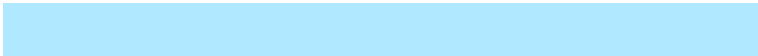
18.7160, -9.2270, 19.5431

Inverse Universe

The Inverse Universe completely reimagines the original color for something new.



184.7500, 12.4482, -26.0907



218.4650, 18.0118, -37.2418



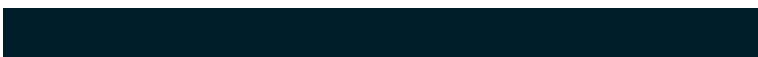
168.9010, 20.2618, -12.1912



99.9500, 2.4897, -5.2181



90.7660, 38.0764, -79.6018



22.2840, 9.2270, -19.5431

Previews

White Background



This preview shows how the YUV color 180.2500, -12.4482, 26.0907 looks on a white background.

Color Contrast Check

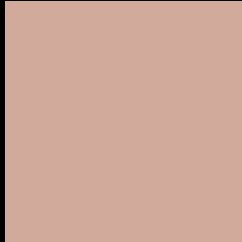
Large Text (above 18pt) WCAG AA × Fail

Any Text WCAG AA × Fail

Large Text (above 18pt) WCAG AAA × Fail

Any Text WCAG AAA × Fail

Black Background



This preview shows how the YUV color 180.2500, -12.4482, 26.0907 looks on a black background.

Color Contrast Check

Large Text (above 18pt) WCAG AA ✓ Pass

Any Text WCAG AA ✓ Pass

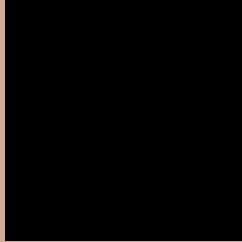
Large Text (above 18pt) WCAG AAA ✓ Pass

Any Text WCAG AAA ✓ Pass

If you want to check with other color combinations, try the [Color Contrast Checker](#).

YUV 180.2500, -12.4482, 26.0907

Background



This preview shows how black text looks on a background with the YUV color 180.2500, -12.4482, 26.0907.



This preview shows how white text looks on a background with the YUV color 180.2500, -12.4482, 26.0907.

Color Blindness Simulation

Color vision deficiency is a very complex topic, and I could not describe the different causes any better than Wikipedia does, so if you want to learn more, you should check out their [article about color blindness](#).

Dichromacy



Original Color

180.2500, -12.4482, 26.0907

Protanopia

178.5250, -9.6258, 7.4326

Deuteranopia

179.9290, -12.2900, 21.9873



Tritanopia

181.5350, -1.2498, 27.5948

Trichromacy



Original Color

180.2500, -12.4482, 26.0907

Protanomaly

179.0420, -10.3737, 13.9952

Deuteranomaly

179.9400, -12.2954, 23.7316

Tritanomaly

180.7970, -5.3229, 27.3650

Monochromacy



Original Color

180.2500, -12.4482, 26.0907

Achromatopsia

180.0000, 0.0000, 0.0000

Achromatomaly

179.9150, -4.3951, 9.7215

CSS Examples

Text

The CSS property to change the color of the text to YUV 180.2500, -12.4482, 26.0907 is called "color". The color property can be set on classes, ids or directly on the HTML element.

This example shows how text in the color `rgb(210, 170, 155)` looks like.

```
.text, #text, p{  
    color:rgb(210, 170, 155)  
}
```

If you want to add a text shadow in that color use the text-shadow property, you can generate a text shadow directly with our [CSS Text Shadow Generator](#).

Here you see how black text with a 4 pixel rgb(210, 170, 155) colored shadow looks like.

```
.shadow{ text-shadow: 4px 4px 2px rgb(210, 170, 155) }
```

Border

The CSS property to change the border of an element to YUV 180.2500, -12.4482, 26.0907 is called "border".

The border property can be set on classes, ids or directly on the HTML element.

This example shows the color as border, it can be applied via the CSS property "border" or "border-color".

```
.border, #border, table{ border:4px solid rgb(210, 170, 155) }
```


If only the border color should be changed use the property `border-color`.

```
.border{ border-color:rgb(210, 170, 155) }
```

If you want to add a box shadow in that color use:

Here you see how a box with a 4 pixel `rgb(210, 170, 155)` colored shadow looks like.

```
.boxshadow{ -moz-box-shadow:4px 4px 4px  
4px rgb(210, 170, 155); -webkit-box-  
shadow:4px 4px 4px 4px rgb(210, 170, 155);  
box-shadow:4px 4px 4px 4px rgb(210, 170,  
155) }
```

Background

The CSS property to change the background color of an element to YUV 180.2500, -12.4482, 26.0907 is called "background". The background property can be set on classes, ids or directly on the HTML element.

```
.background, #background, body{  
background: rgb(210, 170, 155) }
```

If only the background color should be changed can be used:

```
.background{ background-color: rgb(210,  
170, 155) }
```

This example shows the color as background, it is applied via the CSS property "background".

To optimize and compress your CSS code, you can use our [online CSS compressor and optimizer](#) based on csstidy. If you want to create a linear or radial gradient as background or border, check our [CSS Gradient Generator](#).

Hey! You found this booklet interesting? Support Converting Colors with the new Membership Option!

The pro membership hides all ads, plus gives you double the colors in the color bucket, and more awesome pro features!

[Learn more, Memberships starting at \\$2.50/m!](#)

**Follow me
on Twitter!**

@ConvertingColor