

Converting Colors

YUV(180.2660, -9.9911,
31.3387)

Have a look what the booklet for
YUV(180.2660, -9.9911, 31.3387)
contains.

YUV(180.2660, -9.9911, 31.3387)	3
<i>Conversions</i>	4
<i>Details</i>	6
<i>Harmonies</i>	12
<i>Previews</i>	24
<i>Color Blindness Simulation</i>	28
<i>CSS Examples</i>	31

Color

**YUV(180.2660, -9.9911,
31.3387)**

Conversions

Conversions Part 1

Format	Color
Hex	D8A6A0
RGB	216, 166, 160
RGB Percent	85%, 65%, 63%
CMY	0.1529, 0.3490, 0.3725
CMYK	0.00, 0.23, 0.26, 0.15
HSL	6°, 42%, 74%
HSV	6°, 26%, 85%
XYZ	48.3003, 44.4094, 39.2839
YIQ	180.2660, 31.7260, 8.7340

Conversions

Conversions Part 2

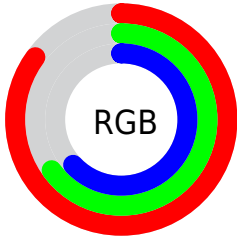
Format	Color
R _Y B	216, 167, 160
Decimal	14198432
CIE Lab	72.50, 17.53, 10.21
CIE LCh	73, 20.286, 30.215
Yxy	44.4094, 0.3659, 0.3365
Android (android.graphics.Color)	4292388512 (0xFFD8A6A0)
YUV	180.2660, -9.9911, 31.3387
Hunter-Lab	66.6404, 12.7543, 11.6974

Details

The YUV color **180.2660, -9.9911, 31.3387** is a light color, and the websafe version is hex **CC9999**. A complement of this color would be **195.7340, 9.9911, -31.3387**, and the grayscale version is **180.0000, 0.0000, 0.0000**.

A 20% lighter version of the original color is **230.4820, -7.6326, 21.5023**, and **127.1840, -8.9647, 28.7796** is the 20% darker color. If you saturate the color by 10%, you get **166.6050, -14.1023, 43.3194**, and if you desaturate by 10%, it is **193.9270, -5.8800, 19.3580**.

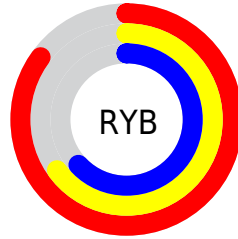
Distribution



Red (85%)

Green (65%)

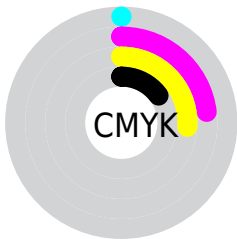
Blue (63%)



Red (85%)

Yellow (65%)

Blue (63%)

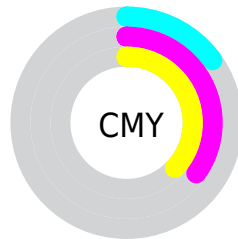


Cyan (0%)

Magenta (23%)

Yellow (26%)

Black (15%)



Cyan (15%)


Magenta (35%)

Yellow (37%)

Brightness & Saturation Gradients


These gradients show how the YUV color 180.2660, -9.9911, 31.3387 changes by changing the brightness by 10 percent. The first figure shows a shift by +10% for each color and the second figure -10%.

Similar to the brightness gradients but the following saturation gradients show a change of the YUV color 180.2660, -9.9911, 31.3387 by changing the saturation by 10% instead.


 180.2660, -9.9911,
31.3387


 180.2660, -9.9911,
31.3387

255.0000, 0.0000,
0.0000


 153.6680, -9.6963,
30.1092


 230.4820, -7.6326,
21.5023


 127.1840, -8.9647,
28.7796

 250.6970, -3.7946,
3.7737

 101.5860, -8.6699,
27.5501

 77.1020, -7.9383,
26.2205

 54.2050, -7.4961,
24.3762

 32.1230, -6.4696,
21.8171

 11.0630, -5.4541,

22.7467

■ 0.0000, 0.0000,
0.0000

■ 180.2660, -9.9911,
31.3387

■ 180.2660, -9.9911,
31.3387

■ 166.6050,
-14.1023, 43.3194

■ 193.9270, -5.8800,
19.3580

■ 152.4710,
-17.4872, 55.7149

■ 208.0610, -2.4951,
6.9625

■ 138.8100,
-21.5983, 67.6956

■ 221.7220, 1.6161,
-5.0182

■ 125.2630,
-25.2727, 79.5763

■ 235.2690, 5.2904,
-16.8989

■ 111.6020,
-29.3838, 91.5570

■ 243.3390, 5.7489,
-23.9763

■ 97.3540, -33.2055,
104.0525

■ 83.8070, -36.8799,
115.9333

■ 78.0850, -38.4959,
120.9515

Harmonies

Analogous

The Analogous color harmony consists of three colors that are next to each other on the color wheel.



181.1330, -1.5446, 28.8244



180.2660, -9.9911, 31.3387



179.2130, -16.3740, 25.2462

Triad

The Triadic color harmony groups three colors that are evenly spaced from another and form a triangle on the color wheel.



180.2660, -9.9911, 31.3387



173.0440, -6.9237, -19.3326



176.5260, 18.9677, -17.1243

Complementary

The Complementary color scheme is a pair of colors which are on the opposite of each other on the color wheel.



180.2660, -9.9911, 31.3387



195.7340, 9.9911, -31.3387

Split Complementary

Split-complementary colors differ from the complementary color scheme. The scheme consists of three colors, the original color and two neighbors of the complement color.



173.0850, 17.7061, -32.5235



180.2660, -9.9911, 31.3387



171.1870, 2.8658, -32.6130

Square

The Square scheme is like the rectangle color scheme, but the four colors are evenly spaced on the color wheel.



180.2660, -9.9911, 31.3387



174.9060, -14.2507, -2.5486



170.6730, 12.4862, -38.3012



179.6100, 14.9823, 1.2190

Rectangle

The Rectangle color scheme consists of four colors that form a rectangle on the color wheel.



180.2660, -9.9911, 31.3387



178.1150, -17.8047, 17.4391



170.6730, 12.4862, -38.3012



175.1940, 19.1314, -22.9721

Sweetspot

The Sweet Spot groups the original color and five complimentary colors.



180.2660, -9.9911, 31.3387



242.1540, -3.5269, 11.2659



182.4440, 13.5851, 29.4286



119.4740, -2.2057, 7.4773



0.0000, 0.0000, 0.0000



128.0000, 0.0000, 0.0000

Same Dimension

The Same Dimension uses a secret algorithm to generate beautiful new colors.



180.2660, -9.9911, 31.3387



204.3170, -13.9603, 44.4490



196.7020, -18.0941, 16.9243



100.4630, -2.2003, 5.7329



61.6950, -30.4156, 95.8605



15.7920, -7.7855, 23.8614

Inverse Universe

The Inverse Universe completely reimagines the original color for something new.



195.7340, 9.9911, -31.3387



226.6830, 13.9603, -44.4490



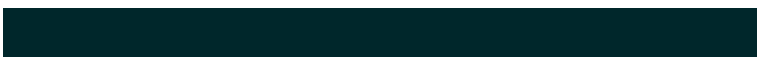
179.2980, 18.0941, -16.9243



103.1240, 1.9109, -6.2477



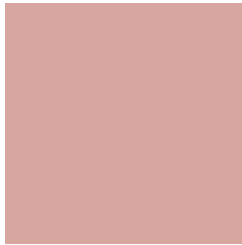
109.3050, 30.4156, -95.8605



27.7950, 7.4961, -24.3762

Previews

White Background



This preview shows how the YUV color 180.2660, -9.9911, 31.3387 looks on a white background.

Color Contrast Check

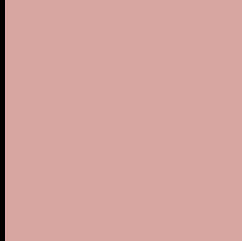
Large Text (above 18pt) WCAG AA × Fail

Any Text WCAG AA × Fail

Large Text (above 18pt) WCAG AAA × Fail

Any Text WCAG AAA × Fail

Black Background



This preview shows how the YUV color 180.2660, -9.9911, 31.3387 looks on a black background.

Color Contrast Check

Large Text (above 18pt) WCAG AA ✓ Pass

Any Text WCAG AA ✓ Pass

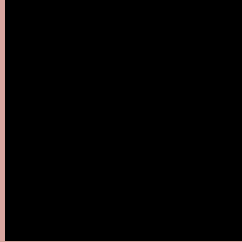
Large Text (above 18pt) WCAG AAA ✓ Pass

Any Text WCAG AAA ✓ Pass

If you want to check with other color combinations, try the [Color Contrast Checker](#).

YUV 180.2660, -9.9911, 31.3387

Background



This preview shows how black text looks on a background with the YUV color 180.2660, -9.9911, 31.3387.



This preview shows how white text looks on a background with the YUV color 180.2660, -9.9911,

Color Blindness Simulation

Color vision deficiency is a very complex topic, and I could not describe the different causes any better than Wikipedia does, so if you want to learn more, you should check out their [article about color blindness](#).

Dichromacy



Original Color

180.2660, -9.9911, 31.3387

Protanopia

177.8390, -5.8366, 5.4032

Deuteranopia

179.4880, -10.1006, 19.7430



Tritanopia

181.5140, -2.7184, 31.9982

Trichromacy



Original Color

180.2660, -9.9911, 31.3387

Protanomaly

178.8510, -7.3215, 15.0397

Deuteranomaly

179.8090, -10.2588, 23.8465

Tritanomaly

181.1180, -5.4812, 31.4685

Monochromacy



Original Color

180.2660, -9.9911, 31.3387

Achromatopsia

180.0000, 0.0000, 0.0000

Achromatomaly

180.1540, -3.5269, 11.2659

CSS Examples

Text

The CSS property to change the color of the text to YUV 180.2660, -9.9911, 31.3387 is called "color". The color property can be set on classes, ids or directly on the HTML element.

This example shows how text in the color `rgb(216, 166, 160)` looks like.

```
.text, #text, p{  
    color:rgb(216, 166, 160)  
}
```

If you want to add a text shadow in that color use the text-shadow property, you can generate a text shadow directly with our [CSS Text Shadow Generator](#).

Here you see how black text with a 4 pixel rgb(216, 166, 160) colored shadow looks like.

```
.shadow{ text-shadow: 4px 4px 2px rgb(216, 166, 160) }
```

Border

The CSS property to change the border of an element to YUV 180.2660, -9.9911, 31.3387 is called "border". The border property can be set on classes, ids or directly on the HTML element.

This example shows the color as border, it can be applied via the CSS property "border" or "border-color".

```
.border, #border, table{ border:4px solid rgb(216, 166, 160) }
```


If only the border color should be changed use the property `border-color`.

```
.border{ border-color:rgb(216, 166, 160) }
```

If you want to add a box shadow in that color use:

Here you see how a box with a 4 pixel `rgb(216, 166, 160)` colored shadow looks like.

```
.boxshadow{ -moz-box-shadow:4px 4px 4px  
4px rgb(216, 166, 160); -webkit-box-  
shadow:4px 4px 4px 4px rgb(216, 166, 160);  
box-shadow:4px 4px 4px 4px rgb(216, 166,  
160) }
```

Background

The CSS property to change the background color of an element to YUV 180.2660, -9.9911, 31.3387 is called "background". The background property can be set on classes, ids or directly on the HTML element.

```
.background, #background, body{  
background: rgb(216, 166, 160) }
```

If only the background color should be changed can be used:

```
.background{ background-color: rgb(216,  
166, 160) }
```

This example shows the color as background, it is applied via the CSS property "background".

To optimize and compress your CSS code, you can use our [online CSS compressor and optimizer](#) based on csstidy. If you want to create a linear or radial gradient as background or border, check our [CSS Gradient Generator](#).

Hey! You found this booklet interesting? Support Converting Colors with the new Membership Option!

The pro membership hides all ads, plus gives you double the colors in the color bucket, and more awesome pro features!

[Learn more, Memberships starting at \\$2.50/m!](#)

**Follow me
on Twitter!**

@ConvertingColor