

Converting Colors

YUV(181.0320, -11.8478,
20.1429)

Have a look what the booklet for
YUV(181.0320, -11.8478, 20.1429)
contains.

YUV(181.0320, -11.8478, 20.1429)	3
<i>Conversions</i>	4
<i>Details</i>	6
<i>Harmonies</i>	12
<i>Previews</i>	24
<i>Color Blindness Simulation</i>	28
<i>CSS Examples</i>	31

Color

**YUV(181.0320, -11.8478,
20.1429)**

Conversions

Conversions Part 1

Format	Color
Hex	CCA9E9D
RGB	204, 174, 157
RGB Percent	80%, 68%, 62%
CMY	0.2000, 0.3176, 0.3843
CMYK	0.00, 0.15, 0.23, 0.20
HSL	22°, 32%, 71%
HSV	22°, 23%, 80%
XYZ	46.1237, 45.5438, 38.2581
YIQ	181.0320, 23.3370, 1.0730

Conversions

Conversions Part 2

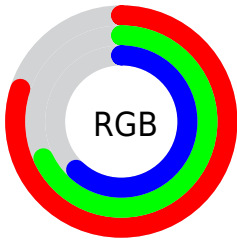
Format	Color
R_{YB}	204, 184, 157
Decimal	13414045
CIE Lab	73.25, 8.22, 12.75
CIE LCh	73, 15.169, 57.175
Yxy	45.5438, 0.3550, 0.3505
Android (android.graphics.Color)	4291604125 (0xFFCCA9D)
YUV	181.0320, -11.8478, 20.1429
Hunter-Lab	67.4861, 3.8958, 13.6286

Details

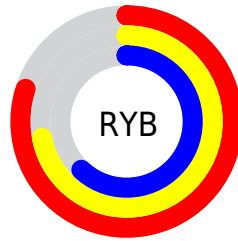
The YUV color $181.0320, -11.8478, 20.1429$ is a light color, and the websafe version is hex $CC9999$. A complement of this color would be $179.9680, 11.8478, -20.1429$, and the grayscale version is $181.0000, 0.0000, 0.0000$.

A 20% lighter version of the original color is $234.8360, -11.2581, 17.6838$, and $128.2490, -10.9688, 18.1986$ is the 20% darker color. If you saturate the color by 10%, you get $171.1210, -16.8217, 28.8349$, and if you desaturate by 10%, it is $190.9430, -6.8739, 11.4510$.

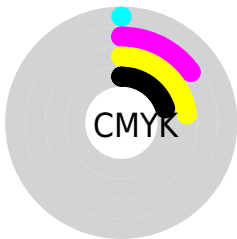
Distribution



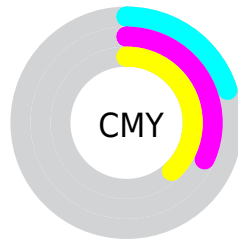
- Red (80%)
- Green (68%)
- Blue (62%)



- Red (80%)
- Yellow (72%)
- Blue (62%)



- Cyan (0%)
- Magenta (15%)
- Yellow (23%)
- Black (20%)



- Cyan (20%)
- Magenta (32%)
- Yellow (38%)

Brightness & Saturation Gradients

These gradients show how the YUV color 181.0320, -11.8478, 20.1429 changes by changing the brightness by 10 percent. The first figure shows a shift by +10% for each color and the second figure -10%.

Similar to the brightness gradients but the following saturation gradients show a change of the YUV color 181.0320, -11.8478, 20.1429 by changing the saturation by 10% instead.

■ 181.0320,
-11.8478, 20.1429

■ 181.0320,
-11.8478, 20.1429

255.0000, 0.0000,
0.0000

■ 153.8470,
-11.2636, 19.4282

■ 234.8360,
-11.2581, 17.6838

■ 128.2490,
-10.9688, 18.1986

■ 253.2900, -6.5520,
1.4997

■ 103.0640,
-10.3846, 17.4839

■ 78.7650, -10.2371,
16.8691

■ 55.3950, -9.0687,
15.4396

■ 33.7970, -8.7739,
14.2100

■ 11.6060, -5.7218,

15.2545

■ 0.0000, 0.0000,
0.0000

■ 181.0320,
-11.8478, 20.1429

■ 181.0320,
-11.8478, 20.1429

■ 171.1210,
-16.8217, 28.8349

■ 190.9430, -6.8739,
11.4510

■ 161.0960,
-22.2323, 37.6268

■ 200.9680, -1.4632,
2.6591

■ 151.1850,
-27.2062, 46.3188

■ 210.8790, 3.5107,
-6.0329

■ 141.1600,
-32.6169, 55.1107

■ 220.9040, 8.9213,
-14.8248

■ 131.2490,
-37.5908, 63.8026

■ 230.3590, 12.1480,
-23.1168

■ 121.3380,
-42.5646, 72.4946

■ 237.9900, 8.3859,
-29.8092

■ 111.3130,
-47.9753, 81.2865

■ 239.7510, 7.5178,
-31.3536

■ 104.4340,
-51.4860, 87.3194

Harmonies

Analogous

The Analogous color harmony consists of three colors that are next to each other on the color wheel.



182.0200, -6.9119, 23.6615



181.0320, -11.8478, 20.1429



179.2220, -13.4204, 11.2063

Triad

The Triadic color harmony groups three colors that are evenly spaced from another and form a triangle on the color wheel.



181.0320, -11.8478, 20.1429



175.1990, 1.3809, -22.9765



181.2740, 11.2039, -0.2403

Complementary

The Complementary color scheme is a pair of colors which are on the opposite of each other on the color wheel.



181.0320, -11.8478, 20.1429



179.9680, 11.8478, -20.1429

Split Complementary

Split-complementary colors differ from the complementary color scheme. The scheme consists of three colors, the original color and two neighbors of the complement color.



178.5820, 14.0101, -13.6654



181.0320, -11.8478, 20.1429



175.3000, 8.2331, -27.4501

Square

The Square scheme is like the rectangle color scheme, but the four colors are evenly spaced on the color wheel.



181.0320, -11.8478, 20.1429



176.0170, -5.9244, -13.1699



176.2880, 13.1690, -23.9316



182.6840, 6.0718, 12.5551

Rectangle

The Rectangle color scheme consists of four colors that form a rectangle on the color wheel.



181.0320, -11.8478, 20.1429



178.1070, -12.3778, 3.4142



176.2880, 13.1690, -23.9316



180.2950, 12.6726, -4.6437

Sweetspot

The Sweet Spot groups the original color and five complimentary colors.



181.0320, -11.8478, 20.1429



246.4910, -4.6791, 7.4624



174.5870, 6.6126, 25.7952



122.6370, -2.7790, 4.7034



0.0000, 0.0000, 0.0000



128.0000, 0.0000, 0.0000

Same Dimension

The Same Dimension uses a secret algorithm to generate beautiful new colors.



181.0320, -11.8478, 20.1429



219.9040, -17.7007, 30.7792



194.5330, -18.5038, 8.3026



96.7510, -2.3422, 4.6034



84.8540, -41.8330, 71.1650



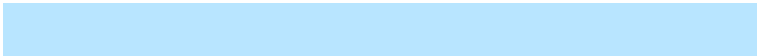
19.5800, -9.6529, 16.1543

Inverse Universe

The Inverse Universe completely reimagines the original color for something new.



179.9680, 11.8478, -20.1429



218.5090, 17.9901, -30.2644



166.4670, 18.5038, -8.3026



96.6620, 2.6316, -4.0886



81.1460, 41.8330, -71.1650



18.4200, 9.6529, -16.1543

Previews

White Background



This preview shows how the YUV color 181.0320, -11.8478, 20.1429 looks on a white background.

Color Contrast Check

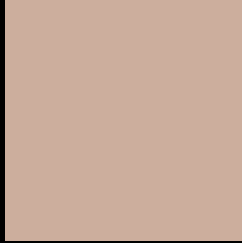
Large Text (above 18pt) WCAG AA × Fail

Any Text WCAG AA × Fail

Large Text (above 18pt) WCAG AAA × Fail

Any Text WCAG AAA × Fail

Black Background



This preview shows how the YUV color 181.0320, -11.8478, 20.1429 looks on a black background.

Color Contrast Check

Large Text (above 18pt) WCAG AA ✓ Pass

Any Text WCAG AA ✓ Pass

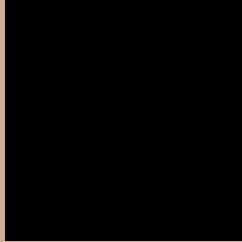
Large Text (above 18pt) WCAG AAA ✓ Pass

Any Text WCAG AAA ✓ Pass

If you want to check with other color combinations, try the [Color Contrast Checker](#).

YUV 181.0320, -11.8478, 20.1429

Background



This preview shows how black text looks on a background with the YUV color 181.0320, -11.8478, 20.1429.



This preview shows how white text looks on a background with the YUV color 181.0320, -11.8478, 20.1429.

Color Blindness Simulation

Color vision deficiency is a very complex topic, and I could not describe the different causes any better than Wikipedia does, so if you want to learn more, you should check out their [article about color blindness](#).

Dichromacy



Original Color

181.0320, -11.8478, 20.1429

Protanopia

179.5250, -9.6258, 7.4326

Deuteranopia

181.0430, -11.8532, 21.8873



Tritanopia

182.5450, 0.2243, 21.4470

Trichromacy



Original Color

181.0320, -11.8478, 20.1429

Protanomaly

180.0310, -10.3683, 12.2508

Deuteranomaly

180.7440, -11.7058, 21.2725

Tritanomaly

181.8070, -3.8489, 21.2173

Monochromacy



Original Color

181.0320, -11.8478, 20.1429

Achromatopsia

181.0000, 0.0000, 0.0000

Achromatomaly

180.6050, -4.2423, 7.3624

CSS Examples

Text

The CSS property to change the color of the text to YUV 181.0320, -11.8478, 20.1429 is called "color". The color property can be set on classes, ids or directly on the HTML element.

This example shows how text in the color `rgb(204, 174, 157)` looks like.

```
.text, #text, p{  
    color:rgb(204, 174, 157)  
}
```

If you want to add a text shadow in that color use the text-shadow property, you can generate a text shadow directly with our [CSS Text Shadow Generator](#).

Here you see how black text with a 4 pixel rgb(204, 174, 157) colored shadow looks like.

```
.shadow{ text-shadow: 4px 4px 2px rgb(204, 174, 157) }
```

Border

The CSS property to change the border of an element to YUV 181.0320, -11.8478, 20.1429 is called "border".

The border property can be set on classes, ids or directly on the HTML element.

This example shows the color as border, it can be applied via the CSS property "border" or "border-color".

```
.border, #border, table{ border:4px solid rgb(204, 174, 157) }
```


If only the border color should be changed use the property `border-color`.

```
.border{ border-color:rgb(204, 174, 157) }
```

If you want to add a box shadow in that color use:

Here you see how a box with a 4 pixel `rgb(204, 174, 157)` colored shadow looks like.

```
.boxshadow{ -moz-box-shadow:4px 4px 4px  
4px rgb(204, 174, 157); -webkit-box-  
shadow:4px 4px 4px 4px rgb(204, 174, 157);  
box-shadow:4px 4px 4px 4px rgb(204, 174,  
157) }
```

Background

The CSS property to change the background color of an element to YUV 181.0320, -11.8478, 20.1429 is called "background". The background property can be set on classes, ids or directly on the HTML element.

```
.background, #background, body{  
background: rgb(204, 174, 157) }
```

If only the background color should be changed can be used:

```
.background{ background-color: rgb(204,  
174, 157) }
```

This example shows the color as background, it is applied via the CSS property "background".

To optimize and compress your CSS code, you can use our [online CSS compressor and optimizer](#) based on csstidy. If you want to create a linear or radial gradient as background or border, check our [CSS Gradient Generator](#).

Hey! You found this booklet interesting? Support Converting Colors with the new Membership Option!

The pro membership hides all ads, plus gives you double the colors in the color bucket, and more awesome pro features!

[Learn more, Memberships starting at \\$2.50/m!](#)

**Follow me
on Twitter!**

@ConvertingColor