

Converting Colors

YUV(181.0980, -11.8803,
30.6091)

Have a look what the booklet for
YUV(181.0980, -11.8803, 30.6091)
contains.

YUV(181.0980, -11.8803, 30.6091)	3
<i>Conversions</i>	4
<i>Details</i>	6
<i>Harmonies</i>	12
<i>Previews</i>	24
<i>Color Blindness Simulation</i>	28
<i>CSS Examples</i>	31

Color

**YUV(181.0980, -11.8803,
30.6091)**

Conversions

Conversions Part 1

Format	Color
Hex	D8A89D
RGB	216, 168, 157
RGB Percent	85%, 66%, 62%
CMY	0.1529, 0.3412, 0.3843
CMYK	0.00, 0.22, 0.27, 0.15
HSL	11°, 43%, 73%
HSV	11°, 27%, 85%
XYZ	48.4073, 45.0385, 38.0402
YIQ	181.0980, 32.1390, 6.7550

Conversions

Conversions Part 2

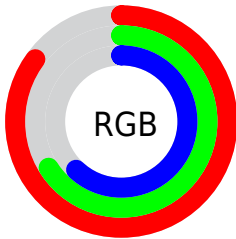
Format	Color
R _Y B	216, 171, 157
Decimal	14198941
CIE Lab	72.92, 16.03, 12.44
CIE LCh	73, 20.295, 37.821
Yxy	45.0385, 0.3682, 0.3425
Android (android.graphics.Color)	4292389021 (0xFFD8A89D)
YUV	181.0980, -11.8803, 30.6091
Hunter-Lab	67.1107, 11.3092, 13.3703

Details

The YUV color **181.0980, -11.8803, 30.6091** is a light color, and the websafe version is hex **CC9999**. A complement of this color would be **191.9020, 11.8803, -30.6091**, and the grayscale version is **181.0000, 0.0000, 0.0000**.

A 20% lighter version of the original color is **231.3140, -9.5218, 20.7726**, and **128.0160, -10.8539, 28.0500** is the 20% darker color. If you saturate the color by 10%, you get **168.0240, -16.2808, 42.0750**, and if you desaturate by 10%, it is **194.1720, -7.4798, 19.1432**.

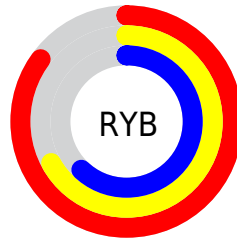
Distribution



Red (85%)

Green (66%)

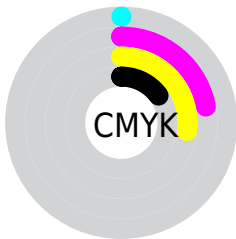
Blue (62%)



Red (85%)

Yellow (67%)

Blue (62%)

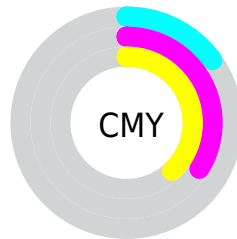


Cyan (0%)

Magenta (22%)

Yellow (27%)

Black (15%)



Cyan (15%)

Magenta (34%)

Yellow (38%)

Brightness & Saturation Gradients

These gradients show how the YUV color 181.0980, -11.8803, 30.6091 changes by changing the brightness by 10 percent. The first figure shows a shift by +10% for each color and the second figure -10%.

Similar to the brightness gradients but the following saturation gradients show a change of the YUV color 181.0980, -11.8803, 30.6091 by changing the saturation by 10% instead.

■ 181.0980,
-11.8803, 30.6091

■ 181.0980,
-11.8803, 30.6091

255.0000, 0.0000,
0.0000

■ 153.9130,
-11.2961, 29.8943

■ 231.3140, -9.5218,
20.7726

■ 128.0160,
-10.8539, 28.0500

■ 251.5290, -5.6838,
3.0441

■ 102.5320,
-10.1223, 26.7204

■ 78.0480, -9.3907,
25.3909

■ 55.1510, -8.9484,
23.5466

■ 32.3680, -8.0694,
21.6023

■ 10.7640, -5.3067,

22.1320

0.0000, 0.0000,
0.0000

181.0980,
-11.8803, 30.6091

181.0980,
-11.8803, 30.6091

168.0240,
-16.2808, 42.0750

194.1720, -7.4798,
19.1432

155.6510,
-20.5339, 52.9261

206.5450, -3.2267,
8.2920

142.5770,
-24.9345, 64.3920

219.6190, 1.1738,
-3.1739

130.2040,
-29.1876, 75.2431

231.9920, 5.4269,
-14.0250

117.1300,
-33.5881, 86.7090

243.3390, 5.7489,
-23.9763

■ 104.6430,
-38.2780, 97.6601

■ 91.6830, -42.2417,
109.0260

■ 88.0640, -43.4156,
112.1999

Harmonies

Analogous

The Analogous color harmony consists of three colors that are next to each other on the color wheel.



182.2750, -3.5866, 30.4538



181.0980, -11.8803, 30.6091



179.6750, -17.0948, 23.0870

Triad

The Triadic color harmony groups three colors that are evenly spaced from another and form a triangle on the color wheel.



181.0980, -11.8803, 30.6091



173.0050, -4.4395, -22.8064



178.6190, 17.9358, -12.8209

Complementary

The Complementary color scheme is a pair of colors which are on the opposite of each other on the color wheel.



181.0980, -11.8803, 30.6091



191.9020, 11.8803, -30.6091

Split Complementary

Split-complementary colors differ from the complementary color scheme. The scheme consists of three colors, the original color and two neighbors of the complement color.



175.0360, 18.7163, -29.8496



181.0980, -11.8803, 30.6091



171.8600, 5.4920, -34.9572

Square

The Square scheme is like the rectangle color scheme, but the four colors are evenly spaced on the color wheel.



181.0980, -11.8803, 30.6091



175.5140, -13.0714, -7.4668



171.8410, 14.3754, -37.5716



181.4750, 13.0768, 5.7224

Rectangle

The Rectangle color scheme consists of four colors that form a rectangle on the color wheel.



181.0980, -11.8803, 30.6091



178.3920, -17.9413, 14.5652



171.8410, 14.3754, -37.5716



177.5150, 18.9731, -18.8687

Sweetspot

The Sweet Spot groups the original color and five complimentary colors.



181.0980, -11.8803, 30.6091



242.7410, -3.8163, 10.7511



180.1130, 12.2693, 31.4729



120.0610, -2.4951, 6.9625



0.0000, 0.0000, 0.0000



128.0000, 0.0000, 0.0000

Same Dimension

The Same Dimension uses a secret algorithm to generate beautiful new colors.



181.0980, -11.8803, 30.6091



205.5080, -17.0124, 43.4045



198.1210, -20.2727, 15.6799



100.4630, -2.2003, 5.7329



69.9130, -34.4671, 88.6533



17.5530, -8.6536, 22.3170

Inverse Universe

The Inverse Universe completely reimagines the original color for something new.



191.9020, 11.8803, -30.6091



220.4920, 17.0124, -43.4045



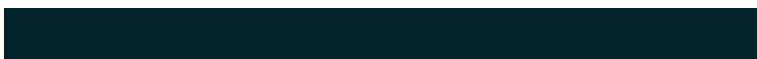
174.8790, 20.2727, -15.6799



102.5370, 2.2003, -5.7329



101.0870, 34.4671, -88.6533



25.4470, 8.6536, -22.3170

Previews

White Background



This preview shows how the YUV color 181.0980, -11.8803, 30.6091 looks on a white background.

Color Contrast Check

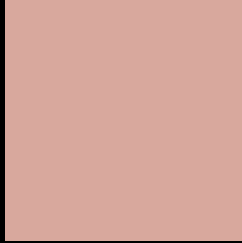
Large Text (above 18pt) WCAG AA × Fail

Any Text WCAG AA × Fail

Large Text (above 18pt) WCAG AAA × Fail

Any Text WCAG AAA × Fail

Black Background



This preview shows how the YUV color 181.0980, -11.8803, 30.6091 looks on a black background.

Color Contrast Check

Large Text (above 18pt) WCAG AA ✓ Pass

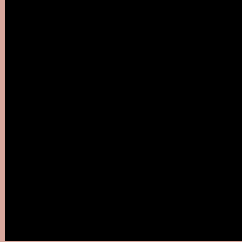
Any Text WCAG AA ✓ Pass

Large Text (above 18pt) WCAG AAA ✓ Pass

Any Text WCAG AAA ✓ Pass

If you want to check with other color combinations, try the [Color Contrast Checker](#).

YUV 181.0980, -11.8803, 30.6091 Background



This preview shows how black text looks on a background with the YUV color 181.0980, -11.8803, 30.6091.



This preview shows how white text looks on a background with the YUV color 181.0980, -11.8803,

Color Blindness Simulation

Color vision deficiency is a very complex topic, and I could not describe the different causes any better than Wikipedia does, so if you want to learn more, you should check out their [article about color blindness](#).

Dichromacy



Original Color

181.0980, -11.8803, 30.6091

Protanopia

179.1550, -8.4574, 6.0031

Deuteranopia

180.6300, -12.1426, 21.3725



Tritanopia

182.3290, -2.1342, 31.2835

Trichromacy



Original Color

181.0980, -11.8803, 30.6091

Protanomaly

179.8680, -9.7949, 15.0248

Deuteranomaly

180.6520, -12.1534, 24.8612

Tritanomaly

181.7050, -5.7706, 30.9537

Monochromacy



Original Color

181.0980, -11.8803, 30.6091

Achromatopsia

181.0000, 0.0000, 0.0000

Achromatomaly

180.9260, -4.4005, 11.4659

CSS Examples

Text

The CSS property to change the color of the text to YUV 181.0980, -11.8803, 30.6091 is called "color". The color property can be set on classes, ids or directly on the HTML element.

This example shows how text in the color `rgb(216, 168, 157)` looks like.

```
.text, #text, p{  
    color:rgb(216, 168, 157)  
}
```

If you want to add a text shadow in that color use the text-shadow property, you can generate a text shadow directly with our [CSS Text Shadow Generator](#).

Here you see how black text with a 4 pixel rgb(216, 168, 157) colored shadow looks like.

```
.shadow{ text-shadow: 4px 4px 2px rgb(216, 168, 157) }
```

Border

The CSS property to change the border of an element to YUV 181.0980, -11.8803, 30.6091 is called "border".

The border property can be set on classes, ids or directly on the HTML element.

This example shows the color as border, it can be applied via the CSS property "border" or "border-color".

```
.border, #border, table{ border:4px solid rgb(216, 168, 157) }
```


If only the border color should be changed use the property `border-color`.

```
.border{ border-color:rgb(216, 168, 157) }
```

If you want to add a box shadow in that color use:

Here you see how a box with a 4 pixel `rgb(216, 168, 157)` colored shadow looks like.

```
.boxshadow{ -moz-box-shadow:4px 4px 4px  
4px rgb(216, 168, 157); -webkit-box-  
shadow:4px 4px 4px 4px rgb(216, 168, 157);  
box-shadow:4px 4px 4px 4px rgb(216, 168,  
157) }
```

Background

The CSS property to change the background color of an element to YUV 181.0980, -11.8803, 30.6091 is called "background". The background property can be set on classes, ids or directly on the HTML element.

```
.background, #background, body{  
background: rgb(216, 168, 157) }
```

If only the background color should be changed can be used:

```
.background{ background-color: rgb(216,  
168, 157) }
```

This example shows the color as background, it is applied via the CSS property "background".

To optimize and compress your CSS code, you can use our [online CSS compressor and optimizer](#) based on csstidy. If you want to create a linear or radial gradient as background or border, check our [CSS Gradient Generator](#).

Hey! You found this booklet interesting? Support Converting Colors with the new Membership Option!

The pro membership hides all ads, plus gives you double the colors in the color bucket, and more awesome pro features!

[Learn more, Memberships starting at \\$2.50/m!](#)

**Follow me
on Twitter!**

@ConvertingColor