

Converting Colors

YUV(181.1950, -12.4211,
17.3690)

Have a look what the booklet for
YUV(181.1950, -12.4211, 17.3690)
contains.

YUV(181.1950, -12.4211, 17.3690)	3
<i>Conversions</i>	4
<i>Details</i>	6
<i>Harmonies</i>	12
<i>Previews</i>	24
<i>Color Blindness Simulation</i>	28
<i>CSS Examples</i>	31

Color

**YUV(181.1950, -12.4211,
17.3690)**

Conversions

Conversions Part 1

Format	Color
Hex	C9B09C
RGB	201, 176, 156
RGB Percent	79%, 69%, 61%
CMY	0.2118, 0.3098, 0.3882
CMYK	0.00, 0.12, 0.22, 0.21
HSL	27°, 29%, 70%
HSV	27°, 22%, 79%
XYZ	45.6135, 45.8685, 37.9019
YIQ	181.1950, 21.3200, -0.9200

Conversions

Conversions Part 2

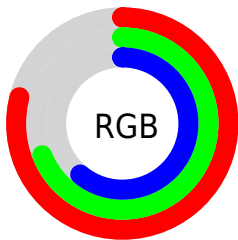
Format	Color
RYB	201, 192, 156
Decimal	13217948
CIELab	73.46, 5.86, 13.55
CIELCh	73, 14.763, 66.626
Yxy	45.8685, 0.3525, 0.3545
Android (android.graphics.Color)	4291408028 (0xFFC9B09C)
YUV	181.1950, -12.4211, 17.3690
Hunter-Lab	67.7263, 1.6983, 14.2277

Details

The YUV color **181.1950, -12.4211, 17.3690** is a light color, and the websafe version is hex **CC9999**. A complement of this color would be **175.8050, 12.4211, -17.3690**, and the grayscale version is **181.0000, 0.0000, 0.0000**.

A 20% lighter version of the original color is **236.4830, -12.5631, 16.2394**, and **128.4120, -11.5421, 15.4247** is the 20% darker color. If you saturate the color by 10%, you get **172.4580, -17.9738, 25.0313**, and if you desaturate by 10%, it is **189.9320, -6.8685, 9.7066**.

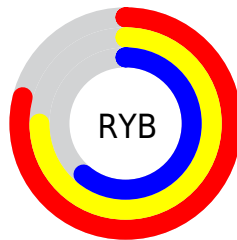
Distribution



Red (79%)

Green (69%)

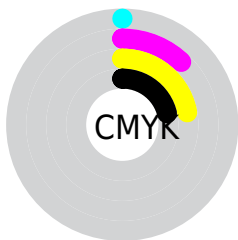
Blue (61%)



Red (79%)

Yellow (75%)

Blue (61%)

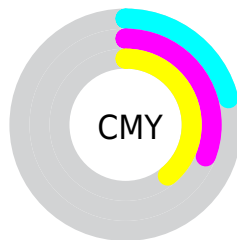


Cyan (0%)

Magenta (12%)

Yellow (22%)

Black (21%)



Cyan (21%)

Magenta (31%)

Yellow (39%)

Brightness & Saturation Gradients

These gradients show how the YUV color 181.1950, -12.4211, 17.3690 changes by changing the brightness by 10 percent. The first figure shows a shift by +10% for each color and the second figure -10%.

Similar to the brightness gradients but the following saturation gradients show a change of the YUV color 181.1950, -12.4211, 17.3690 by changing the saturation by 10% instead.

■ 181.1950,
-12.4211, 17.3690

■ 181.1950,
-12.4211, 17.3690

255.0000, 0.0000,
0.0000

■ 154.0100,
-11.8369, 16.6542

■ 236.4830,
-12.5631, 16.2394

■ 128.4120,
-11.5421, 15.4247

■ 253.1760, -6.9888,
1.5996

■ 103.2270,
-10.9579, 14.7099

■ 79.0420, -10.3737,
13.9952

■ 55.8570, -9.7895,
13.2804

■ 34.2590, -9.4947,
12.0509

■ 11.8830, -5.8583,

12.3806

■ 0.0000, 0.0000,
0.0000

■ 181.1950,
-12.4211, 17.3690

■ 181.1950,
-12.4211, 17.3690

■ 172.4580,
-17.9738, 25.0313

■ 189.9320, -6.8685,
9.7066

■ 163.7210,
-23.5265, 32.6937

■ 198.6690, -1.3158,
2.0443

■ 154.9840,
-29.0791, 40.3560

■ 207.9930, 3.9475,
-6.1329

■ 145.6600,
-34.3424, 48.5332

■ 216.7300, 9.5001,
-13.7952

■ 136.9230,
-39.8950, 56.1955

■ 225.3530, 14.6160,
-21.3576

■ 128.0720,
-45.8845, 63.9579

■ 231.8100, 11.4327,
-27.0204

■ 119.3350,
-51.4372, 71.6202

■ 238.2670, 8.2494,
-32.6832

■ 112.3420,
-55.3846, 77.7531

■ 238.8540, 7.9600,
-33.1980

Harmonies

Analogous

The Analogous color harmony consists of three colors that are next to each other on the color wheel.



182.5530, -8.6536, 22.3170



181.1950, -12.4211, 17.3690



179.4280, -12.5360, 7.5176

Triad

The Triadic color harmony groups three colors that are evenly spaced from another and form a triangle on the color wheel.



181.1950, -12.4211, 17.3690



175.4700, 3.7123, -24.0912



182.2530, 9.7353, 4.1631

Complementary

The Complementary color scheme is a pair of colors which are on the opposite of each other on the color wheel.



181.1950, -12.4211, 17.3690



175.8050, 12.4211, -17.3690

Split Complementary

Split-complementary colors differ from the complementary color scheme. The scheme consists of three colors, the original color and two neighbors of the complement color.



180.6750, 12.9782, -9.3620



181.1950, -12.4211, 17.3690



176.3540, 9.6855, -26.6205

Square

The Square scheme is like the rectangle color scheme, but the four colors are evenly spaced on the color wheel.



181.1950, -12.4211, 17.3690



176.2770, -3.5876, -16.0289



178.0110, 13.3056, -21.0576



182.8370, 4.0244, 15.9290

Rectangle

The Rectangle color scheme consists of four colors that form a rectangle on the color wheel.



181.1950, -12.4211, 17.3690



178.4270, -11.0565, -0.3745



178.0110, 13.3056, -21.0576



181.3880, 11.6407, -0.3403

Sweetspot

The Sweet Spot groups the original color and five complimentary colors.



181.1950, -12.4211, 17.3690



247.0780, -4.9685, 6.9476



172.4190, 4.7234, 25.0655



123.2240, -3.0684, 4.1886



0.0000, 0.0000, 0.0000



128.0000, 0.0000, 0.0000

Same Dimension

The Same Dimension uses a secret algorithm to generate beautiful new colors.



181.1950, -12.4211, 17.3690



224.8280, -19.1422, 26.4608



194.1090, -18.7877, 6.0434



95.0390, -2.4842, 3.4738



91.5880, -45.1529, 62.6283



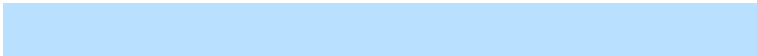
20.1560, -9.9369, 13.8952

Inverse Universe

The Inverse Universe completely reimagines the original color for something new.



175.8050, 12.4211, -17.3690



216.1720, 19.1422, -26.4608



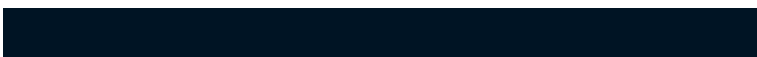
162.8910, 18.7877, -6.0434



93.9610, 2.4842, -3.4738



71.9990, 44.8635, -63.1431



15.8440, 9.9369, -13.8952

Previews

White Background



This preview shows how the YUV color 181.1950, -12.4211, 17.3690 looks on a white background.

Color Contrast Check

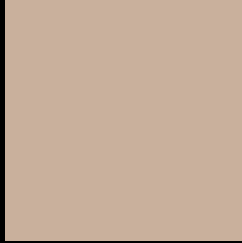
Large Text (above 18pt) WCAG AA × Fail

Any Text WCAG AA × Fail

Large Text (above 18pt) WCAG AAA × Fail

Any Text WCAG AAA × Fail

Black Background



This preview shows how the YUV color 181.1950, -12.4211, 17.3690 looks on a black background.

Color Contrast Check

Large Text (above 18pt) WCAG AA ✓ Pass

Any Text WCAG AA ✓ Pass

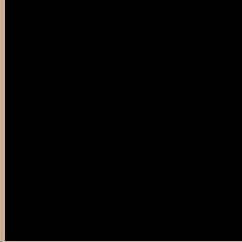
Large Text (above 18pt) WCAG AAA ✓ Pass

Any Text WCAG AAA ✓ Pass

If you want to check with other color combinations, try the [Color Contrast Checker](#).

YUV 181.1950, -12.4211, 17.3690

Background



This preview shows how black text looks on a background with the YUV color 181.1950, -12.4211, 17.3690.



This preview shows how white text looks on a background with the YUV color 181.1950, -12.4211, 17.3690.

Color Blindness Simulation

Color vision deficiency is a very complex topic, and I could not describe the different causes any better than Wikipedia does, so if you want to learn more, you should check out their [article about color blindness](#).

Dichromacy



Original Color

181.1950, -12.4211, 17.3690

Protanopia

180.1830, -10.9362, 7.7325

Deuteranopia

181.8150, -12.7268, 22.0872



Tritanopia

183.3490, 0.8139, 18.9879

Trichromacy



Original Color

181.1950, -12.4211, 17.3690

Protanomaly

180.6780, -11.6733, 10.8064

Deuteranomaly

181.8040, -12.7214, 20.3429

Tritanomaly

182.3830, -4.1328, 18.9581

Monochromacy



Original Color

181.1950, -12.4211, 17.3690

Achromatopsia

181.0000, 0.0000, 0.0000

Achromatomaly

180.8930, -4.3842, 6.2328

CSS Examples

Text

The CSS property to change the color of the text to YUV 181.1950, -12.4211, 17.3690 is called "color". The color property can be set on classes, ids or directly on the HTML element.

This example shows how text in the color `rgb(201, 176, 156)` looks like.

```
.text, #text, p{  
    color:rgb(201, 176, 156)  
}
```

If you want to add a text shadow in that color use the text-shadow property, you can generate a text shadow directly with our [CSS Text Shadow Generator](#).

Here you see how black text with a 4 pixel rgb(201, 176, 156) colored shadow looks like.

```
.shadow{ text-shadow: 4px 4px 2px rgb(201, 176, 156) }
```

Border

The CSS property to change the border of an element to YUV 181.1950, -12.4211, 17.3690 is called "border".

The border property can be set on classes, ids or directly on the HTML element.

This example shows the color as border, it can be applied via the CSS property "border" or "border-color".

```
.border, #border, table{ border:4px solid rgb(201, 176, 156) }
```


If only the border color should be changed use the property border-color.

```
.border{ border-color:rgb(201, 176, 156) }
```

If you want to add a box shadow in that color use:

Here you see how a box with a 4 pixel rgb(201, 176, 156) colored shadow looks like.

```
.boxshadow{ -moz-box-shadow:4px 4px 4px  
4px rgb(201, 176, 156); -webkit-box-  
shadow:4px 4px 4px 4px rgb(201, 176, 156);  
box-shadow:4px 4px 4px 4px rgb(201, 176,  
156) }
```

Background

The CSS property to change the background color of an element to YUV 181.1950, -12.4211, 17.3690 is called "background". The background property can be set on classes, ids or directly on the HTML element.

```
.background, #background, body{  
background: rgb(201, 176, 156) }
```

If only the background color should be changed can be used:

```
.background{ background-color: rgb(201,  
176, 156) }
```

This example shows the color as background, it is applied via the CSS property "background".

To optimize and compress your CSS code, you can use our [online CSS compressor and optimizer](#) based on csstidy. If you want to create a linear or radial gradient as background or border, check our [CSS Gradient Generator](#).

Hey! You found this booklet interesting? Support Converting Colors with the new Membership Option!

The pro membership hides all ads, plus gives you double the colors in the color bucket, and more awesome pro features!

[Learn more, Memberships starting at \\$2.50/m!](#)

**Follow me
on Twitter!**

@ConvertingColor