

# Converting Colors

YUV(181.3050, 0.8356, 12.0105)

Have a look what the booklet for  
YUV(181.3050, 0.8356, 12.0105)  
contains.

<b>YUV(181.3050, 0.8356, 12.0105)</b> .....	3
<b><i>Conversions</i></b> .....	4
<b><i>Details</i></b> .....	6
<b><i>Harmonies</i></b> .....	12
<b><i>Previews</i></b> .....	24
<b><i>Color Blindness Simulation</i></b> .....	28
<b><i>CSS Examples</i></b> .....	31

# Color

**YUV(181.3050, 0.8356,  
12.0105)**

# Conversions

## Conversions Part 1

<b>Format</b>	<b>Color</b>
Hex	C3AEB7
RGB	195, 174, 183
RGB Percent	76%, 68%, 72%
CMY	0.2353, 0.3176, 0.2824
CMYK	0.00, 0.11, 0.06, 0.24
HSL	334°, 15%, 72%
HSV	334°, 11%, 76%
XYZ	46.1890, 45.2931, 51.1078
YIQ	181.3050, 9.6270, 7.2510

# Conversions

## Conversions Part 2

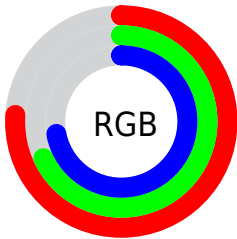
<b>Format</b>	<b>Color</b>
<b>R<sub>YB</sub></b>	195, 174, 183
Decimal	12824247
CIE Lab	73.08, 9.12, -1.84
CIE LCh	73, 9.299, 348.603
Yxy	45.2931, 0.3239, 0.3176
Android (android.graphics.Color)	4291014327 (0xFFC3AEB7)
YUV	181.3050, 0.8356, 12.0105
Hunter-Lab	67.3002, 4.7316, 2.0853

# Details

The YUV color **181.3050, 0.8356, 12.0105** is a light color, and the websafe version is hex **CCCCCC**. A complement of this color would be **187.6950, -0.8356, -12.0105**, and the grayscale version is **181.0000, 0.0000, 0.0000**.

A 20% lighter version of the original color is **237.0170, 0.9776, 13.1401**, and **128.5930, 0.6937, 10.8809** is the 20% darker color. If you saturate the color by 10%, you get **168.8980, 1.5293, 22.8915**, and if you desaturate by 10%, it is **194.2990, -0.1474, 0.6148**.

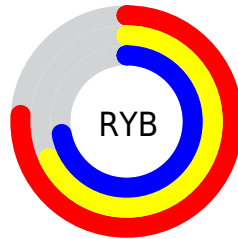
# Distribution



Red (76%)

Green (68%)

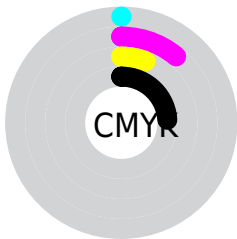
Blue (72%)



Red (76%)

Yellow (68%)

Blue (72%)

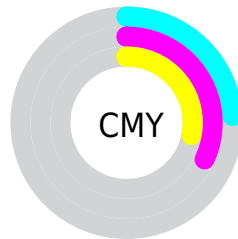


Cyan (0%)

Magenta (11%)

Yellow (6%)

Black (24%)



Cyan (24%)

Magenta (32%)

Yellow (28%)

# Brightness & Saturation Gradients

These gradients show how the YUV color 181.3050, 0.8356, 12.0105 changes by changing the brightness by 10 percent. The first figure shows a shift by +10% for each color and the second figure -10%.

Similar to the brightness gradients but the following saturation gradients show a change of the YUV color 181.3050, 0.8356, 12.0105 by changing the saturation by 10% instead.




 181.3050, 0.8356,  
12.0105

 181.3050, 0.8356,  
12.0105

255.0000, 0.0000,  
0.0000


 154.3050, 0.8356,  
12.0105


 237.0170, 0.9776,  
13.1401

 128.5930, 0.6937,  
10.8809

 103.5930, 0.6937,  
10.8809

 79.2940, 0.8411,  
10.2662

 55.9950, 0.9885,  
9.6514

 34.5820, 0.6991,  
9.1366

 11.5330, 1.7092,

11.8106

■ 0.0000, 0.0000,  
0.0000

■ 181.3050, 0.8356,  
12.0105

■ 181.3050, 0.8356,  
12.0105

■ 168.8980, 1.5293,  
22.8915

■ 194.2990, -0.1474,  
0.6148

■ 155.9040, 2.5123,  
34.2872

■ 206.7060, -0.8411,  
-10.2662

■ 143.4970, 3.2060,  
45.1681

■ 219.7000, -1.8241,  
-21.6619

■ 130.3890, 3.7522,  
56.6638

■ 232.2210, -2.0810,  
-32.6428

■ 117.9820, 4.4459,  
67.5448

■ 235.2360, 1.8557,  
-35.2870

■ 104.9880, 5.4289,  
78.9405

■ 236.4900, 6.6604,  
-36.3867

■ 92.5810, 6.1226,  
89.8215

■ 237.0600, 8.8444,  
-36.8866

■ 79.5870, 7.1056,  
101.2172

■ 67.8810, 7.9467,  
111.4834

# Harmonies

## Analogous

The Analogous color harmony consists of three colors that are next to each other on the color wheel.



180.9990, 4.9305, 5.2629



181.3050, 0.8356, 12.0105



181.1760, -3.5378, 14.7546

# Triad

The Triadic color harmony groups three colors that are evenly spaced from another and form a triangle on the color wheel.



181.3050, 0.8356, 12.0105



178.3610, -7.5730, 2.3144



177.1490, 7.3215, -15.0397

# Complementary

The Complementary color scheme is a pair of colors which are on the opposite of each other on the color wheel.



181.3050, 0.8356, 12.0105



187.6950, -0.8356, -12.0105

# Split Complementary

Split-complementary colors differ from the complementary color scheme. The scheme consists of three colors, the original color and two neighbors of the complement color.



177.1120, 3.3958, -15.8842



181.3050, 0.8356, 12.0105



177.7020, -4.7831, -5.8777

# Square

The Square scheme is like the rectangle color scheme, but the four colors are evenly spaced on the color wheel.



181.3050, 0.8356, 12.0105



179.8780, -8.3209, 8.8770



176.8090, -0.3988, -12.1105



178.5240, 8.6157, -10.1065



# Rectangle

The Rectangle color scheme consists of four colors that form a rectangle on the color wheel.



181.3050, 0.8356, 12.0105



180.8940, -5.8637, 14.1250



176.8090, -0.3988, -12.1105



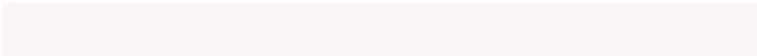
177.2090, 6.3060, -15.9693

# Sweetspot

The Sweet Spot groups the original color and five complimentary colors.



181.3050, 0.8356, 12.0105



247.4350, 0.2785, 4.0035



179.9820, 7.4039, 5.2778



124.1360, 0.4260, 3.3887



0.0000, 0.0000, 0.0000



128.0000, 0.0000, 0.0000



# Same Dimension

The Same Dimension uses a secret algorithm to generate beautiful new colors.



181.3050, 0.8356, 12.0105



231.1640, 1.3981, 18.2732



180.8660, -3.3849, 12.3955



90.4460, 0.2731, 5.7479



56.0050, 6.4065, 92.0806



11.4630, 1.2507, 18.8879



# Inverse Universe

The Inverse Universe completely reimagines the original color for something new.



181.3050, 0.8356, 12.0105



231.1640, 1.3981, 18.2732



188.1340, 3.3849, -12.3955



90.4460, 0.2731, 5.7479



56.0050, 6.4065, 92.0806

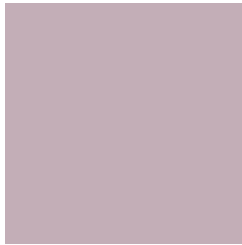


11.4630, 1.2507, 18.8879



# Previews

## White Background



This preview shows how the YUV color 181.3050, 0.8356, 12.0105 looks on a white background.

## Color Contrast Check

Large Text (above 18pt) WCAG AA × Fail

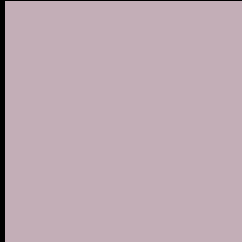
Any Text WCAG AA × Fail

Large Text (above 18pt) WCAG AAA × Fail

Any Text WCAG AAA × Fail



# Black Background



This preview shows how the YUV color 181.3050, 0.8356, 12.0105 looks on a black background.

## Color Contrast Check

Large Text (above 18pt) WCAG AA ✓ Pass

Any Text WCAG AA ✓ Pass

Large Text (above 18pt) WCAG AAA ✓ Pass

Any Text WCAG AAA ✓ Pass

If you want to check with other color combinations, try the [Color Contrast Checker](#).

# YUV 181.3050, 0.8356, 12.0105

## Background



This preview shows how black text looks on a background with the YUV color 181.3050, 0.8356, 12.0105.



This preview shows how white text looks on a background with the YUV color 181.3050, 0.8356,



# Color Blindness Simulation

Color vision deficiency is a very complex topic, and I could not describe the different causes any better than Wikipedia does, so if you want to learn more, you should check out their [article about color blindness](#).

## Dichromacy



### Original Color

181.3050, 0.8356, 12.0105

### Protanopia

180.3960, 2.7628, 0.5297

### Deuteranopia

181.3050, 0.8356, 12.0105



## Tritanopia

181.4730, 2.7248, 12.7402

# Trichromacy



## Original Color

181.3050, 0.8356, 12.0105

## Protanomaly

180.6030, 2.1677, 4.7332

## Deuteranomaly

181.3050, 0.8356, 12.0105

## Tritanomaly

181.3590, 2.2880, 12.8402

# Monochromacy



## Original Color

181.3050, 0.8356, 12.0105

## Achromatopsia

181.0000, 0.0000, 0.0000

## Achromatomaly

180.8480, 0.5679, 4.5183

# CSS Examples

## Text

The CSS property to change the color of the text to YUV 181.3050, 0.8356, 12.0105 is called "color". The color property can be set on classes, ids or directly on the HTML element.

This example shows how text in the color `rgb(195, 174, 183)` looks like.

```
.text, #text, p{  
    color:rgb(195, 174, 183)  
}
```

If you want to add a text shadow in that color use the text-shadow property, you can generate a text shadow directly with our [CSS Text Shadow Generator](#).

Here you see how black text with a 4 pixel rgb(195, 174, 183) colored shadow looks like.

```
.shadow{ text-shadow: 4px 4px 2px rgb(195, 174, 183) }
```

## Border

The CSS property to change the border of an element to YUV 181.3050, 0.8356, 12.0105 is called "border". The border property can be set on classes, ids or directly on the HTML element.

This example shows the color as border, it can be applied via the CSS property "border" or "border-color".

```
.border, #border, table{ border:4px solid rgb(195, 174, 183) }
```



If only the border color should be changed use the property `border-color`.

```
.border{ border-color:rgb(195, 174, 183) }
```

If you want to add a box shadow in that color use:

Here you see how a box with a 4 pixel `rgb(195, 174, 183)` colored shadow looks like.

```
.boxshadow{ -moz-box-shadow:4px 4px 4px  
4px rgb(195, 174, 183); -webkit-box-  
shadow:4px 4px 4px 4px rgb(195, 174, 183);  
box-shadow:4px 4px 4px 4px rgb(195, 174,  
183) }
```

# Background

The CSS property to change the background color of an element to YUV 181.3050, 0.8356, 12.0105 is called "background". The background property can be set on classes, ids or directly on the HTML element.

```
.background, #background, body{  
background: rgb(195, 174, 183) }
```

If only the background color should be changed can be used:

```
.background{ background-color: rgb(195,  
174, 183) }
```

This example shows the color as background, it is applied via the CSS property "background".

To optimize and compress your CSS code, you can use our [online CSS compressor and optimizer](#) based on csstidy. If you want to create a linear or radial gradient as background or border, check our [CSS Gradient Generator](#).

Hey! You found this booklet interesting? Support Converting Colors with the new Membership Option!

The pro membership hides all ads, plus gives you double the colors in the color bucket, and more awesome pro features!

**[Learn more, Memberships starting at \\$2.50/m!](#)**

**Follow me  
on Twitter!**

@ConvertingColor