

Converting Colors

YUV(181.6280, -5.7326,
18.7432)

Have a look what the booklet for
YUV(181.6280, -5.7326, 18.7432)
contains.

YUV(181.6280, -5.7326, 18.7432)	3
<i>Conversions</i>	4
<i>Details</i>	6
<i>Harmonies</i>	12
<i>Previews</i>	24
<i>Color Blindness Simulation</i>	28
<i>CSS Examples</i>	31

Color

**YUV(181.6280, -5.7326,
18.7432)**

Conversions

Conversions Part 1

Format	Color
Hex	CBADAA
RGB	203, 173, 170
RGB Percent	80%, 68%, 67%
CMY	0.2039, 0.3216, 0.3333
CMYK	0.00, 0.15, 0.16, 0.20
HSL	5°, 24%, 73%
HSV	5°, 16%, 80%
XYZ	46.8279, 45.4859, 44.3418
YIQ	181.6280, 18.8430, 5.4270

Conversions

Conversions Part 2

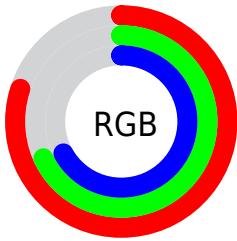
Format	Color
R _{YB}	203, 173, 170
Decimal	13348266
CIE Lab	73.21, 10.38, 5.57
CIE LCh	73, 11.774, 28.213
Yxy	45.4859, 0.3427, 0.3329
Android (android.graphics.Color)	4291538346 (0xFFCBADAA)
YUV	181.6280, -5.7326, 18.7432
Hunter-Lab	67.4433, 5.9122, 8.2290

Details

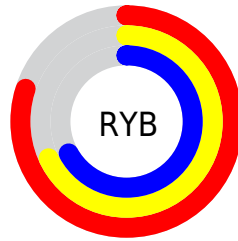
The YUV color **181.6280, -5.7326, 18.7432** is a light color, and the websafe version is hex **CC9999**. A complement of this color would be **191.3720, 5.7326, -18.7432**, and the grayscale version is **182.0000, 0.0000, 0.0000**.

A 20% lighter version of the original color is **235.7310, -5.2904, 16.8989**, and **129.0300, -5.4378, 17.5137** is the 20% darker color. If you saturate the color by 10%, you get **168.7820, -9.2595, 30.0092**, and if you desaturate by 10%, it is **194.4740, -2.2057, 7.4773**.

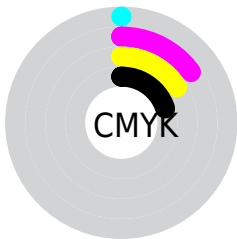
Distribution



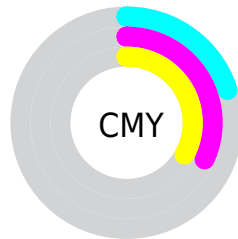
- Red (80%)
- Green (68%)
- Blue (67%)



- Red (80%)
- Yellow (68%)
- Blue (67%)



- Cyan (0%)
- Magenta (15%)
- Yellow (16%)
- Black (20%)



- Cyan (20%)
- Magenta (32%)
- Yellow (33%)

Brightness & Saturation Gradients

These gradients show how the YUV color 181.6280, -5.7326, 18.7432 changes by changing the brightness by 10 percent. The first figure shows a shift by +10% for each color and the second figure -10%.

Similar to the brightness gradients but the following saturation gradients show a change of the YUV color 181.6280, -5.7326, 18.7432 by changing the saturation by 10% instead.

■ 181.6280, -5.7326,
18.7432

■ 181.6280, -5.7326,
18.7432

255.0000, 0.0000,
0.0000

■ 154.4430, -5.1484,
18.0285

■ 235.7310, -5.2904,
16.8989

■ 129.0300, -5.4378,
17.5137

254.8860, -0.4368,
0.1000

■ 103.4320, -5.1430,
16.2841

■ 79.2470, -4.5588,
15.5694

■ 55.9480, -4.4114,
14.9546

■ 34.4640, -3.6798,
13.6251

■ 11.0300, -5.4378,

17.5137

■ 0.0000, 0.0000,
0.0000

■ 181.6280, -5.7326,
18.7432

■ 181.6280, -5.7326,
18.7432

■ 168.7820, -9.2595,
30.0092

■ 194.4740, -2.2057,
7.4773

■ 155.2350,
-12.9339, 41.8899

■ 208.0210, 1.4686,
-4.4034

■ 142.3890,
-16.4608, 53.1558

■ 220.8670, 4.9956,
-15.6694

■ 128.9560,
-19.6983, 64.9366

■ 234.3000, 8.2331,
-27.4501

■ 116.1100,
-23.2252, 76.2025

■ 239.4520, 7.6652,
-31.9684

■ 102.5630,
-26.8996, 88.0832

■ 89.7170, -30.4265,
99.3492

■ 76.2840, -33.6640,
111.1299

■ 71.2630, -35.1327,
115.5333

Harmonies

Analogous

The Analogous color harmony consists of three colors that are next to each other on the color wheel.



182.2840, -0.6330, 16.4139



181.6280, -5.7326, 18.7432



180.6940, -9.2161, 16.0544

Triad

The Triadic color harmony groups three colors that are evenly spaced from another and form a triangle on the color wheel.



181.6280, -5.7326, 18.7432



177.0820, -4.4774, -10.5959



179.3930, 10.6523, -9.9917

Complementary

The Complementary color scheme is a pair of colors which are on the opposite of each other on the color wheel.



181.6280, -5.7326, 18.7432



191.3720, 5.7326, -18.7432

Split Complementary

Split-complementary colors differ from the complementary color scheme. The scheme consists of three colors, the original color and two neighbors of the complement color.



177.5230, 10.0952, -17.9987



181.6280, -5.7326, 18.7432



176.2320, 1.3646, -17.7435

Square

The Square scheme is like the rectangle color scheme, but the four colors are evenly spaced on the color wheel.



181.6280, -5.7326, 18.7432



178.1110, -8.4357, -0.9743



176.4750, 6.1748, -20.5876



180.7040, 9.0199, 0.2596

Rectangle

The Rectangle color scheme consists of four colors that form a rectangle on the color wheel.



181.6280, -5.7326, 18.7432



180.3190, -10.5103, 11.1212



176.4750, 6.1748, -20.5876



178.7840, 10.9525, -12.9656

Sweetspot

The Sweet Spot groups the original color and five complimentary colors.



181.6280, -5.7326, 18.7432



246.4740, -2.2057, 7.4773



183.2870, 8.2395, 17.2883



122.9790, -1.4686, 4.4034



0.0000, 0.0000, 0.0000



128.0000, 0.0000, 0.0000

Same Dimension

The Same Dimension uses a secret algorithm to generate beautiful new colors.



181.6280, -5.7326, 18.7432



222.1840, -8.9647, 28.7796



191.0200, -10.3629, 10.5065



95.5770, -1.7635, 5.6330



58.4390, -28.8104, 94.3310



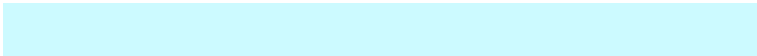
13.1230, -6.4696, 21.8171

Inverse Universe

The Inverse Universe completely reimagines the original color for something new.



191.3720, 5.7326, -18.7432



236.8160, 8.9647, -28.7796



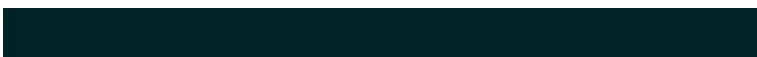
181.9800, 10.3629, -10.5065



98.4230, 1.7635, -5.6330



107.5610, 28.8104, -94.3310



24.8770, 6.4696, -21.8171

Previews

White Background



This preview shows how the YUV color 181.6280, -5.7326, 18.7432 looks on a white background.

Color Contrast Check

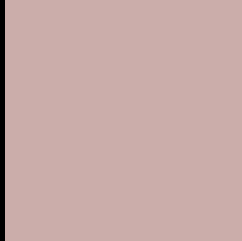
Large Text (above 18pt) WCAG AA × Fail

Any Text WCAG AA × Fail

Large Text (above 18pt) WCAG AAA × Fail

Any Text WCAG AAA × Fail

Black Background



This preview shows how the YUV color 181.6280, -5.7326, 18.7432 looks on a black background.

Color Contrast Check

Large Text (above 18pt) WCAG AA ✓ Pass

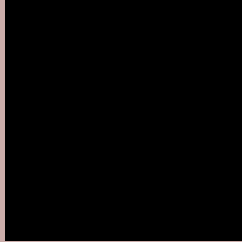
Any Text WCAG AA ✓ Pass

Large Text (above 18pt) WCAG AAA ✓ Pass

Any Text WCAG AAA ✓ Pass

If you want to check with other color combinations, try the [Color Contrast Checker](#).

YUV 181.6280, -5.7326, 18.7432 Background



This preview shows how black text looks on a background with the YUV color 181.6280, -5.7326, 18.7432.



This preview shows how white text looks on a background with the YUV color 181.6280, -5.7326,

Color Blindness Simulation

Color vision deficiency is a very complex topic, and I could not describe the different causes any better than Wikipedia does, so if you want to learn more, you should check out their [article about color blindness](#).

Dichromacy



Original Color

181.6280, -5.7326, 18.7432

Protanopia

180.1100, -3.5052, 4.2885

Deuteranopia

181.6170, -5.7272, 16.9989



Tritanopia

182.6480, 0.6665, 19.6027

Trichromacy



Original Color

181.6280, -5.7326, 18.7432

Protanomaly

180.9150, -4.3951, 9.7215

Deuteranomaly

181.9160, -5.8746, 17.6137

Tritanomaly

182.3660, -1.6594, 18.9730

Monochromacy



Original Color

181.6280, -5.7326, 18.7432

Achromatopsia

182.0000, 0.0000, 0.0000

Achromatomaly

182.1750, -2.0583, 6.8625

CSS Examples

Text

The CSS property to change the color of the text to YUV 181.6280, -5.7326, 18.7432 is called "color". The color property can be set on classes, ids or directly on the HTML element.

This example shows how text in the color `rgb(203, 173, 170)` looks like.

```
.text, #text, p{  
    color:rgb(203, 173, 170)  
}
```

If you want to add a text shadow in that color use the text-shadow property, you can generate a text shadow directly with our [CSS Text Shadow Generator](#).

Here you see how black text with a 4 pixel rgb(203, 173, 170) colored shadow looks like.

```
.shadow{ text-shadow: 4px 4px 2px rgb(203, 173, 170) }
```

Border

The CSS property to change the border of an element to YUV 181.6280, -5.7326, 18.7432 is called "border". The border property can be set on classes, ids or directly on the HTML element.

This example shows the color as border, it can be applied via the CSS property "border" or "border-color".

```
.border, #border, table{ border:4px solid rgb(203, 173, 170) }
```


If only the border color should be changed use the property `border-color`.

```
.border{ border-color:rgb(203, 173, 170) }
```

If you want to add a box shadow in that color use:

Here you see how a box with a 4 pixel `rgb(203, 173, 170)` colored shadow looks like.

```
.boxshadow{ -moz-box-shadow:4px 4px 4px  
4px rgb(203, 173, 170); -webkit-box-  
shadow:4px 4px 4px 4px rgb(203, 173, 170);  
box-shadow:4px 4px 4px 4px rgb(203, 173,  
170) }
```

Background

The CSS property to change the background color of an element to YUV 181.6280, -5.7326, 18.7432 is called "background". The background property can be set on classes, ids or directly on the HTML element.

```
.background, #background, body{  
background: rgb(203, 173, 170) }
```

If only the background color should be changed can be used:

```
.background{ background-color: rgb(203,  
173, 170) }
```

This example shows the color as background, it is applied via the CSS property "background".

To optimize and compress your CSS code, you can use our [online CSS compressor and optimizer](#) based on csstidy. If you want to create a linear or radial gradient as background or border, check our [CSS Gradient Generator](#).

Hey! You found this booklet interesting? Support Converting Colors with the new Membership Option!

The pro membership hides all ads, plus gives you double the colors in the color bucket, and more awesome pro features!

[Learn more, Memberships starting at \\$2.50/m!](#)

**Follow me
on Twitter!**

@ConvertingColor