

Converting Colors

YUV(181.7760, -3.3406,
44.9234)

Have a look what the booklet for
YUV(181.7760, -3.3406, 44.9234)
contains.

YUV(181.7760, -3.3406, 44.9234)	3
<i>Conversions</i>	4
<i>Details</i>	6
<i>Harmonies</i>	12
<i>Previews</i>	24
<i>Color Blindness Simulation</i>	28
<i>CSS Examples</i>	31

Color

**YUV(181.7760, -3.3406,
44.9234)**

Conversions

Conversions Part 1

Format	Color
Hex	E99DAF
RGB	233, 157, 175
RGB Percent	91%, 62%, 69%
CMY	0.0863, 0.3843, 0.3137
CMYK	0.00, 0.33, 0.25, 0.09
HSL	346°, 63%, 76%
HSV	346°, 33%, 91%
XYZ	53.3991, 44.5327, 46.3387
YIQ	181.7760, 39.5180, 21.7100

Conversions

Conversions Part 2

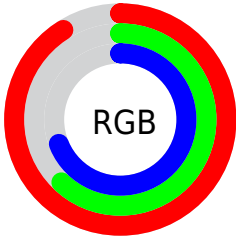
Format	Color
RYB	233, 157, 175
Decimal	15310255
CIELab	72.58, 30.75, 2.29
CIElCh	73, 30.835, 4.262
Yxy	44.5327, 0.3701, 0.3087
Android (android.graphics.Color)	4293500335 (0xFFE99DAF)
YUV	181.7760, -3.3406, 44.9234
Hunter-Lab	66.7328, 26.0518, 5.5426

Details

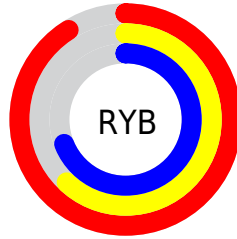
The YUV color **181.7760, -3.3406, 44.9234** is a light color, and the websafe version is hex **CC9999**. A complement of this color would be **208.2240, 3.3406, -44.9234**, and the grayscale version is **182.0000, 0.0000, 0.0000**.

A 20% lighter version of the original color is **226.9090, 1.5239, 24.6358**, and **128.2810, -2.6035, 41.8496** is the 20% darker color. If you saturate the color by 10%, you get **166.2230, -4.5469, 58.5634**, and if you desaturate by 10%, it is **197.3290, -2.1342, 31.2835**.

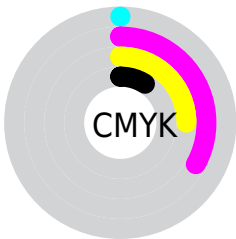
Distribution



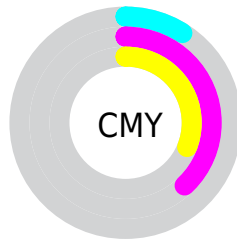
- Red (91%)
- Green (62%)
- Blue (69%)



- Red (91%)
- Yellow (62%)
- Blue (69%)



- Cyan (0%)
- Magenta (33%)
- Yellow (25%)
- Black (9%)



- Cyan (9%)
- Magenta (38%)
- Yellow (31%)

Brightness & Saturation Gradients

These gradients show how the YUV color 181.7760, -3.3406, 44.9234 changes by changing the brightness by 10 percent. The first figure shows a shift by +10% for each color and the second figure -10%.

Similar to the brightness gradients but the following saturation gradients show a change of the YUV color 181.7760, -3.3406, 44.9234 by changing the saturation by 10% instead.

181.7760, -3.3406,
44.9234

181.7760, -3.3406,
44.9234

255.0000, 0.0000,
0.0000

154.1780, -3.0458,
43.6939

226.9090, 1.5239,
24.6358

128.2810, -2.6035,
41.8496

246.7820, 4.0515,
7.2072

102.3840, -2.1613,
40.0052

76.9000, -1.4297,
38.6757

53.1170, -0.5507,
36.7314

27.6870, 1.6333,
36.2315

14.6230, -4.7441,

28.3946

■ 0.0000, 0.0000,
0.0000

■ 181.7760, -3.3406,
44.9234

■ 181.7760, -3.3406,
44.9234

■ 166.2230, -4.5469,
58.5634

■ 197.3290, -2.1342,
31.2835

■ 150.0830, -5.4639,
72.7182

■ 213.4690, -1.2172,
17.1287

■ 134.6440, -6.2335,
86.2582

■ 228.9080, -0.4476,
3.5887

■ 119.0910, -7.4399,
99.8982

■ 244.4610, 0.7587,
-10.0513

■ 102.9510, -8.3568,
114.0530

■ 248.4220, 3.2430,
-13.5251

■ 87.3980, -9.5632,
127.6930

■ 75.9370, -10.3219,
137.7443

Harmonies

Analogous

The Analogous color harmony consists of three colors that are next to each other on the color wheel.



182.8310, 9.9433, 30.8432



181.7760, -3.3406, 44.9234



180.4590, -16.0023, 46.0785

Triad

The Triadic color harmony groups three colors that are evenly spaced from another and form a triangle on the color wheel.



181.7760, -3.3406, 44.9234



172.8530, -20.6335, -8.6411



168.6400, 29.2645, -53.1813

Complementary

The Complementary color scheme is a pair of colors which are on the opposite of each other on the color wheel.



181.7760, -3.3406, 44.9234



208.2240, 3.3406, -44.9234

Split Complementary

Split-complementary colors differ from the complementary color scheme. The scheme consists of three colors, the original color and two neighbors of the complement color.



162.5430, 22.9033, -66.2512



181.7760, -3.3406, 44.9234



168.7280, -7.7539, -33.0875

Square

The Square scheme is like the rectangle color scheme, but the four colors are evenly spaced on the color wheel.



181.7760, -3.3406, 44.9234



176.4000, -26.8192, 15.4352



164.7110, 8.0305, -55.8745



175.7020, 28.7409, -25.1717

Rectangle

The Rectangle color scheme consists of four colors that form a rectangle on the color wheel.



181.7760, -3.3406, 44.9234



179.2920, -22.8220, 40.0859



164.7110, 8.0305, -55.8745



166.2540, 27.9758, -59.8588

Sweetspot

The Sweet Spot groups the original color and five complimentary colors.



181.7760, -3.3406, 44.9234



238.1590, -1.0644, 14.7696



182.7070, 24.7944, 27.4440



117.2400, -0.6113, 9.4365



0.0000, 0.0000, 0.0000



128.0000, 0.0000, 0.0000

Same Dimension

The Same Dimension uses a secret algorithm to generate beautiful new colors.



181.7760, -3.3406, 44.9234



188.2230, -4.5469, 58.5634



190.8770, -16.7014, 36.9419



109.5170, -0.7479, 6.5626



59.0210, -7.8984, 106.9756



17.6280, -2.2816, 31.8982

Inverse Universe

The Inverse Universe completely reimagines the original color for something new.



181.7760, -3.3406, 44.9234



188.2230, -4.5469, 58.5634



199.1230, 16.7014, -36.9419



109.5170, -0.7479, 6.5626



59.0210, -7.8984, 106.9756



17.6280, -2.2816, 31.8982

Previews

White Background



This preview shows how the YUV color 181.7760, -3.3406, 44.9234 looks on a white background.

Color Contrast Check

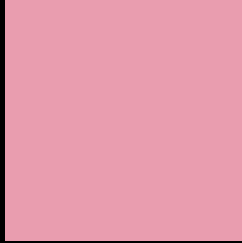
Large Text (above 18pt) WCAG AA × Fail

Any Text WCAG AA × Fail

Large Text (above 18pt) WCAG AAA × Fail

Any Text WCAG AAA × Fail

Black Background



This preview shows how the YUV color 181.7760, -3.3406, 44.9234 looks on a black background.

Color Contrast Check

Large Text (above 18pt) WCAG AA ✓ Pass

Any Text WCAG AA ✓ Pass

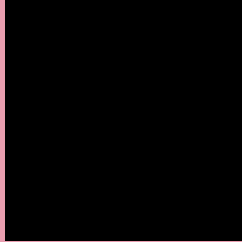
Large Text (above 18pt) WCAG AAA ✓ Pass

Any Text WCAG AAA ✓ Pass

If you want to check with other color combinations, try the [Color Contrast Checker](#).

YUV 181.7760, -3.3406, 44.9234

Background



This preview shows how black text looks on a background with the YUV color 181.7760, -3.3406, 44.9234.



This preview shows how white text looks on a background with the YUV color 181.7760, -3.3406,

Color Blindness Simulation

Color vision deficiency is a very complex topic, and I could not describe the different causes any better than Wikipedia does, so if you want to learn more, you should check out their [article about color blindness](#).

Dichromacy



Original Color

181.7760, -3.3406, 44.9234

Protanopia

178.7380, 4.0732, 0.2298

Deuteranopia

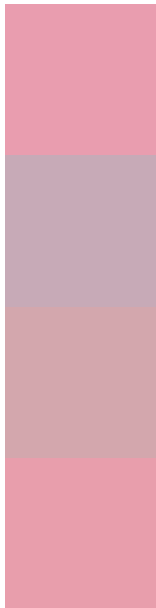
179.7740, -3.8326, 15.9842



Tritanopia

181.4940, -5.6665, 44.2938

Trichromacy



Original Color

181.7760, -3.3406, 44.9234

Protanomaly

180.1530, 1.4036, 16.5288

Deuteranomaly

180.8400, -3.8651, 26.4503

Tritanomaly

181.7220, -4.7929, 44.0938

Monochromacy



Original Color

181.7760, -3.3406, 44.9234

Achromatopsia

182.0000, 0.0000, 0.0000

Achromatomaly

182.0560, -1.5066, 16.6139

CSS Examples

Text

The CSS property to change the color of the text to YUV 181.7760, -3.3406, 44.9234 is called "color". The color property can be set on classes, ids or directly on the HTML element.

This example shows how text in the color `rgb(233, 157, 175)` looks like.

```
.text, #text, p{  
    color:rgb(233, 157, 175)  
}
```

If you want to add a text shadow in that color use the text-shadow property, you can generate a text shadow directly with our [CSS Text Shadow Generator](#).

Here you see how black text with a 4 pixel rgb(233, 157, 175) colored shadow looks like.

```
.shadow{ text-shadow: 4px 4px 2px rgb(233, 157, 175) }
```

Border

The CSS property to change the border of an element to YUV 181.7760, -3.3406, 44.9234 is called "border". The border property can be set on classes, ids or directly on the HTML element.

This example shows the color as border, it can be applied via the CSS property "border" or "border-color".

```
.border, #border, table{ border:4px solid rgb(233, 157, 175) }
```


If only the border color should be changed use the property border-color.

```
.border{ border-color:rgb(233, 157, 175) }
```

If you want to add a box shadow in that color use:

Here you see how a box with a 4 pixel rgb(233, 157, 175) colored shadow looks like.

```
.boxshadow{ -moz-box-shadow:4px 4px 4px  
4px rgb(233, 157, 175); -webkit-box-  
shadow:4px 4px 4px 4px rgb(233, 157, 175);  
box-shadow:4px 4px 4px 4px rgb(233, 157,  
175) }
```

Background

The CSS property to change the background color of an element to YUV 181.7760, -3.3406, 44.9234 is called "background". The background property can be set on classes, ids or directly on the HTML element.

```
.background, #background, body{  
background: rgb(233, 157, 175) }
```

If only the background color should be changed can be used:

```
.background{ background-color: rgb(233,  
157, 175) }
```

This example shows the color as background, it is applied via the CSS property "background".

To optimize and compress your CSS code, you can use our [online CSS compressor and optimizer](#) based on csstidy. If you want to create a linear or radial gradient as background or border, check our [CSS Gradient Generator](#).

Hey! You found this booklet interesting? Support Converting Colors with the new Membership Option!

The pro membership hides all ads, plus gives you double the colors in the color bucket, and more awesome pro features!

[Learn more, Memberships starting at \\$2.50/m!](#)

**Follow me
on Twitter!**

@ConvertingColor