

Converting Colors

YUV(182.0080, -5.4269,
14.0250)

Have a look what the booklet for
YUV(182.0080, -5.4269, 14.0250)
contains.

YUV(182.0080, -5.4269, 14.0250)	3
<i>Conversions</i>	4
<i>Details</i>	6
<i>Harmonies</i>	12
<i>Previews</i>	24
<i>Color Blindness Simulation</i>	28
<i>CSS Examples</i>	31

Color

**YUV(182.0080, -5.4269,
14.0250)**

Conversions

Conversions Part 1

Format	Color
Hex	C6B0AB
RGB	198, 176, 171
RGB Percent	78%, 69%, 67%
CMY	0.2235, 0.3098, 0.3294
CMYK	0.00, 0.11, 0.14, 0.22
HSL	11°, 19%, 72%
HSV	11°, 14%, 78%
XYZ	46.1647, 45.9967, 44.9732
YIQ	182.0080, 14.7170, 3.1090

Conversions

Conversions Part 2

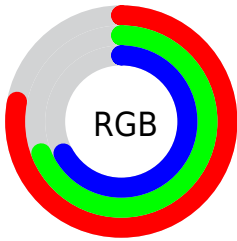
Format	Color
R_{YB}	198, 177, 171
Decimal	13021355
CIE Lab	73.54, 7.07, 5.44
CIE LCh	74, 8.919, 37.580
Yxy	45.9967, 0.3366, 0.3354
Android (android.graphics.Color)	4291211435 (0xFFC6B0AB)
YUV	182.0080, -5.4269, 14.0250
Hunter-Lab	67.8209, 2.8159, 8.1584

Details

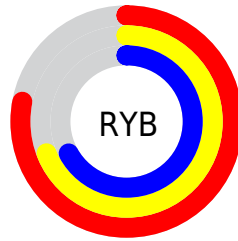
The YUV color **182.0080, -5.4269, 14.0250** is a light color, and the websafe version is hex **CCCCCC**. A complement of this color would be **186.9920, 5.4269, -14.0250**, and the grayscale version is **182.0000, 0.0000, 0.0000**.

A 20% lighter version of the original color is **238.1930, -6.0111, 14.7397**, and **129.4100, -5.1321, 12.7954** is the 20% darker color. If you saturate the color by 10%, you get **170.3360, -9.5326, 24.2613**, and if you desaturate by 10%, it is **193.6800, -1.3212, 3.7886**.

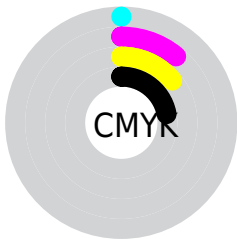
Distribution



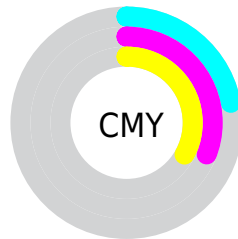
- Red (78%)
- Green (69%)
- Blue (67%)



- Red (78%)
- Yellow (69%)
- Blue (67%)



- Cyan (0%)
- Magenta (11%)
- Yellow (14%)
- Black (22%)



- Cyan (22%)
- Magenta (31%)
- Yellow (33%)

Brightness & Saturation Gradients

These gradients show how the YUV color 182.0080, -5.4269, 14.0250 changes by changing the brightness by 10 percent. The first figure shows a shift by +10% for each color and the second figure -10%.

Similar to the brightness gradients but the following saturation gradients show a change of the YUV color 182.0080, -5.4269, 14.0250 by changing the saturation by 10% instead.

■ 182.0080, -5.4269,
14.0250

■ 182.0080, -5.4269,
14.0250

255.0000, 0.0000,
0.0000

■ 155.1220, -4.9901,
13.9250

■ 238.1930, -6.0111,
14.7397

■ 129.4100, -5.1321,
12.7954

■ 104.1110, -4.9847,
12.1807

■ 79.9260, -4.4005,
11.4659

■ 56.6270, -4.2531,
10.8511

■ 35.3280, -4.1057,
10.2363

■ 12.4810, -6.1531,

13.6102

■ 0.0000, 0.0000,
0.0000

■ 182.0080, -5.4269,
14.0250

■ 182.0080, -5.4269,
14.0250

■ 170.3360, -9.5326,
24.2613

■ 193.6800, -1.3212,
3.7886

■ 158.6640,
-13.6384, 34.4977

■ 205.3520, 2.7845,
-6.4477

■ 147.1060,
-17.3073, 44.6340

■ 216.9100, 6.4534,
-16.5841

■ 134.8470,
-21.1236, 55.3852

■ 229.1690, 10.2697,
-27.3352

■ 123.1750,
-25.2293, 65.6215

■ 237.9570, 8.4022,
-35.0423

■ 111.5030,
-29.3350, 75.8579

■ 99.8310, -33.4407,
86.0942

■ 88.2730, -37.1096,
96.2306

■ 80.9210, -39.8941,
102.6783

Harmonies

Analogous

The Analogous color harmony consists of three colors that are next to each other on the color wheel.



182.3330, -1.6432, 13.7400



182.0080, -5.4269, 14.0250



181.1170, -7.4527, 10.4214

Triad

The Triadic color harmony groups three colors that are evenly spaced from another and form a triangle on the color wheel.



182.0080, -5.4269, 14.0250



178.3640, -2.1515, -9.9662



181.0300, 7.8732, -5.2883

Complementary

The Complementary color scheme is a pair of colors which are on the opposite of each other on the color wheel.



182.0080, -5.4269, 14.0250



186.9920, 5.4269, -14.0250

Split Complementary

Split-complementary colors differ from the complementary color scheme. The scheme consists of three colors, the original color and two neighbors of the complement color.



179.2850, 7.7475, -11.6509



182.0080, -5.4269, 14.0250



178.3680, 1.7906, -14.3547

Square

The Square scheme is like the rectangle color scheme, but the four colors are evenly spaced on the color wheel.



182.0080, -5.4269, 14.0250



179.1970, -5.5201, -2.8038



178.3940, 5.7218, -15.2545



181.9170, 5.9569, 2.7038

Rectangle

The Rectangle color scheme consists of four colors that form a rectangle on the color wheel.



182.0080, -5.4269, 14.0250



180.5680, -8.1680, 6.5179



178.3940, 5.7218, -15.2545



180.7200, 8.0260, -7.6474

Sweetspot

The Sweet Spot groups the original color and five complimentary colors.



182.0080, -5.4269, 14.0250



249.1640, -2.0529, 5.1182



181.5810, 5.6296, 14.3995



123.6800, -1.3212, 3.7886



0.0000, 0.0000, 0.0000



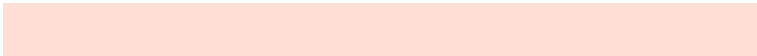
128.0000, 0.0000, 0.0000

Same Dimension

The Same Dimension uses a secret algorithm to generate beautiful new colors.



182.0080, -5.4269, 14.0250



230.9550, -8.3588, 21.0875



189.6390, -9.1890, 7.3326



93.2780, -1.6161, 5.0182



66.3470, -32.7091, 84.7647



14.8730, -7.3324, 18.5284

Inverse Universe

The Inverse Universe completely reimagines the original color for something new.



186.9920, 5.4269, -14.0250



238.0450, 8.3588, -21.0875



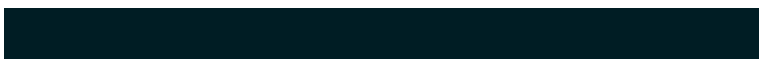
179.3610, 9.1890, -7.3326



95.7220, 1.6161, -5.0182



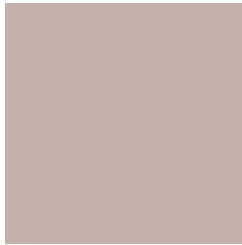
96.6530, 32.7091, -84.7647



21.1270, 7.3324, -18.5284

Previews

White Background



This preview shows how the YUV color 182.0080, -5.4269, 14.0250 looks on a white background.

Color Contrast Check

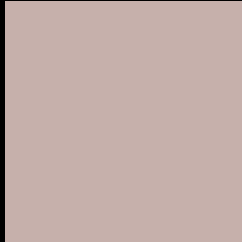
Large Text (above 18pt) WCAG AA × Fail

Any Text WCAG AA × Fail

Large Text (above 18pt) WCAG AAA × Fail

Any Text WCAG AAA × Fail

Black Background



This preview shows how the YUV color 182.0080, -5.4269, 14.0250 looks on a black background.

Color Contrast Check

Large Text (above 18pt) WCAG AA ✓ Pass

Any Text WCAG AA ✓ Pass

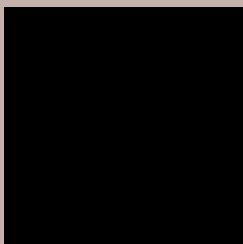
Large Text (above 18pt) WCAG AAA ✓ Pass

Any Text WCAG AAA ✓ Pass

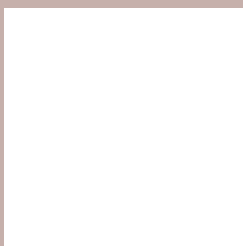
If you want to check with other color combinations, try the [Color Contrast Checker](#).

YUV 182.0080, -5.4269, 14.0250

Background



This preview shows how black text looks on a background with the YUV color 182.0080, -5.4269, 14.0250.



This preview shows how white text looks on a background with the YUV color 182.0080, -5.4269,

Color Blindness Simulation

Color vision deficiency is a very complex topic, and I could not describe the different causes any better than Wikipedia does, so if you want to learn more, you should check out their [article about color blindness](#).

Dichromacy



Original Color

182.0080, -5.4269, 14.0250

Protanopia

180.9960, -3.9420, 4.3885

Deuteranopia

182.6170, -5.7272, 16.9989



Tritanopia

183.2560, 1.8458, 14.6845

Trichromacy



Original Color

182.0080, -5.4269, 14.0250

Protanomaly

181.4910, -4.6791, 7.4624

Deuteranomaly

182.3180, -5.5798, 16.3841

Tritanomaly

182.8600, -0.9170, 14.1548

Monochromacy



Original Color

182.0080, -5.4269, 14.0250

Achromatopsia

182.0000, 0.0000, 0.0000

Achromatomaly

182.1640, -2.0529, 5.1182

CSS Examples

Text

The CSS property to change the color of the text to YUV 182.0080, -5.4269, 14.0250 is called "color". The color property can be set on classes, ids or directly on the HTML element.

This example shows how text in the color `rgb(198, 176, 171)` looks like.

```
.text, #text, p{  
    color:rgb(198, 176, 171)  
}
```

If you want to add a text shadow in that color use the text-shadow property, you can generate a text shadow directly with our [CSS Text Shadow Generator](#).

Here you see how black text with a 4 pixel rgb(198, 176, 171) colored shadow looks like.

```
.shadow{ text-shadow: 4px 4px 2px rgb(198, 176, 171) }
```

Border

The CSS property to change the border of an element to YUV 182.0080, -5.4269, 14.0250 is called "border". The border property can be set on classes, ids or directly on the HTML element.

This example shows the color as border, it can be applied via the CSS property "border" or "border-color".

```
.border, #border, table{ border:4px solid rgb(198, 176, 171) }
```


If only the border color should be changed use the property `border-color`.

```
.border{ border-color:rgb(198, 176, 171) }
```

If you want to add a box shadow in that color use:

Here you see how a box with a 4 pixel `rgb(198, 176, 171)` colored shadow looks like.

```
.boxshadow{ -moz-box-shadow:4px 4px 4px  
4px rgb(198, 176, 171); -webkit-box-  
shadow:4px 4px 4px 4px rgb(198, 176, 171);  
box-shadow:4px 4px 4px 4px rgb(198, 176,  
171) }
```

Background

The CSS property to change the background color of an element to YUV 182.0080, -5.4269, 14.0250 is called "background". The background property can be set on classes, ids or directly on the HTML element.

```
.background, #background, body{  
background: rgb(198, 176, 171) }
```

If only the background color should be changed can be used:

```
.background{ background-color: rgb(198,  
176, 171) }
```

This example shows the color as background, it is applied via the CSS property "background".

To optimize and compress your CSS code, you can use our [online CSS compressor and optimizer](#) based on csstidy. If you want to create a linear or radial gradient as background or border, check our [CSS Gradient Generator](#).

Hey! You found this booklet interesting? Support Converting Colors with the new Membership Option!

The pro membership hides all ads, plus gives you double the colors in the color bucket, and more awesome pro features!

[Learn more, Memberships starting at \\$2.50/m!](#)

**Follow me
on Twitter!**

@ConvertingColor