

# Converting Colors

YUV(182.5070, -2.2220,  
12.7104)

Have a look what the booklet for  
YUV(182.5070, -2.2220, 12.7104)  
contains.

<b>YUV(182.5070, -2.2220, 12.7104)</b> .....	3
<b><i>Conversions</i></b> .....	4
<b><i>Details</i></b> .....	6
<b><i>Harmonies</i></b> .....	12
<b><i>Previews</i></b> .....	24
<b><i>Color Blindness Simulation</i></b> .....	28
<b><i>CSS Examples</i></b> .....	31

# Color

**YUV(182.5070, -2.2220,  
12.7104)**

# Conversions

## Conversions Part 1

<b>Format</b>	<b>Color</b>
Hex	C5B0B2
RGB	197, 176, 178
RGB Percent	77%, 69%, 70%
CMY	0.2275, 0.3098, 0.3020
CMYK	0.00, 0.11, 0.10, 0.23
HSL	354°, 15%, 73%
HSV	354°, 11%, 77%
XYZ	46.5872, 46.1353, 48.5691
YIQ	182.5070, 11.8740, 5.0740

# Conversions

## Conversions Part 2

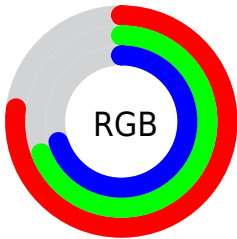
<b>Format</b>	<b>Color</b>
<b>R<sub>YB</sub></b>	197, 176, 178
Decimal	12955826
CIE Lab	73.63, 7.88, 1.73
CIE LCh	74, 8.063, 12.361
Yxy	46.1353, 0.3297, 0.3265
Android (android.graphics.Color)	4291145906 (0xFFC5B0B2)
YUV	182.5070, -2.2220, 12.7104
Hunter-Lab	67.9230, 3.5647, 5.1501

# Details

The YUV color  $182.5070, -2.2220, 12.7104$  is a light color, and the websafe version is hex `CCCCCC`. A complement of this color would be  $190.4930, 2.2220, -12.7104$ , and the grayscale version is  $183.0000, 0.0000, 0.0000$ .

A 20% lighter version of the original color is  $238.8060, -2.3694, 13.3251$ , and  $129.7950, -2.3639, 11.5808$  is the 20% darker color. If you saturate the color by 10%, you get  $168.7150, -4.2965, 24.8059$ , and if you desaturate by 10%, it is  $196.2990, -0.1474, 0.6148$ .

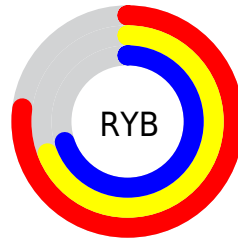
# Distribution



Red (77%)

Green (69%)

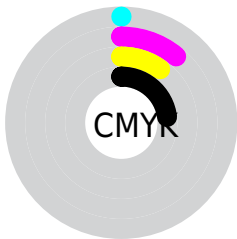
Blue (70%)



Red (77%)

Yellow (69%)

Blue (70%)

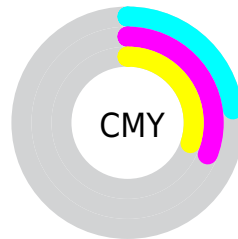


Cyan (0%)

Magenta (11%)

Yellow (10%)

Black (23%)



Cyan (23%)

Magenta (31%)

Yellow (30%)

# Brightness & Saturation Gradients

These gradients show how the YUV color 182.5070, -2.2220, 12.7104 changes by changing the brightness by 10 percent. The first figure shows a shift by +10% for each color and the second figure -10%.

Similar to the brightness gradients but the following saturation gradients show a change of the YUV color 182.5070, -2.2220, 12.7104 by changing the saturation by 10% instead.



■ 182.5070, -2.2220,  
12.7104

■ 182.5070, -2.2220,  
12.7104

255.0000, 0.0000,  
0.0000

■ 155.5070, -2.2220,  
12.7104

■ 238.8060, -2.3694,  
13.3251

■ 129.7950, -2.3639,  
11.5808

■ 104.4960, -2.2165,  
10.9660

■ 80.6100, -1.7797,  
10.8660

■ 57.3110, -1.6323,  
10.2513

■ 35.7130, -1.3375,  
9.0217

■ 13.2080, -2.0745,

12.0956

0.0000, 0.0000,  
0.0000

182.5070, -2.2220,  
12.7104

182.5070, -2.2220,  
12.7104

168.7150, -4.2965,  
24.8059

196.2990, -0.1474,  
0.6148

155.5100, -6.6604,  
36.3867

209.5040, 2.2165,  
-10.9660

141.8320, -8.2982,  
48.3823

223.1820, 3.8543,  
-22.9616

128.0400,  
-10.3727, 60.4779

236.9740, 5.9288,  
-35.0572

114.8350,  
-12.7367, 72.0587

237.6580, 8.5496,  
-35.6571

■ 101.0430,  
-14.8112, 84.1543

■ 87.2510, -16.8857,  
96.2499

■ 73.4590, -18.9603,  
108.3455

■ 61.0690, -20.7400,  
119.2115

# Harmonies

## Analogous

The Analogous color harmony consists of three colors that are next to each other on the color wheel.



182.2230, 1.8621, 9.4514



182.5070, -2.2220, 12.7104



181.9970, -5.4215, 12.2806

# Triad

The Triadic color harmony groups three colors that are evenly spaced from another and form a triangle on the color wheel.



182.5070, -2.2220, 12.7104



179.7130, -4.7885, -4.1333



180.1820, 7.3053, -9.8066

# Complementary

The Complementary color scheme is a pair of colors which are on the opposite of each other on the color wheel.



182.5070, -2.2220, 12.7104



190.4930, 2.2220, -12.7104

# Split Complementary

Split-complementary colors differ from the complementary color scheme. The scheme consists of three colors, the original color and two neighbors of the complement color.



179.4050, 5.7163, -13.5102



182.5070, -2.2220, 12.7104



178.8910, -1.4253, -9.5514

# Square

The Square scheme is like the rectangle color scheme, but the four colors are evenly spaced on the color wheel.



182.5070, -2.2220, 12.7104



180.1870, -6.9942, 3.3440



178.3080, 2.8062, -13.4251



180.8130, 6.9942, -3.3440



# Rectangle

The Rectangle color scheme consists of four colors that form a rectangle on the color wheel.



182.5070, -2.2220, 12.7104



181.3450, -6.5791, 10.2214



178.3080, 2.8062, -13.4251



180.0570, 6.8739, -11.4510

# Sweetspot

The Sweet Spot groups the original color and five complimentary colors.



182.5070, -2.2220, 12.7104



249.5060, -0.7425, 4.8182



184.0750, 6.3720, 9.5812



123.9080, -0.4476, 3.5887



0.0000, 0.0000, 0.0000



128.0000, 0.0000, 0.0000

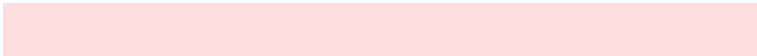


# Same Dimension

The Same Dimension uses a secret algorithm to generate beautiful new colors.



182.5070, -2.2220, 12.7104



232.2090, -3.5540, 19.9877



186.9750, -5.4107, 8.7919



92.6910, -1.3267, 5.5330



50.5610, -17.0386, 98.6090



11.1060, -3.9963, 21.8320



# Inverse Universe

The Inverse Universe completely reimagines the original color for something new.



182.5070, -2.2220, 12.7104



232.2090, -3.5540, 19.9877



186.0250, 5.4107, -8.7919



92.6910, -1.3267, 5.5330



50.5610, -17.0386, 98.6090



11.1060, -3.9963, 21.8320



# Previews

## White Background



This preview shows how the YUV color 182.5070, -2.2220, 12.7104 looks on a white background.

## Color Contrast Check

Large Text (above 18pt) WCAG AA × Fail

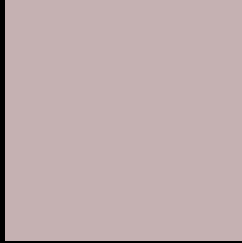
Any Text WCAG AA × Fail

Large Text (above 18pt) WCAG AAA × Fail

Any Text WCAG AAA × Fail



# Black Background



This preview shows how the YUV color 182.5070, -2.2220, 12.7104 looks on a black background.

## Color Contrast Check

Large Text (above 18pt) WCAG AA ✓ Pass

Any Text WCAG AA ✓ Pass

Large Text (above 18pt) WCAG AAA ✓ Pass

Any Text WCAG AAA ✓ Pass

If you want to check with other color combinations, try the [Color Contrast Checker](#).

# YUV 182.5070, -2.2220, 12.7104

## Background



This preview shows how black text looks on a background with the YUV color 182.5070, -2.2220, 12.7104.



This preview shows how white text looks on a background with the YUV color 182.5070, -2.2220,



# Color Blindness Simulation

Color vision deficiency is a very complex topic, and I could not describe the different causes any better than Wikipedia does, so if you want to learn more, you should check out their [article about color blindness](#).

## Dichromacy



### Original Color

182.5070, -2.2220, 12.7104

### Protanopia

181.1960, -0.5896, 2.4591

### Deuteranopia

182.5180, -2.2274, 14.4547



## Tritanopia

182.7720, 2.5774, 13.3550

# Trichromacy



## Original Color

182.5070, -2.2220, 12.7104

## Protanomaly

181.9900, -1.4741, 6.1478

## Deuteranomaly

182.2190, -2.0800, 13.8399

## Tritanomaly

182.9030, 0.5408, 13.2401

# Monochromacy



## Original Color

182.5070, -2.2220, 12.7104

## Achromatopsia

183.0000, 0.0000, 0.0000

## Achromatomaly

182.5060, -0.7425, 4.8182

# CSS Examples

## Text

The CSS property to change the color of the text to YUV 182.5070, -2.2220, 12.7104 is called "color". The color property can be set on classes, ids or directly on the HTML element.

This example shows how text in the color `rgb(197, 176, 178)` looks like.

```
.text, #text, p{  
    color:rgb(197, 176, 178)  
}
```

If you want to add a text shadow in that color use the text-shadow property, you can generate a text shadow directly with our [CSS Text Shadow Generator](#).

Here you see how black text with a 4 pixel rgb(197, 176, 178) colored shadow looks like.

```
.shadow{ text-shadow: 4px 4px 2px rgb(197, 176, 178) }
```

## Border

The CSS property to change the border of an element to YUV 182.5070, -2.2220, 12.7104 is called "border". The border property can be set on classes, ids or directly on the HTML element.

This example shows the color as border, it can be applied via the CSS property "border" or "border-color".

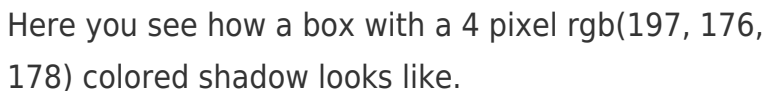
```
.border, #border, table{ border:4px solid rgb(197, 176, 178) }
```



If only the border color should be changed use the property `border-color`.

```
.border{ border-color:rgb(197, 176, 178) }
```

If you want to add a box shadow in that color use:



Here you see how a box with a 4 pixel `rgb(197, 176, 178)` colored shadow looks like.

```
.boxshadow{ -moz-box-shadow:4px 4px 4px 4px rgb(197, 176, 178); -webkit-box-shadow:4px 4px 4px 4px rgb(197, 176, 178); box-shadow:4px 4px 4px 4px rgb(197, 176, 178) }
```

# Background

The CSS property to change the background color of an element to YUV 182.5070, -2.2220, 12.7104 is called "background". The background property can be set on classes, ids or directly on the HTML element.

```
.background, #background, body{  
background: rgb(197, 176, 178) }
```

If only the background color should be changed can be used:

```
.background{ background-color: rgb(197,  
176, 178) }
```

This example shows the color as background, it is applied via the CSS property "background".

To optimize and compress your CSS code, you can use our [online CSS compressor and optimizer](#) based on csstidy. If you want to create a linear or radial gradient as background or border, check our [CSS Gradient Generator](#).

Hey! You found this booklet interesting? Support Converting Colors with the new Membership Option!

The pro membership hides all ads, plus gives you double the colors in the color bucket, and more awesome pro features!

**[Learn more, Memberships starting at \\$2.50/m!](#)**

**Follow me  
on Twitter!**

@ConvertingColor