

Converting Colors

YUV(182.6000, -3.2538,
17.0138)

Have a look what the booklet for
YUV(182.6000, -3.2538, 17.0138)
contains.

YUV(182.6000, -3.2538, 17.0138)	3
<i>Conversions</i>	4
<i>Details</i>	6
<i>Harmonies</i>	12
<i>Previews</i>	24
<i>Color Blindness Simulation</i>	28
<i>CSS Examples</i>	31

Color

**YUV(182.6000, -3.2538,
17.0138)**

Conversions

Conversions Part 1

Format	Color
Hex	CAAEB0
RGB	202, 174, 176
RGB Percent	79%, 68%, 69%
CMY	0.2078, 0.3176, 0.3098
CMYK	0.00, 0.14, 0.13, 0.21
HSL	356°, 21%, 74%
HSV	356°, 14%, 79%
XYZ	47.3296, 45.9632, 47.4515
YIQ	182.6000, 16.0460, 6.5580

Conversions

Conversions Part 2

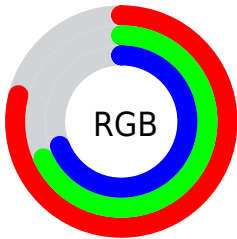
Format	Color
RYB	202, 174, 176
Decimal	13282992
CIELab	73.52, 10.44, 2.71
CIELCh	74, 10.788, 14.576
Yxy	45.9632, 0.3363, 0.3266
Android (android.graphics.Color)	4291473072 (0xFFCAAEB0)
YUV	182.6000, -3.2538, 17.0138
Hunter-Lab	67.7962, 5.9704, 5.9594

Details

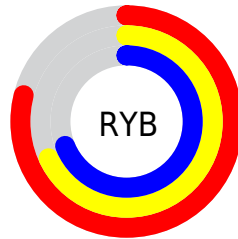
The YUV color **182.6000, -3.2538, 17.0138** is a light color, and the websafe version is hex **CC9999**. A complement of this color would be **193.4000, 3.2538, -17.0138**, and the grayscale version is **183.0000, 0.0000, 0.0000**.

A 20% lighter version of the original color is **237.7030, -2.8116, 15.1695**, and **130.0020, -2.9590, 15.7842** is the 20% darker color. If you saturate the color by 10%, you get **168.6940, -5.7651, 29.2094**, and if you desaturate by 10%, it is **196.5060, -0.7425, 4.8182**.

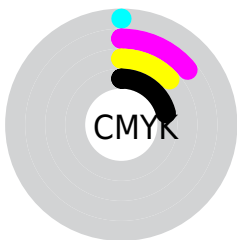
Distribution



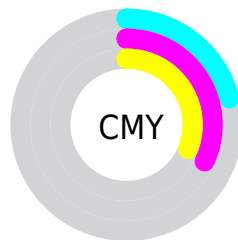
- Red (79%)
- Green (68%)
- Blue (69%)



- Red (79%)
- Yellow (68%)
- Blue (69%)



- Cyan (0%)
- Magenta (14%)
- Yellow (13%)
- Black (21%)



- Cyan (21%)
- Magenta (32%)
- Yellow (31%)

Brightness & Saturation Gradients

These gradients show how the YUV color 182.6000, -3.2538, 17.0138 changes by changing the brightness by 10 percent. The first figure shows a shift by +10% for each color and the second figure -10%.

Similar to the brightness gradients but the following saturation gradients show a change of the YUV color 182.6000, -3.2538, 17.0138 by changing the saturation by 10% instead.

■ 182.6000, -3.2538,
17.0138

■ 182.6000, -3.2538,
17.0138

255.0000, 0.0000,
0.0000

■ 155.3010, -3.1064,
16.3990

■ 237.7030, -2.8116,
15.1695

■ 130.0020, -2.9590,
15.7842

■ 104.7030, -2.8116,
15.1695

■ 80.4040, -2.6642,
14.5547

■ 57.1050, -2.5168,
13.9399

■ 35.5070, -2.2220,
12.7104

■ 12.1160, -2.5222,

15.6843

0.0000, 0.0000,
0.0000

182.6000, -3.2538,
17.0138

182.6000, -3.2538,
17.0138

168.6940, -5.7651,
29.2094

196.5060, -0.7425,
4.8182

154.7880, -8.2765,
41.4049

210.4120, 1.7689,
-7.3773

140.4090,
-10.0616, 54.0153

224.7910, 3.5540,
-19.9877

126.5030,
-12.5730, 66.2109

238.6970, 6.0654,
-32.1833

112.5970,
-15.0843, 78.4064

239.1530, 7.8126,
-32.5832

■ 98.6910, -17.5957,
90.6020

■ 84.8990, -19.6702,
102.6976

■ 70.4060, -21.8922,
115.4079

■ 61.9940, -23.6610,
122.7853

Harmonies

Analogous

The Analogous color harmony consists of three colors that are next to each other on the color wheel.



182.5440, 1.7038, 13.5549



182.6000, -3.2538, 17.0138



181.8620, -7.3270, 16.7840

Triad

The Triadic color harmony groups three colors that are evenly spaced from another and form a triangle on the color wheel.



182.6000, -3.2538, 17.0138



178.3600, -6.0935, -5.5777



179.4420, 9.6421, -12.6656

Complementary

The Complementary color scheme is a pair of colors which are on the opposite of each other on the color wheel.



182.6000, -3.2538, 17.0138



193.4000, 3.2538, -17.0138

Split Complementary

Split-complementary colors differ from the complementary color scheme. The scheme consists of three colors, the original color and two neighbors of the complement color.



177.6540, 8.0586, -18.1136



182.6000, -3.2538, 17.0138



177.5700, -1.2670, -13.6549

Square

The Square scheme is like the rectangle color scheme, but the four colors are evenly spaced on the color wheel.



182.6000, -3.2538, 17.0138



179.6170, -9.1782, 3.8439



177.5030, 3.6960, -18.8581



181.0840, 9.3256, -4.4587

Rectangle

The Rectangle color scheme consists of four colors that form a rectangle on the color wheel.



182.6000, -3.2538, 17.0138



181.3840, -9.0633, 13.6952



177.5030, 3.6960, -18.8581



179.0180, 9.3581, -14.9248

Sweetspot

The Sweet Spot groups the original color and five complimentary colors.



182.6000, -3.2538, 17.0138



248.1040, -1.0373, 6.0478



184.9660, 8.3978, 13.1848



123.2070, -0.5951, 4.2035



0.0000, 0.0000, 0.0000



128.0000, 0.0000, 0.0000

Same Dimension

The Same Dimension uses a secret algorithm to generate beautiful new colors.



182.6000, -3.2538, 17.0138



225.1990, -5.0281, 26.1355



189.4160, -7.6001, 11.0362



95.1040, -1.0373, 6.0478



51.0020, -19.2280, 100.8532



11.7040, -4.2911, 23.0616

Inverse Universe

The Inverse Universe completely reimagines the original color for something new.



182.6000, -3.2538, 17.0138



225.1990, -5.0281, 26.1355



186.5840, 7.6001, -11.0362



95.1040, -1.0373, 6.0478



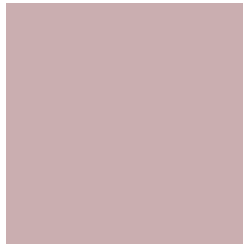
51.0020, -19.2280, 100.8532



11.7040, -4.2911, 23.0616

Previews

White Background



This preview shows how the YUV color 182.6000, -3.2538, 17.0138 looks on a white background.

Color Contrast Check

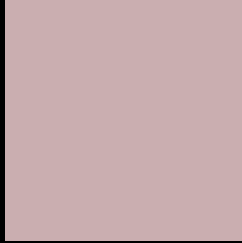
Large Text (above 18pt) WCAG AA × Fail

Any Text WCAG AA × Fail

Large Text (above 18pt) WCAG AAA × Fail

Any Text WCAG AAA × Fail

Black Background



This preview shows how the YUV color 182.6000, -3.2538, 17.0138 looks on a black background.

Color Contrast Check

Large Text (above 18pt) WCAG AA ✓ Pass

Any Text WCAG AA ✓ Pass

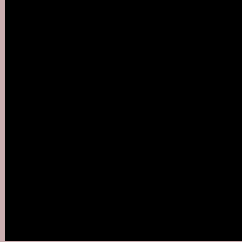
Large Text (above 18pt) WCAG AAA ✓ Pass

Any Text WCAG AAA ✓ Pass

If you want to check with other color combinations, try the [Color Contrast Checker](#).

YUV 182.6000, -3.2538, 17.0138

Background



This preview shows how black text looks on a background with the YUV color 182.6000, -3.2538, 17.0138.



This preview shows how white text looks on a background with the YUV color 182.6000, -3.2538,

Color Blindness Simulation

Color vision deficiency is a very complex topic, and I could not describe the different causes any better than Wikipedia does, so if you want to learn more, you should check out their [article about color blindness](#).

Dichromacy



Original Color

182.6000, -3.2538, 17.0138

Protanopia

181.0820, -1.0264, 2.5591

Deuteranopia

182.5890, -3.2484, 15.2694



Tritanopia

182.8650, 1.5456, 17.6584

Trichromacy



Original Color

182.6000, -3.2538, 17.0138

Protanomaly

181.8870, -1.9163, 7.9921

Deuteranomaly

182.8880, -3.3958, 15.8842

Tritanomaly

182.9960, -0.4910, 17.5435

Monochromacy



Original Color

182.6000, -3.2538, 17.0138

Achromatopsia

183.0000, 0.0000, 0.0000

Achromatomaly

182.9900, -1.4741, 6.1478

CSS Examples

Text

The CSS property to change the color of the text to YUV 182.6000, -3.2538, 17.0138 is called "color". The color property can be set on classes, ids or directly on the HTML element.

This example shows how text in the color `rgb(202, 174, 176)` looks like.

```
.text, #text, p{  
    color:rgb(202, 174, 176)  
}
```

If you want to add a text shadow in that color use the text-shadow property, you can generate a text shadow directly with our [CSS Text Shadow Generator](#).

Here you see how black text with a 4 pixel rgb(202, 174, 176) colored shadow looks like.

```
.shadow{ text-shadow: 4px 4px 2px rgb(202, 174, 176) }
```

Border

The CSS property to change the border of an element to YUV 182.6000, -3.2538, 17.0138 is called "border". The border property can be set on classes, ids or directly on the HTML element.

This example shows the color as border, it can be applied via the CSS property "border" or "border-color".

```
.border, #border, table{ border:4px solid rgb(202, 174, 176) }
```


If only the border color should be changed use the property `border-color`.

```
.border{ border-color:rgb(202, 174, 176) }
```

If you want to add a box shadow in that color use:

Here you see how a box with a 4 pixel `rgb(202, 174, 176)` colored shadow looks like.

```
.boxshadow{ -moz-box-shadow:4px 4px 4px  
4px rgb(202, 174, 176); -webkit-box-  
shadow:4px 4px 4px 4px rgb(202, 174, 176);  
box-shadow:4px 4px 4px 4px rgb(202, 174,  
176) }
```

Background

The CSS property to change the background color of an element to YUV 182.6000, -3.2538, 17.0138 is called "background". The background property can be set on classes, ids or directly on the HTML element.

```
.background, #background, body{  
background: rgb(202, 174, 176) }
```

If only the background color should be changed can be used:

```
.background{ background-color: rgb(202,  
174, 176) }
```

This example shows the color as background, it is applied via the CSS property "background".

To optimize and compress your CSS code, you can use our [online CSS compressor and optimizer](#) based on csstidy. If you want to create a linear or radial gradient as background or border, check our [CSS Gradient Generator](#).

Hey! You found this booklet interesting? Support Converting Colors with the new Membership Option!

The pro membership hides all ads, plus gives you double the colors in the color bucket, and more awesome pro features!

[Learn more, Memberships starting at \\$2.50/m!](#)

**Follow me
on Twitter!**

@ConvertingColor