

Converting Colors

YUV(182.7580, -2.8387,
23.8912)

Have a look what the booklet for
YUV(182.7580, -2.8387, 23.8912)
contains.

| | |
|--|----|
| YUV(182.7580, -2.8387, 23.8912) | 3 |
| <i>Conversions</i> | 4 |
| <i>Details</i> | 6 |
| <i>Harmonies</i> | 12 |
| <i>Previews</i> | 24 |
| <i>Color Blindness Simulation</i> | 28 |
| <i>CSS Examples</i> | 31 |

Color

**YUV(182.7580, -2.8387,
23.8912)**

Conversions

Conversions Part 1

| Format | Color |
|-------------|----------------------------|
| Hex | D2AAB1 |
| RGB | 210, 170, 177 |
| RGB Percent | 82%, 67%, 69% |
| CMY | 0.1765, 0.3333, 0.3059 |
| CMYK | 0.00, 0.19, 0.16, 0.18 |
| HSL | 350°, 31%, 75% |
| HSV | 350°, 19%, 82% |
| XYZ | 48.8889, 45.6254, 47.8248 |
| YIQ | 182.7580, 21.5930, 10.6570 |

Conversions

Conversions Part 2

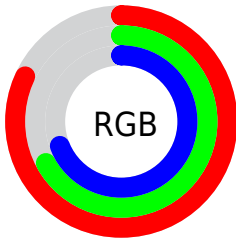
| Format | Color |
|-------------------------------------|-------------------------------|
| R _Y B | 210, 170, 177 |
| Decimal | 13806257 |
| CIE Lab | 73.30, 15.69, 1.94 |
| CIE LCh | 73, 15.813, 7.044 |
| Yxy | 45.6254, 0.3435, 0.3205 |
| Android (android.graphics.Color) | 4291996337 (0xFFD2AAB1) |
| YUV | 182.7580, -2.8387, 23.8912 |
| Hunter-Lab | 67.5466, 10.9882, 5.3037 |

Details

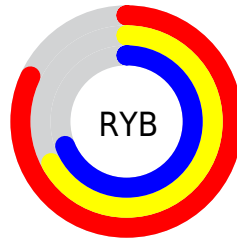
The YUV color $182.7580, -2.8387, 23.8912$ is a light color, and the websafe version is hex $CC9999$. A complement of this color would be $197.2420, 2.8387, -23.8912$, and the grayscale version is $183.0000, 0.0000, 0.0000$.

A 20% lighter version of the original color is $234.8820, -0.9278, 17.6435$, and $129.8610, -2.3965, 22.0469$ is the 20% darker color. If you saturate the color by 10%, you get $168.4930, -4.1870, 36.4016$, and if you desaturate by 10%, it is $197.0230, -1.4903, 11.3808$.

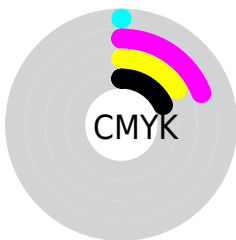
Distribution



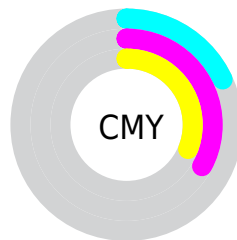
- Red (82%)
- Green (67%)
- Blue (69%)



- Red (82%)
- Yellow (67%)
- Blue (69%)



- Cyan (0%)
- Magenta (19%)
- Yellow (16%)
- Black (18%)





- Cyan (18%)
- Magenta (33%)
- Yellow (31%)

Brightness & Saturation Gradients


These gradients show how the YUV color 182.7580, -2.8387, 23.8912 changes by changing the brightness by 10 percent. The first figure shows a shift by +10% for each color and the second figure -10%.

Similar to the brightness gradients but the following saturation gradients show a change of the YUV color 182.7580, -2.8387, 23.8912 by changing the saturation by 10% instead.

 182.7580, -2.8387,
23.8912

 182.7580, -2.8387,
23.8912

255.0000, 0.0000,
0.0000


 155.4590, -2.6913,
23.2765


 234.8820, -0.9278,
17.6435


 129.8610, -2.3965,
22.0469

254.4130, 0.2894,
0.5148

 104.5620, -2.2491,
21.4321

 79.9640, -1.9543,
20.2026

 56.3660, -1.6594,
18.9730

 34.7680, -1.3646,
17.7435

 11.3770, -1.6649,

20.7174

0.0000, 0.0000,
0.0000

182.7580, -2.8387,
23.8912

182.7580, -2.8387,
23.8912

168.4930, -4.1870,
36.4016

197.0230, -1.4903,
11.3808

154.1140, -5.9722,
49.0120

211.4020, 0.2948,
-1.2296

139.8490, -7.3206,
61.5224

225.6670, 1.6432,
-13.7400

125.5840, -8.6689,
74.0328

239.9320, 2.9915,
-26.2504

111.2050,
-10.4541, 86.6432

241.5450, 6.6333,
-27.6650

■ 96.9400, -11.8024,
99.1536

■ 82.6750, -13.1508,
111.6640

■ 68.2960, -14.9359,
124.2744

■ 67.0080, -14.7939,
125.4040

Harmonies

Analogous

The Analogous color harmony consists of three colors that are next to each other on the color wheel.



182.6630, 4.6031, 16.9585



182.7580, -2.8387, 23.8912



182.3360, -9.5326, 24.2613

Triad

The Triadic color harmony groups three colors that are evenly spaced from another and form a triangle on the color wheel.



182.7580, -2.8387, 23.8912



177.3340, -10.0247, -4.6779



177.5270, 14.0372, -22.3872

Complementary

The Complementary color scheme is a pair of colors which are on the opposite of each other on the color wheel.



182.7580, -2.8387, 23.8912



197.2420, 2.8387, -23.8912

Split Complementary

Split-complementary colors differ from the complementary color scheme. The scheme consists of three colors, the original color and two neighbors of the complement color.



175.5710, 10.5645, -28.5648



182.7580, -2.8387, 23.8912



175.5650, -3.7295, -17.1585

Square

The Square scheme is like the rectangle color scheme, but the four colors are evenly spaced on the color wheel.



182.7580, -2.8387, 23.8912



179.0860, -13.8464, 7.8176



175.1600, 3.8651, -26.4503



179.6040, 13.9992, -10.1767

Rectangle

The Rectangle color scheme consists of four colors that form a rectangle on the color wheel.



182.7580, -2.8387, 23.8912



181.2170, -12.4320, 20.8577



175.1600, 3.8651, -26.4503



176.6900, 13.4638, -25.1611

Sweetspot

The Sweet Spot groups the original color and five complimentary colors.



182.7580, -2.8387, 23.8912



244.7130, -1.3375, 9.0217



184.4270, 12.6075, 16.2885



121.8050, -0.8899, 5.4330



0.0000, 0.0000, 0.0000



128.0000, 0.0000, 0.0000

Same Dimension

The Same Dimension uses a secret algorithm to generate beautiful new colors.



182.7580, -2.8387, 23.8912



214.8950, -3.8922, 35.1721



189.5910, -9.6584, 17.8987



97.5170, -0.7479, 6.5626



53.5380, -12.0972, 100.3832



13.0570, -2.9861, 24.5060

Inverse Universe

The Inverse Universe completely reimagines the original color for something new.



182.7580, -2.8387, 23.8912



214.8950, -3.8922, 35.1721



190.4090, 9.6584, -17.8987



97.5170, -0.7479, 6.5626



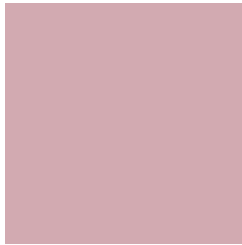
53.5380, -12.0972, 100.3832



13.0570, -2.9861, 24.5060

Previews

White Background



This preview shows how the YUV color 182.7580, -2.8387, 23.8912 looks on a white background.

Color Contrast Check

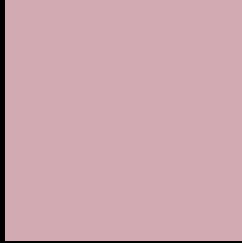
Large Text (above 18pt) WCAG AA × Fail

Any Text WCAG AA × Fail

Large Text (above 18pt) WCAG AAA × Fail

Any Text WCAG AAA × Fail

Black Background



This preview shows how the YUV color 182.7580, -2.8387, 23.8912 looks on a black background.

Color Contrast Check

Large Text (above 18pt) WCAG AA ✓ Pass

Any Text WCAG AA ✓ Pass

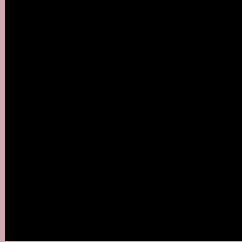
Large Text (above 18pt) WCAG AAA ✓ Pass

Any Text WCAG AAA ✓ Pass

If you want to check with other color combinations, try the [Color Contrast Checker](#).

YUV 182.7580, -2.8387, 23.8912

Background



This preview shows how black text looks on a background with the YUV color 182.7580, -2.8387, 23.8912.



This preview shows how white text looks on a background with the YUV color 182.7580, -2.8387,

Color Blindness Simulation

Color vision deficiency is a very complex topic, and I could not describe the different causes any better than Wikipedia does, so if you want to learn more, you should check out their [article about color blindness](#).

Dichromacy



Original Color

182.7580, -2.8387, 23.8912

Protanopia

180.5380, 0.7208, 2.1592

Deuteranopia

181.7030, -2.8116, 15.1695



Tritanopia

183.0400, -0.5127, 24.5209

Trichromacy



Original Color

182.7580, -2.8387, 23.8912

Protanomaly

181.5390, -0.7587, 10.0513

Deuteranomaly

182.3120, -3.1118, 18.1434

Tritanomaly

182.8120, -1.3863, 24.7209

Monochromacy



Original Color

182.7580, -2.8387, 23.8912

Achromatopsia

183.0000, 0.0000, 0.0000

Achromatomaly

182.8270, -0.9007, 8.9217

CSS Examples

Text

The CSS property to change the color of the text to YUV 182.7580, -2.8387, 23.8912 is called "color". The color property can be set on classes, ids or directly on the HTML element.

This example shows how text in the color `rgb(210, 170, 177)` looks like.

```
.text, #text, p{  
    color:rgb(210, 170, 177)  
}
```

If you want to add a text shadow in that color use the text-shadow property, you can generate a text shadow directly with our [CSS Text Shadow Generator](#).

Here you see how black text with a 4 pixel rgb(210, 170, 177) colored shadow looks like.

```
.shadow{ text-shadow: 4px 4px 2px rgb(210, 170, 177) }
```

Border

The CSS property to change the border of an element to YUV 182.7580, -2.8387, 23.8912 is called "border". The border property can be set on classes, ids or directly on the HTML element.

This example shows the color as border, it can be applied via the CSS property "border" or "border-color".

```
.border, #border, table{ border:4px solid rgb(210, 170, 177) }
```


If only the border color should be changed use the property `border-color`.

```
.border{ border-color:rgb(210, 170, 177) }
```

If you want to add a box shadow in that color use:

Here you see how a box with a 4 pixel `rgb(210, 170, 177)` colored shadow looks like.

```
.boxshadow{ -moz-box-shadow:4px 4px 4px  
4px rgb(210, 170, 177); -webkit-box-  
shadow:4px 4px 4px 4px rgb(210, 170, 177);  
box-shadow:4px 4px 4px 4px rgb(210, 170,  
177) }
```

Background

The CSS property to change the background color of an element to YUV 182.7580, -2.8387, 23.8912 is called "background". The background property can be set on classes, ids or directly on the HTML element.

```
.background, #background, body{  
background: rgb(210, 170, 177) }
```

If only the background color should be changed can be used:

```
.background{ background-color: rgb(210,  
170, 177) }
```

This example shows the color as background, it is applied via the CSS property "background".

To optimize and compress your CSS code, you can use our [online CSS compressor and optimizer](#) based on csstidy. If you want to create a linear or radial gradient as background or border, check our [CSS Gradient Generator](#).

Hey! You found this booklet interesting? Support Converting Colors with the new Membership Option!

The pro membership hides all ads, plus gives you double the colors in the color bucket, and more awesome pro features!

[Learn more, Memberships starting at \\$2.50/m!](#)

**Follow me
on Twitter!**

@ConvertingColor