

Converting Colors

YUV(183.0200, -6.9119,
23.6615)

Have a look what the booklet for
YUV(183.0200, -6.9119, 23.6615)
contains.

YUV(183.0200, -6.9119, 23.6615)	3
<i>Conversions</i>	4
<i>Details</i>	6
<i>Harmonies</i>	12
<i>Previews</i>	24
<i>Color Blindness Simulation</i>	28
<i>CSS Examples</i>	31

Color

**YUV(183.0200, -6.9119,
23.6615)**

Conversions

Conversions Part 1

Format	Color
Hex	D2ACA9
RGB	210, 172, 169
RGB Percent	82%, 67%, 66%
CMY	0.1765, 0.3255, 0.3373
CMYK	0.00, 0.18, 0.20, 0.18
HSL	4°, 31%, 74%
HSV	4°, 20%, 82%
XYZ	48.4923, 46.0713, 43.8729
YIQ	183.0200, 23.6110, 7.1230

Conversions

Conversions Part 2

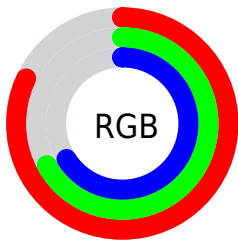
Format	Color
R _Y B	210, 172, 169
Decimal	13806761
CIE Lab	73.59, 13.36, 6.75
CIE LCh	74, 14.965, 26.801
Yxy	46.0713, 0.3503, 0.3328
Android (android.graphics.Color)	4291996841 (0xFFD2ACA9)
YUV	183.0200, -6.9119, 23.6615
Hunter-Lab	67.8758, 8.7425, 9.1897

Details

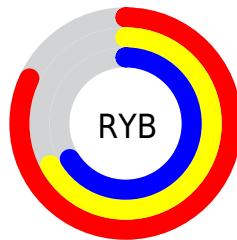
The YUV color $183.0200, -6.9119, 23.6615$ is a light color, and the websafe version is hex $CC9999$. A complement of this color would be $195.9800, 6.9119, -23.6615$, and the grayscale version is $183.0000, 0.0000, 0.0000$.

A 20% lighter version of the original color is $235.0300, -5.4378, 17.5137$, and $130.1230, -6.4696, 21.8171$ is the 20% darker color. If you saturate the color by 10%, you get $169.4730, -10.5862, 35.5422$, and if you desaturate by 10%, it is $196.5670, -3.2375, 11.7807$.

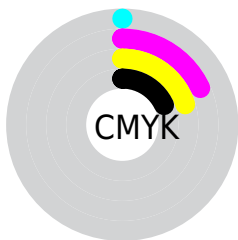
Distribution



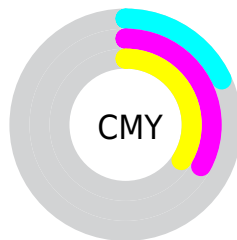
- Red (82%)
- Green (67%)
- Blue (66%)



- Red (82%)
- Yellow (67%)
- Blue (66%)



- Cyan (0%)
- Magenta (18%)
- Yellow (20%)
- Black (18%)



- Cyan (18%)
- Magenta (33%)
- Yellow (34%)

Brightness & Saturation Gradients

These gradients show how the YUV color 183.0200, -6.9119, 23.6615 changes by changing the brightness by 10 percent. The first figure shows a shift by +10% for each color and the second figure -10%.

Similar to the brightness gradients but the following saturation gradients show a change of the YUV color 183.0200, -6.9119, 23.6615 by changing the saturation by 10% instead.

■ 183.0200, -6.9119,
23.6615

■ 183.0200, -6.9119,
23.6615

■ 255.0000, 0.0000,
0.0000

■ 155.8350, -6.3277,
22.9467

■ 235.0300, -5.4378,
17.5137

■ 130.1230, -6.4696,
21.8171

■ 254.7720, -0.8736,
0.2000

■ 104.8240, -6.3222,
21.2024

■ 80.3400, -5.5906,
19.8728

■ 56.8560, -4.8590,
18.5433

■ 34.9590, -4.4168,
16.6990

■ 11.6390, -5.7380,

20.4876

0.0000, 0.0000,
0.0000

183.0200, -6.9119,
23.6615

183.0200, -6.9119,
23.6615

169.4730,
-10.5862, 35.5422

196.5670, -3.2375,
11.7807

155.3390,
-13.9711, 47.9377

210.7010, 0.1474,
-0.6148

141.7920,
-17.6455, 59.8184

224.2480, 3.8217,
-12.4955

127.6580,
-21.0304, 72.2139

238.3820, 7.2067,
-24.8910

114.1110,
-24.7047, 84.0947

241.5450, 6.6333,
-27.6650

■ 99.9770, -28.0897,
96.4902

■ 86.4300, -31.7640,
108.3709

■ 72.2960, -35.1489,
120.7664

■ 71.5950, -35.2963,
121.3812

Harmonies

Analogous

The Analogous color harmony consists of three colors that are next to each other on the color wheel.



184.0180, -0.5019, 21.0322



183.0200, -6.9119, 23.6615



182.0320, -11.8478, 20.1429

Triad

The Triadic color harmony groups three colors that are evenly spaced from another and form a triangle on the color wheel.



183.0200, -6.9119, 23.6615



177.3160, -6.0718, -12.5551



179.5820, 14.0101, -13.6654

Complementary

The Complementary color scheme is a pair of colors which are on the opposite of each other on the color wheel.



183.0200, -6.9119, 23.6615



195.9800, 6.9119, -23.6615

Split Complementary

Split-complementary colors differ from the complementary color scheme. The scheme consists of three colors, the original color and two neighbors of the complement color.



177.1740, 12.7322, -23.8316



183.0200, -6.9119, 23.6615



176.1990, 1.3809, -22.9765

Square

The Square scheme is like the rectangle color scheme, but the four colors are evenly spaced on the color wheel.



183.0200, -6.9119, 23.6615



179.0140, -11.3459, -0.8893



176.3000, 8.2331, -27.4501



182.2740, 11.2039, -0.2403

Rectangle

The Rectangle color scheme consists of four colors that form a rectangle on the color wheel.



183.0200, -6.9119, 23.6615



181.2440, -13.4313, 14.6950



176.3000, 8.2331, -27.4501



179.1470, 13.7315, -17.6689

Sweetspot

The Sweet Spot groups the original color and five complimentary colors.



183.0200, -6.9119, 23.6615



245.0720, -2.5005, 8.7069



185.5910, 10.5546, 21.4067



121.6910, -1.3267, 5.5330



0.0000, 0.0000, 0.0000



128.0000, 0.0000, 0.0000

Same Dimension

The Same Dimension uses a secret algorithm to generate beautiful new colors.



183.0200, -6.9119, 23.6615



216.5760, -10.1440, 33.6978



194.7600, -12.6997, 13.3655



97.8760, -1.9109, 6.2477



57.2760, -28.2371, 97.1049



14.0200, -6.9119, 23.6615

Inverse Universe

The Inverse Universe completely reimagines the original color for something new.



195.9800, 6.9119, -23.6615



235.0110, 9.8546, -34.2126



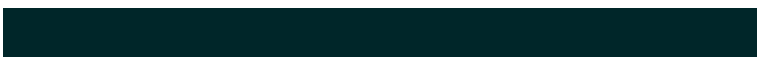
184.2400, 12.6997, -13.3655



101.1240, 1.9109, -6.2477



110.7240, 28.2371, -97.1049



26.9800, 6.9119, -23.6615

Previews

White Background



This preview shows how the YUV color 183.0200, -6.9119, 23.6615 looks on a white background.

Color Contrast Check

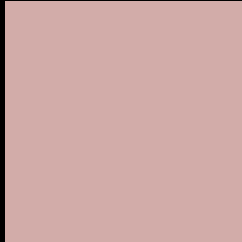
Large Text (above 18pt) WCAG AA × Fail

Any Text WCAG AA × Fail

Large Text (above 18pt) WCAG AAA × Fail

Any Text WCAG AAA × Fail

Black Background



This preview shows how the YUV color 183.0200, -6.9119, 23.6615 looks on a black background.

Color Contrast Check

Large Text (above 18pt) WCAG AA ✓ Pass

Any Text WCAG AA ✓ Pass

Large Text (above 18pt) WCAG AAA ✓ Pass

Any Text WCAG AAA ✓ Pass

If you want to check with other color combinations, try the [Color Contrast Checker](#).

YUV 183.0200, -6.9119, 23.6615

Background



This preview shows how black text looks on a background with the YUV color 183.0200, -6.9119, 23.6615.



This preview shows how white text looks on a background with the YUV color 183.0200, -6.9119,

23.6615.

Color Blindness Simulation

Color vision deficiency is a very complex topic, and I could not describe the different causes any better than Wikipedia does, so if you want to learn more, you should check out their [article about color blindness](#).

Dichromacy



Original Color

183.0200, -6.9119, 23.6615

Protanopia

181.1100, -3.5052, 4.2885

Deuteranopia

182.5740, -7.1850, 17.9136



Tritanopia

184.0400, -0.5127, 24.5209

Trichromacy



Original Color

183.0200, -6.9119, 23.6615

Protanomaly

181.8120, -4.8373, 11.5659

Deuteranomaly

182.8840, -7.3378, 20.2727

Tritanomaly

183.7580, -2.8387, 23.8912

Monochromacy



Original Color

183.0200, -6.9119, 23.6615

Achromatopsia

183.0000, 0.0000, 0.0000

Achromatomaly

183.0720, -2.5005, 8.7069

CSS Examples

Text

The CSS property to change the color of the text to YUV 183.0200, -6.9119, 23.6615 is called "color". The color property can be set on classes, ids or directly on the HTML element.

This example shows how text in the color `rgb(210, 172, 169)` looks like.

```
.text, #text, p{  
    color:rgb(210, 172, 169)  
}
```

If you want to add a text shadow in that color use the text-shadow property, you can generate a text shadow directly with our [CSS Text Shadow Generator](#).

Here you see how black text with a 4 pixel rgb(210, 172, 169) colored shadow looks like.

```
.shadow{ text-shadow: 4px 4px 2px rgb(210, 172, 169) }
```

Border

The CSS property to change the border of an element to YUV 183.0200, -6.9119, 23.6615 is called "border". The border property can be set on classes, ids or directly on the HTML element.

This example shows the color as border, it can be applied via the CSS property "border" or "border-color".

```
.border, #border, table{ border:4px solid rgb(210, 172, 169) }
```


If only the border color should be changed use the property `border-color`.

```
.border{ border-color:rgb(210, 172, 169) }
```

If you want to add a box shadow in that color use:

Here you see how a box with a 4 pixel `rgb(210, 172, 169)` colored shadow looks like.

```
.boxshadow{ -moz-box-shadow:4px 4px 4px  
4px rgb(210, 172, 169); -webkit-box-  
shadow:4px 4px 4px 4px rgb(210, 172, 169);  
box-shadow:4px 4px 4px 4px rgb(210, 172,  
169) }
```

Background

The CSS property to change the background color of an element to YUV 183.0200, -6.9119, 23.6615 is called "background". The background property can be set on classes, ids or directly on the HTML element.

```
.background, #background, body{  
background: rgb(210, 172, 169) }
```

If only the background color should be changed can be used:

```
.background{ background-color: rgb(210,  
172, 169) }
```

This example shows the color as background, it is applied via the CSS property "background".

To optimize and compress your CSS code, you can use our [online CSS compressor and optimizer](#) based on csstidy. If you want to create a linear or radial gradient as background or border, check our [CSS Gradient Generator](#).

Hey! You found this booklet interesting? Support Converting Colors with the new Membership Option!

The pro membership hides all ads, plus gives you double the colors in the color bucket, and more awesome pro features!

[Learn more, Memberships starting at \\$2.50/m!](#)

**Follow me
on Twitter!**

@ConvertingColor