

Converting Colors

YUV(183.2710, -27.7416,
31.3343)

Have a look what the booklet for
YUV(183.2710, -27.7416, 31.3343)
contains.

YUV(183.2710, -27.7416, 31.3343)	3
<i>Conversions</i>	4
<i>Details</i>	6
<i>Harmonies</i>	12
<i>Previews</i>	24
<i>Color Blindness Simulation</i>	28
<i>CSS Examples</i>	31

Color

**YUV(183.2710, -27.7416,
31.3343)**

Conversions

Conversions Part 1

Format	Color
Hex	DBB07F
RGB	219, 176, 127
RGB Percent	86%, 69%, 50%
CMY	0.1412, 0.3098, 0.5020
CMYK	0.00, 0.20, 0.42, 0.14
HSL	32°, 56%, 68%
HSV	32°, 42%, 86%
XYZ	48.5695, 47.6430, 26.7148
YIQ	183.2710, 41.3570, -6.1230

Conversions

Conversions Part 2

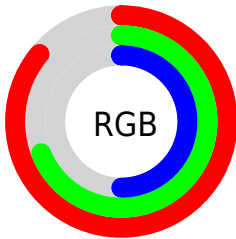
Format	Color
RYB	208, 219, 127
Decimal	14397567
CIELab	74.60, 9.23, 31.00
CIELCh	75, 32.343, 73.424
Yxy	47.6430, 0.3951, 0.3876
Android (android.graphics.Color)	4292587647 (0xFFDDBB07F)
YUV	183.2710, -27.7416, 31.3343
Hunter-Lab	69.0239, 4.8118, 25.3693

Details

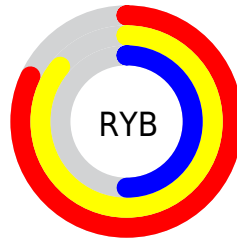
The YUV color **183.2710, -27.7416, 31.3343** is a light color, and the websafe version is hex **CC9966**. A complement of this color would be **162.7290, 27.7416, -31.3343**, and the grayscale version is **184.0000, 0.0000, 0.0000**.

A 20% lighter version of the original color is **232.9490, -26.1039, 19.3387**, and **130.0040, -26.1310, 28.0605** is the 20% darker color. If you saturate the color by 10%, you get **174.8930, -34.4572, 38.6818**, and if you desaturate by 10%, it is **191.6490, -21.0260, 23.9868**.

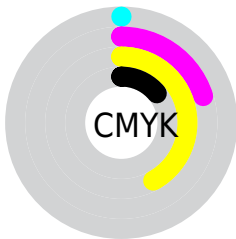
Distribution



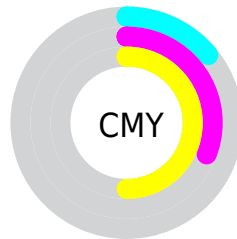
- Red (86%)
- Green (69%)
- Blue (50%)



- Red (82%)
- Yellow (86%)
- Blue (50%)



- Cyan (0%)
- Magenta (20%)
- Yellow (42%)
- Black (14%)



- Cyan (14%)
- Magenta (31%)
- Yellow (50%)

Brightness & Saturation Gradients

These gradients show how the YUV color 183.2710, -27.7416, 31.3343 changes by changing the brightness by 10 percent. The first figure shows a shift by +10% for each color and the second figure -10%.

Similar to the brightness gradients but the following saturation gradients show a change of the YUV color 183.2710, -27.7416, 31.3343 by changing the saturation by 10% instead.

■ 183.2710,
-27.7416, 31.3343

■ 183.2710,
-27.7416, 31.3343

■ 255.0000, 0.0000,
0.0000

■ 155.9010,
-26.5732, 29.9048

■ 232.9490,
-26.1039, 19.3387

■ 130.0040,
-26.1310, 28.0605

■ 249.6420,
-20.5295, 4.6990

■ 104.6340,
-24.9626, 26.6310

■ 252.8340, -8.2992,
1.8996

■ 79.8510, -24.0835,
24.6867

■ 55.9540, -23.6413,
22.8423

■ 35.2400, -17.3733,
19.0835

■ 15.1500, -7.4689,

15.6545

■ 0.0000, 0.0000,
0.0000

■ 183.2710,
-27.7416, 31.3343

■ 183.2710,
-27.7416, 31.3343

■ 174.8930,
-34.4572, 38.6818

■ 191.6490,
-21.0260, 23.9868

■ 166.5150,
-41.1729, 46.0293

■ 200.0270,
-14.3103, 16.6393

■ 157.5500,
-47.5992, 53.8916

■ 208.9920, -7.8841,
8.7770

■ 149.1720,
-54.3148, 61.2392

■ 217.3700, -1.1684,
1.4295

■ 140.9080,
-60.5936, 68.4867

■ 225.6340, 5.1104,
-5.8180

■ 134.1600,
-66.1409, 74.4047

■ 233.6700, 10.5157,
-12.8656

■ 240.1270, 7.3324,
-18.5284

■ 244.2360, 5.3067,
-22.1320

Harmonies

Analogous

The Analogous color harmony consists of three colors that are next to each other on the color wheel.



185.6070, -20.5123, 45.9487



183.2710, -27.7416, 31.3343



180.5410, -27.3817, 9.1725

Triad

The Triadic color harmony groups three colors that are evenly spaced from another and form a triangle on the color wheel.



183.2710, -27.7416, 31.3343



167.5510, 14.0254, -65.3812



187.2510, 19.5963, 14.6889

Complementary

The Complementary color scheme is a pair of colors which are on the opposite of each other on the color wheel.



183.2710, -27.7416, 31.3343



162.7290, 27.7416, -31.3343

Split Complementary

Split-complementary colors differ from the complementary color scheme. The scheme consists of three colors, the original color and two neighbors of the complement color.



183.3440, 28.4244, -16.9647



183.2710, -27.7416, 31.3343



168.2590, 26.9873, -69.5101

Square

The Square scheme is like the rectangle color scheme, but the four colors are evenly spaced on the color wheel.



183.2710, -27.7416, 31.3343



172.5140, -3.2114, -43.4238



175.3570, 31.8690, -48.5481



187.9630, 6.4272, 38.6204

Rectangle

The Rectangle color scheme consists of four colors that form a rectangle on the color wheel.



183.2710, -27.7416, 31.3343



178.3970, -22.3807, -8.2412



175.3570, 31.8690, -48.5481



186.6950, 22.8284, 4.6525

Sweetspot

The Sweet Spot groups the original color and five complimentary colors.



183.2710, -27.7416, 31.3343



242.4330, -10.0735, 11.0213



159.5240, 5.6577, 52.1605



119.7360, -6.2788, 7.2475



0.0000, 0.0000, 0.0000



128.0000, 0.0000, 0.0000

Same Dimension

The Same Dimension uses a secret algorithm to generate beautiful new colors.



183.2710, -27.7416, 31.3343



205.3020, -38.1099, 43.5851



207.9140, -39.8906, 7.9684



105.8110, -3.3578, 3.6738



105.7310, -52.1254, 58.9949



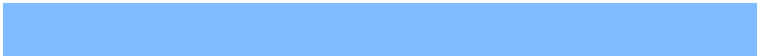
27.8420, -13.7261, 15.9246

Inverse Universe

The Inverse Universe completely reimagines the original color for something new.



162.7290, 27.7416, -31.3343



177.1110, 38.3993, -43.0703



138.0860, 39.8906, -7.9684



103.1890, 3.3578, -3.6738



67.2690, 52.1254, -58.9949



17.5710, 14.0155, -15.4098

Previews

White Background



This preview shows how the YUV color 183.2710, -27.7416, 31.3343 looks on a white background.

Color Contrast Check

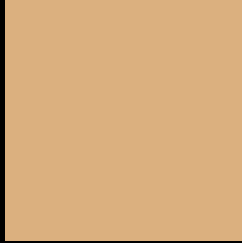
Large Text (above 18pt) WCAG AA × Fail

Any Text WCAG AA × Fail

Large Text (above 18pt) WCAG AAA × Fail

Any Text WCAG AAA × Fail

Black Background



This preview shows how the YUV color 183.2710, -27.7416, 31.3343 looks on a black background.

Color Contrast Check

Large Text (above 18pt) WCAG AA ✓ Pass

Any Text WCAG AA ✓ Pass

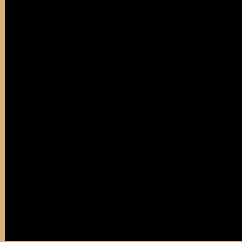
Large Text (above 18pt) WCAG AAA ✓ Pass

Any Text WCAG AAA ✓ Pass

If you want to check with other color combinations, try the [Color Contrast Checker](#).

YUV 183.2710, -27.7416, 31.3343

Background



This preview shows how black text looks on a background with the YUV color 183.2710, -27.7416, 31.3343.



This preview shows how white text looks on a background with the YUV color 183.2710, -27.7416, 31.3343.

Color Blindness Simulation

Color vision deficiency is a very complex topic, and I could not describe the different causes any better than Wikipedia does, so if you want to learn more, you should check out their [article about color blindness](#).

Dichromacy



Original Color

183.2710, -27.7416, 31.3343

Protanopia

182.0300, -25.6508, 14.0057

Deuteranopia

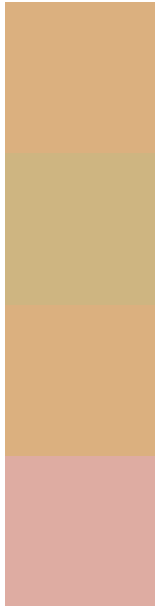
183.2710, -27.7416, 31.3343



Tritanopia

186.9270, -2.4290, 32.5130

Trichromacy



Original Color

183.2710, -27.7416, 31.3343

Protanomaly

182.5470, -26.3987, 20.5683

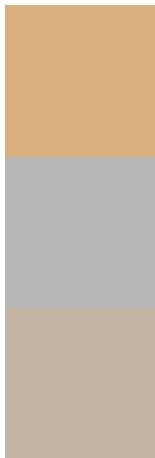
Deuteranomaly

183.2710, -27.7416, 31.3343

Tritanomaly

185.8100, -11.7383, 31.7386

Monochromacy



Original Color

183.2710, -27.7416, 31.3343

Achromatopsia

183.0000, 0.0000, 0.0000

Achromatomaly

182.8460, -9.7841, 11.5361

CSS Examples

Text

The CSS property to change the color of the text to YUV 183.2710, -27.7416, 31.3343 is called "color". The color property can be set on classes, ids or directly on the HTML element.

This example shows how text in the color `rgb(219, 176, 127)` looks like.

```
.text, #text, p{  
    color:rgb(219, 176, 127)  
}
```

If you want to add a text shadow in that color use the text-shadow property, you can generate a text shadow directly with our [CSS Text Shadow Generator](#).

Here you see how black text with a 4 pixel rgb(219, 176, 127) colored shadow looks like.

```
.shadow{ text-shadow: 4px 4px 2px rgb(219, 176, 127) }
```

Border

The CSS property to change the border of an element to YUV 183.2710, -27.7416, 31.3343 is called "border".

The border property can be set on classes, ids or directly on the HTML element.

This example shows the color as border, it can be applied via the CSS property "border" or "border-color".

```
.border, #border, table{ border:4px solid rgb(219, 176, 127) }
```


If only the border color should be changed use the property `border-color`.

```
.border{ border-color:rgb(219, 176, 127) }
```

If you want to add a box shadow in that color use:

Here you see how a box with a 4 pixel `rgb(219, 176, 127)` colored shadow looks like.

```
.boxshadow{ -moz-box-shadow:4px 4px 4px  
4px rgb(219, 176, 127); -webkit-box-  
shadow:4px 4px 4px 4px rgb(219, 176, 127);  
box-shadow:4px 4px 4px 4px rgb(219, 176,  
127) }
```

Background

The CSS property to change the background color of an element to YUV 183.2710, -27.7416, 31.3343 is called "background". The background property can be set on classes, ids or directly on the HTML element.

```
.background, #background, body{  
background: rgb(219, 176, 127) }
```

If only the background color should be changed can be used:

```
.background{ background-color: rgb(219,  
176, 127) }
```

This example shows the color as background, it is applied via the CSS property "background".

To optimize and compress your CSS code, you can use our [online CSS compressor and optimizer](#) based on csstidy. If you want to create a linear or radial gradient as background or border, check our [CSS Gradient Generator](#).

Hey! You found this booklet interesting? Support Converting Colors with the new Membership Option!

The pro membership hides all ads, plus gives you double the colors in the color bucket, and more awesome pro features!

[Learn more, Memberships starting at \\$2.50/m!](#)

**Follow me
on Twitter!**

@ConvertingColor